

SolarInvert Energy Solutions

What is the proportion of mixed energy in the base station room



Overview

Do base stations dominate the energy consumption of the radio access network?

Furthermore, the base stations dominate the energy consumption of the radio access network. Therefore, it is reasonable to focus on the power consumption of the base stations first, while other aspects such as virtualization of compute in the 5G core or the energy consumption of user equipment should be considered at a later stage.

Can a base station Power model be combined?

As the main components are common to most of the models, they can be easily combined to form a new model. Most of the base station power models are based on measurements of LTE (4G) hardware or theoretical assumptions. For the more recent models, based on measurements of 5G hardware, the parameter values are not publicly available.

How do base stations affect mobile cellular network power consumption?

Base stations represent the main contributor to the energy consumption of a mobile cellular network. Since traffic load in mobile networks significantly varies during a working or weekend day, it is important to quantify the influence of these variations on the base station power consumption.

What are the main components of a base station Power model?

The main components are the baseband processing unit, analog frontend, power amplifier, and power supply as well as active cooling. As the main components are common to most of the models, they can be easily combined to form a new model. Most of the base station power models are based on measurements of LTE (4G) hardware or theoretical assumptions.

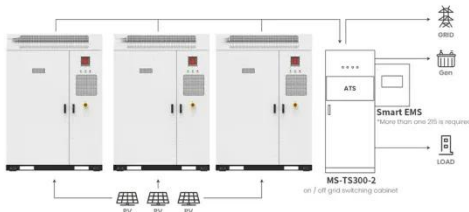
Is there a direct relationship between base station traffic load and power consumption?

The real data in terms of the power consumption and traffic load have been obtained from continuous measurements performed on a fully operated base station site. Measurements show the existence of a direct relationship between base station traffic load and power consumption.

What is the impact of base stations?

The impact of the Base Stations comes from the combination of the power consumption of the equipment itself (up to 1500 Watts for a nowadays macro base station) multiplied by the number of deployed sites in a commercial network (e.g. more than 12000 in UK for a single operator).

What is the proportion of mixed energy in the base station room



Application scenarios of energy storage battery products

Electromagnetic(EM) Radiation From Radio Base ...

The level of RF energy inside buildings where a base station is mounted is typically much lower than the level outside, depending on the construction materials of the building.

[Get Price](#)

5G Base Stations: The Energy Consumption Challenge

Amongst these challenges, the most notable one is the energy consumption of a 5G base station due to the implementation of the massive MIMO technology and the level of network ...

[Get Price](#)



Electricity Generation in Western Australia , Our ...

The process by which these energy sources produce electricity is known as generation. Learn more about electricity generation in Western Australia, how ...

[Get Price](#)

Key Factors Affecting Power Consumption in Telecom ...

Discover the key factors influencing power consumption in telecom base stations. Optimize energy efficiency and reduce operational costs with ...

[Get Price](#)



Three Approaches to Mixed Occupancy Buildings

The IBC offers 3 approaches to mixed occupancy buildings: accessory, nonseparated and separated. Any building with two or more ...

[Get Price](#)

Energy Efficiency Aspects of Base Station Deployment ...

Currently over 80% of the power in mobile telecommunications is consumed in the radio access network, more specifically the base stations. Taking this into account, there are in principle two ...

[Get Price](#)



Key Factors Affecting Power Consumption in Telecom Base Stations

Discover the key factors influencing power consumption in telecom base



stations. Optimize energy efficiency and reduce operational costs with our expert insights.

[Get Price](#)

Energy-Efficient Base Stations

The impact of the Base Stations comes from the combination of the power consumption of the equipment itself (up to 1500 Watts for a nowadays macro base station) multiplied by the ...

[Get Price](#)



US Energy Use Intensity by Property Type

Site EUI is what you may be familiar with from your utility bills. Site EUI contains a mixture of what is called primary energy (i.e., a raw fuel like natural gas) and secondary energy (i.e., a ...

[Get Price](#)

Fire Station Standard Desing_(Mar2021)

All Fire Station facilities shall be protected by an automatic fires suppression system and full detection system. Provide carbon monoxide (CO)

detection in all sleeping and living areas

...

[Get Price](#)



Measurements and Modelling of Base Station Power ...

Measurements show the existence of a direct relationship between base station traffic load and power consumption. According to this relationship, we develop a linear power consumption ...

[Get Price](#)

Power Base Station

If an adjacent base-station transmission (UTRA or LTE) is detected under certain conditions, the maximum allowed Home base-station output power is reduced in proportion to how weak the ...

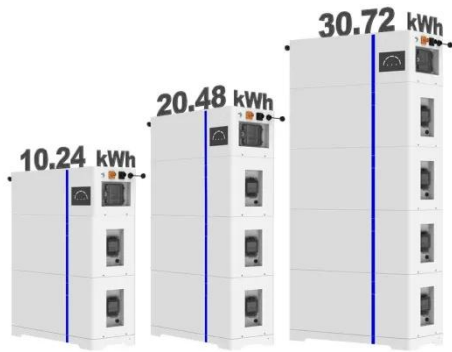
[Get Price](#)



What is Base Station?

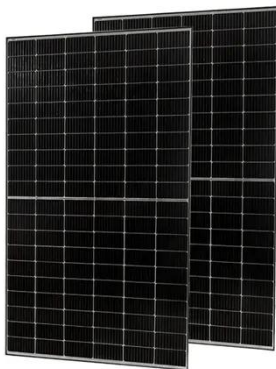
Nowadays, networking has become a crucial part of our daily lives. To implement network services for users, base station plays an essential role to constitute a ...

ESS

[Get Price](#)


5G base stations use a lot more energy than 4G base stations: MTN

A typical 5G base station consumes up to twice or more the power of a 4G base station, writes MTN Consulting Chief Analyst Matt Walker in a new report entitled "Operators ...

[Get Price](#)


Optimization Control Strategy for Base Stations Based on

With the maturity and large-scale deployment of 5G technology, the proportion of energy consumption of base stations in the smart grid is increasing, and there is an urgent need to ...

[Get Price](#)

What is a 5G Base Station?

A 5G base station is a critical component in a mobile network that connects devices, such as smartphones and IoT (Internet of Things) gadgets, ...

[Get Price](#)


What is Combined Hydroelectric Plant?

Base Load: This section is supplied by a single power station, ensuring a stable and uninterrupted power supply. Peak Load: The other ...

[Get Price](#)

Comparison of Power Consumption Models for 5G Cellular Network Base

The main power consuming components of a base station are categorized in the same manner by almost all the discussed models, though the parameters which scale the ...

[Get Price](#)


Department of Energy Philippines

The Department of Energy (DOE) ensures a continuous, adequate, and economic supply of energy to keep pace with the countrys growth and economic

...

[Get Price](#)



Optimal configuration of 5G base station energy storage

Scan for more details creased the demand for backup energy storage batteries. To maximize overall benefits for the investors and operators of base station energy storage, we proposed a ...

[Get Price](#)



Optimal configuration of 5G base station energy storage ...

To maximize overall benefits for the investors and operators of base station energy storage, we proposed a bi-level optimization model for the operation of the energy storage, ...

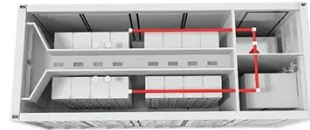
[Get Price](#)

Measurements and Modelling of Base Station Power ...

Since traffic load in mobile networks significantly varies during a working or weekend day, it is important to quantify the influence of these variations on the

base station power consumption.

[Get Price](#)



Energy Mix Fact Sheet: The Changing Sources of ...

The energy mix refers to the combination of energy sources used to meet a country's power, heating, and transportation needs. The electricity mix is a ...

[Get Price](#)

Measurements and Modelling of Base Station Power Consumption under Real

Measurements show the existence of a direct relationship between base station traffic load and power consumption. According to this relationship, we develop a linear power consumption ...

[Get Price](#)



Comparison of Power Consumption Models for 5G Cellular ...

The main power consuming components of a base station are categorized in the same manner by almost all the

discussed models, though the parameters which scale the ...

[Get Price](#)



Victoria

Two utility-scale storage batteries were also added to firm up intermittent generation. Meanwhile, the amount of coal-fired power has decreased ...

[Get Price](#)



✓ IP65/IP55 OUTDOOR CABINET

✓ WATERPROOF OUTDOOR CABINET

✓ 42U/27U

✓ OUTDOOR BATTERY CABINET



Blending of coals to meet power station requirements

This required the cyclone of coals at the B L England Station, New Jersey, the blending boiler was impacting The blend the plant was maintained performance. could comply the sulphur of 1.7% ...

[Get Price](#)

Contact Us

For catalog requests, pricing, or partnerships, please visit:
<https://www.barkingbubbles.co.za>