

SolarInvert Energy Solutions

Base station battery replacement standards



Overview

Do I need to replace my base station's batteries?

If you're not certain which system you have, see the [Which Version of the SimpliSafe® System Do I Have](#) article. You will likely never need to replace your Base Station's batteries as they are rechargeable and meant to last. The Base Station takes four (4) 1.2V, 1300mAh nickel-metal hydride (NiMH) rechargeable batteries.

How many batteries does the base station take?

The Base Station takes four (4) 1.2V, 1300mAh nickel-metal hydride (NiMH) rechargeable batteries. Regular alkaline batteries should never be inserted into the Base Station, as they may damage the device. Once you have acquired the necessary NiMH rechargeable batteries, you can follow the steps below to replace them:.

What are the standards for battery management systems?

At present, IS 17092, the electrical energy storage (EES) standard developed by BIS, and IS 17387:2020 for General Safety and Performance Requirements of Battery Management Systems are the standards dealing with the safe performance of storage systems.

Which battery is best for telecom base station backup power?

Among various battery technologies, Lithium Iron Phosphate (LiFePO₄) batteries stand out as the ideal choice for telecom base station backup power due to their high safety, long lifespan, and excellent thermal stability.

What makes a telecom battery pack compatible with a base station?

Compatibility and Installation Voltage Compatibility: 48V is the standard voltage for telecom base stations, so the battery pack's output voltage must align with base station equipment requirements. **Modular Design:** A modular structure simplifies installation, maintenance, and scalability.

How do you protect a telecom base station?

Backup power systems in telecom base stations often operate for extended periods, making thermal management critical. Key suggestions include:

Cooling System: Install fans or heat sinks inside the battery pack to ensure efficient heat dissipation.

Base station battery replacement standards



How about base station energy storage batteries

One significant aspect of these batteries is their ability to improve grid resilience, which is crucial in areas prone to power interruptions. This ...

[Get Price](#)

What Are the Key Considerations for Telecom Batteries in Base Stations?

These batteries must meet high durability, temperature resilience, and efficiency standards to support 24/7 telecom operations in remote or unstable power environments.

[Get Price](#)



51.2V 150AH, 7.68KWH

Base stations

Any self-directed repairs should only be used for devices that are out of warranty as repair damage may impact your standard warranty. Please consult customer care if you need more ...

[Get Price](#)



Telecom Base Station Backup Power Solution: Design Guide for ...

The battery pack should comply with international safety standards such as UL, CE, and IEC to ensure safe use in telecom base stations. Additionally, it should meet ...

[Get Price](#)



Battery Sizing Considerations IEEE 2020

Introduction to Switchgear What is Switchgear? The combination of electrical disconnect switches, relays, lighting, controls, fuses or circuit breakers used to control, protect and isolate electrical ...

[Get Price](#)

Base Station alert troubleshooting

Errors may arise from an antenna that needs to be recalled or changed, or that may have a default. You may need to replace the Base Station battery. When acquiring a replacement ...

[Get Price](#)



How to Change SimpliSafe Battery? Your Complete ...

Here's a Quick TLDR If you need to change the battery in your SimpliSafe security system, start by disarming the

system. Then, locate the base station ...

[Get Price](#)



WUHAO Li3715T42P3h654251 Battery for ZTE Z700A ...

About this item ?Quality Assurance? All items were thoroughly tested and packed before shipping. Brand new and high quality. ?Pack Well ...

[Get Price](#)



Selection and maintenance of batteries for communication base ...

This paper focuses on the engineering application of battery in the power supply system of communication base stations, and focuses on the selection, installation and maintenance of ...

[Get Price](#)



STANDARD BATTERY MODULES FOR BASE STATION

Small size, high voltage, and big capacity -- better traditional lead-acid battery replacement choice. Standard server size that can be built-in 19-inch

rack -- save room.

[Get Price](#)



SimpliSafe Battery Guide: Battery Life and Replacement Tips

Aside from the SimpliSafe base station and SimpliCam, SimpliSafe components require a periodic replacement of their batteries. In this article, you will learn more about ...

[Get Price](#)

Base station power plug fix / questions.. : r/simplisafe

Re: Base station power plug fix - My adapter would turn off & on also. At first I thought it was the same problem (adapter was bad) but when I twisted & removed the plastic cover from the top ...

[Get Price](#)



What Are the Critical Aspects of Telecom Base Station Backup ...

Telecom base station backup batteries are essential for ensuring uninterrupted communication by providing reliable,

long-lasting power during outages.
Critical aspects ...

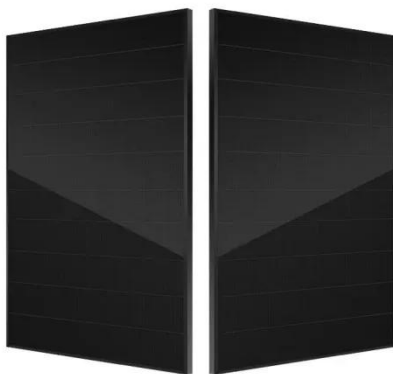
[Get Price](#)



Selection and maintenance of batteries for communication base stations

This paper focuses on the engineering application of battery in the power supply system of communication base stations, and focuses on the selection, installation and maintenance of ...

[Get Price](#)



Telecom Base Station Backup Power Solution: Design ...

The battery pack should comply with international safety standards such as UL, CE, and IEC to ensure safe use in telecom base stations. ...

[Get Price](#)

?Base Station , SimpliSafe Support Home

Base Station Battery Failure If there is a technical issue with the batteries, or if the Base Station is having trouble

keeping them charged, you may receive
a ...

[Get Price](#)



Understanding Backup Battery Requirements for Telecom Base Stations

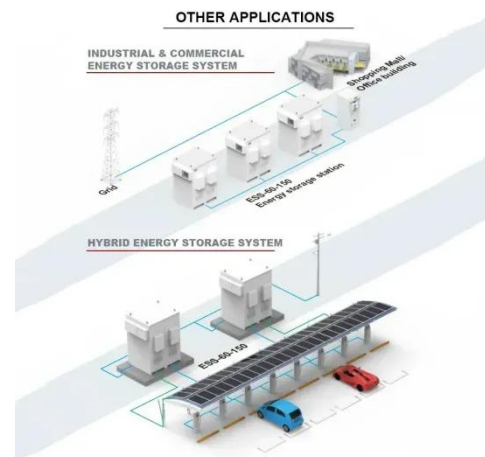
Telecom base stations require reliable backup power to ensure uninterrupted communication services. Selecting the right backup battery is crucial for network stability and ...

[Get Price](#)

What Size Batteries Does SimpliSafe Use? (A ...

Here's a Quick TLDR SimpliSafe uses standard lithium batteries for its security system. The sensors typically use CR123A batteries, while the keypad and ...

[Get Price](#)



Base Station Battery Failure , SimpliSafe Support Home

To resolve this issue: Open the battery compartment on the bottom of the Base Station using a Phillips head screwdriver

Confirm that your Base Station is ...

[Get Price](#)



What Are the Key Considerations for Telecom Batteries in Base ...

These batteries must meet high durability, temperature resilience, and efficiency standards to support 24/7 telecom operations in remote or unstable power environments.

[Get Price](#)

INTEGRATED DESIGN

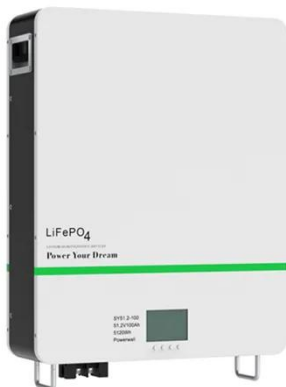
EASY TO TRANSPORT AND INSTALL,
FLEXIBLE DEPLOYMENT



5G Base Station Backup Battery Market Readiness 2025: Skills ...

The Global 5G Base Station Backup Battery Market Report ? is seeing strong growth ? because of better technology ? and more demand in many industries ?. 5G Base Station ...

[Get Price](#)



Understanding Backup Battery Requirements for ...

Telecom base stations require reliable backup power to ensure uninterrupted communication services. Selecting the right backup battery is ...

[Get Price](#)
12.8V 100Ah


Telecom lithium battery 48V 100Ah, BTS backup power system ...

Designed as a drop-in BBU battery replacement lithium solution, this rugged 3U rack mount battery for base stations delivers uncompromising reliability where traditional lead-acid ...

[Get Price](#)

Base Station Lithium Replacement , HuiJue Group E-Site

Battery leasing models are gaining traction, with Ericsson's Energy Infrastructure Program reporting 14 operators adopting pay-per-cycle schemes in Q2 2023. This shifts the technology ...

[Get Price](#)


Use of Batteries in the Telecommunications Industry

The Alliance for Telecommunications Industry Solutions is an organization that develops standards and solutions for the

ICT (Information and Communications Technology) industry.

[Get Price](#)



Base station battery replacement standards

Abstract: Battery is the main means of power storage in the power supply system of communication base stations. This paper focuses on the engineering application of battery in

[Get Price](#)



How about base station energy storage batteries , NenPower

One significant aspect of these batteries is their ability to improve grid resilience, which is crucial in areas prone to power interruptions. This detailed analysis provides an ...

[Get Price](#)



STANDARD BATTERY MODULES FOR BASE ...

Small size, high voltage, and big capacity -- better traditional lead-acid battery replacement choice. Standard server size that can be built-in 19 ...

[Get Price](#)

Ring Alarm Base Station v2 , home security , Amazon

Ring Alarm Base Station makes sure you never let your guard down with a 24-hour backup battery. After you add Alarm Sensors, sold separately, subscribe ...

[Get Price](#)

Contact Us

For catalog requests, pricing, or partnerships, please visit:
<https://www.barkingbubbles.co.za>