

SolarInvert Energy Solutions

Base station wind power system commissioning



Overview

The key steps in commissioning the offshore substation and cabling include visual inspection, mechanical testing, protection testing, electrical insulation testing, pre-energisation checks, trip tests and load checks.

Base station wind power system commissioning



Commissioning Procedure , AE 868: Commercial Solar Electric Systems

Commissioning Procedure After the installation of any PV system is completed and the inspection is done, the system will be ready to be plugged to the grid to transfer energy. That process is ...

[Get Price](#)

Windfarm Commissioning Strategy

A commissioning plan is a guide used by commissioning teams and project managers to establish the scope and responsibilities to be carried out in order

...

[Get Price](#)



Installation & Commissioning

Installation & Commissioning is a critical competency in the wind energy sector, ensuring that wind turbines and associated infrastructures are properly ...

[Get Price](#)



Commissioning Your Power System

Power system commissioning is a systematic approach that makes sure: Breaker and relay settings are setup through a proper ...

[Get Price](#)



Commissioning Services for Wind Power Projects , Kiwa

Our expert team specializes in both onshore and offshore projects, offering tailored solutions and technical proficiency. From meticulous inspections to system testing and performance ...

[Get Price](#)

Presentation_GSMA_November_2011_pa2

5) Power management system For capturing maximum energy available and to ensure safe operation, Zephyr proprietary algorithms have been built in. They enable non-stop operation ...

[Get Price](#)



Ripwave Base Station Installation and Commissioning Guide

This comprehensive guide outlines the procedures for installing and commissioning the Ripwave Base Station, a vital component of a wireless

communications system.

[Get Price](#)



I.6.2 Commissioning , Guide to an offshore wind farm

The key steps in commissioning the offshore substation and cabling include visual inspection, mechanical testing, protection testing, electrical insulation testing, pre-energisation checks, trip ...

[Get Price](#)



Best practice in commissioning and maintenance of electrical power

Commissioning of power systems The commissioning of power systems may, at first glance, looks like a purely engineering activity, but it's however, also a management ...

[Get Price](#)

Windfarm Commissioning Strategy

A commissioning plan is a guide used by commissioning teams and project managers to establish the scope and responsibilities to be carried out in order to ensure and verify that an asset or ...

[Get Price](#)


 **TAX FREE**





ENERGY STORAGE SYSTEM

Product Model
 HJ-ESS-215A(100KW/215KWh)
 HJ-ESS-115A(50KW 115KWh)

Dimensions
 1600*1280*2200mm
 1600*1200*2000mm

Rated Battery Capacity
 215KWH/115KWH

Battery Cooling Method
 Air Cooled/Liquid Cooled



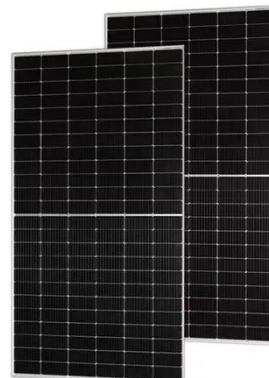
offshorewindfarmhfd2

"The example" Throughout this lecture "Horns Rev" will be used to exemplify the design of a state-of-the-art large scale offshore wind farm

[Get Price](#)

Commissioning, Operation and Maintenance

Commissioning of an individual turbine can take little more than two days with experienced staff. Commissioning tests will usually involve standard electrical tests for the electrical ...

[Get Price](#)


How to Conduct Power System Testing and Commissioning

Introduction The process of ensuring that a power system operates safely, reliably, and efficiently involves power system testing and commissioning. This

essential phase verifies ...

[Get Price](#)



Wind Turbine Technician Core Competencies

Background Wind energy generation is a form of renewable electricity generation comprised of individual generating units spread across an extensive area either offshore or onshore. Each ...

[Get Price](#)



Overview of the development of offshore wind power generation ...

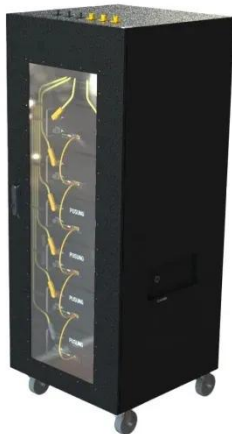
In China, the development of onshore wind power has been relatively saturated, so exploitation of offshore wind power will become an important means to address the ...

[Get Price](#)



Commissioning in Construction: Roles, Phases, and ...

Commissioning in construction is a crucial process that ensures building systems function optimally and meet project requirements. It spans ...

[Get Price](#)

4 Key Steps in Grid Connection, Commissioning, and Maintenance for Wind

Commissioning involves testing every aspect of the wind farm to ensure that all components function correctly and that the system operates at optimal efficiency. This process ...

[Get Price](#)

Installation & Commissioning

Installation & Commissioning is a critical competency in the wind energy sector, ensuring that wind turbines and associated infrastructures are properly installed, connected, and ready for ...

[Get Price](#)

Wind Turbine Commissioning: Electrical System Design

This article provides an in-depth guide on electrical system design and installation tailored for wind turbine

commissioning, highlighting the integral process from concept to on-site execution.

[Get Price](#)



Importance of a Robust Commissioning Strategy for ...

A commissioning strategy provides a systematic and organized approach to integrating the diverse components of an offshore wind farm. This ...

[Get Price](#)



I Installation and commissioning , Guide to an offshore wind farm

All installation and commissioning of balance of plant and turbines, including land- and sea-based activity. For offshore activities, the process starts by transporting components from the nearest ...

[Get Price](#)

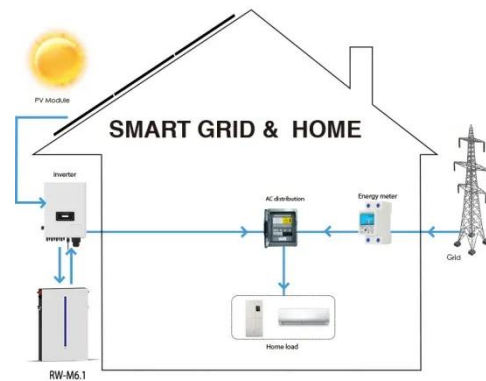


Commissioning and In-Service Inspections

Operation and maintenance of wind turbines is costly. One of the approaches to reduce O& M costs is to carry out a

full Commissioning Inspection followed by regular In-Service Inspections ...

[Get Price](#)



How is a wind turbine installation?

Testing and Commissioning: Once the wind turbine installation is completed, testing and commissioning of the system follow, including checking ...

[Get Price](#)

Commissioning and Acceptance Testing Are the ...

Electrical commissioning (ECx) is the systematic process of verifying, documenting, and placing into service newly installed or retrofitted ...

[Get Price](#)



A detailed checklist for the installation and commissioning of Gas

Inspections and tests for GIS Gas-insulated substations (GIS) are critical components of modern electrical power

systems, providing efficient and compact solutions for ...

[Get Price](#)



4 Key Steps in Grid Connection, Commissioning, and ...

Commissioning involves testing every aspect of the wind farm to ensure that all components function correctly and that the system operates at ...

[Get Price](#)



12 V 10 AH



Installation and commissioning

Our commissioning process includes all elements of design and functional specifications, ensuring seamless system operation and integration. From a single generating unit to full turnkey ...

[Get Price](#)

Importance of a Robust Commissioning Strategy for Offshore Wind ...

A commissioning strategy provides a systematic and organized approach to integrating the diverse components of

an offshore wind farm. This includes turbines, ...

[Get Price](#)



I Installation and commissioning , Guide to an offshore ...

All installation and commissioning of balance of plant and turbines, including land- and sea-based activity. For offshore activities, the process starts by ...

[Get Price](#)

Contact Us

For catalog requests, pricing, or partnerships, please visit:
<https://www.barkingbubbles.co.za>