

SolarInvert Energy Solutions

Battery cabinet charging current and voltage changes



Overview

What happens if you charge a lithium ion battery below voltage?

Going below this voltage can damage the battery. Charging Stages: Lithium-ion battery charging involves four stages: trickle charging (low-voltage pre-charging), constant current charging, constant voltage charging, and charging termination. Charging Current: This parameter represents the current delivered to the battery during charging.

Why does the charging current decrease as the battery charges?

Since the voltage is constant, the charging current decreases as the battery charges. A high current value is required to provide a constant terminal voltage at an early stage of the charging process.

What happens when a battery is fully charged?

At this stage, the battery voltage remains relatively constant, while the charging current continues to decrease. Charging Termination: The charging process is considered complete when the charging current drops to a specific predetermined value, often around 5% of the initial charging current.

What happens when a battery reaches a full charge threshold?

Once the voltage approaches the full charge threshold, the charging mode transitions to constant voltage, allowing the battery to absorb energy at a slower rate until fully charged. Statistical measurements provide valuable insights into voltage changes during charging cycles.

How to charge a lithium ion battery?

While simple constant current battery charging circuits can provide low cost and relatively slow charging, multi-stage technologies are needed for better performance. For Li-ion batteries, the charging must be terminated; trickle charging is not acceptable.

How does a battery charge work?

Initially, the battery voltage rises steadily as current flows into the cell. Once the voltage approaches the full charge threshold, the charging mode transitions to constant voltage, allowing the battery to absorb energy at a slower rate until fully charged.

Battery cabinet charging current and voltage changes



Comprehensive Guide to Lithium Battery Cell Voltage ...

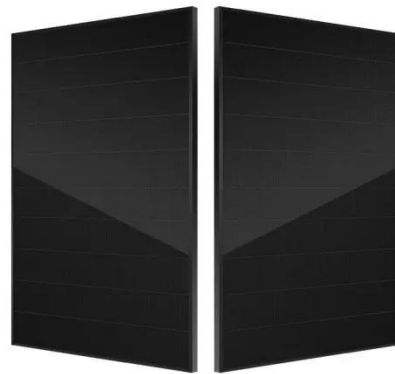
Understand lithium battery cell voltage during charging and discharging, including safe ranges, cutoff limits, and how voltage impacts ...

[Get Price](#)

The voltage of lithium-ion batteries changes during charging and

When the battery voltage rises above the trickle charging threshold, it enters the constant current charging stage. At this time, the charging current is increased, and the battery ...

[Get Price](#)



Solar System Connection



NICKEL-ZINC BC 2 UPS Battery Cabinets

The ZincFive BC 2 lineup offers the world's leading NiZn (Nickel-Zinc) battery system with backward and forward compatibility with mission critical UPS systems.

[Get Price](#)

Understanding Charge Voltage and Modes for Batteries

This article delves into the specifics of battery charge voltage and charging modes, providing a comprehensive overview that will help you maximize battery performance and safety.

[Get Price](#)



Battery Room Ventilation and Safety

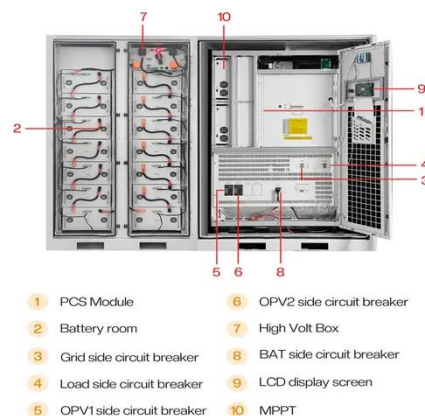
This safety factor is to allow for hydrogen production variations with changes in temperature, charge controller failure, and reduction in net volume of battery room due to battery equipment ...

[Get Price](#)

Lithium-Ion Battery Current Variation During Charging ...

When charging a lithium-ion battery, the charging current, or the amount of electrical energy supplied to the battery, is an important factor to ...

[Get Price](#)



LITHIUM ION BATTERY CHARGING CABINET

What is a lithium ion battery charging and storage cabinet? The new Justrite lithium ion battery charging and storage



cabinet provides the ideal storage solution. Featuring ChargeGuard(TM) ...

[Get Price](#)

Battery Management Systems-Part 3: Battery ...

Since the voltage is constant, the charging current decreases as the battery charges. A high current value is required to provide a constant ...

[Get Price](#)



Battery Chargers and Charging Explained

The battery saturates when it reaches the voltage limit; the current reduces until the battery could no longer receive any more charge, and the ...

[Get Price](#)

How to Design a Simple and Highly Integrated Battery ...

The charging current is equal to the set value, while the effective feedback loop switches from the voltage loop to the current loop, and the charging mode

changes from a constant voltage to a ...

[Get Price](#)



Lithium-ion Battery Charging: Voltage & Current Explained

Learn how voltage & current change during lithium-ion battery charging. Discover key stages, parameters & safety tips for efficient charging.

[Get Price](#)

Battery Management Systems-Part 3: Battery Charging Methods

Since the voltage is constant, the charging current decreases as the battery charges. A high current value is required to provide a constant terminal voltage at an early ...

[Get Price](#)



Basics of battery charging circuit design

Once a pre-determined charge level is reached, depending on the specific battery being charged, fast charging occurs based on a constant ...


[Get Price](#)

Evaluating Battery Charger Voltage Characteristics

This article focuses on the voltage characteristics in battery chargers and their relation to battery charging and examines voltage charging ...

[Get Price](#)


The Relationship and Differences Between Voltage and Current ...

Yes, the voltage of a lithium-ion battery changes with its State of Charge (SOC): During charging: Voltage gradually increases and stabilizes at around 4.2V when fully charged. During ...

[Get Price](#)

Lithium-ion Battery Charging: Voltage & Current ...

Learn how voltage & current change during lithium-ion battery charging. Discover key stages, parameters & safety tips for efficient charging.

[Get Price](#)

Battery Voltage: Basics and Importance for Optimal Performance

Have you ever wondered what the voltage on a battery means, or why it's such a critical factor in choosing the right one for your device or vehicle? Whether you're picking a ...

[Get Price](#)

Comprehensive Guide to Lithium Battery Cell Voltage During Charging ...

Understand lithium battery cell voltage during charging and discharging, including safe ranges, cutoff limits, and how voltage impacts performance and safety.

[Get Price](#)

[Guide for Users] Battery Charging and Discharging ...

Learn the differences between charging and discharging voltage. Explore their effects on battery performance, and



discover how they influence ...

[Get Price](#)

Basics of battery charging circuit design

Once a pre-determined charge level is reached, depending on the specific battery being charged, fast charging occurs based on a constant current approach until a critical ...

[Get Price](#)



Understanding Charge Voltage and Modes for Batteries

Charge voltage refers to the specific voltage level applied during charging cycles, which varies by battery chemistry (e.g., lithium-ion vs lead-acid). Charging modes include ...

[Get Price](#)

The Relationship and Differences Between Voltage ...

Yes, the voltage of a lithium-ion battery changes with its State of Charge (SOC): During charging: Voltage gradually increases and stabilizes at around 4.2V

...

[Get Price](#)

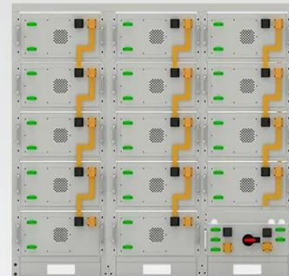
Battery Charging

The constant voltage charging cycle is divided into two separate segments: The current limit (sometimes called constant current) phase of charging is where the maximum charging current ...

[Get Price](#)

Voltage vs Current: Difference Explained & Key ...

Part 3. What is battery current? On the other hand, current is the flow of electric charge through a conductor or circuit. It is measured in units ...

[Get Price](#)

Battery String-S224

- 1C Charge/Discharge
- Easy configuration and maintenance
- Power supply can be single battery string or parallel battery strings

Understanding Charge Voltage and Modes for Batteries

This article delves into the specifics of battery charge voltage and charging modes, providing a comprehensive overview that will help you maximize

battery performance and safety.

[Get Price](#)



Does battery voltage change based on voltage supplied to charge ...

Battery voltage will match the charging voltage while on charge as long as charging current can be supplied. Once off charge (disconnected) battery voltage may sag a little to 'rest' voltage ...

[Get Price](#)



Lithium-Ion Battery Current Variation During Charging And ...

When charging a lithium-ion battery, the charging current, or the amount of electrical energy supplied to the battery, is an important factor to consider. A higher charging ...

[Get Price](#)



Designing Ventilation For Battery Rooms , 2018-05-07 ...

When calculating the H₂ evolution rate, the following factors need to be considered: types of batteries used

(VRLA, flooded lead-acid, or Ni-Cd), ...

[Get Price](#)



Contact Us

For catalog requests, pricing, or partnerships, please visit:
<https://www.barkingbubbles.co.za>