

## SolarInvert Energy Solutions

# Battery cabinet front and rear distance requirements



## Overview

---

The UL 9540A testing shows that the manufacturers installation and spacing recommendations included in these products' Quick Installation Guides (QIG) are adequate and allow a separation distance less than 3 ft. What is the minimum clearance for a battery rack?

For battery racks, there shall be a minimum clearance of 25 mm (1 in.) between a cell container and any wall or structure on the side not requiring access for maintenance. Battery stands shall be permitted to contact adjacent walls or structures, provided that the battery shelf has a free air space for not less than 90 percent of its length.

How much space do you need for a battery system?

Spaces about battery systems shall comply with 110.26. Working space shall be measured from the edge of the battery cabinet, racks, or trays. For battery racks, there shall be a minimum clearance of 25 mm (1 in.) between a cell container and any wall or structure on the side not requiring access for maintenance.

How far apart should IQ batteries be stacked?

Enphase IQ Battery 3, 3T, 10, and 10T test was conducted at the manufacturers recommended mounting distances with a minimum of 6" between vertically stacked units, 1" horizontally between IQ Battery 3/3T, and 6" clearance on the sides for IQ Battery 10/10T. The IQ Battery datasheets detail that they have been certified to UL9540A.

What are the safety requirements related to batteries & Battery rooms?

Employers must consider exposure to these hazards when developing safe work practices and selecting personal protective equipment (PPE). That is where Article 320, Safety Requirements Related to Batteries and Battery Rooms comes in.

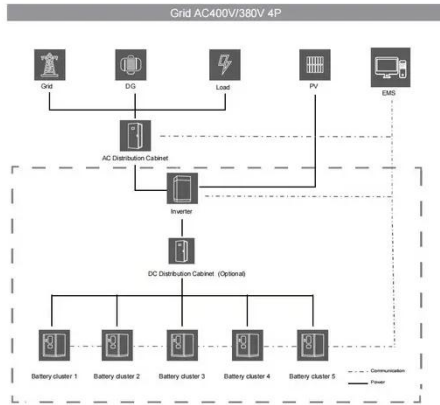
What are the requirements for a battery installation?

1. Space Planning and Layout 900mm min Battery Room Layout 1200mm Primary Access End Access 1000mm Battery Racks Industrial battery installations require adequate spacing for maintenance, ventilation, and safety. The layout should accommodate: 2. Structural Requirements.

What are the requirements for a battery location?

Battery locations shall conform to 480.9 (A), (B), and (C). (A) Ventilation. Provisions appropriate to the battery technology shall be made for sufficient diffusion and ventilation of gases from the battery, if present, to prevent the accumulation of an explosive mixture. (B) Live Parts. Guarding of live parts shall comply with 110.27.

## Battery cabinet front and rear distance requirements



### Eaton Samsung Gen 3 Battery Cabinet Installation and ...

The primary air inlets are in the front of the cabinet, side and rear panels are vented to allow for air flow. Allow clearance in front of the cabinet for proper air circulation.

[Get Price](#)

### Heating Furnace Clearance Distances

Warm air furnace installation clearances & fire clearances: What are the required clearance distances around a heating furnace: here we provide a table of ...

[Get Price](#)



### Fuji Electric, UPS Installation Requirements

Learn about the key installation requirements for Fuji Electric UPS systems. Ensure a reliable and efficient power backup setup.

[Get Price](#)



### NEC Essentials for Architects

Equipment "Clearances" The term "clearance" is commonly used throughout design and construction circles to refer to free space around electrical equipment. However, it is important ...

[Get Price](#)



### 480.9 Battery Locations.

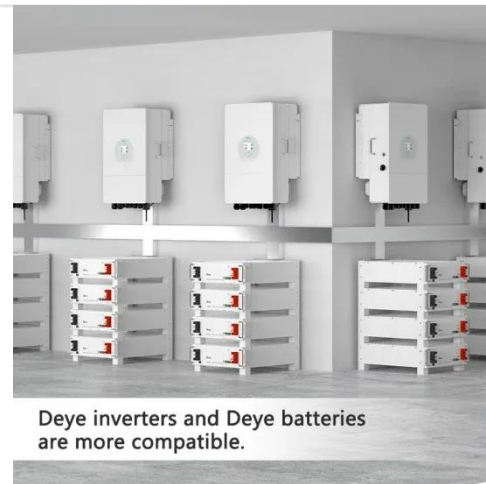
Working space shall be measured from the edge of the battery cabinet, racks, or trays. For battery racks, there shall be a minimum clearance of 25 mm (1 in.) ...

[Get Price](#)

### General requirements for cabinets and racks

The distance between the rear of the chassis and the perforated rear door of the cabinet (required for airflow in the cabinet, if used) should be a minimum of 3.0 in. (7.6 cm).

[Get Price](#)



### EG4 BESS Spacing

The following document clarifies BESS (Battery Energy Storage System) spacing requirements for the EG4 WallMount batteries / rack mount six slot battery cabinet installations.

[Get Price](#)


## Fire Alarm Panel and External Battery Distance/Location

Different panel manufacturer's appear to have different requirements on distance external standby battery cabinets can be from the panel, and some specify same room.


[Get Price](#)

**18650** 3.7V  
Li-ion  
RECHARGEABLE BATTERY  
**2000mAh**



## Battery Cabinet

Floor space requirements include working space in front of the cabinet and, for seismic locations, clearance between the cabinet and adjacent equipment. See Figure 1.

[Get Price](#)

## UPS/DC Battery Room, Equipment Installation Requirements

QC Before Installation - Battery room  
Equipment shall conform to all applicable requirements, standards, and specifications prior to release to be used

as part of work. Incoming Battery ...

[Get Price](#)



### IFC Mounting Requirements for IQ Battery Systems

In the IRC, IFC, NFPA 855, and UL 9540, the separation between ESS when installed is defined to be at least 3 ft (914 mm). IFC and CRC also provide guidance that an ...

[Get Price](#)

### Energy storage systems-NEC Article 706

Energy storage system modules, battery cabinets, racks, or trays are permitted to contact adjacent walls or structures, provided that the battery ...

[Get Price](#)



### Choose a Location that Meets Powerwall 3 Clearance Requirements ...

Powerwall 3 requires adequate clearance for installation, cabling, and airflow. The spacing on either side of units and



between units is required to ensure there is sufficient clearance for ...

[Get Price](#)

## The distance between energy storage containers

Electrical energy storage (EES) systems - Part 5-3. Safety requirements for electrochemical based EES systems considering initially non-anticipated modifications, partial replacement, ...

[Get Price](#)



## Galaxy VS

Push the modular battery cabinet into position so the rear anchoring bracket connects to the rear anchors. The front anchoring bracket is installed in the final installation steps.

[Get Price](#)



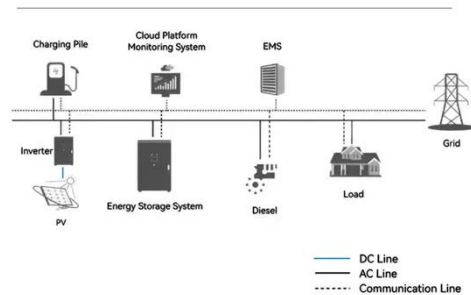
## Designing Industrial Battery Rooms: Fundamentals and Standards

Industrial battery rooms require careful design to ensure safety, compliance, and operational efficiency. This article covers key design considerations and relevant

standards.

[Get Price](#)

### System Topology



### Battery Cabinets

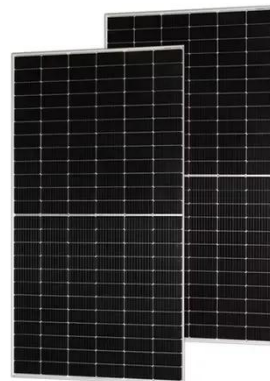
The Battery cabinet is designed to house standard VRLA Batteries of capacity range from 24Ah to 105Ah (C10). The battery cabinets are available in 5 ...

[Get Price](#)

### Safety Clearance Recommendations for Electrical Panel

Clearance Tables includes working space and clearance around indoor electrical panel, Circuit Board (NES 312.2), clearance for conductor ...

[Get Price](#)



### Choose a Location that Meets Powerwall 3 Clearance ...

Powerwall 3 requires adequate clearance for installation, cabling, and airflow. The spacing on either side of units and between units is required to ensure



there is ...

[Get Price](#)

## 480.9 Battery Locations.

Working space shall be measured from the edge of the battery cabinet, racks, or trays. For battery racks, there shall be a minimum clearance of 25 mm (1 in.) between a cell container and any ...



[Get Price](#)



## Data rack clearance

We use all APC NetShelter 1200mm deep cabinets which measure 48 inches deep and 24 inches wide. Our standards require 48 inches of clearance in the ...

[Get Price](#)

## Best Practices and Considerations for Siting Battery Storage ...

o Depending on the size of the battery and needs of the site, it is important to determine early on if the battery will be sited in the facility or outside of it. o This

decision may be impacted by any ...

[Get Price](#)



### **BC55 Battery Cabinet Installation, Operation, & Maintenance ...**

Isolates the battery cabinet from the UPS  
Divides the 480VDC battery string into two (2) battery strings of 240VDC each.  
Unlocks the battery cabinet doors to allow access to the cabinet ...

[Get Price](#)

### **PowerXpert 9395 UPS 550 kVA installation and operational ...**

**C A U T I O N** If Eaton battery cabinets are located in the same room as the UPS, the battery cabinet environmental requirements supersede the UPS requirements. Operating ...

[Get Price](#)



## **Contact Us**

For catalog requests, pricing, or partnerships, please visit:  
<https://www.barkingbubbles.co.za>