

SolarInvert Energy Solutions

Can a 12V inverter use 17V



Overview

What voltage should a 12V inverter run on?

The input voltage of the inverter should match the battery voltage. (For example 12v battery for 12v inverter, 24v battery for 24v inverter and 48v battery for 48v inverter Summary What Will An Inverter Run & For How Long?

.

How many volts does a 16V inverter have?

There is no specific 16V inverter, so I purchased 3 different 12V-24V inverters which also took into account any voltage variation. I tested both the front/rear 16V outlets getting anywhere from 14.2V - 15.7V depending on the battery voltage.

Can a 12V solar panel use a 24V inverter?

A 12V solar panel must use with a 12V inverter and a 24V solar panel must use with a 24V inverter. On top of that a series connection is required to maintain the same voltage between the battery, inverter and the solar panel Check out 12V, 24V and 48V inverters here. To keep things simple, just remember to keep the voltage the same.

What is a 12V solar inverter?

The inverter's job is to turn power from DC to AC. 12V solar panels are applicable for small size solar system projects for: Most RV and motorhomes already have 12V batteries for AC, refrigerator, water heater control and lighting. So it makes perfect sense to use 12V for these type of systems.

Which is the best 12-volt power inverter?

The Energizer 12 Volt Power Inverter is considered the best due to its superior features, specifically its running wattage of 4,000 watts, which should be able to power all appliances at home, in the office, or in an RV.

Do 12 volt solar panels need a battery?

The 12 volt solar panels have an open circuit voltage about 17 Volt. All the 12V inverters have an input range 10 to 15 volt, and 17 volt is an overvoltage. I don't want to use a battery because I don't need to store the power. I don't want to invest in one, batteries don't last long.

Can a 12V inverter use 17V



i need to modify the input voltage of my inverter or buy one that ...

My solution was to rearrange the cells into a 4s 12p configuration, however, the voltage than was too high at 16.4 volts. I was wondering if there was any way to adjust the ...

[Get Price](#)

Solar panels voltage too high : r/solarenergy

Usually, panels are designed for 12V but they tend to go up to 16V-17V or more. The other day I was testing panels with a car battery inverter and a car 12V battery and they were working ...



[Get Price](#)



Power inverters that work with the 16v output

Yes, there is a range of acceptable voltages. But it normally tops out at 15v because that's the usual output voltage for alternators. This Victron Pheonix inverter only says ...

[Get Price](#)

Is it okay to use a power supply that provides slightly ...

The weird symbol indicates its a DC output. This laptop adapter supplies an output voltage of 19 V and a maximum output current of 3.42 A, well above ...

[Get Price](#)



What inverters work with the 16 volt Tesla low voltage power ...

The Tesla owners manual says that after Nov 2021, " power inverters plugged into the low voltage power socket must support 16 V DC to function." Who has found a manufacturer of a good ...

[Get Price](#)

What can 17V solar energy do? , NenPower

Generally, 17V solar energy systems are designed for off-grid applications or to charge batteries; however, a grid-tied system is possible with the right adapters and inverters.

[Get Price](#)

ESS



Power Inverters for newer 16V Outlet Cars

There is no specific 16V inverter, so I purchased 3 different 12V-24V inverters which also took into account any voltage variation. I tested both the front/rear ...

[Get Price](#)


12 Volt from solar panel converted to 120VAC without battery

The 12 volt solar panels have an open circuit voltage about 17 Volt. All the 12V inverters have an input range 10 to 15 volt, and 17 volt is an overvoltage. I don't want to use a ...

[Get Price](#)


The best power inverters for cars and campervans

How a power inverter works Inverters can be used for domestic and commercial use and thus range enormously in size, price and performance. ...

[Get Price](#)

Can I Use a 24V Inverter on a 12V Battery?

Inverter and battery voltages have to match for best results. But there are ways to use a 12V battery with a 24V inverter.

[Get Price](#)


Having trouble finding 16V inverter for my 2022 model Y

A normal 12V inverter will probably be fine. In normal ICE cars there is significant variance on the actual voltage, it's usually 14-15V when the car is running.

[Get Price](#)

Can I Connect a 12V Inverter to a 24V Battery Bank

However, converters can add complexity and minor energy losses, so consider whether upgrading to a 24V inverter might be better. Can I use a 24V inverter on a 12V battery ...

[Get Price](#)


17 volts solar panel

Some charge controllers reduce this voltage and increase the output current. If I make panels with 17v or 16v output, I could use the extra cells to build more panels and ...

[Get Price](#)


Calculate Battery Size For Any Size Inverter (Using ...

So I have made it easy for you, use the calculator below to calculate the battery size for 200 watt, 300 watt, 500 watt, 1000 watt, 2000 ...

[Get Price](#)


Calculate Battery Size For Any Size Inverter (Using Our Calculator)

So I have made it easy for you, use the calculator below to calculate the battery size for 200 watt, 300 watt, 500 watt, 1000 watt, 2000 watt, 3000 watt, 5000-watt inverter

[Get Price](#)

Victron Energy 12V 1200VA Phoenix Inverter 230V

The operating time of the inverter is determined by the size and type of battery you use, but more specifically it is determined by how much power you

draw. ...

[Get Price](#)



32 Common Faults in Inverters and Their Solutions

Discover the top 32 reasons for inverter failure and how to fix them with our comprehensive troubleshooting guide. Ensure your inverter is always ...

[Get Price](#)

Can I Use a 48V Battery on a 12V Inverter? How Can!

A 48V battery can be used on a 12V inverter, but it is not recommended. The reason for this is because the voltage of the battery will be too high for the inverter, which ...

[Get Price](#)



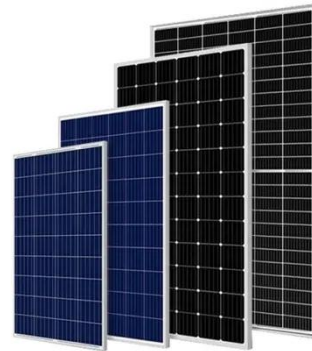
12V to 120V Inverter

The wattage depends on which transistors you use for Q1 and Q2, as well as how "big" a transformer you use for T1. The inverter can be constructed to supply ...

[Get Price](#)

Power inverters that work with the 16v output

Yes, there is a range of acceptable voltages. But it normally tops out at 15v because that's the usual output voltage for alternators. This Victron ...

[Get Price](#)

i need to modify the input voltage of my inverter or buy one that can

My solution was to rearrange the cells into a 4s 12p configuration, however, the voltage than was too high at 16.4 volts. I was wondering if there was any way to adjust the ...

[Get Price](#)

Install Pure Sine Wave Inverters: Everything You Need to Know

Explore the significance of pure sine wave inverters, get an insight into how they function, and discover various installation options for power conversion.

[Get Price](#)


12 Volt DC Power Inverter: In-Depth Learning and ...

Discover how a 12-volt DC power inverter works, its applications, and how to choose the best one, Topbull inverters, for reliable and safe power ...

[Get Price](#)

Using 220V wiring for a 12V setup

I am living in a static house that uses a 220V system for lighting fridge etc, I wish to set my solar system up using 12V not 220, I have a gas fridge and don't need 220V, I will only ...

[Get Price](#)


Power Inverters for newer 16V Outlet Cars

There is no specific 16V inverter, so I purchased 3 different 12V-24V inverters which also took into account any voltage variation. I tested both the front/rear 16V

outlets getting anywhere from ...

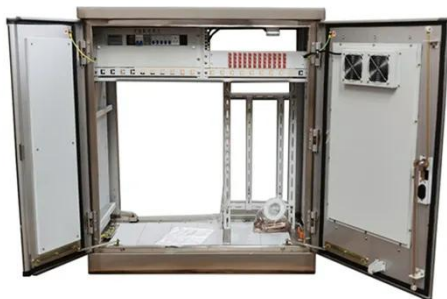
[Get Price](#)



Calculate Battery Size For Any Size Inverter (Using ...

Instructions! Inverter runtime: is the total number of hours you would need to run your load on an inverter Inverter input Volts (V): Are you ...

[Get Price](#)



over charger batteries???? 12v now is over 17v?????: (

You cant and dont need to put a 24v inverter into a 12volt system. If the system has been working fine with 12v components it will again once you solve the overcharging problem

[Get Price](#)

Contact Us

For catalog requests, pricing, or partnerships, please visit:
<https://www.barkingbubbles.co.za>