

SolarInvert Energy Solutions

Can a 60v inverter use a 48v battery



Overview

Using a 60V battery on a 48V motor is technically possible but not recommended. The higher voltage can lead to overheating, damage to the motor, and reduced lifespan. It may also void warranties and create safety hazards. Can a 60V battery power a 48V motor?

A 48V motor is designed to handle 48 volts of electrical input. When considering using a 60V battery on a 48V motor, compatibility is an important factor.

Should I use a 60V to 48V converter?

If you want to use all the remaining cells a "dc to dc converter 60V to 48V" would do just that. However they are hard to get for that voltage and high amps. if your controller can take 60v it will be fine just keep an eye on motor temps and avoid WOT if you find it gets hot Dana Point So. Cal It's. Best to have one big battery.

Do I need a 12V or 48V inverter?

Simply put, if you have a 12V system, you need a 12V inverter; a 48V system requires a 48V inverter. Standard Pure Sine Wave inverters simply change DC power to AC power. Inverter Chargers handle this function plus allow you to charge your batteries off shore power or a generator. Renogy's 3500W Solar Inverter Charger is designed for a 48V system.

Can a 60V battery be used on a 48V motor?

Using a 60V battery on a 48V motor can pose some risks and safety concerns. One of the main risks is the potential for overheating. The motor may not be able to handle the increased power, leading to excessive heat generation.

Can a controller take 60V?

if your controller can take 60v it will be fine just keep an eye on motor temps and avoid WOT if you find it gets hot Dana Point So. Cal It's. Best to have one

big battery. A bunch of tool packs spaghetti string together ?

A battery need to be balance all cells same voltage and capacity. Sunder said:.

Does the motor matter if I use a 60V pack?

The motor doesn't matter. It all depends on the controllers max voltage limit. Most with an lcd display are limited to 60V max by the display and 63V max by the controller. You need to know the max voltage charge of your 60V pack to determine if it will work with your setup. What's the specs on the pack?

Can a 60v inverter use a 48v battery



Using 5x 12volt batteries for 60V.. CC-OK Inverter-NOK

Adding 3 more for a total of 8 permits a 48V @ 400AH (series / parallel) battery configuration. 19.2kWH energy storage capacity provides a more reasonable runtime for an ...

[Get Price](#)

How to step down from 60V so my 48V inverter will work

For your inverter to work you will need both a battery system and charge controller. Solar panels will not produce the correct amount of voltage for the inverter to run ...



[Get Price](#)



Can a 48V Inverter Safely Connect to a 60V Battery Key Insights

Understanding Voltage Compatibility
Inverters and batteries must "speak the same voltage language" to work efficiently. A 48V inverter is designed for 48V battery banks, but what ...

[Get Price](#)

Is it permissible to use a 60V battery with a 48V motor?

In summary, while it is permissible to use a 60V battery with a 48V motor, careful consideration of the associated risks is essential. Users should ensure that their controllers are ...

[Get Price](#)



Battery disconnect for nominal 48v systems?

I would just add one of those in so that I can turn off the battery but they are rated at 48v max, and Blue Sea says they aren't for use with 48v ...

[Get Price](#)

How to use a 60v battery pack on 48v motor

At worst, you will need a new controller, but if max charge is 60V, then it will work fine without a problem. It's the controller you need to worry about more than the motor. If the ...

[Get Price](#)



Can You Use a 60V Battery on a 48V Motor?

Using a 60V battery with a 48V controller is generally not recommended, as it can lead to overheating and potential damage to the motor. While some



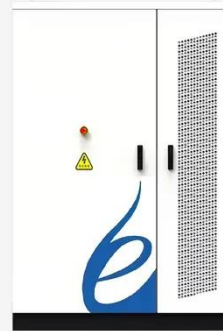
controllers may handle the ...

[Get Price](#)

Best 12VDC to 240VAC Inverters for Reliable Power Conversion

2 days ago· The Eastnmythet 5000W inverter supports a flexible input voltage selection including 12V, 24V, 48V, 60V, or 72V DC, adapting well for various battery systems. It outputs a default ...

[Get Price](#)



Inverter Amp Draw Calculator

In reality, inverters have some efficiency losses, and the actual amp draw might be slightly higher. The lowest battery voltages taken for 12V, ...

[Get Price](#)

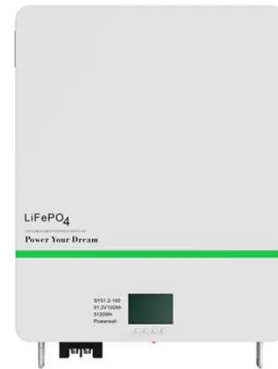
Running a 48v controller and motor

--

Are you looking to buy a new motor and a new controller to use with your existing battery pack? Or just a new controller to use with your current motor

and battery pack? ...

[Get Price](#)



How to use a 60v battery pack on 48v motor

At worst, you will need a new controller, but if max charge is 60V, then it will work fine without a problem. It's the controller you need to worry ...

[Get Price](#)

1500 Watts Pure Sine Wave Power Inverter, 12V 24V 48V 60V ...

[Powerful Power Inverter]: This power inverter has multiple specifications, It can convert 12V/24V/48V/60V/72V DC to 110V/120V AC, and the output current is suitable for all kinds of ...

[Get Price](#)



Trying to make my 60v battery usable for my 48v BBSHD, over ...

You can't use a 60v battery for a 48v motor. The max cutoff is 60v. That's why having a 52v (14 cell) fully charged battery would be at 58.8v. Every cell you

add to the 14c ...

[Get Price](#)



60v battery to 48v bike

I think many of the 48v stuff can do 60 but guessing full charge on the 60v pack is higher. There seems to be a big cost difference in the components required to handle more ...

[Get Price](#)



Can a 60V Inverter Work with a 48V Battery Compatibility Explained

Understanding Voltage Compatibility
Many solar energy users ask: "Can my 48V battery bank power a 60V inverter?" The short answer is yes - but it's like trying to drink a thick milkshake ...

[Get Price](#)

Running a 48v controller and motor

--

I have a 60v system (five batteries) and I want to upgrade my motor and controller without changing up the charging system. I have been looking at

a Golden Motor 5Kw and ...

[Get Price](#)



Amazon : 6000W DC 12V/24V/48V/60V/72V Pure Sine Wave Inverter

About this item [High Efficiency Inverter]: It Can Convert 12V/24V/48V/60V/72V DC Power to 110V~120v,220v-240v AC Household Power with AC Outlet. Output Power Can be ...

[Get Price](#)

Are 48v AIO inverter Charges viable for small battery/solar Systemd

If 60v is still a challenge, think about the Growatt 24v 3kw or the PowMr 24v 3.2kw units. They only need 30v to start working and a 24v battery is about half the physical space of ...

[Get Price](#)



Is it possible to run 36v motor on 48v battery?

In general, motors can easily take about 2x what they are rated for. Sometimes

even more. 52v x 10 amps will only be 500w, so ok even if the motor is rated 250w. So go for ...

[Get Price](#)



600W Micro Grid Tie Inverter for 24V 36V 48V 60V 72V 96V Battery

Amazon : 600W Micro Grid Tie Inverter for 24V 36V 48V 60V 72V 96V Battery Adjustable Output Power MPPT Pure Sine Wave Grid tie Inverter (Size : PV 26-45V Bat 24V, Color : 110 ...

[Get Price](#)



Can a 48V Inverter Safely Connect to a 60V Battery Key Insights

Wondering if your 48V inverter can handle a 60V battery? This guide explores voltage compatibility risks, practical solutions, and industry best practices for solar energy systems ...

[Get Price](#)

Different Battery and inverter voltages

Probably not. Most 48V inverters designed for lead acid will work at up to 60-66V as equalization of FLA can take the bank voltage above 64V. What's the

limit on yours? 60V / ...

[Get Price](#)



60v battery for 48v scooter? Step down voltage? : r

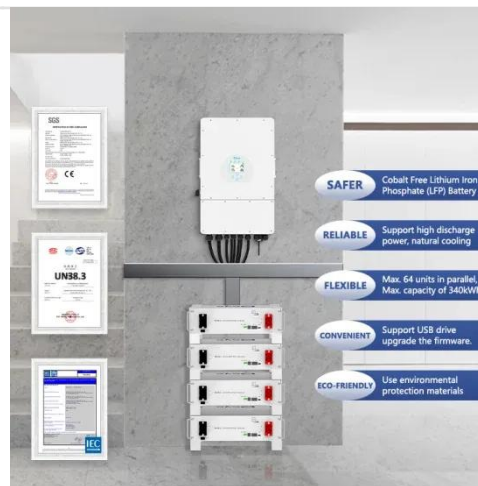
Hi,I am looking at battery packs and noticed a 60v 40ah battery pack sold for same price as 48v 20ah. Plugs are xt60 with charging cable (dc or t-plug). Is it possible to add a voltage regulator ...

[Get Price](#)

Battery build question using 16s battery pack

I did some research and almost all hybrid inverters I can find my area are rated for 48v or less than that (24, or 12v). With 48v I can still use the 60v battery pack but it will not be ...

[Get Price](#)



What's the maximum battery I can use for this type of controller

The eBike came with a 48V 20Ah battery. Also has dual motors rated at 1000w each. So I know it'll deplete fairly quickly. Any extra range, and speed,

would be nice of course. From what I ...

[Get Price](#)



Contact Us

For catalog requests, pricing, or partnerships, please visit:
<https://www.barkingbubbles.co.za>