

SolarInvert Energy Solutions

Can photovoltaic power stations be connected in series



Overview

Why should you connect solar panels in series?

Many people consider connecting solar panels in series as they become more affordable and effective. Solar panels are linked in series and collectively produce energy. Because it enables the most sunlight to reach the panel and make the most power, this solar panel installation method is typically the most effective.

How do I connect a solar panel to a power station?

How to wire: Before connecting the solar panel for charging, you should link the connector to the power station's DC input port. Once the power station has been fully charged, be careful to unplug the connector from the power station after removing the solar panel. Jackery SolarSaga 200W Compatible With Explorer 2000 Pro + 1*SolarSaga 200W.

Can I connect multiple solar panels in a system?

Parallel FAQs There are two options for connecting multiple solar panels in a system: series and parallel. Solar panels wired in series increase the volts of the solar array, but the amps remain the same. On the other hand, solar panels wired in parallel increase the amps while the volts remain the same.

How do I connect multiple solar panels together in series?

How to connect multiple solar panels together in series: Connect the positive (+) cable of one panel to the negative (-) one of the next panel. The female MC4 connector marks a positive cable and the male MC4 is the negative. Continue with the rest until all panels are connected.

Do all solar panels have the same voltage rating?

All solar cells in a series-wired solar array must have the same current (amperage) rating. Although the voltages of the panels will add up, the current output will be equivalent to that of the panel with the lowest rating in

the series. All solar cells in a parallel solar array should have the same voltage rating.

Can I wire two solar panels produced by different vendors?

When you intend to wire two panels produced by different vendors, the vendors are not the problem. The problem is in different electrical characteristics of the panels, together with different performance degradation. We put solar panels together to increase the solar-generated power.

Can photovoltaic power stations be connected in series



Mixing solar panels - Dos and Don'ts

There are two main types of connecting solar panels - in series or in parallel. You connect solar panels in series when you want to get a higher voltage. If you, however, need to get higher ...

[Get Price](#)

How many solar panels can be connected in series? , NenPower

Connecting solar panels in series involves linking them end-to-end to form a chain. This configuration increases the overall voltage output while the current remains constant. ...



[Get Price](#)



Should Solar Panels Be Connected In Series or Parallel?

Learn in detail should solar panels be connected in series or parallel. Discover the advantages and disadvantages of each configuration.

[Get Price](#)

How many solar panels can be connected in series?

Connecting solar panels in series involves linking them end-to-end to form a chain. This configuration increases the overall voltage output while ...

[Get Price](#)



How To Wire Solar Panels In Series Vs. Parallel

When you connect the positive terminal of one panel to the negative terminal of another panel, you create a series connection. When you connect two or more solar panels like this, it ...

[Get Price](#)

Can I Use Solar Panels of Different Wattage?

Bottom line, you can connect similar PV modules in a series and then connect the strings in parallel. Doing so can generate 100% efficiency in terms of what can go into your system. ...

[Get Price](#)



Connecting Solar Panels in Series or in Parallel?

To chain multiple photovoltaic modules -- like solar panels -- in an array, you must connect them together and to your portable power station or other ...

[Get Price](#)

Connecting Solar Panels in Series or in Parallel? , EcoFlow US

Series wiring increases the sum output voltage of a solar panel array but keeps amperage the same. Parallel wiring increases the sum output amperage of a solar panel array while ...

[Get Price](#)

What is a Series or Parallel Connection in Solar Panels?

Understanding series and parallel connections is the foundation of solar PV system design. Series wiring adds voltage, while parallel wiring adds current--each with its ...

[Get Price](#)

Ultimate Guide to Solar Panels in Series vs. Parallel

When you connect the positive terminal of one panel to the negative terminal of another panel, you create a series connection. When you connect two or

more solar panels like this, it ...

[Get Price](#)



Chapter number 3.0 Solar Cells, Modules & Arrays

In this process, it is assumed that all PV modules connected in series and in parallel are identical. The PV array power output can also be calculated from PV array voltage ...

[Get Price](#)

Modeling and Simulation of Photovoltaic Grid-Connected System

In China, the number of grid-connected photovoltaic power stations is increasing, so the integral modeling and grid-connected characteristic analysis of photovoltaic system are ...

[Get Price](#)



PVWatts Calculator

NREL's PVWatts ® Calculator Estimates the energy production of grid-connected photovoltaic (PV) energy systems throughout the world. It allows homeowners, small building owners, ...

[Get Price](#)

Guide to Connect Solar Panels in Series - PowMr

Connecting solar panels in series is a common approach. At this stage, it's crucial to align the series configuration with the specifications of your solar charge controller or hybrid ...

[Get Price](#)

Design and Sizing of Solar Photovoltaic Systems

Photovoltaic (PV) systems (or PV systems) convert sunlight into electricity using semiconductor materials. A photovoltaic system does not need bright sunlight in order to operate. It can also ...

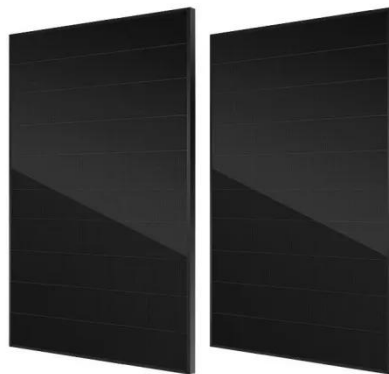
[Get Price](#)

How to connect solar panels together: Series, parallel, combo

Wondering how to connect solar panels together or even how to connect multiple solar panels together? In this

guide, we'll explore three common wiring methods--series, ...

[Get Price](#)



Can photovoltaic panels of different brands be connected in ...

When you connect solar panels in series, the total output current of the solar array is the same as the current passing through a single panel, while the total output voltage is a ...

[Get Price](#)

Solar Panel Series vs Parallel: What's The Difference

Solar panels connected in series form a specific configuration in photovoltaic systems where multiple panels are linked together in a single line or string. In ...



[Get Price](#)

Connecting Solar Panels Together for Increased Power

In this method ALL the solar panels are of the same type and power rating. The total voltage output becomes the sum of the voltage output of each panel. ...

[Get Price](#)


The specific connection method of photovoltaic modules

Photovoltaic power stations cover a large area, use a large amount of DC bus cables, and have a lot of line power loss, and the line voltage drop is seriously inconsistent. In ...

[Get Price](#)


Solar Panel Series & Parallel Calculator

Use our solar panel series and parallel calculator to easily find the wiring configuration that maximizes the power output of your solar panels.

[Get Price](#)


Solar Panel Wiring Basics: Wiring PV Panel In Series ...

Learn solar panel wiring in series and parallel. Optimize your system by understanding voltage, current, and best wiring practices.

[Get Price](#)


TILE ROOF SOLAR MOUNTING SYATEM



STANDING SEAM ROOF SYATEM



ADJUSTABLE TILT FLAT ROOF SYATEM



TRIANGLE FLAT ROOF SYATEM

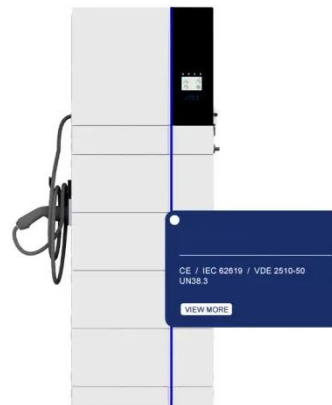
Ultimate Guide to Solar Panels in Series vs. Parallel

There are two options for connecting numerous solar panels in a system: series and parallel. This blog aims to explain why wire solar panels are in series or parallel, compare their ...

[Get Price](#)

The Complete Guide for Solar Panel Connectors

In this guide you'll learn the basics about solar panel connectors, specifications, how to connect them, and which one is the best for you.

[Get Price](#)


How Does a Solar Farm Connect to the Power Grid?

A solar farm, also known as a photovoltaic power station, is a large-scale energy system that converts sunlight into electricity. It consists of

multiple solar panels, also called ...

[Get Price](#)



Solar Panel Series vs Parallel: What's The Difference

Solar panels connected in series form a specific configuration in photovoltaic systems where multiple panels are linked together in a single line or string. In this arrangement, the positive ...

[Get Price](#)



Contact Us

For catalog requests, pricing, or partnerships, please visit:
<https://www.barkingbubbles.co.za>