

SolarInvert Energy Solutions

Can the grid-connected inverter be left lying down



Overview

When do grid tied inverters shut down?

Most grid tied system owners are aware that their grid tied inverters shut down when the grid is down. This is a disturbing situation. When the grid is down is when you need them the most. Sure one could use a portable gen set but what if there is an extended grid outage?

Wouldn't you want your solar system to be available?

.

How does a grid-tied inverter work?

During a grid power outage, a grid-tied inverter seamlessly switches to utilize stored energy or renewable sources like solar panels and wind turbines, securing uninterrupted power supply. It operates independently of the grid, enhancing energy autonomy and preventing backfeeding electricity during emergencies.

Why do inverters need to be disconnected from the grid?

When the grid power is off, the inverter must disconnect from the grid to guarantee safety and prevent backfeeding electricity, which could harm utility workers. The inverter design plays an essential role in enabling this grid disconnection feature, guaranteeing seamless operation during power outages.

Can a grid tied inverter be switched off?

Grid-tied inverters, which are connected to the utility grid, can remain off indefinitely without any concerns. These inverters automatically synchronize with the grid when turned back on and resume normal operation. Can the Inverter be Switched Off When Not in Use?

Yes, inverters can be switched off when not in use.

How do grid-tied inverters work during a power outage?

During a power outage, grid-tied inverters can continue to operate using power from the solar panels. This is made possible through innovative inverter technology that allows the system to function independently of the grid. By leveraging this advancement, you can liberate yourself from the constraints of grid dynamics during outages.

How do I get my inverter to think the grid is up?

The most obvious solution would be to fool the inverters into thinking the grid is up by feeding them a pure sine wave at 220 volts. They would see this sine wave and power back up.problem solved.

Can the grid-connected inverter be left lying down



How To Install A On Grid Solar Inverter?

An on-grid solar inverter plays a vital role in your solar setup. It connects your solar panels to the main power grid.

[Get Price](#)

What Happens to a Grid-Tied Inverter When Grid Power Is Off?

In summary, when the grid power is off, a grid-tied inverter will stop operating to guarantee safety and prevent backfeeding. Anti-islanding protection features are vital in ...

[Get Price](#)



51.2V 150AH, 7.68KWH

What Happens to a Grid-Tied Inverter When Grid ...

In summary, when the grid power is off, a grid-tied inverter will stop operating to guarantee safety and prevent backfeeding. Anti-islanding ...

[Get Price](#)



Can micro inverters be fooled to feed back-up when grid is down?

To have that array dump to the grid, add any common, run of the mill "grid tie inverter" and connect that either to the MPPT's "Dump" terminals, or simply to a knife switch ...

[Get Price](#)



Getting Power From Solar Equipment When the Grid ...

Off-grid systems work just fine when the grid is down, but the vast majority of the roughly 300,000 PV systems in the U.S. are grid-connected ...

[Get Price](#)

Does a SunSynk inverter still provide power when the grid is down

I am planning on getting a Sunsynk Ecco 8kW Hybrid Inverter - if the grid goes down, does the inverter stop providing power to the house? (I have three Pylontech US5000 ...

[Get Price](#)



Grid and Off-Grid Neutrals bonded to same ground

Hi. I'm thinking about changing my current grid-tied system to a Hybrid All-in-one for backup purposes. I have 230v

(European) single phase AC. My question is this: Would it be ...

[Get Price](#)



CAN A GRID CONNECTED INVERTER BE LEFT UNATTENDED?

Do grid connected solar PV inverters increase penetration of solar power? The different solar PV configurations, international/ national standards and grid codes for grid connected solar PV ...

[Get Price](#)



Can I leave my solar inverter on all the time

Solar inverters play a crucial role in your solar energy system, converting solar power into usable electricity for your home. If you're ...

[Get Price](#)

Does a SunSynk inverter still provide power when the grid is ...

If you have batteries connected to it, it will keep you going on battery power. Until the batteries are empty or the power comes back on.

[Get Price](#)


Getting Your Grid Tied Solar Array To Work When ...

Most grid tied system owners are aware that their grid tied inverters shut down when the grid is down, but isn't that when you need it the most? If you have an ...

[Get Price](#)

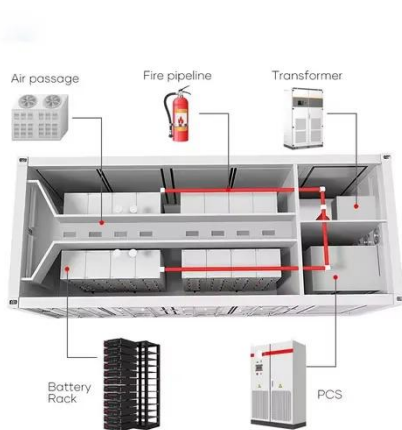
Getting Your Grid Tied Solar Array To Work When The Grid Is Down

Most grid tied system owners are aware that their grid tied inverters shut down when the grid is down, but isn't that when you need it the most? If you have an EV chances ...

[Get Price](#)


Can You Charge a Battery While Using an Inverter?

Can you keep the inverter running or does everything have to stop? It is safe to charge a battery while using an inverter, and it benefits both because



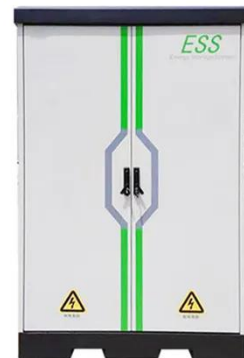
this reduces heat and the amps drawn. If ...

[Get Price](#)

Powering On: The Pros and Cons of Leaving Your Inverter On All ...

An inverter left on continuously can pose a safety risk, particularly in environments with high humidity, water exposure, or explosive gases. The risk of electrical shock, fire, or ...

[Get Price](#)



Does a SunSynk inverter still provide power when the grid is down

If you have batteries connected to it, it will keep you going on battery power. Until the batteries are empty or the power comes back on.

[Get Price](#)

3. Installation

3.2.2. Solar connection Be aware that reverse polarity connection of the solar panel wires can cause damage to the inverter. Connect the solar panel cables to the positive (red) and the ...

[Get Price](#)

Connecting Hybrid Inverters to the Grid: A ...

By following the steps outlined in this blog, you can successfully connect a hybrid inverter to the grid and take advantage of its various ...

[Get Price](#)

Any chance of keeping my solar running if the grid goes down?

I've got a 1 year old Solar install using a 10kw Solar Edge inverter with string inverters and optimizers. I know newer systems can keep running when the power goes out but mine ...

[Get Price](#)

SUPPORT REAL-TIME ONLINE
MONITORING OF SYSTEM STATUS

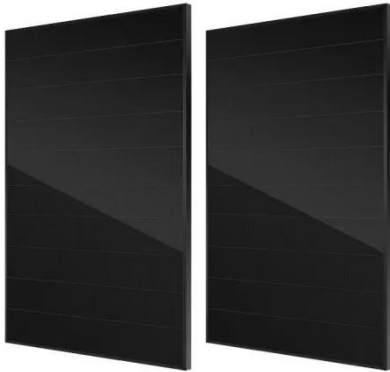


Can I Leave My Inverter On All The Time?

Generally speaking, it is not a good idea to leave your power inverter on all of the time. This is particularly important if you have a limited energy supply in your

batteries and don't have ...

[Get Price](#)



5 Reasons Your Inverter Keeps Shutting Off

An inverter that keeps shutting off is a sign that something is wrong. Diagnose the problem correctly and get your inverter running again.

[Get Price](#)

Our Lifepo4 batteries can be connected in parallel and in series for larger capacity and voltage.



Can the Inverter Be Switched Off When Not in Use?

Grid-tied inverters, which are connected to the utility grid, can remain off indefinitely without any concerns. These inverters automatically ...

[Get Price](#)

Common Issues with Sunny Boy Inverters: A ...

Discover common issues with Sunny Boy inverters in this comprehensive guide for residential solar owners. Learn how to troubleshoot, maintain, and repair ...

[Get Price](#)


Powering On: The Pros and Cons of Leaving Your Inverter On All ...

Additionally, in remote or off-grid locations, leaving the inverter on continuously can provide a reliable source of power when the grid is unavailable. In these cases, the benefits of ...

[Get Price](#)

Can a Grid Tie Inverter be Used Off Grid?

Yes, you can. The grid-connected inverters sold by PowMr can be used off-grid, you can use them as off-grid inverters.

[Get Price](#)


Help me understand running during grid down : r/solar

When the grid goes down, your home gets "disconnected" from the grid and your home runs off a combination of



solar and battery storage. If the sun is out and the batteries aren't fully charged, ...

[Get Price](#)

Help me understand running during grid down : r/solar

When the grid goes down, your home gets "disconnected" from the grid and your home runs off a combination of solar and battery storage. If the sun is out and the batteries ...



[Get Price](#)



Can I Leave My Inverter On All The Time?

Generally speaking, it is not a good idea to leave your power inverter on all of the time. This is particularly important if you have a limited energy supply in your ...

[Get Price](#)

Contact Us

For catalog requests, pricing, or partnerships, please visit:
<https://www.barkingbubbles.co.za>