

## SolarInvert Energy Solutions

# Communication Base Station EMS and Frequency Management



## Overview

---

Why is communication important in EMS?

Communication in EMS is essential. Patients must be able to access the system, the system must be able to dispatch units, EMTs must have a means of communicating with medical direction and receiving facility, and EMTs must be able to communicate vital information to other personnel.

How do I select a EMS base station Radio?

To select a channel on an EMS base station radio, you should set the channel selector on the local primary channel as used in your area. The channel select button must be depressed in order to transmit on the selected frequency.

What frequency does EMS radio communication take place in?

EMS radio communication takes place in the VHF low band, VHF high band, and UHF band. VHF low band is the radio frequencies from 32-50 megahertz (MHz). They are able to follow the shape of the earth allowing communication over long distances. These frequencies are more susceptible to interference from, weather, buildings, and electrical equipment.

What CTCSS tone do EMS med radios use?

For this reason, all New Mexico EMSCOM UHF radios on the EMS MED channels should be using CTCSS tone 136.5. Types of Stations: A base station transmits directly to mobiles and portables. If the base station is at some distance away from the operator, it is known as a remote base station.

What is the purpose of the EMSCOM manual for?

This manual is provided for the use of all services that may have occasion to use the New Mexico Emergency Medical Services Communications (EMSCOM) System. The intended purpose of the manual is to provide a basic understanding of the capabilities and proper utilization of the State EMSCOM system. Maintenance policies are also included.

What are the main functions of the EMSCOM system?

The EMSCOM system's main functions are to provide communications between ambulance/rescue and hospital emergency rooms to allow notification of incoming injured patients to health care facilities.

## Communication Base Station EMS and Frequency Management



### DoD SPECTRUM MANAGEMENT: A CRITICAL ANALYSIS

To establish a frequency management structure that includes a JFMO and to establish procedures to support planned and ongoing operations. The supported CCDR authorizes and ...

[Get Price](#)

### Chapter 5 EMS Communications Flashcards , Quizlet

Study with Quizlet and memorize flashcards containing terms like base station, biotelemetry, cellular telephones and more.

[Get Price](#)



### Communications System Technical Planning Guide

The resultant document is intended to be a simple, practical technical planning guide for Emergency Medical Service (EMS) communications.

[Get Price](#)



### Communications Engineering Services

Med-Channel communications is received at EMRC via one of 24 base station sites or through interfaces with local jurisdiction's 800 MHz systems. EMRC is the central location for ...

[Get Price](#)



## Communications-EMT -- Hopper Institute®

Communication in EMS is essential. Patients must be able to access the system, the system must be able to dispatch units, EMTs must have a means of communicating with medical direction ...

[Get Price](#)

## Guide for the Selection of Communication Equipment for ...

Common radio messages are transmitted over the RF band between 0.05 MHz and 900 MHz. Most public safety communications radios (portable, mobile, base station, and repeaters) ...

[Get Price](#)



## C8: Communications [5/5/03]

Other than a means of voice communication, base station contact over the UHF radio or cellular phone line provides a two fold purpose: It gives ALS



personnel the capability of transmitting an ...

[Get Price](#)

## Chapter 4 Communication and Documentation

allocating specific radio frequencies for use by EMS providers, licensing base stations and assigning appropriate radio call signs for those stations, establishing licensing standards and ...



[Get Price](#)



## EMT: Communication and Documentation Flashcards , Quizlet

A special base station radio that receives messages and signals on one frequency and then automatically retransmits them on a second frequency.

[Get Price](#)

## Microsoft Word

Beyond the immediate communication and coordination of EMS services, it is essential for an ECC to align with the interoperable communications technologies deployed by ...

[Get Price](#)

### **C8: Communications [5/5/03]**

"The use of cellular telephones is permitted provided that the ambulance also has VHF or UHF radio back-up on a frequency assigned by IDPH; and permission of the EMS Resource ...

[Get Price](#)

### **EMT Chapter 4: Communication Flashcards , Quizlet**

Study with Quizlet and memorize flashcards containing terms like Base Station, Cellular Telephone, Channel and more.

[Get Price](#)

### **Effective Communication in EMS Systems: A Comprehensive Guide**

Effective communication is a crucial aspect of Emergency Medical Services (EMS), ensuring the accurate and timely relay of information. This guide

synthesizes multiple perspectives on ...

[Get Price](#)



## EMSCOM

Provide a base station communications back-up for dispatching, direct phone line patching and coordinating EMS information in cases where local base station control fails or is not available.

[Get Price](#)

## Commercial and Industrial ESS

Air Cooling / Liquid Cooling

- Budget Friendly Solution
- Renewable Energy Integration
- Modular Design for Flexible Expansion



## Boston\_EMS\_Policies\_and\_Procedure s.pdf

Basic components of a communications system generally include (1) portable and mobile transceivers; (2) base stations; and (3) central and remote control consoles. Special Features ...

[Get Price](#)

## Chapter 5 (Worksheet) EMT Flashcards , Quizlet

Study with Quizlet and memorize flashcards containing terms like Dispatch, Base Station, Radio Medical Report and more.



[Get Price](#)

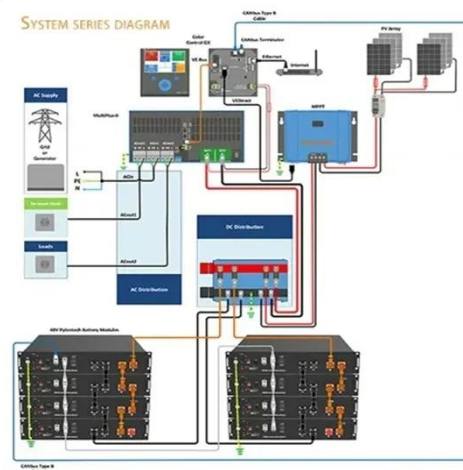

## Boston\_EMS\_Policies\_and\_Procedures.pdf

Point-to-Point communications for coordination of critical transfers, mutual assistance and mass casualty incident management will normally be conducted on VHF radio frequency 155.280 MHz.

[Get Price](#)

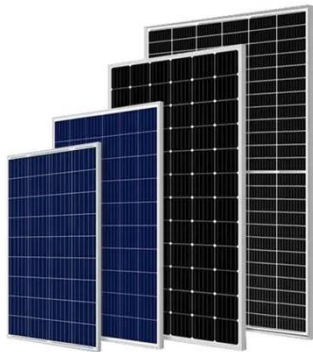
## EMS Chapter 4

A special base station radio that receives messages and signals on one frequency and then automatically retransmits them on a second frequency.

[Get Price](#)


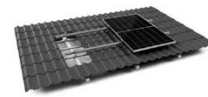
## E74

Effective verbal communication is a daily challenge for EMS providers. Therapeutic communication requires etiquette and special understanding when providing care to a variety ...

[Get Price](#)


## Wisconsin Emergency Medical Services Communication Plan

Concerning EMS communications specifically, the concept of back-up communications as applied to base station or other fixed radio equipment means they must provide the following capabilities:

[Get Price](#)


TILE ROOF SOLAR MOUNTING SYATEM



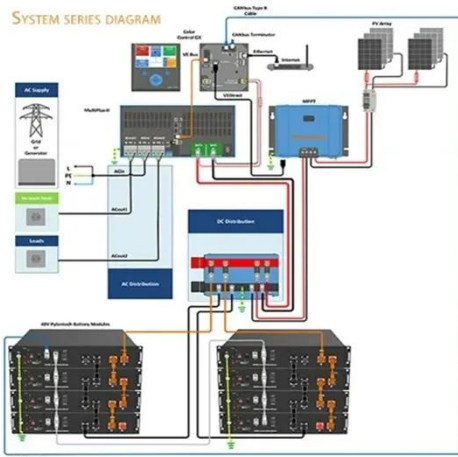
STANDING SEAM ROOF SYATEM



ADJUSTABLE TILT FLAT ROOF SYATEM



TRIANGLE FLAT ROOF SYATEM



## Chapter 5 Flashcards , Quizlet

Study with Quizlet and memorize flashcards containing terms like The initial communication EMTs receive about an emergency call comes from a. the hospital b. the ...

[Get Price](#)

## CHP 15 post test Flashcards , Quizlet

The FCC licenses individual base station operations, assigns radio call signs, approves equipment for use, establishes

limitations for transmitter power output,  
assigns radio ...

[Get Price](#)



## CHAPTER 4 Communications and Documentation

Study with Quizlet and memorize flashcards containing terms like A special base station radio that receives messages and signals on one frequency and then automatically retransmits them on ...

[Get Price](#)

## Statewide EMS Operations & Communications Resource ...

This Emergency Medical Services (EMS) Operations and Communications Resource Manual has been developed by the State of California Emergency Medical Services ...

[Get Price](#)



## Contact Us

For catalog requests, pricing, or partnerships, please visit:  
<https://www.barkingbubbles.co.za>