

## SolarInvert Energy Solutions

# Communication base station current power



## Overview

---

What are the components of a base station?

**Power Supply:** The power source provides the electrical energy to base station elements. It often features auxiliary power supply mechanisms that guarantee operation in case of lost or interrupted electricity, during blackouts. **Baseband Processor:** The baseband processor is responsible for the processing of the digital signals.

How much power does a cellular base station use?

This problem exists particularly among the mobile telephony towers in rural areas, that lack quality grid power supply. A cellular base station can use anywhere from 1 to 5 kW power per hour depending upon the number of transceivers attached to the base station, the age of cell towers, and energy needed for air conditioning.

Why are base stations important in cellular communication?

Base stations are important in the cellular communication as it facilitate seamless communication between mobile devices and the network communication. The demand for efficient data transmission are increased as we are advancing towards new technologies such as 5G and other data intensive applications.

How do cellular base stations work?

Most transceivers in the cellular base stations are run by 48 VDC to charge the batteries and power the communication equipment. The air conditioning of the base station runs at 220 VAC. These base stations can be powered by two types of diesel generators.

How does a base station work?

It usually connects the device to other networks or devices through a dedicated high bandwidth wire or fiber optic connection. Base stations

typically have a transceiver, capable of sending and receiving wireless signals; Otherwise if they only send the trailer it will be considered a transmitter or broadcast point only.

How will cellular base stations affect global power consumption?

A recent study showed that global power consumption for cellular base stations will decline due to more efficient equipment and networks by nearly 3% annually while the cost of electricity powering these base stations will rise by 9% annually.

## Communication base station current power

---



### Communication base station backup battery ...

The cost and performance of lithium batteries continuously improve, the power density makes the consoles significantly smaller and compact. The round trip ...

[Get Price](#)

### Selecting the Right Supplies for Powering 5G Base Stations

These tools simplify the task of selecting the right power management solutions for these devices and, thereby, provide an optimal power solution for 5G base stations components.



[Get Price](#)



### Communication Base Station Energy Solutions

The Importance of Energy Storage Systems for Communication Base Station  
With the expansion of global communication networks, especially the ...

[Get Price](#)

### Types and Applications of Mobile Communication Base Stations

Mobile communication base station is a form of radio station, which refers to a radio transceiver station that transmits information between mobile phone terminals through a ...

[Get Price](#)



## Application of smart power usage on the ...

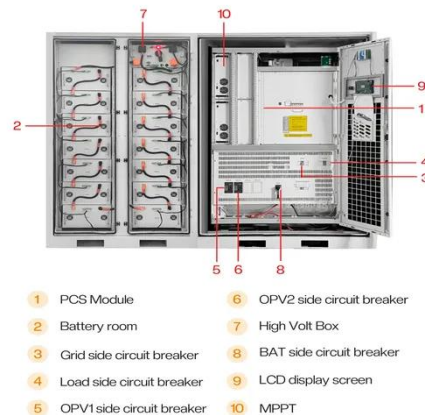
The power parameters of the communication base station can be monitored in real time by installing smart meters, sensors, and other equipment, such as ...

[Get Price](#)

## Solar powered cellular base stations: current scenario, issues and

Cellular base stations powered by renewable energy sources such as solar power have emerged as one of the promising solutions to these issues. This article presents an ...

[Get Price](#)



## Key Factors Affecting Power Consumption in Telecom ...

Discover the key factors influencing power consumption in telecom base stations. Optimize energy efficiency and



reduce operational costs with ...

[Get Price](#)

---

### **Post-earthquake functional state assessment of communication base**

The reliability and resilience of communication base stations are critical to the post-earthquake performance of the communication system, and consequently influence the ...



[Get Price](#)



### **Application of smart power usage on the communication base station**

The power parameters of the communication base station can be monitored in real time by installing smart meters, sensors, and other equipment, such as voltage, current, power, ...

[Get Price](#)

---

### **Optimizing the power supply design for communication base stations**

Comprehensively evaluate various factors and select the most suitable

power system design scheme to ensure the stable and reliable operation of the base station.

[Get Price](#)



### Communication Base Station

The design and implementation of Tian-Power's communication backup solution aims to ensure the normal operation of the communication system in the event of a power outage or power ...

[Get Price](#)

### Communication Base Station

The design and implementation of Tian-Power's communication backup solution aims to ensure the normal operation of the communication system in the event ...

[Get Price](#)



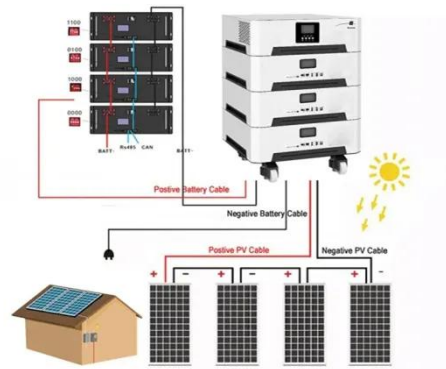
### Lightning and Surge Protection for Communication Station

Install lightning rods, grounding, surge protectors, shielding, and follow standards for effective communication station protection.

[Get Price](#)


## A Device that Controls the Power Supply Sources of a Mobile

One of the most important factors for the effective operation of mobile communication systems is the uninterrupted and stable supply of power to base stations. Uninterrupted power supply to ...


[Get Price](#)


## Optimizing the power supply design for ...

Comprehensively evaluate various factors and select the most suitable power system design scheme to ensure the stable and reliable ...

[Get Price](#)

## How do communication base stations work

Communication base stations, or cell towers, are vital for wireless networks. They consist of antennas, transceivers,



controllers, and power supplies to transmit and receive signals. The ...

[Get Price](#)



### Communication base station power voltage stabilizing circuit ...

The utility model discloses a communication base station power voltage stabilizing circuit having the advantage of high current resistance. The connection point between the input end and the ...

[Get Price](#)

### Why does the communication base station use -48V ...

Because the smallest communications network and communications engineering are in the telephone network, the telecom ...

[Get Price](#)



### Selecting the Right Supplies for Powering 5G Base Stations

These tools simplify the task of selecting the right power management solutions for these devices and, thereby, provide

an optimal power solution for 5G base stations components.

[Get Price](#)



---

## Base Stations

The present-day tele-space is incomplete without the base stations as these constitute an important part of the modern-day scheme of wireless communications. They are ...

[Get Price](#)



---

## Communication Base Station Energy Solutions

Due to harsh climate conditions and the absence of on-site personnel to maintain fuel generators, the company required a reliable solution to ensure the base station's stable operation and ...

[Get Price](#)

---

## Why does the communication base station use -48V power supply?

Because the smallest communications network and communications engineering are in the telephone network, the telecom bureau power

supply voltage are 48V.

[Get Price](#)



### Smart Power of Communication Base Station

Using 5G Internet of things technology, combined with data analysis, to improve the traditional power management level, and to achieve the visible, measurable, controllable, and linkage of ...

[Get Price](#)

### Power Base Station

Base station power refers to the output power level of base stations, which is defined by specific maximum limits (24 dBm for Local Area base stations and 20 dBm for Home base stations) ...

[Get Price](#)



### Optimised configuration of multi-energy systems considering the

However, batteries, as the current communication base station uninterruptible power supply, present a number of disadvantages, such as

difficulty in maintenance, chemical ...

[Get Price](#)



## Simulation Research on Current Distribution Characteristics of ...

Mobile communication base stations are the basic facilities of telecommunication operation networks. When the communication base station is struck by lightning,

[Get Price](#)



## Enhancing Communication Infrastructure with Solar Energy-CDS ...

The communication base station originally relied on a conventional power supply system. It utilized a switch-mode power supply with an output of 54.5V DC and a current ...

[Get Price](#)

## Power Base Station

If an adjacent base station transmission is detected under certain conditions, the maximum allowed Home base station output power is reduced in proportion to

how weak the adjacent ...

[Get Price](#)



### Communication Base Station Energy Solutions

Due to harsh climate conditions and the absence of on-site personnel to maintain fuel generators, the company required a reliable solution to ensure the base ...

[Get Price](#)

### Base Stations

The present-day tele-space is incomplete without the base stations as these constitute an important part of the modern-day scheme of wireless ...

[Get Price](#)



### Key Factors Affecting Power Consumption in Telecom Base Stations

Discover the key factors influencing power consumption in telecom base stations. Optimize energy efficiency and



reduce operational costs with our expert insights.

[Get Price](#)

---

## 5G Mobile Communication Base Station Electromagnetic ...

Abstract. The current national policies and technical requirements related to electromagnetic radiation administration of mobile communication base stations in China are ...

[Get Price](#)



---

## Contact Us

For catalog requests, pricing, or partnerships, please visit:  
<https://www.barkingbubbles.co.za>