

SolarInvert Energy Solutions

Communication base station wind power and signal tower



Overview

Do base station antennas increase wind load?

Base station antennas not only add load to the towers due to their mass, but also in the form of additional dynamic loading caused by the wind. Depending on the aerodynamic efficiency of the antenna, the increased wind load can be significant. Its effects figure prominently in the design of every Andrew base station antenna.

How do base station antennas affect tower load?

It is therefore important for wireless service providers and tower owners to understand the impact that each base station antenna has on the overall tower load. Base station antennas not only add load to the towers due to their mass, but also in the form of additional dynamic loading caused by the wind.

Can wind energy be used to power mobile phone base stations?

Worldwide thousands of base stations provide relaying mobile phone signals. Every off-grid base station has a diesel generator up to 4 kW to provide electricity for the electronic equipment involved. The presentation will give attention to the requirements on using windenergy as an energy source for powering mobile phone base stations.

How can communication towers be energy efficient?

In order to overcome this, our project proposes a comprehensive approach towards an energy efficient operation of communication towers during less traffic (less number of users) by keeping only one mobile tower on working state to take up all communications while the remaining towers stay in idle mode.

Why are base stations important in cellular communication?

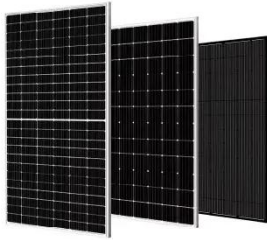
Base stations are important in the cellular communication as it facilitate seamless communication between mobile devices and the network

communication. The demand for efficient data transmission are increased as we are advancing towards new technologies such as 5G and other data intensive applications.

What is a communication tower?

Communication towers, in addition to signal transmission and reception , consumes power for cooling unit that consists of air-conditioner ,cooling fan ,lightning arrester along with a light indicator.

Communication base station wind power and signal tower



What is Telecommunication Base Station , China Hop

The existence of a base station is as important as water and electricity, as the electromagnetic waves it emits wrap around us like air. Quickly and smoothly

...

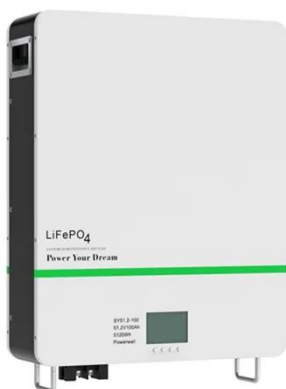
[Get Price](#)

Ane Wind Turbine Solar Generator for Mobile Communication Station Power

ANE company started to supply wind solar hybrid power system for the communication base station in Jinchang, Jiuquan and other districts from 2009. These ...



[Get Price](#)



EFFICIENT POWER UTILIZATION IN COMMUNICATION ...

Power consumption in communication towers is reduced by adapting the network capacity to the actual demand at a given time. The cellular tower working will be based on the peak and off ...

[Get Price](#)

Telecommunication Tower

Reinforced Concrete Foundation

Telecommunication Tower Reinforced Concrete Foundation Telecom (Telecommunications) towers are a generic description of radio masts and towers built primarily to hold ...

[Get Price](#)



Blog -Communication Signal Tower Types & Design, Mobile Base Station

As towers grow taller to support 5G/6G antennas, their natural vibration frequencies align more closely with wind excitation frequencies--triggering resonance that amplifies stress by ...

[Get Price](#)

Base Stations

The present-day tele-space is incomplete without the base stations as these constitute an important part of the modern-day scheme of wireless communications. They are ...

[Get Price](#)



Communication Tower Foundation Selection Criteria

Self-Supporting Towers A self-supporting tower is a free-standing tower with three or four legs connected by a latticework

of braces. Self-supporting towers can either utilize a single ...

[Get Price](#)



Base transceiver station

A base transceiver station (BTS) or a baseband unit[1] (BBU) is a piece of equipment that facilitates wireless communication between user equipment (UE) and a network. UEs are ...

[Get Price](#)



Tower Foundation -- CommStructures

Tower Foundation design Considerations
Tower foundations are critical components of any structure that requires vertical support, such as ...

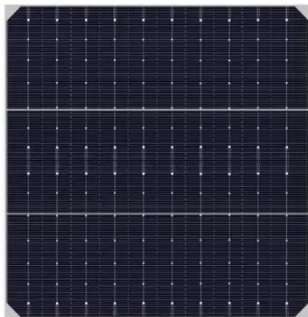
[Get Price](#)

Research on Offshore Wind Power Communication System ...

In view of the special needs of the communication system, a communication system scheme for offshore wind farms based on 5G

technology is proposed.

[Get Price](#)



Breaking Down Base Stations - A Guide to Cellular Sites

Radio frequency power amplifier - Boosts signal strength for outgoing signals. Notably, consumes the majority of a site's power. Combiner ...

[Get Price](#)

Blog -Communication Signal Tower Types & Design,Mobile Base Station

Alttower is a professional manufacturer of telecommunication tower,power tower and tower accessories,we have 23 international patents.accept custom design,ODM/OEM.

[Get Price](#)



How to make wind solar hybrid systems for telecom stations?

Wind solar hybrid systems can fully ensure power supply stability for remote telecom stations. Meet the growing

demand for communication services.

[Get Price](#)



How do communication base stations work

Communication base stations, or cell towers, are vital for wireless networks. They consist of antennas, transceivers, controllers, and power supplies to transmit and receive signals. The ...

[Get Price](#)

Lower cost
larger system

20Kwh
30Kwh



Verified Supplier



Base Stations

The present-day tele-space is incomplete without the base stations as these constitute an important part of the modern-day scheme of wireless ...

[Get Price](#)

Smart BaseStation

Smart BaseStation(TM) is an intelligent communication mast that can provide remote power for a range of DC and AC off-grid applications eg rural broadband.

[Get Price](#)





Blog -Communication Signal Tower Types & Design, Mobile Base ...

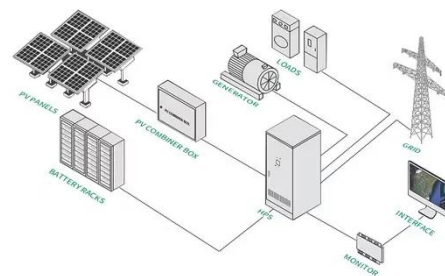
As towers grow taller to support 5G/6G antennas, their natural vibration frequencies align more closely with wind excitation frequencies--triggering resonance that amplifies stress by ...

[Get Price](#)

What is a Base Station?

Figure6: base station communication tower Antennas are used to send and receive signals. It can focus the signal sent from the radio frequency unit in the correct direction and ...

[Get Price](#)



Hybrid Energy Mobile Wireless Telecom Base Station

Discover the power of our Hybrid Energy Mobile Wireless Station, offering seamless, energy-efficient telecom base site solutions. Designed for versatility with solar, wind, and diesel ...

[Get Price](#)

Cell Phone Tower Management and Base Station Safety ...

ABSTRACT In mobile communication base transceiver station plays important role. Each mobile communication base station consist of different units like

power generation and distribution ...

[Get Price](#)



Wind Loading On Base Station Antennas White Paper

Base station antennas not only add load to the towers due to their mass, but also in the form of additional dynamic loading caused by the wind. Depending on the aerodynamic efficiency of ...

[Get Price](#)

Large-scale Outdoor Communication Base Station

Discover the Large-scale Outdoor Communication Base Station, designed for smart cities, communication networks, and power systems. Integrated with ...

[Get Price](#)



Large-scale Outdoor Communication Base Station , Reliable

Discover the Large-scale Outdoor Communication Base Station, designed for smart cities, communication networks, and power systems.

Integrated with solar, wind, and energy storage ...

[Get Price](#)



How to make wind solar hybrid systems for telecom ...

Wind solar hybrid systems can fully ensure power supply stability for remote telecom stations. Meet the growing demand for communication services.

[Get Price](#)



Communication Station Power Supply Wind Turbine ...

A. System introduction The new energy communication base station supply system is mainly used for those small base station situated at remote area ...

[Get Price](#)



Exploiting Wind Turbine-Mounted Base Stations to Enhance ...

We investigate the use of wind turbine-mounted base stations (WTBSs) as a cost-effective solution for regions with high wind energy potential, since it could

replace or even outperform ...

[Get Price](#)



(PDF) Small windturbines for telecom base stations

The presentation will give attention to the requirements on using windenergy as an energy source for powering mobile phone base stations.

[Get Price](#)

Research on Offshore Wind Power Communication System ...

Result After the completion of the 5G communication system based on PTN+ integrated small base station, IP transmission based on optical transmission, supporting ...

[Get Price](#)



Contact Us

For catalog requests, pricing, or partnerships, please visit:
<https://www.barkingbubbles.co.za>