

SolarInvert Energy Solutions

Dimensions of 485w photovoltaic panels

SUPPORT REAL-TIME ONLINE
MONITORING OF SYSTEM STATUS



Overview

What is Longi 485w solar panel?

The Longi 485W Solar Panel (LR5-66HPH 480-505M) is a high-performance solar module based on M10 Gallium-doped wafers, delivering exceptional energy efficiency. It features 9-busbar half-cell technology and advanced smart soldering, ensuring superior power generation even under low light conditions.

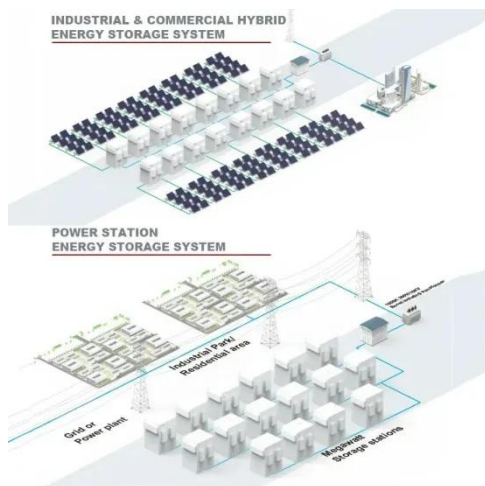
What is a 485 W Q Cells solar panel?

This 485 W Q CELLS solar panel also comes with a generous 10-year product warranty. G10.3 BFG 485W design makes it ideal for residential and commercial rooftops. Strong 1.38" frame made from anodized aluminum increases durability and strength. The model can support a heavy snow load up to 5400 Pa.

What makes Q Cells G10 BFG 485w a good solar panel?

To further boost the performance, Q CELLS employs half-cut cell technology. Each of the panel's 156 cells is only half the size of a traditional solar cell. This grants G10.3 BFG 485W lower resistive losses and better shade tolerance. At 20.9% efficiency, G10.3 BFG 485W offers surprising performance for its weight and size.

Dimensions of 485w photovoltaic panels



485W Solar Panels: Maximizing Power Output for ...

In this guide, we delve into the realm of 485W solar panels, exploring their benefits, technology, installation process, and much more. ...

[Get Price](#)

Aiko Neostar 3S+ 470W N-Type ABC, Gen 3, 54 Cell, ...

New for summer 2025, the third generation of AIKO modules boast even higher efficiency with a larger generating area, and 15-20kW power rating increase ...

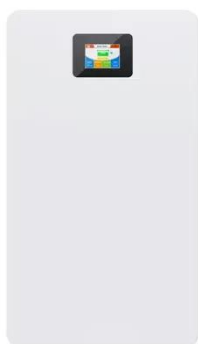
[Get Price](#)



Q CELLS 485W Solar Panel 156 cells Bifacial ...

Each of the panel's 156 cells is only half the size of a traditional solar cell. This grants G10.3 BFG 485W lower resistive losses and better shade tolerance.

[Get Price](#)



485W Solar Panels: Maximizing Power Output for Sustainable

Energy

In this guide, we delve into the realm of 485W solar panels, exploring their benefits, technology, installation process, and much more. 485W solar panels represent the pinnacle of ...

[Get Price](#)



Jinko Solar-Tiger Neo

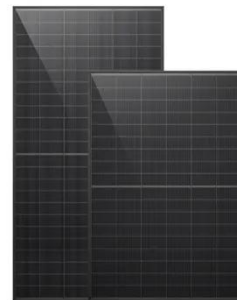
Optimized Temperature Coefficient
-0.29%/°C The temperature coefficient of P-type is -0.35%/°C, Under high temperature condition, Tiger Neo can ...

[Get Price](#)

485W Solar Panel TFL Series

Standard Test Conditions [STC]:
irradiance 1000 W/m²; AM 1.5; ambient temperature 25°C according to EN 60904-3; 2. Nominal Module Operating Temperature (NMOT): Irradiance ...

[Get Price](#)



485W Solar Panel TFL Series

Standard Test Conditions [STC]:
irradiance 1000 W/m²; AM 1.5; ambient temperature 25°C according to EN 60904-3; 2. Nominal Module Operating ...



[Get Price](#)

Longi 485W Mono 54-Cell Black Frame Solar Panel - High ...

The Longi LR7-54HVH-485M 485W Mono Solar Panel delivers high performance with advanced monocrystalline PERC technology, ensuring superior efficiency and reliability. Designed with a ...

[Get Price](#)

LFP12V100



LonGi 485W Solar Panel (LR5-66HPH, 480-505 Watt) - TSolar

The LonGi 485W Solar Panel (LR5-66HPH 480-505M) is a high-performance solar module based on M10 Gallium-doped wafers, delivering exceptional energy efficiency. It features 9-busbar ...

[Get Price](#)

Jinko 485W Monofacial Solar Panel (485N-60HL4-V)

Jinko 485W Monofacial Solar Panel (485N-60HL4-V) High Efficiency for Maximum Energy Yield: Benefit from the ultra-high efficiency of Jinko Solar Panels, ensuring optimal energy production ...

[Get Price](#)



Q CELLS 485W Solar Panel 156 cells Bifacial Q.PEAK DUO XL ...

Each of the panel's 156 cells is only half the size of a traditional solar cell. This grants G10.3 BFG 485W lower resistive losses and better shade tolerance. At



20.9% ...

[Get Price](#)

**Efficient
Higher Revenue**

**Intelligent
Simple O&M**

**Flexible
Abundant Configuration**

- Max. Efficiency 97.5%
- Max. PV Input Voltage 600V
- 150% Peak Output Power
- 2 MPPT Trackers, 150% DC Input Overvoltage
- Max. PV Input Current 16A, Compatible with High-Power Modules
- IP66 Protection Degree: support outdoor installation
- Smart I-V Curve Diagnosis Function: locate PV string faults accurately and automatically detect faults
- DC & AC Type II SPD: prevent lightning damage
- Battery Reverse Connection Protection
- Plug & Play, EPS Switching Under 10ms
- Compatible with Lead-Acid and Lithium Batteries
- Max. 6 units Inverters Parallel
- AFCC Function (Optional): when an arc fault is detected the inverter immediately stops operation

SPR-P3-485-UPP 485W Solar Panel Information

SPR-P3-485-UPP Solar Panel Information
(TCL SunPower Global) 485W TCL
SunPower Global Panel (SPR-P3-485-UPP)
See the table below for available
information we have about TCL ...


[Get Price](#)


485 Watt Solar panels for sale , Prices, dimensions, weight, ...

Region: China Features: High efficiency
(high output) / High Power (High
wattage) / Low Light Irradiance / Low PID
/ Monocrystalline / Severe Weather
Resistant Panel Dimension: ...

[Get Price](#)

AIKO Launches Infinite Series ABC Gen 3 Panels in Australia

3 days ago· AIKO's new Infinite Series
ABC Gen 3 panels deliver higher
efficiency, durability, and sleek
aesthetics, setting a new benchmark for

Australian solar projects with proven shading ...

[Get Price](#)



SEG Solar 485W 120 Half Cell 1500V N-Type Silver ...

Greentech Renewables supplies SEG Solar 485W 120 Half Cell 1500V N-Type Silver Bifacial Solar Panel, SEG-485-BTB-BG and other pre-qualified solar ...

[Get Price](#)

485W Photovoltaic Panel Specifications and Dimensions: The ...

Why 485W Solar Panels Are Redefining Industry Standards Ever wondered how modern solar panels balance power output with space efficiency? The 485W photovoltaic panel has become ...

[Get Price](#)



Canadian_Solar-Datasheet

CANADIAN SOLAR (USA), INC. is committed to providing high quality solar products, solar system solutions and services to customers around the world.

Canadian Solar was recognized ...

[Get Price](#)



LonGi 485W Solar Panel (LR5-66HPH, 480-505 Watt) ...

The LonGi 485W Solar Panel (LR5-66HPH 480-505M) is a high-performance solar module based on M10 Gallium-doped wafers, delivering exceptional ...

[Get Price](#)



 Efficient Higher Revenue

 Intelligent Simple O&M

 Flexible Abundant Configuration

- Max. Efficiency 97.5%
- Max. PV Input Voltage 600V
- 150% Peak Output Power
- 2 MPPT Trackers, 150% DC Input Overvoltage
- Max. PV Input Current 15A, Compatible with High Power Modules
- IP65 Protection Degree: support outdoor installation
- Smart I-V Curve Diagnosis Function: locate PV string faults accurately and automatically detect faults
- DC & AC Type II SPD: prevent lightning damage
- Battery Reverse Connection Protection
- Plug & Play, EPS Switching Under 10ms
- Compatible with Lead-acid and Lithium Batteries
- Max. 6 units Inverters Parallel
- AFCI Function (Optional): when an arc fault is detected the inverter immediately stops operation

485 Watt Solar panels for sale , Prices, dimensions, weight, ...

485 Watt Solar panels' range of prices, dimensions, sizes, voltage output, specifications datasheets Ranges of information Voltage: 27.6V ~ 53.1V Amp: 9.13A ~ 17.58A

[Get Price](#)

485W Photovoltaic Panel Specifications and Dimensions: The ...

Key Technical Specifications Breakdown
Power Output: 485W $\pm 3\%$ tolerance
Dimensions: 1765×1048×35mm

(69.5"×41.3"×1.4") Cell Type:
Monocrystalline PERC (Passivated
Emitter ...

[Get Price](#)



Longi HiMO X10 HPBC 2.0 650W 645W 640W Solar ...

The Longi HiMO X10 HPBC 2.0 series offers outstanding 650W, 645W, and 640W power outputs. Utilizing advanced HPBC 2.0 mono-facial technology, ...

[Get Price](#)

Contact Us

For catalog requests, pricing, or partnerships, please visit:
<https://www.barkingbubbles.co.za>