

## SolarInvert Energy Solutions

# Distance between energy storage equipment and buildings



## Overview

---

What is the battery energy storage system guidebook?

NYSERDA published the Battery Energy Storage System Guidebook, most-recently updated in December 2020, which contains information and step-by-step instructions to support local governments in New York in managing the development of residential, commercial, and utility-scale BESS in their communities.

How far should ESS units be separated from each other?

In Section 15.5 of NFPA 855, we learn that individual ESS units shall be separated from each other by a minimum of three feet, unless smaller separation distances are documented to be adequate and approved by the authority having jurisdiction (AHJ) based on large-scale fire testing.

How much energy can a ESS unit store?

Individual ESS units shall have a maximum stored energy of 20 kWh per NFPA Section 15.7. NFPA 855 clearly tells us each unit can be up to 20 kWh, but how much overall storage can you put in your installation?

That depends on where you put it and is defined in Section 15.7.1 of NFPA 855.

How far apart should storage units be positioned?

Therefore, if you install multiple storage units, you have to space them three feet apart unless the manufacturer has already done large-scale fire testing and can prove closer spacing will not cause fire to propagate between adjacent units.

What are the energy storage operational safety guidelines?

In addition to NYSERDA's BESS Guidebook, ESA issued the U.S. Energy Storage Operational Safety Guidelines in December 2019 to provide the BESS industry

with a guide to current codes and standards applicable to BESS and provide additional guidelines to plan for and mitigate potential operational hazards.

Are battery energy storage systems the future of grid stability?

Battery Energy Storage Systems represent the future of grid stability and energy efficiency. However, their successful implementation depends on the careful planning of key site requirements, such as regulatory compliance, fire safety, environmental impact, and system integration.

## Distance between energy storage equipment and buildings

---



### Energy Storage Systems - UL 9540A

These limitations specifically focus on indoor installations in non-dedicated buildings and outdoor installations less than 100 feet from exposures: The maximum stored energy per ...

[Get Price](#)

### 2021 International Fire Code (IFC)

An automatic sprinkler system is now required for open parking garages exceeding a certain fire area threshold. The requirements for energy storage system (ESS) were further refined to ...



[Get Price](#)



### Code Corner: NFPA 855 ESS Unit Spacing Limitations -- ...

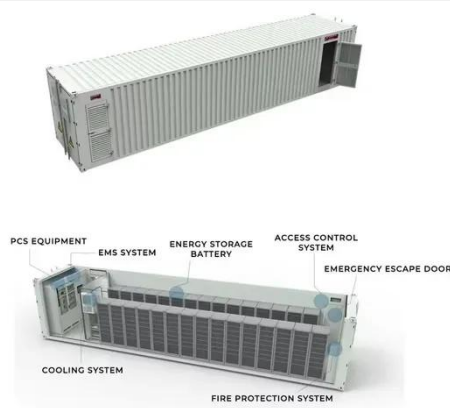
In Section 15.5 of NFPA 855, we learn that individual ESS units shall be separated from each other by a minimum of three feet unless smaller separation distances are ...

[Get Price](#)

### What are the Essential Site Requirements for Battery Energy ...

Learn about site selection, grid interconnection, permitting, environmental considerations, safety protocols, and optimal design for energy efficiency. Ideal for developers ...

[Get Price](#)



## DS 5-33 Lithium-Ion Battery Energy Storage Systems (Data ...

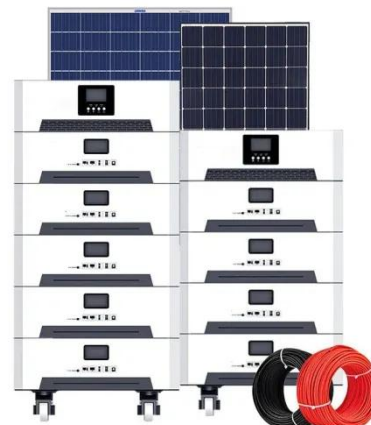
Energy storage systems can be located in outside enclosures, dedicated buildings or in cutoff rooms within buildings. Energy storage systems can include some or all of the following ...

[Get Price](#)

## IS 8091 (2008): Industrial plant layout

5.2.4 The type of retardant required in relation to the horizontal distance between building of frame, brick and fire-resistant construction, and minimum separation distances between ...

[Get Price](#)

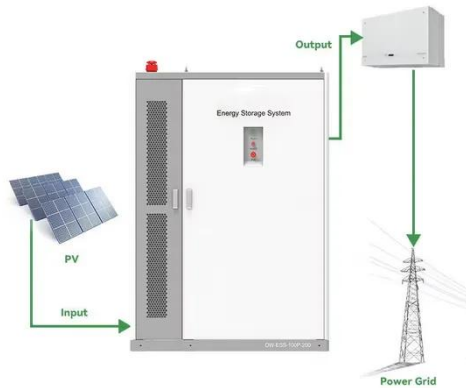


## The Essential Guide to Energy Storage Building Distance: Safety

The concept of energy storage building distance is more than real estate logistics--it's a cocktail of safety protocols, fire risks, and even zombie-

apocalypse-level ...

[Get Price](#)



## Best Practices and Considerations for Siting Battery Storage ...

o Depending on the size of the battery and needs of the site, it is important to determine early on if the battery will be sited in the facility or outside of it. o This decision may be impacted by any ...

[Get Price](#)



## GRADE A BATTERY

LiFePO4 battery will not burn when overcharged, over discharged, overcurrent or short circuited and can withstand high temperatures without decomposition.



## Requirements for the distance between energy storage power ...

The article first introduces the concept of industrial and commercial energy storage and energy storage power stations, outlining their respective roles in energy storage, management, and ...

[Get Price](#)

## fcode\_us

Protected Tank, less than 6,000 gallons:  
15' from property line 5' from building or public way 3' between each tank  
Protected Tank, more than 6,000 gallons: 25' from property line 25' from



...

[Get Price](#)



- LiFePO<sub>4</sub> Battery,safety
- Wide temperature: -20~55°C
- Modular design, easy to expand
- The heating function is optional
- Intelligent BMS
- Cycle Life: > 6000
- Warranty: 10 years



## How many meters are the distances between energy ...

Distances between energy storage stations range widely based on various factors, typically falling between 100 to 500 meters, local regulations, ...

[Get Price](#)

## What building owners need to know about EV charging

With proper planning, smart buildings can offer a smart, energy efficient amenity that saves money and supports employees and visitors.

[Get Price](#)



## Siting and Safety Best Practices for Battery Energy Storage ...

NYSERDA published the Battery Energy Storage System Guidebook, most-recently updated in December 2020, which contains information and step-by-

step instructions to support local ...

[Get Price](#)

Our Lifepo4 batteries can be connected in parallels and in series for larger capacity and voltage.



## Site Requirements for Utility-Scale Energy Storage System ...

For safety purposes, the distance between the ESS and residential buildings must be no less than 12 m, and the distance between the ESS and densely populated buildings such as schools ...



[Get Price](#)



## IX.10 Risk-Informed Separation Distances for H Facilities

Results Comparison of the separation distances generated in the ISO and NFPA analysis is not possible due to the differences in the scope of the application (i.e., bulk storage versus fuelling ...

[Get Price](#)

## Chapter 10 Section 7

5.5.1 Any equipment that emits electrical energy, such as radio transmitters (including emergency



services radios likely to be used in the vicinity of explosives, microwave links, portable ...

[Get Price](#)



### **How many meters are the distances between energy storage ...**

Distances between energy storage stations range widely based on various factors, typically falling between 100 to 500 meters, local regulations, geographical considerations, and ...

[Get Price](#)

### **Essential Safety Distances for Large-Scale Energy Storage Power**

Discover the key safety distance requirements for large-scale energy storage power stations. Learn about safe layouts, fire protection measures, and optimal equipment ...

[Get Price](#)



### **3ft between energy storage system , Information by ...**

AHJ is not convinced that ESS system marked for use in residential dwelling units are exempt from R327.3 ( CALIORNIA ...

[Get Price](#)


### What are the Essential Site Requirements for Battery Energy Storage

Learn about site selection, grid interconnection, permitting, environmental considerations, safety protocols, and optimal design for energy efficiency. Ideal for developers ...


[Get Price](#)

### Comprehensive review of energy storage systems technologies, ...



The applications of energy storage systems have been reviewed in the last section of this paper including general applications, energy utility applications, renewable energy ...

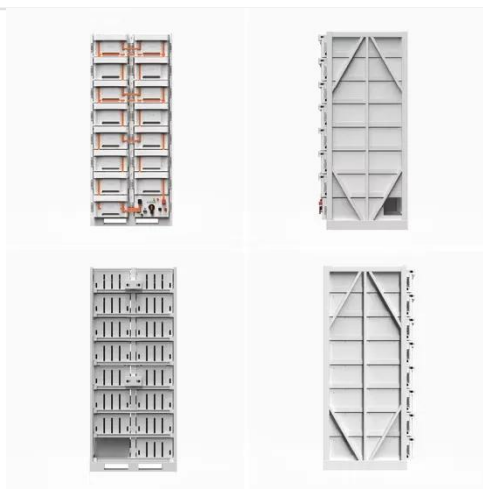
[Get Price](#)

### 2306.2.3 Above-ground tanks located outdoors, above grade.

An automatic sprinkler system is now required for open parking garages exceeding a certain fire area threshold.

The requirements for energy storage system (ESS) were further refined to ...

[Get Price](#)



### To BESS, or Not to BESS? The Emergence of Battery ...

On Long Island, communities from Hempstead to Southold are witnessing the introduction of a previously unfamiliar form of Green-adjacent ...

[Get Price](#)

### Separation Distance

The minimum acceptable distance that must separate storage tanks from property lines, nearby buildings and other tanks. Fire codes require that both underground and aboveground tanks ...

[Get Price](#)

PUSUNG-R (Fit for 19 inch cabinet)



### Energy Storage System Permitting and Interconnection ...

Description of access to energy storage system equipment and clearly defined and maintained means of egress as required by code (both Fire and Building

Codes' Chapter 10, as applicable).

[Get Price](#)



---

## Contact Us

For catalog requests, pricing, or partnerships, please visit:  
<https://www.barkingbubbles.co.za>