

SolarInvert Energy Solutions

**Do you need to install a
communication base station
battery**



Overview

Which battery is best for a telecom base station?

REVOV's lithium iron phosphate (LiFePO₄) batteries are ideal telecom base station batteries. These batteries offer reliable, cost-effective backup power for communication networks. They are significantly more efficient and last longer than lead-acid batteries.

What makes a telecom battery pack compatible with a base station?

Compatibility and Installation Voltage Compatibility: 48V is the standard voltage for telecom base stations, so the battery pack's output voltage must align with base station equipment requirements. Modular Design: A modular structure simplifies installation, maintenance, and scalability.

How do you protect a telecom base station?

Backup power systems in telecom base stations often operate for extended periods, making thermal management critical. Key suggestions include:
Cooling System: Install fans or heat sinks inside the battery pack to ensure efficient heat dissipation.

Why should you use a battery for a communication network?

These batteries offer reliable, cost-effective backup power for communication networks. They are significantly more efficient and last longer than lead-acid batteries. At the same time, they're lighter and more compact, and have a modular design – an advantage for communication stations that need to install equipment in limited space.

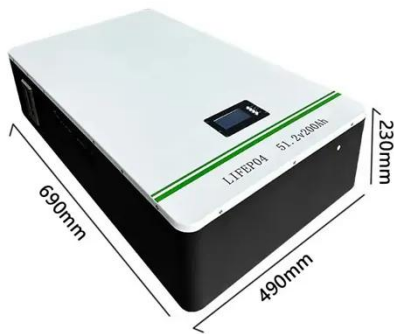
Do I need a base station?

Yes, you do need a pair of base stations to get positional tracking of the headset, even if your just seated in front of your desk. Originally posted by SCSI-Terminator: Yes, you do need a pair of base stations to get positional tracking of the headset, even if your just seated in front of your desk.

Why is backup power important in a 5G base station?

With the rapid expansion of 5G networks and the continuous upgrade of global communication infrastructure, the reliability and stability of telecom base stations have become critical. As the core nodes of communication networks, the performance of a base station's backup power system directly impacts network continuity and service quality.

Do you need to install a communication base station battery



Telecom battery backup systems

Telecom battery backup systems mainly refer to communication energy storage products used for backup power supply of communication ...

[Get Price](#)

Telecom Base Station Backup Power Solution: Design Guide for ...

Designing a 48V 100Ah LiFePO4 battery pack for telecom base stations requires careful consideration of electrical performance, thermal management, safety protections, and ...

[Get Price](#)



What are base station energy storage batteries used for?

Another crucial aspect of base station energy storage batteries is their role in stabilizing energy supply and demand. Telecommunications ...

[Get Price](#)



What Are the Critical Aspects of Telecom Base Station Backup ...

Telecom base station backup batteries are essential for ensuring uninterrupted communication by providing reliable, long-lasting power during outages. Critical aspects ...

[Get Price](#)



Installation and hardware , Base Help Center

What does a typical Base system installation look like? How does the Base system interact with the generator interlock on the main panel? How do I connect my battery to my home WiFi ...

[Get Price](#)

Grounding

After antennas, station grounding is probably the most discussed subject in amateur radio and it is also the one replete with the most misconceptions. The first thing to know is that there are ...

[Get Price](#)



Do Arlo Essential Cameras Need a Base Station? Unraveling the ...

In this comprehensive article, we will explore the mechanics of Arlo Essential Cameras, discuss the significance of base stations, and provide insights into



whether ...

[Get Price](#)

Selection and maintenance of battery for communication base station

Focused on the engineering applications of batteries in the communication stations, this paper introduces the selections, installations and maintenances of batteries for communication ...

[Get Price](#)



Ham Radio Mobile Installation -- Going Mobile (Part 1)

Going mobile. Yeah, that's a great idea! Installing a ham radio mobile station in an automobile is often the next step for many hams following the establishment of ...

[Get Price](#)

Anyone ever run a base station off grid?

The amount of run time off the battery will depend on how big a battery you

purchase. You can buy just the stand alone battery revert modules if you shop around. You ...

[Get Price](#)



How to set up a ham radio base station?

A ham radio base station is a vital part of any radio amateur's setup, serving as a central hub for communication, experimentation, and community engagement. In this article, we'll take you ...

[Get Price](#)

Area of Refuge/Two-Way Communication System Mounting ...

Base Station Mounting RATH® recommends mounting the Base Station 60" from the floor to the center of the unit.

[Get Price](#)



Selection and maintenance of battery for communication base ...

Focused on the engineering applications of batteries in the communication stations, this paper introduces the



selections, installations and maintenances of batteries for communication ...

[Get Price](#)

Equipment for Your Ham Radio Station

Battery backup: In case of power outages or when operating in remote locations, having battery backup for your ham radio station can be invaluable. In ...

[Get Price](#)



Use of Batteries in the Telecommunications Industry

The Alliance for Telecommunications Industry Solutions is an organization that develops standards and solutions for the ICT (Information and Communications Technology) industry.

[Get Price](#)

UPS Batteries in Telecom Base Stations - leagend

In today's always-connected world, telecom base stations are the backbone of communication networks, ensuring seamless connectivity for ...

[Get Price](#)


Selection and maintenance of batteries for communication base stations

As an important part of the power supply system of communication base stations, batteries play a vital role in the construction of communication base station power supply systems.

[Get Price](#)

Installation and hardware , Base Help Center

How do I connect my battery to my home WiFi network? This article will help you connect your battery to your WiFi. It will also help you troubleshoot internet connectivity issues.

[Get Price](#)

☒ IP65/IP55 OUTDOOR CABINET

☒ ALUMINUM

☒ OUTDOOR ENERGY STORAGE CABINET

☒ OUTDOOR MODULE CABINET

Understanding Backup Battery Requirements for ...

Telecom base stations require reliable backup power to ensure uninterrupted communication services. Selecting the

right backup battery is ...

[Get Price](#)



What are base station energy storage batteries used for?

Another crucial aspect of base station energy storage batteries is their role in stabilizing energy supply and demand. Telecommunications networks require a consistently ...

[Get Price](#)



Base Station Batteries

A telecommunication base station (TBS) depends on a reliable, stable power supply. For this reason, base stations are best served by lithium batteries that use newer technology - in ...

[Get Price](#)



Telecom Base Station Backup Power Solution: Design ...

Designing a 48V 100Ah LiFePO4 battery pack for telecom base stations requires careful consideration of electrical performance, thermal ...

[Get Price](#)


Understanding Backup Battery Requirements for Telecom Base Stations

Telecom base stations require reliable backup power to ensure uninterrupted communication services. Selecting the right backup battery is crucial for network stability and ...

[Get Price](#)

Selection and maintenance of batteries for communication base ...

As an important part of the power supply system of communication base stations, batteries play a vital role in the construction of communication base station power supply systems.

[Get Price](#)


TELECOM BACKUP POWER SYSTEMS

Lithium-ion batteries will gradually become the first choice for high-end backup power solutions. CellWatt base station lithium battery module is widely



used in communication base stations ...

[Get Price](#)

UPS Batteries in Telecom Base Stations - leagend

In today's always-connected world, telecom base stations are the backbone of communication networks, ensuring seamless connectivity for mobile phones, data services, ...

[Get Price](#)



Solar Panel



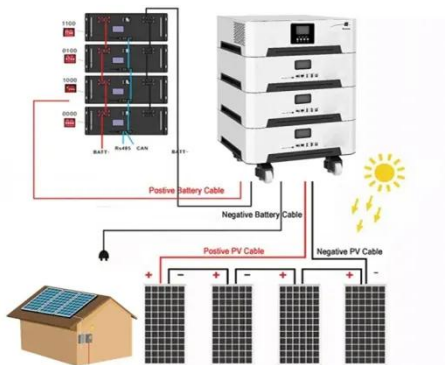
PV Combiner Box



Lithium Battery



Hybrid Inverter



HAM Radio Set Up Guide - Easiest Way for Beginners

To use mobile ham radio, you need a mobile transceiver and a mobile antenna that you can install in your car. The mobile antenna will give a boost to your ...

[Get Price](#)

Telecom Base Station Battery Solutions: What You Need To Know

Before you buy telecom batteries, it's important to find the right battery for your base station. It's important to have a battery that matches the ampere-hour

rating of your ...

[Get Price](#)



Verve Home Phone Base User Guide V2.6 Web

INSTALL THE BATTERY With the bottom facing up, sandwich the Verve Home Phone Base between your hands. Slide your top hand down to remove the back cover.

[Get Price](#)

Contact Us

For catalog requests, pricing, or partnerships, please visit:
<https://www.barkingbubbles.co.za>