

SolarInvert Energy Solutions

Does the base station require AC power



Overview

Yes, with a proper 12V DC power supply (3-5 amps minimum) and base antenna system. However, dedicated base stations typically offer better features, ergonomics, and performance for home use. Typical range is 15-25 miles for local communications. Do base stations need a power supply?

Power Requirements: Base stations operate on 120V AC power rather than 12V DC, requiring either built-in power supplies or separate AC-to-DC converters. **Size and Ergonomics:** Designed for desktop use, these radios feature full-size controls, making operation more comfortable during extended sessions.

How do I install a base station CB system?

Base Station CB systems are not complicated to install, but there are a few things you should know. So, let's get into it. First, you need a radio system that works off of AC power. Most CB radios are designed for vehicles that are powered by DC 12-volt power systems.

Do base station transceivers need a power supply?

Most base station transceivers require an external AC power supply, providing a stable source of 12-14 VDC. Choose a power supply with a sufficient amperage rating to support your transceiver and any additional equipment, such as amplifiers. For mobile or emergency situations, consider using batteries or solar power as alternatives.

Are base station CB systems complicated to install?

Base Station CB systems are not complicated to install, but there are a few things you should know. Get the down-and-dirty at Right Channel Radios. Free Shipping \$75+ and killer customer service.

Can I use a mobile CB radio with a power supply?

To save on cost, you can use any mobile CB radio in your base station setup if

you add a power supply to your system. A 5-amp power supply works great for powering a 12-volt CB radio. You can pair this power supply with any mobile CB radio, including popular models such as the Cobra 29 LTD, President McKinley SSB, and the Galaxy 959 SSB.

What is the difference between a base station and a mobile transceiver?

Mobile transceivers are designed for use in vehicles, while base station transceivers are meant for stationary use at your ham radio shack. Your transceiver will need a reliable power source. Most base station transceivers require an external AC power supply, providing a stable source of 12-14 VDC.

Does the base station require AC power



Why don't base stations come with built-in power supplies? : r

But why aren't there any base stations with built-in power supplies? It just adds an additional hassle to buying a base station, and takes up more room. Not to mention that it adds to the ...

[Get Price](#)

7 Portable vs Base Station Ham Radio Setups That ...

Discover the key differences between portable and base station ham radio setups - from power needs and antenna options to cost ...

[Get Price](#)



why don't they make radios that are AC-powered?

I'm trying to figure out how I want to design & build my future base station. I like a minimalist approach, but it seems there's no avoiding a lot of wires and equipment just to power the ...

[Get Price](#)

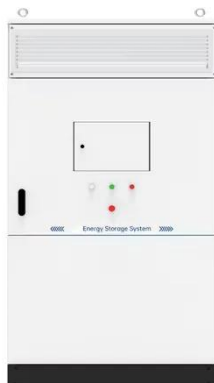
Base station operation guidelines

Base station operation guidelines This topic introduces the concept of base station operation, provides information to help you identify good setup locations, describes best practices for ...

[Get Price](#)



- ☒ IP65/IP55 OUTDOOR CABINET
- ☒ OUTDOOR CABINET WITH AIR CONDITIONER
- ☒ OUTDOOR ENERGY STORAGE CABINET
- ☒ 19 INCH



Stupid question

So my question is simple: Why don't they make AC-powered radios, especially base stations? They must know they are going to be used in a household setting 95% of the time, where the ...

[Get Price](#)

The Best Portable Power Stations of 2025

Portable power stations have forever squashed the notion of roughing it while camping, road-tripping, beach bumming, and otherwise ...

[Get Price](#)



why don't they make radios that are AC-powered?

I'm trying to figure out how I want to design & build my future base station. I like a minimalist approach, but it seems there's no avoiding a lot of wires and

equipment just to ...

[Get Price](#)



Cooling for Mobile Base Stations and Cell Towers

Background Unattended base stations require an intelligent cooling system because of the strain they are exposed to. The sensitive telecom equipment is operating 24/7 with continuous load ...

[Get Price](#)



How to Set Up a Base Station CB System

Base Station CB systems are not complicated to install, but there are a few things you should know. So, let's get into it. First, you need a radio system that works off of AC ...

[Get Price](#)



How to Set Up a Base Station CB System: A Complete ...

Power Requirements: Base stations operate on 120V AC power rather than 12V DC, requiring either built-in power supplies or separate AC-to-DC

converters. Size and ...

[Get Price](#)



Setting Up Your Ham Radio Station: A Step-by-Step Guide for ...

Most base station transceivers require an external AC power supply, providing a stable source of 12-14 VDC. Choose a power supply with a sufficient amperage rating to support your ...

[Get Price](#)

DECT IP Base Station W70B

If you choose method a, use Yealink supplied power adapter (5V/0.6A). A third-party power adapter may damage the base station. If you choose method b, you do not need to connect ...

[Get Price](#)



Setting Up Your Ham Radio Station: A Step-by-Step Guide for ...

Base Station CB systems are not complicated to install, but there are a few things you should know. So, let's get into it. First, you need a radio system



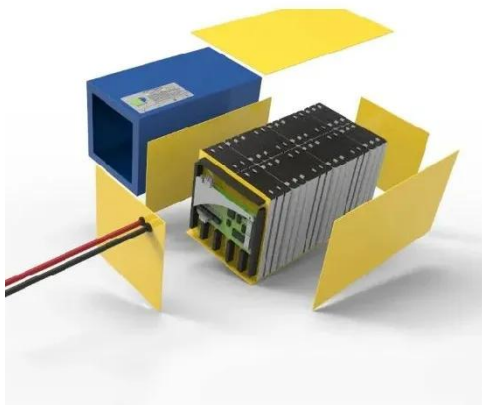
that works off of AC ...

[Get Price](#)

Setting Up a Base Station CB Radio for Long Range ...

Power Supply: Base station CB radios require an external power source, typically 120V AC, or a suitable power adapter, unlike mobile units that rely on vehicle batteries.

[Get Price](#)



Do modern radios and power supplies require ...

Do modern radios require grounding to be used safely? All I am concerned about is not getting electrocuted when I attempt to use the radio. ...

[Get Price](#)

The Complete Guide to Powering Your AC Unit: Avoid ...

As summer temperatures soar, your air conditioner becomes your lifeline to comfort. But before you flip the switch on your cooling system, ...

[Get Price](#)


ADT Smart Home Security

The ADT Base will require AC power, so an outlet should be available within 5 feet. The outlet must not be controlled by a switch and must provide continuous power. The ADT ...

[Get Price](#)

How to Set Up a Base Station CB System: A ...

Power Requirements: Base stations operate on 120V AC power rather than 12V DC, requiring either built-in power supplies or separate AC-to ...

[Get Price](#)


Mobile as base station--How do I power this thing? : r/gmrs

Don't worry too much about how much the power supply can give, it's the draw that matters; the midland won't draw more than a power supply can handle



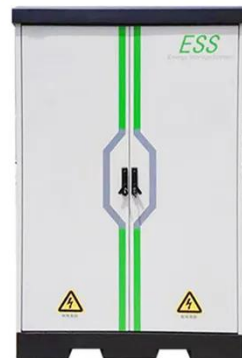
unless maybe it's a ...

[Get Price](#)

Why don't base stations come with built-in power supplies? : r

But why aren't there any base stations with built-in power supplies? It just adds an additional hassle to buying a base station, and takes up more room. Not to mention that it ...

[Get Price](#)



Power Adapter Answers : r/Vive

Bottom line - if you're buying an "AC adapter" that meets the criteria needed for the device (base station or link box) then you should be good. If you're really concerned, then just ...

[Get Price](#)

Power Base Station

Base station power refers to the output power level of base stations, which is defined by specific maximum limits (24 dBm for Local Area base stations and 20 dBm for Home base stations) ...

[Get Price](#)

☒ LIQUID/AIR COOLING

☒ ON GRID/HYBRID

☒ PROTECTION IP54/IP55

☒ BATTERY /6000 CYCLES

DC Power, AC Power, and How Not to Blow Your Shit ...

Let's say you are running a radio that draws 6 amps. That radio's basic DC power requirement is 83 watts. It will be operated at 13.8 volts and drawing 6 amps ...

[Get Price](#)

Essential Guide: Do You Need a Base Station for Ring Cameras?

Direct Connectivity: Ring cameras connect directly to your Wi-Fi, allowing you to receive alerts, view live footage, and communicate through the app without the need for a ...

[Get Price](#)


Power Adapter Answers : r/Vive

Bottom line - if you're buying an "AC adapter" that meets the criteria needed for the device (base station or link box) then you should be good. If you're really concerned, then just don't buy that ...

GRADE A BATTERY

LiFePO4 battery will not burn when overcharged, over discharged, overcurrent or short circuited and can withstand high temperatures without decomposition.


[Get Price](#)

Setting Up Your Ring Alarm Base Station

How does battery backup work? When your Ring Alarm loses power, the internal rechargeable battery will keep your Ring Alarm Base Station online for up to ...

[Get Price](#)


DC Power, AC Power, and How Not to Blow Your Shit Up for ...

Let's say you are running a radio that draws 6 amps. That radio's basic DC power requirement is 83 watts. It will be operated at 13.8 volts and drawing 6 amps at maximum power. Will a 6 amp ...

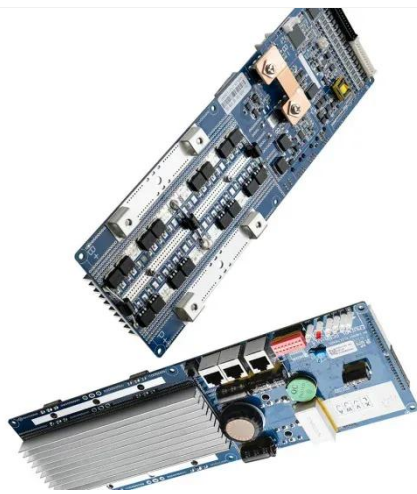
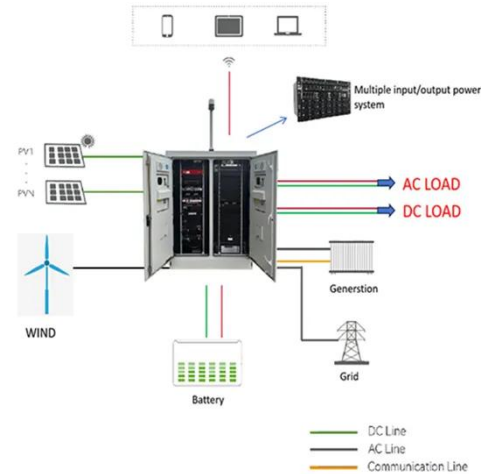
[Get Price](#)

Measurements and Modelling of Base Station Power Consumption under Real

Abstract Base stations represent the main contributor to the energy

consumption of a mobile cellular network. Since traffic load in mobile networks significantly varies during a working or ...

[Get Price](#)



Mobile as base station--How do I power this thing? : r/gmrs

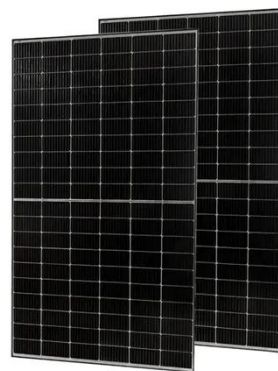
Don't worry too much about how much the power supply can give, it's the draw that matters; the midland won't draw more than a power supply can handle unless maybe it's a wallwart ...

[Get Price](#)

Grounding for a Portable Power Station?

What differentiates a portable power station from a very small vehicle? I'm not understanding how the principle (creating a low resistance path back to the source (battery) to ...

[Get Price](#)



Contact Us

For catalog requests, pricing, or partnerships, please visit:
<https://www.barkingbubbles.co.za>