

SolarInvert Energy Solutions

Double glass module working environment temperature



Overview

The monofacial double-glass photovoltaic modules are still seriously affected by the temperature effect. The coatings with spectral regulation characteristics are expected to reduce the impact from the temperature.

What is a double-glass solar module?

ABSTRACT: Double-glass modules provide a heavy-duty solution for harsh environments with high temperature, high humidity or high UV conditions that usually impact the reliability of traditional solar modules with backsheet material.

Are bifacial double-glass modules a good choice?

There has been a noticeable shift from the initial single-facial single-glass modules to bifacial double-glass modules. Double-glass modules, with their performance in the face of salt mist, high temperatures and high humidity, have won the market's favour. However, this trend is not without its risks.

Are double glass modules better than traditional modules?

Compared to traditional modules with backsheet, modules with double glass are stronger and more durable, presenting less degradation due to thermal cycling stress. Results from the thermal cycling test up to 400 cycles show about 35% to 43% less degradation with double-glass modules than with traditional modules with backsheet (Fig. 3).

Are double-glass modules flammable?

Under exposure of a strong burning fire, double-glass modules present a high degree of resistance to ignition, do not propagate fire to the roof deck or other building material, do not slip from their mounting position, and are not expected to produce any flying burning debris. (Fig. 10, 11).

What is a double glass module?

The double glass module design offers not only much higher reliability and longer durability but also significant Balance of System cost savings by

eliminating the aluminum frame of conventional modules and frame-grounding requirements. The application of double-glass modules covers multiple markets including utility, residential and commercial.

Can a double-glass PV module withstand snow and ice?

frameless double-glass module and a traditional PV module with a 3.2mm glass with an aluminum frame were both qualified to withstand heavy accumulations of snow and ice under a high pressure of 5400Pa up to 6700Pa. modules are connected electrically in series until a maximum string voltage of 600 volt or 1,000 volt is achieved.

Double glass module working environment temperature



InstallationGuide for DASSOLAR ...

DAS SOLAR suggests that modules be installed in the working environment with the temperature of -40°C to 40°C which is the monthly average highest and lowest temperature of the ...

[Get Price](#)

JA Solar PV Bifacial Double-glass Modules Installation ...

3. Serial number: each individual module has a unique serial number. The serial number has 16 digits. The 1st and the 2nd digits are the year code, and the 3th is the month code (A, B, C ...



[Get Price](#)

Thermal and electrical performance analysis of monofacial double-glass



To determine the model validation, the temperature and electrical performance of the monofacial double-glass module applied with the TPX/SiO₂ coating on the rear surface ...

[Get Price](#)

A Comprehensive Guide to Bifacial

Solar Panels

Canadian Solar Canadian Solar bifacial panels combine the advanced BSC technology with double glass module manufacturing expertise. ...

[Get Price](#)



Gree PV Module Promotion: Double-Glass Technology

Explore Gree's double-glass PV modules: history, advantages, and applications. Learn about conventional, PERC, and N-type modules.

[Get Price](#)

Raytech Double-Glass Modules , Bifacial Solar ...

Raytech as a manufacturer and supplier of high-quality double glass solar panel, solar module, and solar panel, provide you with high-quality products and ...

[Get Price](#)



Bifacial single glass encapsulation of solar module - An effective

Many studies have shown that compared with double-glass solar modules, the combination of glass front sheet and transparent backsheets has the following

advantages: ...

[Get Price](#)



What is the Double Glass (Dual Glass) Photovoltaic Solar Panel?

Glass-glass module structures (Dual Glass or Double Glass) is a technology that uses a glass layer on the back of the modules instead of the traditional polymer backsheets. ...

[Get Price](#)



Presentation

This work was authored in part by the National Renewable Energy Laboratory, operated by Alliance for Sustainable Energy, LLC, for the U.S. Department of Energy (DOE) under ...

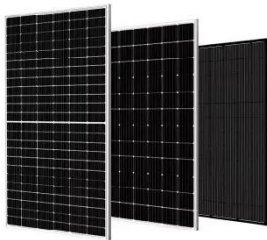
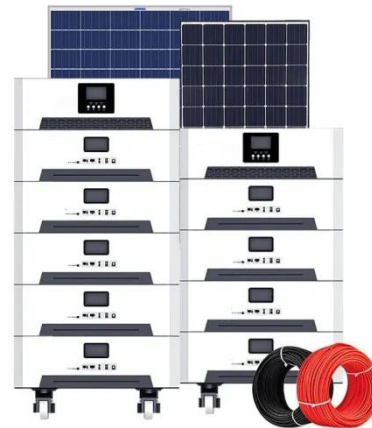
[Get Price](#)

ClearVue U.S. Greenhouse Products Greenhouse Solar ...

ClearVuePV Greenhouse Glass
 Specifications Max-Transmittance P-type
 Bifacial Double-Glass Module ClearVue's
 Max-Transmittance Greenhouse Glass is

engineered to ...

[Get Price](#)



EN????????0219-?????

The first module should be placed with the glass side up, and the following ones placed with the glass side down. (A maximum of 22 modules can be stacked for 54-cell types, and 16 modules ...

[Get Price](#)

N-TYPE MONOCRYSTALLINE DOUBLE GLASS

Maximum power test Common Standard Test Environment (STC) irradiance 1000W/m², atmospheric quality AM1.5, module temperature 25 ° C Nominal operating battery temperature ...



[Get Price](#)

Reducing the temperature of monofacial double-glass photovoltaic module

In this paper, Al foil with high thermal conductivity was introduced in the PV module, and the in-plane temperature



distribution of the monofacial double-glass PV module was ...

[Get Price](#)

INSTRUCTIONS FOR PREPARATION OF PAPERS

ABSTRACT: Double-glass modules provide a heavy-duty solution for harsh environments with high temperature, high humidity or high UV conditions that usually impact the reliability of ...

[Get Price](#)



JA SOLAR PV MODULES INSTALLATION MANUAL

The following lower/normal level of load conditions is applicable to the installation in most environment: the maximum design static load on the backside of the double glass modules is ...

[Get Price](#)

Raytech Double-Glass Modules , Bifacial Solar Modules , Raytech Double

Raytech as a manufacturer and supplier of high-quality double glass solar panel,

solar module, and solar panel, provide you with high-quality products and solar module customization service.

[Get Price](#)



1.6mm dual-glass module white paper_EU edits implemented

Due to temperature uniformity and zero moisture penetration, 1.6mm dual-glass modules show outstanding performance at high temperature and humidity environments. Furthermore, double ...

[Get Price](#)

InstallationGuide for DASSOLAR ...

DAS SOLAR suggests that modules be installed in the working environment with the temperature of -40°C to 70°C which is the monthly average highest and lowest temperature of the ...

[Get Price](#)



Microsoft Word

The word "module" or "PV module" used in this manual refers to one or more double glass solar modules. This manual is valid for the bifacial double glass module types

[Get Price](#)


Double the strengths, double the benefits

Thermal stability: The identical thermal expansion coefficients of the glass layers minimize stress on solar cells during temperature fluctuations. ...

[Get Price](#)


Single-glass versus double-glass: a deep dive into module ...

Double-glass modules, with their performance in the face of salt mist, high temperatures and high humidity, have won the market's favour. However, this trend is not ...

[Get Price](#)


Double Glass PV Module Installation Introduction

Front and back glass could protect solar cells. The module which the glass is broken must be replaced immediately. In ordinary outdoor environment, current

and voltage generated from ...

[Get Price](#)



PERC Monocrystalline Bifacial Double Glass Module

Outstanding Performance Excellent Low irradiation performance and high performance in high temperature environment.

[Get Price](#)

Reducing the temperature of monofacial double-glass ...

In this paper, Al foil with high thermal conductivity was introduced in the PV module, and the in-plane temperature distribution of the monofacial double-glass PV module was ...

[Get Price](#)



Double the strengths, double the benefits

Thermal stability: The identical thermal expansion coefficients of the glass layers minimize stress on solar cells during temperature fluctuations. Dual-sided



energy Capture: ...

[Get Price](#)

Contact Us

For catalog requests, pricing, or partnerships, please visit:
<https://www.barkingbubbles.co.za>