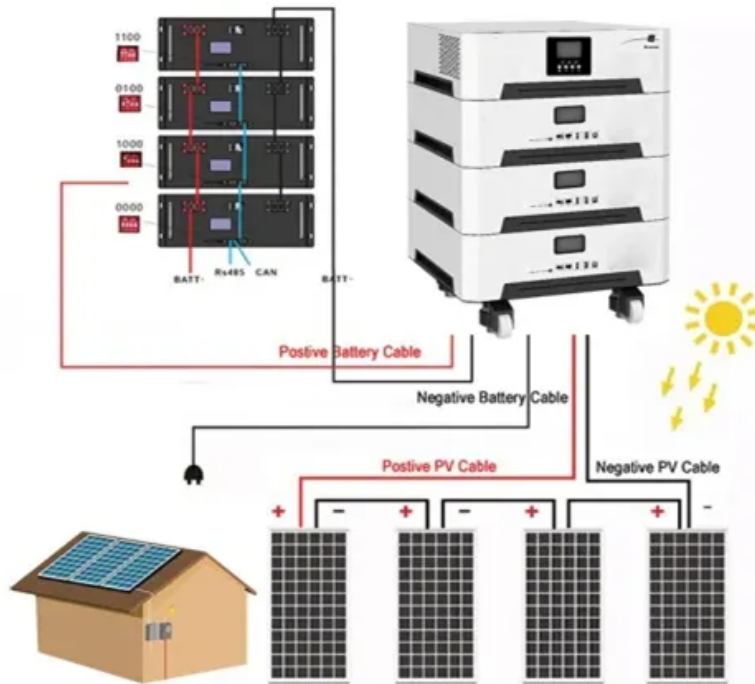


SolarInvert Energy Solutions

How big a base station should I buy a battery cabinet for



Overview

Minimum cabinet height = Rack height (to top of rail) + Battery height + Space above battery (12" ideal) + Charger height + 6" (for space above charger) Chargers need room to breathe and batteries need extra room above for maintenance (watering and testing). How to optimize battery storage space with efficient rack designs?

Optimizing space with efficient rack designs involves several strategies:
Vertical Storage Solutions: Utilizing vertical space allows more batteries to be stored within a smaller footprint. Modular Designs: Modular battery racks can be expanded or reconfigured based on changing storage needs.

What makes a good battery rack?

Safety Features: Safety is paramount; racks should include insulation to prevent electrical shorts and containment features to manage potential thermal events. These considerations collectively contribute to a robust battery rack that meets operational demands while ensuring safety. Diagram: Key Considerations in Battery Rack Design.

How can a battery rack design improve storage capacity?

Integrated Features: Including features like slide-out trays enhances accessibility while maintaining a compact design. By employing these strategies, organizations can maximize their storage capacity while ensuring ease of use. Diagram: Space Optimization Strategies in Battery Rack Design.

What are the dimensions of a battery rack?

Key considerations include material selection, thermal management, accessibility, and safety features. Q2: What are standard dimensions for battery racks?

Standard dimensions vary but typically include heights around 164 cm to 229 cm, widths of approximately 59 cm, and depths of about 59 cm. Q3: Can I get custom designs for my battery rack?

.

How do you design a battery rack?

When designing a battery rack, several key considerations must be taken into account to ensure functionality and safety: **Material Selection:** The choice of materials significantly impacts durability and resistance to environmental factors. Common materials include stainless steel and aluminum due to their strength and corrosion resistance.

What is a custom battery rack?

Custom designs for battery racks can be tailored to meet specific application needs, such as: **Industrial Applications:** Custom racks may be designed to hold larger batteries used in heavy machinery or backup power systems.

How big a base station should I buy a battery cabinet for



CellBlock Battery Fire Cabinets

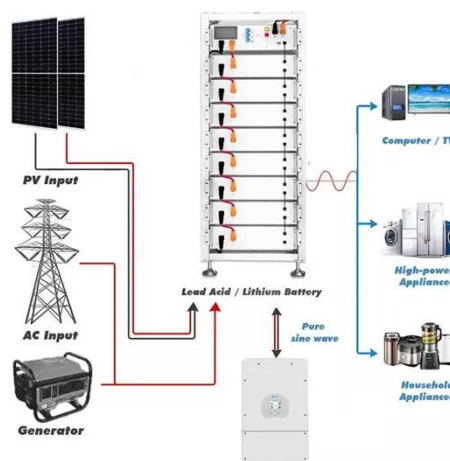
CellBlock Battery Storage Cabinets are a superior solution for the safe storage of lithium-ion batteries and devices containing them.

[Get Price](#)

What Size of a Portable Power Station Do I Need for Camping?

This means you'll need a portable power station to keep everything charged. But with portable power stations ranging from under 100 watt-hours to over 2000 watt-hours, how ...

[Get Price](#)



Energy Storage Battery Cabinet

Energy storage battery cabinet HJ-SG-P type: This series of products integrates battery PACK, BMS system, high voltage box, power distribution unit, ...

[Get Price](#)

Battery Cabinet Dimensions Guide , Huijue Group E-Site

Have you ever calculated how much floor space your battery cabinets truly require? In Q2 2024, a surprising 68% of industrial facilities reported underutilized energy storage capacity directly ...

[Get Price](#)



Site Battery Storage Cabinet, Base Station Energy Storage

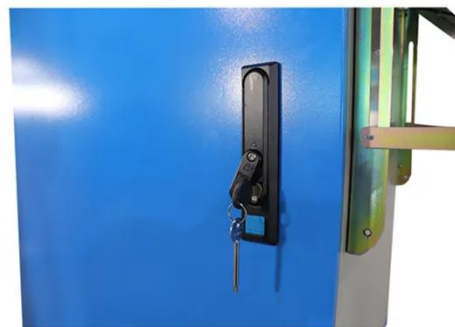
Highjoule's Site Battery Storage Cabinet ensures uninterrupted power for base stations with high-efficiency, compact, and scalable energy storage. Ideal for telecom, off-grid, and emergency ...

[Get Price](#)

How to Choose the Right Battery Cabinet for Your Business Needs

There are many factors to consider, like size and compatibility. Also, think about ventilation and security. Don't worry, we've got you covered. Read on to discover how to make ...

[Get Price](#)



Choosing the Right Battery Storage Cabinet: A ...

This comprehensive guide provides a detailed overview of safety, design, compliance, and operational considerations for selecting and using ...

[Get Price](#)


Outdoor BESS Battery Energy Storage Cabinet System for 4 x ...

AZE can provide a wide selection range of outdoor integrated cabinet, battery cabinet and telecom equipment cabinet, which are widely used in wireless communication base station ...


[Get Price](#)


How to Right-Size Your Battery Storage System

Proper battery sizing depends on several factors: how much electricity is needed to keep devices powered, how long those devices will rely on stored energy, and the actual capacity of each ...

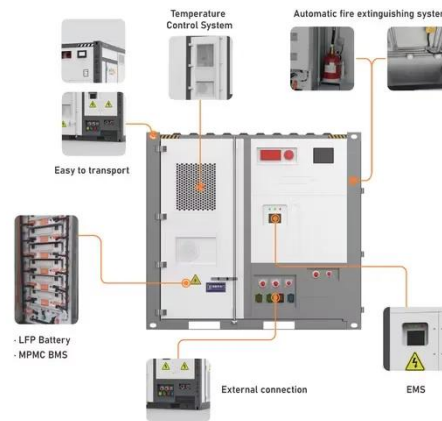
[Get Price](#)

Power Supply Box vs. Battery for base setup

The battery plant (commercial term for battery strings and a charger) is 5 strings of 105 AH 12 volt AGM batteries and a modular rectifier (charger / power

supply) that is 180 amp ...

[Get Price](#)



Choosing the Right Battery Storage Cabinet: A Comprehensive ...

This comprehensive guide provides a detailed overview of safety, design, compliance, and operational considerations for selecting and using lithium-ion battery storage ...

[Get Price](#)

ESTEL Outdoor Battery Cabinet Buying Guide for 2025

The size of the battery cabinet should match the physical dimensions and weight of your battery system. A cabinet that's too small can ...

[Get Price](#)



What Are the Key Considerations in Battery Rack Design and ...

Battery rack design and dimensions are critical aspects of effective energy storage solutions, influencing everything from safety to efficiency. Understanding



the key ...

[Get Price](#)

Battery Storage Cabinets: A Comprehensive Buyer's Guide

Learn how to choose the best battery storage cabinets with safety, compatibility, and durability in mind. Maximize performance and protect your energy system.

[Get Price](#)



What Are the Key Considerations in Battery Rack ...

Battery rack design and dimensions are critical aspects of effective energy storage solutions, influencing everything from safety to efficiency. ...

[Get Price](#)

Need Multiple Base Stations?? , SimpliSafe Support Home

The keypad should 100% have a light on it... indicating if the alarm is on or off. I shouldn't have to look at the base station to know if my alarm is on,

especially since we enter ...

[Get Price](#)



Where Should I Place My Base Station? , SimpliSafe ...

The Base Station should be placed in a centrally-located area within your home or business, and in an open space. It is recommended that the Base Station is ...

[Get Price](#)

Tips for Designing Battery Cabinets/Enclosures , SBS Battery

Chargers need room to breathe and batteries need extra room above for maintenance (watering and testing). To calculate the minimum height of the cabinet, use the general formula above.

...

[Get Price](#)



ESTEL Outdoor Battery Cabinet Buying Guide for 2025

The size of the battery cabinet should match the physical dimensions and weight of your battery system. A cabinet



that's too small can lead to overheating or poor ventilation, ...

[Get Price](#)

Battery Storage Cabinet Buying Guide: Features, Safety, and ...

This article will take you deep into understanding factors to consider when choosing a battery energy storage cabinet to make wise choices and make sure your investment can bring long ...

[Get Price](#)



Lithium-Ion Battery Charging Safety Cabinet For Sale

A battery cabinet is a particular type of storage cabinet that reduces the risks associated with lithium-ion batteries. These innovative cabinets create a safer environment in which ...

[Get Price](#)

Gateway and Base Station Installation Guide

Installation Planning IMPORTANT: This document provides guidelines for the proper placement and installation of Gateways, Base Stations, and the

antennas. Failure to follow the ...

[Get Price](#)



- ✓ IP65/IP55 OUTDOOR CABINET
- ✓ OUTDOOR TELECOM CABINET
- ✓ OUTDOOR ENERGY STORAGE CABINET
- ✓ 19 INCH

How to Choose the Right Battery Cabinet for Your Needs

If you need to store batteries for home, a workshop, or a business, know what to look for in battery storage units. Selecting the right cabinet ensures safety, efficiency, and ...

[Get Price](#)

How to Right-Size Your Battery Storage System

Proper battery sizing depends on several factors: how much electricity is needed to keep devices powered, how long those devices will rely on stored energy, ...

[Get Price](#)



Choosing the right size power supply for your radio

How do you power a mobile radio for use as a base station? Get a power supply. But this isn't a cut and dry, one-size-fits-all sort of thing. ...

[Get Price](#)


Lithium Ion Battery Storage Cabinet LBSC-A10 , Battery Cabinet

Labtron is a leading supplier of the Lithium Ion Battery Storage Cabinet. The LBSC-A10 features an 18 L sump, five shelves supporting 75 kg each, and DN75 air ducts, ideal for secure battery ...

[Get Price](#)


Base Stations for Beyond? : r/BigscreenBeyond

You could get Beyond + Index controllers and index base stations for \$1580 I wouldn't bother with base station 1 unless you can get a deal like the poster saying they got them for \$50 each. I ...

[Get Price](#)

IP55 Outdoor Telecom Equipment Cabinet For BTS ...

Buy Now: IP55 Outdoor Telecom Equipment Cabinet For BTS Station with

Air Conditioner. The outdoor telecom cabinet can integrated monitor with various ...

[Get Price](#)



Contact Us

For catalog requests, pricing, or partnerships, please visit:
<https://www.barkingbubbles.co.za>