

## SolarInvert Energy Solutions

# How big an inverter should I use for 24v

### Highvoltage Battery



## Overview

---

Before we go any further, we highly recommend that you choose a pure sine wave inverter. This type of inverter delivers high-quality electricity, similar to your utility company. This way, none of your appliances run the risk of being damaged. Now, when it comes to sizing your inverter, you always need to check.

We have summarized the appliances that inverters from 300W to 3000W can run depending on their rated maximum power. Note to our readers: Use the above formula to determine.

A 2-3kW inverter is pretty standard for a 24V system. Just keep in mind that you don't want to pull over 100A from your battery if you can avoid it, as that can lead to higher costs for wiring and equipment. How do I choose the right inverter size?

Here is our last bit of advice on how to select the correct inverter size: Check our inverter size chart. List all your appliances in the function of their power output. Apply our inverter size formula. Do not exceed 85% of your inverter's maximum power continuously. Oversize your inverter for extra appliances in the future.

What are the different solar inverter sizes?

Solar generators range in size from small generators for short camping trips to large off-grid power systems for a boat or house. Consequently, inverter sizes vary greatly. During our research, we discovered that most inverters range in size from 300 watts up to over 3000 watts. In this article, we guide you through the different inverter sizes.

What voltage should a 12V inverter run on?

The input voltage of the inverter should match the battery voltage. (For example 12v battery for 12v inverter, 24v battery for 24v inverter and 48v battery for 48v inverter)

### Summary What Will An Inverter Run & For How Long?

.

How much battery do I need to run a 3000-watt inverter?

You would need around 24v 150Ah Lithium or 24v 300Ah Lead-acid Battery to run a 3000-watt inverter for 1 hour at its full capacity Here's a battery size chart for any size inverter with 1 hour of load runtime Note! The input voltage of the inverter should match the battery voltage.

How much power does an inverter need?

The continuous power requirement is actually 2250 but when sizing an inverter, you have to plan for the start up so the inverter can handle it. Third, you need to decide how long you want to run 2250 watts. Let's say you would like to power these items for an eight-hour period.

What size cable do I need for a 3500W inverter?

For inverters rated up to 3500W, the cable size should be 1/0 AWG, sufficient to handle the startup and continuous current required. Another consideration is the inline fuse, as this will protect both sides of the system in the event of a shortage in the system. To ascertain the fuse you need, divide the AC wattage by the DC Voltage.

## How big an inverter should I use for 24v

---



### What Size Inverter Do I Need for a 200AH Battery?

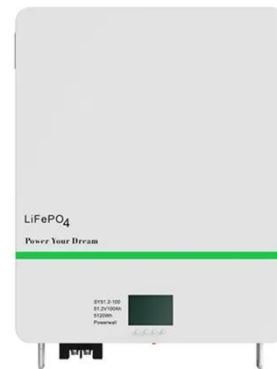
To determine the appropriate inverter size for a 200AH battery, you need to consider the total wattage of the devices you plan to power. A general rule is to choose an ...

[Get Price](#)

### How To Size A Solar Inverter in 3 Easy Steps

Choose an inverter that has a surge watt rating equal to or greater than this value. As for voltage drop, check the wire length between your solar panels and the ...

[Get Price](#)



### What Size Fuse Do I Need for a 2000W Inverter? , Redway

When setting up a 2000W inverter, choosing the correct fuse size is crucial to ensure both safety and efficiency. A fuse acts as a protective device for your inverter and the ...

[Get Price](#)

### Inverter Size Calculator , Find Your Perfect Power Match

Standard 12v models top out around 3000w (24v/48v ~ 4000w). To proceed: Upgrade to a higher-voltage system (24 V/48 V) for a larger inverter. Consider a higher ...

[Get Price](#)



## How To Size A Solar Inverter in 3 Easy Steps

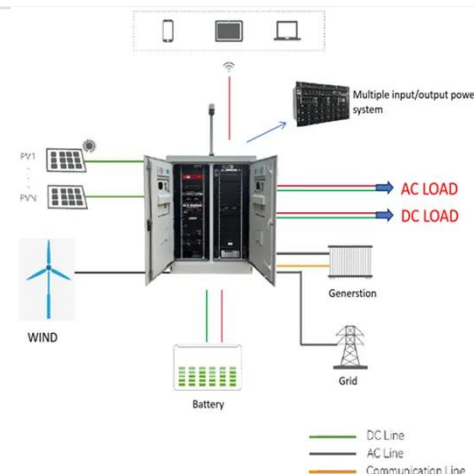
Choose an inverter that has a surge watt rating equal to or greater than this value. As for voltage drop, check the wire length between your solar panels and the batteries. If the wire length is ...

[Get Price](#)

## What Size Inverter Do I Need

What size inverter do you need? This guide covers wattage calculations, surge power, and key factors to help you choose the right ...

[Get Price](#)



## How many amps does a 3000 watt inverter draw?

In general, if the 3000 Watt inverter is going to run on a 24V battery bank, you should use 4/0 AWG copper wires. If the battery bank is rated at 48V, you should



use 1/0 ...

[Get Price](#)

---

## The Only Inverter Size Chart You'll Ever Need

We have created a comprehensive inverter size chart to help you select the correct inverter to power your appliances.

[Get Price](#)



---

## What Size Inverter Do I Need?

Finding the proper inverter size for your needs is as simple as adding together the necessary wattages of the items that you're looking to power.

[Get Price](#)

---

## What Size Inverter do I Need? [with Examples]

Sizing an inverter is very simple, as long as you know how much power do you exactly need. If you think that at some point you will be plugging in more

devices, consider that as well and ...

[Get Price](#)



### **What Size Inverter Do I Need for a 200Ah Battery?**

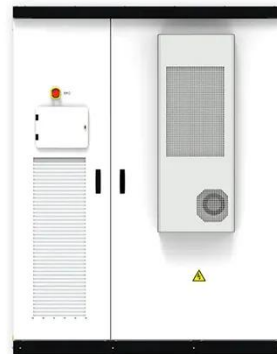
To size an inverter for a 200Ah battery, calculate the total wattage of devices you plan to run. Choose an inverter rated at least twice your total wattage; for example, if your ...

[Get Price](#)

### **What size inverter can I run off a 100Ah lithium battery?**

A 100Ah lithium battery can typically support an inverter up to 1,200W for 1 hour, assuming a 12V system. Actual runtime depends on load wattage and battery voltage. For ...

[Get Price](#)



### **How to size an inverter that can run your air conditioner?**

For example, the equivalent of 3000VA is 2400 Watts. In any case, the Continuous Power rating of the inverter you choose should be higher than ...



[Get Price](#)

---

## Inverter Size Chat: What Size Inverter Do I Need?

That's why I've put together a handy inverter size chart in order for you to quickly find out what size inverter is best for your needs. We'll start by going through ...

[Get Price](#)

---

## Solar Inverter Sizing Guide for Maximum Efficiency

When choosing a solar inverter, size matters more than you might think. The right solar inverter sizing helps ensure your system performs ...

[Get Price](#)

---

## How Many 12V Batteries for 3000W Inverter

And for those of you considering a 48V or 24V system, I'll explain why I typically recommend a 48V system for a 3000W inverter. With a 48V system, you can



reduce the current, simplify your

[Get Price](#)



### What size inverter can I run off a 100Ah lithium battery?

A 100Ah lithium battery can safely power an inverter with a continuous wattage rating of 1,000-1,200W in a 12V system, assuming 80% depth of discharge and 90% inverter ...

[Get Price](#)

### Calculate Battery Size For Any Size Inverter (Using Our Calculator)

The input voltage of the inverter should match the battery voltage. (For example 12v battery for 12v inverter, 24v battery for 24v inverter and 48v battery for 48v inverter)

[Get Price](#)



### Inverter Size Calculator

The Inverter Size Calculator is a powerful tool to help you select the right inverter based on your specific load requirements, efficiency level, and safety needs.

[Get Price](#)


## Inverter Size Chat: What Size Inverter Do I Need?

That's why I've put together a handy inverter size chart in order for you to quickly find out what size inverter is best for your needs. We'll start by going through the basic considerations, use ...


[Get Price](#)


## Choosing the Best Inverter Size for a 200Ah Lithium ...

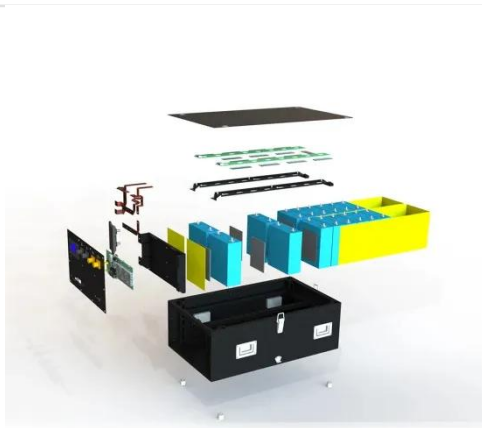
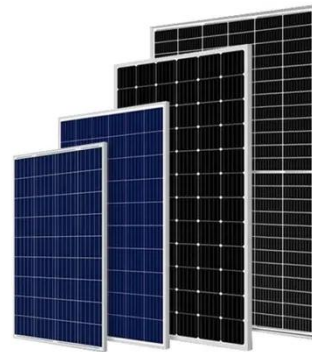
Multiply these figures for 24V or 48V systems, as they contain more total energy. Battery Management System (BMS) Considerations for 200Ah ...

[Get Price](#)

## What Size Inverter Do I Need?

Learn how to calculate what size inverter you need with The Inverter Store's handy guide. We make the process straightforward for you to fit your exact

...

[Get Price](#)

### **What Size Inverter You Need (Calculations + Battery)**

Inverters are made with different power capacities, depending on the size of the system you want to run. For this discussion, we are looking at a ...

[Get Price](#)

### **Calculate Battery Size For Any Size Inverter (Using Our Calculator)**

Pairing a right size capacity battery for an inverter can be a bit confusing for most the beginners So I have made it easy for you, use the calculator below to calculate the battery ...

[Get Price](#)

### **12V vs 24V Inverter: What's The Difference & Which is Better**

Torn between 12V and 24V inverters? Discover the key differences in efficiency, cost, and power capacity to determine which is better for your



energy needs.

[Get Price](#)

---

### **What Size Inverter Should I Use for My 24V, 206Ah Battery Setup?**

A 2-3kW inverter is pretty standard for a 24V system. Just keep in mind that you don't want to pull over 100A from your battery if you can avoid it, as that can lead to higher ...

[Get Price](#)



### **What Size Inverter Do I Need**

What size inverter do you need? This guide covers wattage calculations, surge power, and key factors to help you choose the right inverter size.

[Get Price](#)

---

### **What Size Inverter Do I Need for a 200Ah Lithium Battery**

How do you determine the right size inverter for a 200Ah lithium battery? The ideal inverter size depends on your power needs and the ...

[Get Price](#)



## Contact Us

For catalog requests, pricing, or partnerships, please visit:  
<https://www.barkingbubbles.co.za>