

## SolarInvert Energy Solutions

# How big an inverter should I use for a 26kw photovoltaic panel



## Overview

---

What size solar inverter do I Need?

A 4.5 kW array (or ten 450-watt solar panels) would just about cover your consumption. The type of solar panels you choose can also impact the size of the inverter you need. Different types of solar panels have different wattage ratings and efficiency levels. The three main types of solar panels are monocrystalline, polycrystalline, and thin film.

Should your inverter size match your solar panel size?

Match your inverter to your lifestyle, not just your roof. If you're running a fridge, home office, and PS5 all day, size accordingly. If you're barely home, go leaner. Here's the cheat code: your inverter size should usually match your solar panel system's size in kilowatts.

How do I choose a solar inverter?

This is the most critical factor in solar inverter sizing. Check the total wattage of your solar array (DC) and use it to calculate the appropriate inverter output (AC). For optimal results, a 6.6kW array typically pairs with a 5kW inverter, falling within the accepted array-to-inverter ratio of 1.15 to 1.33.

How do I choose the right inverter size?

When considering an inverter's size, it's important to understand the difference between surge power, which is the peak power needed to start a device, and continuous power, the amount required to keep it running. These factors play a significant role in determining the right inverter size for my setup.

How much power does an inverter need?

The continuous power requirement is actually 2250 but when sizing an inverter, you have to plan for the start up so the inverter can handle it. Third, you need to decide how long you want to run 2250 watts. Let's say you would

like to power these items for an eight-hour period.

How does the inverter size calculator work?

Our Inverter Size Calculator simplifies this task by accurately estimating the recommended inverter capacity based on your solar panel power and quantity. By inputting your panel's rated power and number of panels, the calculator produces a recommended inverter power range that aligns with 80-100% of your system's total DC capacity.

## How big an inverter should I use for a 26kw photovoltaic panel

---



### What Size Inverter Do I Need?

Finding the proper inverter size for your needs is as simple as adding together the necessary wattages of the items that you're looking to power.

[Get Price](#)

---

### What Size Solar Inverter Do I Need?

The inverter should closely match your panel capacity (80-100% of the array size). For example, if you install a 6 kW solar PV system, you'll need ...

[Get Price](#)



---

### Inverter Size Calculator - self2solar

Determining the correct inverter size depends on your solar array's capacity and your household's power needs. Generally, the inverter should be sized to match about ...

[Get Price](#)

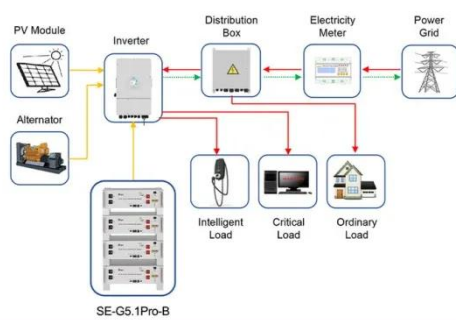


---

### Solar System Size Calculator: How Much Solar Do I ...

Use our free solar system size calculator to estimate how much solar you need for your house. Quickly calculate how many solar panels you ...

[Get Price](#)



Application scenarios of energy storage battery products

## Solar Inverter Sizing: A Comprehensive Guide for Efficiency

Understanding Solar Inverter Sizing  
When sizing a solar inverter, we must consider both the peak power output and the continuous power requirements of your solar panel ...

[Get Price](#)

## What Size Inverter Needed for Solar Panels?

But if you wanted to use a more powerful 200-watt light bulb for the same amount of time, you would need 2 solar panels and a 200-watt inverter. ...

[Get Price](#)



## Choosing the Right Inverter Size for Your Solar ...

Find out what size inverter do i need for your solar system. Get expert advice on choosing the right inverter for your solar setup.


[Get Price](#)

## What Size Solar Inverter Do I Need? Experts Break It Down

What Size Solar Inverter Do I Need? A solar inverter should closely match your solar system's output in kW--typically within 80% to 120% of your total panel capacity.


[Get Price](#)


## Solar Inverter Sizing Guide for Maximum Efficiency

This article explains how to calculate your inverter size, what affects it, and how to avoid costly mistakes, especially when using high ...

[Get Price](#)


## Exact size of the Transformer for a Commercial solar project.

Hello, Could you please help me figure out the exact size of the transformer that is back-feeding to the utility? Is the procedure similar to a typical

transformer, or is there any ...

[Get Price](#)



### **What Size Inverter You Need (Calculations + Battery)**

Finding the proper inverter size for your needs is as simple as adding together the necessary wattages of the items that you're looking to power.

[Get Price](#)

### **How To Size an Inverter: Solar Inverter Sizing Explained**

When sizing an inverter, calculate the total wattage needed and understand surge vs. continuous power. Choose the right size with a 20% safety margin. Factor in simultaneous ...

[Get Price](#)



### **SOLAR INVERTER SIZING CHOOSE THE RIGHT SIZE INVERTER**

How big should a solar inverter be? Most installations slightly oversize the inverter, with a ratio between 1.1-1.25 times the array capacity, to account for

these considerations. The size of the ...

[Get Price](#)



## How To Size Your Off-Grid Solar Power System

The same goes for RVs because you want to be able to conveniently use grid power to charge your batteries when you travel through ...

[Get Price](#)



## Inverter Size Calculator - self2solar

Determining the correct inverter size depends on your solar array's capacity and your household's power needs. Generally, the inverter ...

[Get Price](#)



## What Size Inverter You Need (Calculations + Battery)

Inverters are made with different power capacities, depending on the size of the system you want to run. For this discussion, we are looking at a domestic



inverter that you can ...

[Get Price](#)

#### APPLICATION SCENARIOS



### How To Size an Inverter: Solar Inverter Sizing Explained

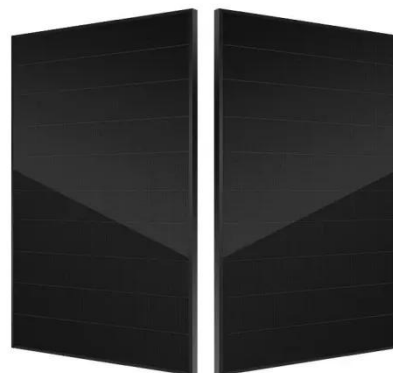
When sizing an inverter, calculate the total wattage needed and understand surge vs. continuous power. Choose the right size with a 20% ...

[Get Price](#)

### Inverter Wire Size Calculator

Noting the size of inverter that you're using is the first step in finding safe cables. Whether you need to know what size cables for a 2000-watt inverter or what ...

[Get Price](#)

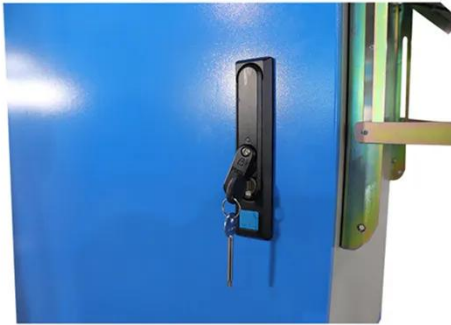


### What Size Solar Inverter Do I Need? A Quick Sizing Guide

This guide will walk you through an easy, step-by-step process to accurately size your inverter, avoid common pitfalls, and highlight how our Lefor Solar Inverter

Series can fit your specific ...

[Get Price](#)



## Solar Panel Inverter Size Calculator: Know What You Need , Angi

For this reason, you should choose a solar inverter that's similar in size to the DC rating of your solar array, the collective number of panels feeding into the inverter. The DC ...

[Get Price](#)



## What Size Solar Inverter Do I Need? A Quick Sizing ...

This guide will walk you through an easy, step-by-step process to accurately size your inverter, avoid common pitfalls, and highlight how our Lefor Solar Inverter ...

[Get Price](#)

## What Size Inverter For 10kw Solar System?

What Size Inverter For 10kw Solar System: For a 10kW solar system, you typically need an inverter with a capacity of around 10,000 to 13,000 watts to ...

[Get Price](#)

### How Many Panels Can I Put on My Inverter?

How many solar panels you can put on your inverter? It depends on the capacity of an inverter is measured in kilowatts (kW) and other necessary information.

[Get Price](#)

### How To Size A Solar Inverter in 3 Easy Steps

In this guide, we share 3 easy steps on how to size a solar inverter correctly. We explain the key concepts that determine solar inverter sizing including your power needs, the type and number ...

[Get Price](#)

### Choosing the Right Inverter Size for Your Solar System

Find out what size inverter do i need for your solar system. Get expert advice on choosing the right inverter for your solar setup.

[Get Price](#)

---

### **What Size Solar Inverter Do I Need? Experts Break It ...**

What Size Solar Inverter Do I Need? A solar inverter should closely match your solar system's output in kW--typically within 80% to 120% of your ...

[Get Price](#)

---

### **Solar Inverters: Types, Pros and Cons , Solar**

Solar inverters change the power produced by your solar panels into something you can actually use. Think of it as a currency exchange for your power.

[Get Price](#)

---

### **Solar Inverter Sizing Guide for Maximum Efficiency , Mingch**

This article explains how to calculate your inverter size, what affects it, and how to avoid costly mistakes, especially when using high-efficiency solutions like

MINGCH Electrical's ...

[Get Price](#)



**18650** 3.7V  
Li-ion  
RECHARGEABLE BATTERY  
**2000mAh**



### Solar panel inverters & costs: the expert guide [UK, ...

What is a solar panel inverter? A solar panel inverter converts the direct current (DC) electricity generated by your solar panels into alternating ...

[Get Price](#)

### Size your solar system

Because the panels are only rarely generating at their full rated capacity, this can be a good way to get the best value from the inverter and often makes good economic sense. Talk to your ...

[Get Price](#)



### PVWatts Calculator

NREL's PVWatts ® Calculator Estimates the energy production of grid-connected photovoltaic (PV) energy systems throughout the world. It allows homeowners, small building owners, ...

[Get Price](#)

## Contact Us

---

For catalog requests, pricing, or partnerships, please visit:  
<https://www.barkingbubbles.co.za>