

SolarInvert Energy Solutions

How big an inverter should I use for a 48v 280w

ESS



AI-W5.1-B-ESS

All-in-one

≥6000 Cycle Life



Overview

To calculate the appropriate inverter size for a 48V battery system, you need to determine the total wattage of the devices you plan to power. The formula is: $\text{Inverter Size (Watts)} = \text{Total Load (Watts)} / \text{System Voltage (48V)}$. How do I choose the right inverter size?

Here is our last bit of advice on how to select the correct inverter size: Check our inverter size chart. List all your appliances in the function of their power output. Apply our inverter size formula. Do not exceed 85% of your inverter's maximum power continuously. Oversize your inverter for extra appliances in the future.

What are the different solar inverter sizes?

Solar generators range in size from small generators for short camping trips to large off-grid power systems for a boat or house. Consequently, inverter sizes vary greatly. During our research, we discovered that most inverters range in size from 300 watts up to over 3000 watts. In this article, we guide you through the different inverter sizes.

How much power does an inverter need?

The continuous power requirement is actually 2250 but when sizing an inverter, you have to plan for the start up so the inverter can handle it. Third, you need to decide how long you want to run 2250 watts. Let's say you would like to power these items for an eight-hour period.

How to choose a power inverter?

Second, select an inverter. For this example, you will need a power inverter capable of handling 4500 watts. The continuous power requirement is actually 2250 but when sizing an inverter, you have to plan for the start up so the inverter can handle it. Third, you need to decide how long you want to run 2250 watts.

How do I Choose an RV inverter?

Calculate the total wattage by adding up the running watts of all appliances. Take into consideration the surge requirements of appliances with electric motors. Choose an inverter size that's at least 20% larger than the total calculated wattage. Identify the largest power draws in your RV to accurately size the inverter for your specific needs.

What voltage should a 12V inverter run on?

The input voltage of the inverter should match the battery voltage. (For example 12v battery for 12v inverter, 24v battery for 24v inverter and 48v battery for 48v inverter)

Summary What Will An Inverter Run & For How Long?

How big an inverter should I use for a 48v 280w



What Size Inverter Do I Need?

Finding the proper inverter size for your needs is as simple as adding together the necessary wattages of the items that you're looking to power.

[Get Price](#)

What Size Inverter You Need (Calculations + Battery)

When looking at an inverter to run your entire home from a solar PV System, these are much bigger, but in essence, the principles behind the ...

[Get Price](#)



How To Size an Inverter: Solar Inverter Sizing Explained

When sizing an inverter, calculate the total wattage needed and understand surge vs. continuous power. Choose the right size with a 20% ...

[Get Price](#)



What Size Inverter You Need (Calculations + Battery)

When looking at an inverter to run your entire home from a solar PV System, these are much bigger, but in essence, the principles behind the calculation are the same. Still, ...

[Get Price](#)



Understanding Battery Capacity and Inverter Compatibility

Considerations: Inverter Efficiency: Higher efficiency reduces energy loss and maximizes battery usage. Power Requirements: Match the inverter size to your peak and ...

[Get Price](#)

Advice on selecting an inverter - Sinetech

What size inverter must I use? Sinetech stocks many different sizes, and several brands of power inverters for solar and commercial use. We also carry a range of professional telecom ...

[Get Price](#)



How to Calculate Fuse Size for Solar System

Fuses, circuit breakers, class-T fuses, In the article, I will show you how to select the right size fuse for your DIY solar system.

[Get Price](#)

Inverter Size Calculator

Learn how to calculate the required size of an inverter with our in-depth guide. We provide a handy formula, examples, and answers to common questions to help you make the right ...

[Get Price](#)

The Only Inverter Size Chart You'll Ever Need

We have created a comprehensive inverter size chart to help you select the correct inverter to power your appliances.

[Get Price](#)

How To Size An Inverter for Solar and Off Grid

If you want to know how to size an inverter, the answer is simple. All you have to do is find out how much power your devices need. Then, do some

simple math to determine how ...

[Get Price](#)



What Size Fuse Should I Use for My 48V Inverter?

I'm trying to figure out the right fuse size for my 48V inverter, which is rated for 2000 watts continuously and can peak at 4000 watts. Based on what I've read, I think I need a 60 ...

[Get Price](#)

12V vs 24V vs 48V Inverter: How to Choose the Right System for ...

Whether you're powering an RV, building a solar setup, or running an off-grid home, choosing the right inverter system voltage is crucial. Many beginners ask: Should I use ...

[Get Price](#)



51.2V 150AH, 7.68KWH

Calculate Battery Size For Any Size Inverter (Using Our Calculator)

So I have made it easy for you, use the calculator below to calculate the battery size for 200 watt, 300 watt, 500 watt, 1000 watt, 2000 watt, 3000 watt,



5000-watt inverter

[Get Price](#)

Inverter Size Chat: What Size Inverter Do I Need?

To find out your size, you just need to add together the total wattage of the appliances you wish to run. For example, TV (60W), coffee maker (700W), ...

[Get Price](#)



What Will An Inverter Run & For How Long? (With ...

I saw on many forums that most people are confused about what they can run on their 1000,1500,2000,3000, & 5000-watt inverter and how long ...

[Get Price](#)

How To Size an Inverter: Solar Inverter Sizing Explained

When sizing an inverter, calculate the total wattage needed and understand surge vs. continuous power. Choose the right size with a 20% safety margin.

Factor in simultaneous ...

[Get Price](#)



Inverter Size Chat: What Size Inverter Do I Need?

To find out your size, you just need to add together the total wattage of the appliances you wish to run. For example, TV (60W), coffee maker (700W), lamp (60W), phone (5W). So add together ...

[Get Price](#)

48V Battery Run Time Calculator

This 48V Battery Run Time Calculator helps you determine how long a 48V battery system will run under specific load conditions.

[Get Price](#)



How to Determine the Correct Fuse for Your Inverter

Discover how to choose the correct fuse size and type for your inverter with our guide. Power ratings, system voltage, current calculation, and fuse selection ...

[Get Price](#)


48V 100Ah

How To Size An Inverter for Solar and Off Grid

If you want to know how to size an inverter, the answer is simple. All you have to do is find out how much power your devices need. Then, do ...


[Get Price](#)


Inverter Cable Size Calculator

The Inverter Cable Size Calculator is a tool that helps you determine the appropriate cable size for your inverter system based on several factors, including the power of the inverter, voltage, ...

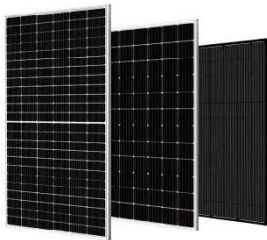
[Get Price](#)

What Size Inverter Can I Run Off a 100Ah Battery? A ...

When selecting an inverter to pair with a 100Ah battery, it's crucial to understand the power requirements of your appliances and the capabilities of your

inverter. The right ...

[Get Price](#)



What Size Inverter Do I Need for a 200AH Battery?

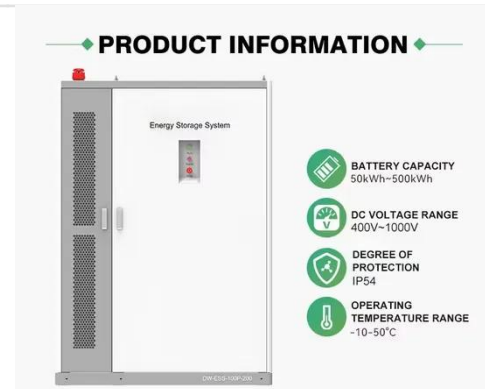
To determine the appropriate inverter size for a 200AH battery, you need to consider the total wattage of the devices you plan to power. A general rule is to choose an ...

[Get Price](#)

Calculate Battery Size For Any Size Inverter (Using Our Calculator)

We have created a comprehensive inverter size chart to help you select the correct inverter to power your appliances.

[Get Price](#)

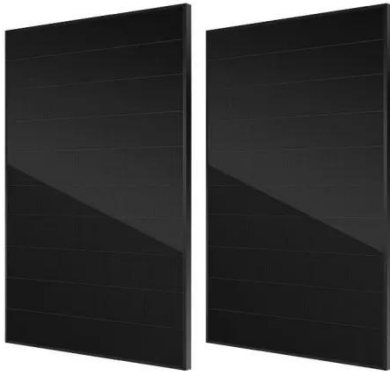


Can an Inverter Be Too Big for Your Battery System?

When sizing for 24V or 48V systems, recalculate using the higher voltage. A 48V 100Ah lithium battery (4.8kWh) paired with a 5000W inverter works

because $48V \times 100Ah \times 1C = 4800W$

[Get Price](#)



What Size Inverter Do I Need?

Learn how to calculate what size inverter you need with The Inverter Store's handy guide. We make the process straightforward for you to fit your exact

...

[Get Price](#)



How Do You Calculate the Appropriate Inverter Size for a 48V

...

To calculate the appropriate inverter size for a 48V battery system, you need to determine the total wattage of the devices you plan to power. The formula is: Inverter Size ...

[Get Price](#)

Contact Us

For catalog requests, pricing, or partnerships, please visit:
<https://www.barkingbubbles.co.za>