

## SolarInvert Energy Solutions

# How high above the roof can photovoltaic panels be



## Overview

---

Solar panels should be mounted at a height of 3.75" to 5.25" from the roof's surface to ensure optimal performance. This measurement takes into account the seam of the SSMR, typically 1.5" to 3" in height, the mounting hardware, adding approximately  $\frac{3}{4}$ " and the module frame, contributing another 1.5". Can solar panels be mounted on a roof?

Mounting solar panels on a roof surface to create a solar power system is known as rooftop solar mounting. Solar panels can't be put on a roof without first having mounting brackets installed.

What is a good roof pitch for solar panels?

The ideal roof pitch for solar panels is between 15 and 40 degrees. This angle ensures the panels get the most sun. Homeowners should check their roof's orientation and pitch. A well-angled roof boosts solar panel efficiency. A bad angle can reduce energy output, making solar panels less worthwhile.

How do I know if my roof is suitable for solar panels?

Assess your roof's load-bearing capacity to support the weight of the solar panel system. Identify any obstructions or shading that could impact the efficiency of your solar panels. Ensure your roof's ventilation system is compatible with solar panel installations. The roof is key when installing solar panels.

How high should a solar installation be?

If we go with a traditional solar installation, it takes up the entire rooftop space and only gives us a height of 500mm above the ground (it is for cleaning purposes to remove dust and debris). If we choose an elevated design, we will have a clearing distance of 2000 mm (depending on the consumer's needs) from the ground level.

Do you need a roof check before installing solar panels?

A detailed roof check is needed before installing solar panels. Look at the roof's structure, age, and condition. Fix any issues to ensure it can hold the solar system. Discover essential roof requirements for solar panels. Learn about pitch, load capacity, and materials to ensure your home is ready for a solar energy system.

Should PV panels be placed on residential roofs?

Paths for fire and rescue. Placing PV panels on residential roofs is a balancing act between getting the most possible wattage and creating safe pathways for first responders who may have to climb the roof in an emergency.

## How high above the roof can photovoltaic panels be

---



### Roof Anchor System for Solar Panels

Consider the roof type (material and slope), weatherproofing, installation convenience, and wind and snow loadings. Choose an appropriate racking and mounting system for the type of PV ...

[Get Price](#)

### How To Lift Solar Panels Onto Roof

To lift solar panels onto your roof, you can use a ladder railing system, a pulley system, a lifting bag, or even DIY lifting systems using a ...

[Get Price](#)



### Rules for Rooftop Solar

For roofs where PV panels cover up to 33% of the total area in plan view (essentially, as seen from above), the panels must be at least 18 in. away from a horizontal ridge on both sides to ...

[Get Price](#)



### Solar Electric Panel for Home in

## India 2025 , Complete Guide

What is a Solar Electric Panel for Home?

A solar electric panel for home is a photovoltaic (PV) module that converts sunlight into electricity. These panels are typically ...

[Get Price](#)



Standard 20ft containers



Standard 40ft containers

**How close to the edge of your roof can your solar ...**

Ideally solar panels should not be installed right up to the edges of your roof. But how much space should be left exactly?

[Get Price](#)

## Solar Panel Roof Requirements: What You Need to Know

However, if the pitch is right, roofs facing east or west can also work. The ideal roof pitch for solar panels is between 15 and 40 degrees. This angle ensures the panels get the ...

[Get Price](#)



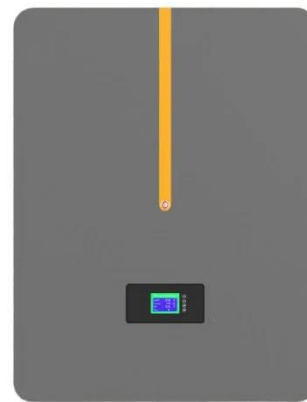
## PVWatts Calculator

NREL's PVWatts ® Calculator Estimates the energy production of grid-connected photovoltaic (PV) energy systems throughout the world. It allows homeowners, small building owners, ...

[Get Price](#)


## In Roof Solar Panels: How Are They Different and Are ...

Learn about in roof solar panels, including their pros, cons, efficiency, and cost. Compare them to traditional panels and see if they're right ...

[Get Price](#)


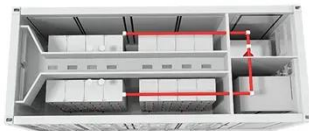
## How High to Mount Solar Panels Above Roof for Best ...

Height above the roof affects energy production, structural loads, and safety. Adequate clearance enables ventilation under panels, which reduces operating temperature and improves output, ...

[Get Price](#)

## Panel height off the roof?

Higher off the roof will tend to have better airflow and keep the panels cooler. Cooler panels will generate more, typically something like 0.4% per deg C. As long as you ...

[Get Price](#)

### **Solar Panel Roof Requirements: What You Need to ...**

However, if the pitch is right, roofs facing east or west can also work. The ideal roof pitch for solar panels is between 15 and 40 degrees. This ...

[Get Price](#)

### **How high should the rooftop solar panel be installed?**

Rooftop solar panels typically should be installed at a height of 3 to 4 feet from the roof surface, providing adequate clearance above the roof for maintenance and avoiding ...

[Get Price](#)

### **Panel height off the roof?**

Higher off the roof will tend to have better airflow and keep the panels cooler. Cooler panels will generate more, typically something like 0.4% ...

[Get Price](#)





## Solar Rooftop Design: The Ultimate Guide [2025]

Solar Rooftop Design: What Does That Mean? The process of designing and planning the positioning of solar panels on a rooftop is called solar rooftop design. The goal of ...

[Get Price](#)



## How High Should Photovoltaic Panels Be Installed on Your Roof?

A 2023 NREL study showed panels mounted 6-8 inches above rooftops produced 15% more energy in summer months through natural cooling. But here's the kicker: too much elevation ...

[Get Price](#)

## The Complete Guide To Rooftop Solar Mounting [2025]

They can be mounted on the actual roof, or on an above structure. To get the most out of solar panel installers, you can use a metal roof mount system, which comes in a wide ...

[Get Price](#)



## How high should the rooftop solar panel be installed?

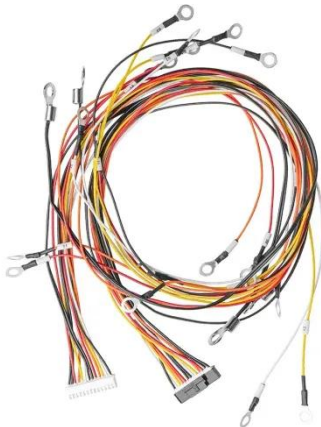
Rooftop solar panels typically should be installed at a height of 3 to 4 feet from the roof surface, providing adequate clearance above the roof for ...

[Get Price](#)


- ✓ 100KW/174KWh
- ✓ Parallel up-to 3sets
- ✓ IP Grade 54
- ✓ EMS AND BMS

## High Rise Elevated Solar Structure

The elevated design structure, also known as a high-rise design structure, improves solar efficiency while using less amount of roof space. Solar panels are placed at a height of 6 ...


[Get Price](#)


## The Importance of Walkways in Solar Panel Installations A Guide ...

Investing in a high-quality walkway system for your solar panel installation ensures that both the panels and maintenance personnel are well-protected. By offering safe and ...

[Get Price](#)

## Know your codes for solar mounting

PV mounting systems and devices:  
Devices and systems used for mounting PV modules that are also used to provide grounding of the module ...

[Get Price](#)

### High Rise Elevated Solar Structure

The elevated design structure, also known as a high-rise design structure, improves solar efficiency while using less amount of roof space. ...

[Get Price](#)

### The Ultimate Guide to Solar Panel Installation Regulations in the UK

For a domestic property, you will be looking at 2-3 days for solar panel installation. This will depend on the complexity of the project; this means the roof type, the number of ...

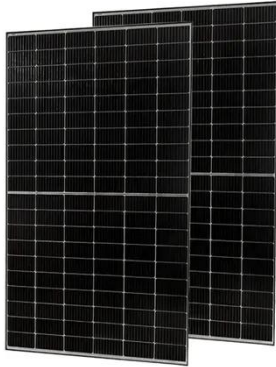
[Get Price](#)

### How High Off The Roof Should Solar Panels Be Mounted?

Solar panels should be mounted at a height of 3.75' to 5.25' from the roof's surface to ensure optimal performance. This measurement takes into account

the seam of the SSMR, typically ...

[Get Price](#)



---

## Structural Engineers Association of Utah

A minimum gap of 0.25 inches shall be provided between all panels, with the spacing of gaps between panels not exceeding 6.7 feet. In addition, the array shall be located ...

[Get Price](#)



---

## Violating Solar Panel Exclusion Zones: The ...

Conservative solar installers say no part of any solar panel shall ever encroach on a roof's exclusion zone. Pragmatic installers may differ.

[Get Price](#)



---

## Effect of Temperature on Solar Panel Efficiency ,Greentumble

The effect of temperature on PV solar panel efficiency Most of us would assume that the stronger and hotter the sun is, the more electricity our solar

panels will produce. But ...

[Get Price](#)



---

## Contact Us

For catalog requests, pricing, or partnerships, please visit:  
<https://www.barkingbubbles.co.za>