

## SolarInvert Energy Solutions

# How many base station power modules are needed



 **TAX FREE**    

### ENERGY STORAGE SYSTEM

**Product Model**  
HJ-ESS-215A(100KW/215KWh)  
HJ-ESS-115A(50KW 115KWh)

**Dimensions**  
1600\*1280\*2200mm  
1600\*1200\*2000mm

**Rated Battery Capacity**  
215KWH/115KWH

**Battery Cooling Method**  
Air Cooled/Liquid Cooled



## Overview

---

What are the components of a base station?

**Power Supply:** The power source provides the electrical energy to base station elements. It often features auxiliary power supply mechanisms that guarantee operation in case of lost or interrupted electricity, during blackouts. **Baseband Processor:** The baseband processor is responsible for the processing of the digital signals.

How much power does a cellular base station use?

This problem exists particularly among the mobile telephony towers in rural areas, that lack quality grid power supply. A cellular base station can use anywhere from 1 to 5 kW power per hour depending upon the number of transceivers attached to the base station, the age of cell towers, and energy needed for air conditioning.

Can solar energy be used in cellular base stations?

One obstacle of entry of solar energy to cellular base stations is an intensive power requirement of the current base stations. As a result, the electronic industry is exploring new methods to reduce the power requirements for the electronic equipment used in the base stations.

How to design a solar-powered base station?

In order to design and implement a solar-powered base station, PVSYST simulation software has been used in various countries including India, Nigeria, Morocco, and Sweden. This software allows for estimation of the number of PV panels, batteries, inverters, and cost of production of energy considering the geographical and other design parameters.

What type of generator does a base station use?

The air conditioning of the base station runs at 220 VAC. These base stations can be powered by two types of diesel generators. The first is the

conventional type where 220 VAC is converted to 48 VDC to charge the batteries and power the communication equipment.

What is the maximum output power requirement for BS?

There is no general maximum output power requirement for BSs. As mentioned in the discussion of BS classes in the preceding section, there is, however, a maximum output power limit of 38 dBm for medium range BSs, 24 dBm for local area BSs, and of 20 dBm for home BSs.

## How many base station power modules are needed

### ESS



### 5G Base Station Complexity Drives the Need for Low-EMI DC/DC Module

Existing 4G base stations can use up to four transmitter and four receiver elements per array (4x4 MIMO). In contrast, 5G is expected to use up to 64 transmitter and 64 receiver massive-MIMO ...

[Get Price](#)

### Immersive VR Experience: How Many Vive Base Stations Do You Need ...

Conclusion In conclusion, the number of Vive base stations needed for full-body tracking depends on the size of the play area and the type of experience you want to create. ...



[Get Price](#)



### A technical look at 5G energy consumption and performance

Figure 3: Base station power model. Parameters used for the evaluations with this cellular base station power model. Energy saving features of 5G New Radio The 5G NR ...

[Get Price](#)

## Power Base Station

Maximum base station power is limited to 24 dBm output power for Local Area base stations and to 20 dBm for Home base stations, counting the power over all antennas (up to four).

[Get Price](#)



## The power supply design considerations for 5G base stations

An integrated architecture reduces power consumption, which MTN Consulting estimates currently is about 5% to 6 % of opex. This percentage will increase significantly with ...

[Get Price](#)

## Powering your base in No Man's Sky Beyond

Base building in No Man's Sky Beyond has gotten a little more complicated. Beyond just creating your home among the stars, you now have ...

[Get Price](#)



## About the Wyze Base Station

This lets you connect up to four (4) Wyze Cam Outdoor cameras to your Base Station at home, then take the camera (s) to a remote location (as long as it's still plugged into ...

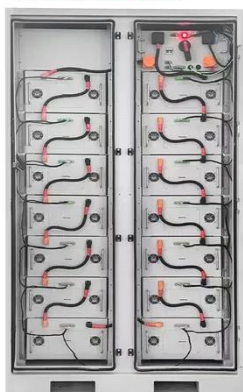

[Get Price](#)

## Powering 5G Infrastructure with Power Modules

Discover power module solutions for 5G infrastructure delivering high power density, efficiency, and reliability for base stations and small cell ...


[Get Price](#)

To Strive forward No Energy Waste



- ✓ All in one
- ✓ 100~215kWh High-capacity
- ✓ Intelligent Integration

## The Base Station in Wireless Communications: The ...

In each cell, one time slot is allocated to the information channel (BCCH) and one or two to the control channel (SDCCH). Access to the GSM ...

[Get Price](#)

## Selecting the Right Supplies for Powering 5G Base Stations

These tools simplify the task of selecting the right power management solutions for these devices and, thereby, provide an optimal power solution for 5G base

stations components.

[Get Price](#)



### Base Stations

Power consumption: Thus, permanent power supply is needed for the operation of base stations; energy consumption required to operate these ...

[Get Price](#)

### Size, weight, power, and heat affect 5G base station ...

Equipment providers must find the minimum power required to support radio functions during the quiescent period. PSU manufacturers must ...

[Get Price](#)



### Base Stations

Power consumption: Thus, permanent power supply is needed for the operation of base stations; energy consumption required to operate these facilities contributes significantly ...

[Get Price](#)

## How to configure modules for solar base stations

To configure modules for solar base stations, it is essential to comprehend the specific requirements of the station, the available solar ...

[Get Price](#)

## Powering 5G Infrastructure with Power Modules , RECOM

Discover power module solutions for 5G infrastructure delivering high power density, efficiency, and reliability for base stations and small cell deployments.

[Get Price](#)

## How to configure modules for solar base stations , NenPower

To configure modules for solar base stations, it is essential to comprehend the specific requirements of the station, the available solar technology, and the

installation ...

[Get Price](#)



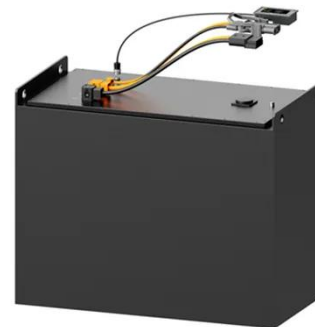
### HTC Vive: How many base stations do you need?

The base stations for your HTC Vive headset make your VR experience a more realistic and engaging one. But how many of those do you ...

[Get Price](#)

### Power requirements of different modules in a typical base station ...

Figure 8 shows an example of the breakdown of power requirements for different modules in a typical high-powered off-grid BS site (of about 2 kW) where the radio frequency, heating and/or



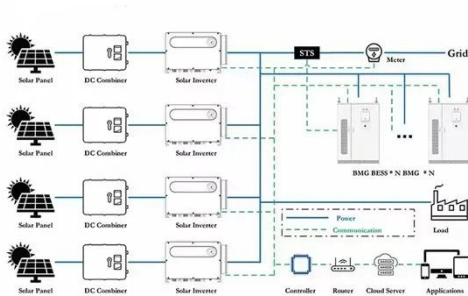
[Get Price](#)

### Selecting the Right Supplies for Powering 5G Base Stations

These tools simplify the task of selecting the right power management solutions for these devices and, thereby, provide

an optimal power solution for 5G base stations components.

[Get Price](#)



## 5G Base Station

The main energy consumption of 5G base stations is concentrated in the four parts of base station, transmission, power supply and computer ...

[Get Price](#)



## Power requirements of different modules in a typical ...

Figure 8 shows an example of the breakdown of power requirements for different modules in a typical high-powered off-grid BS site (of about 2 kW) where the ...

[Get Price](#)

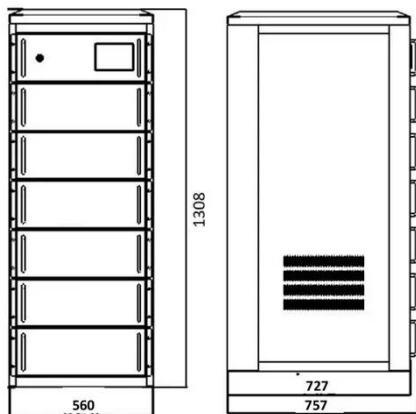


## Types of Base Stations

Base stations are one of the widely used components in the field of wireless communication and networks. It is an access point or base point of a ...

[Get Price](#)





## Size, weight, power, and heat affect 5G base station designs

Equipment providers must find the minimum power required to support radio functions during the quiescent period. PSU manufacturers must minimize power consumption ...

[Get Price](#)

## Front Line Data Study about 5G Power Consumption , ...

Facebook Twitter LinkedIn The two figures above show the actual power consumption test results of 5G base stations from different manufacturers, ...

[Get Price](#)



## Test and Measurement

Operators of cellular networks often need to reassure the local community that the total radiated power from a new cell site base station ...

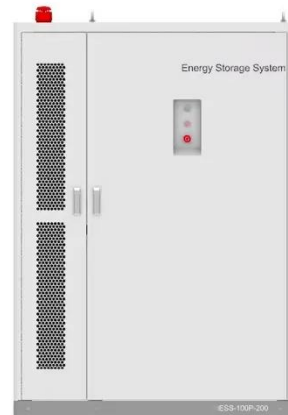
[Get Price](#)

## Power Consumption: 5G Basestations Are Hungry, Hungry Hippos

5G basestations are pushing up power requirements by three times, as MIMO and more digital circuitry require more

power.

[Get Price](#)



### 5G Base Station Complexity Drives the Need for Low ...

Existing 4G base stations can use up to four transmitter and four receiver elements per array (4x4 MIMO). In contrast, 5G is expected to use up to 64 ...

[Get Price](#)

### The power supply design considerations for 5G base ...

An integrated architecture reduces power consumption, which MTN Consulting estimates currently is about 5% to 6 % of opex. This percentage ...

[Get Price](#)



### MTS4L TETRA/LTE Base Station Specification Sheet

C-SCCH - additional control channels on the main The MTS4L can be installed as a TETRA only base carrier, quadrupling existing capacity. station, but it can



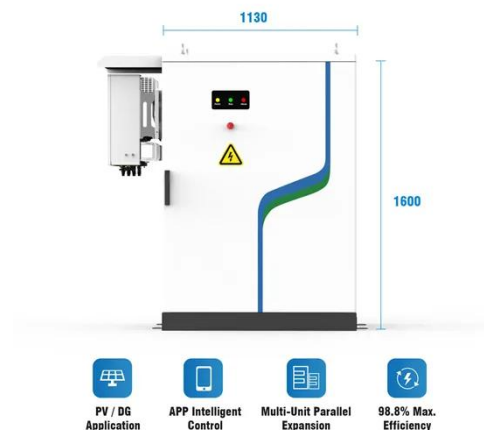
include the services for the ...

[Get Price](#)

## Which optical modules are commonly used in 4G base stations

In this blog, Nufiber will talk about 4G base stations and common types of optical modules. The base station can be divided into two modules: the RRU for transmitting signals ...

[Get Price](#)



## Lab

Production requirements Calculating the number of science packs needed per second is straightforward:  $E R S = (1 + B [r] 1 0 0) \times (1 + M [r] 1 0 0) \times B L S A C$   
 $T = T [r] E R \dots$

[Get Price](#)



## Contact Us

For catalog requests, pricing, or partnerships, please visit:  
<https://www.barkingbubbles.co.za>