

SolarInvert Energy Solutions

How many lithium battery packs can be connected in parallel



Overview

Here is a diagram for multiple lithium batteries in parallel. You can add individual battery switches after the fuses. From the main busbar, it can go to your inverter, charge controller, or generator. The negative cables can go to a busbar, then a shunt, then another busbar. If you have 3 batteries or less, you can.

The total battery bank must be at the same voltage. You must create a separate system for different voltages if you have different voltage.

The BMS is responsible for managing the charge and discharge process, keeping each cell within safe operating limits, preventing.

When you connect your batteries in parallel, they must have the same state of charge before connecting them. Because the voltage level of a LiFePO4 battery is flat in the middle, I.

A fuse for each battery can prevent excessive current from damaging the battery or creating a safety hazard. The overcurrent protection for the BMS is not enough. You need a.

You can connect multiple lithium batteries in parallel, and there is no strict limit on the number of batteries you can use. However, it is generally recommended to connect up to 4 to 6 batteries in parallel for optimal performance and safety. How many lithium batteries can be connected in parallel?

It recommends a maximum battery bank size of four lithium batteries of equal voltage and amperage. For example, you can connect two 200Ah lithium batteries in parallel. Invicta also allows up to 4 batteries in parallel. All Invicta lithium batteries can be configured into a parallel configuration, providing you meet the manufacturer's conditions.

Should lithium ion batteries be wired in series or parallel?

When wiring lithium-ion batteries in series, the voltage is changed which can damage equipment if not performed with caution and great understanding. In contrast, wiring lithium batteries in parallel keeps the voltage the same while

simply giving the batteries the ability to supply that same voltage level for longer.

What happens if you wire lithium batteries in parallel?

When wiring lithium batteries in parallel, the capacity (amp hours) and the current carrying capability (amps) are added, while the voltage remains the same. Because the voltage stays the same no matter how many batteries are added in parallel, little to no other precautions need to be considered.

Can enerdrive run lithium batteries in parallel?

Enerdrive supports running its B-TEC batteries lithium batteries in parallel. It recommends a maximum battery bank size of four lithium batteries of equal voltage and amperage. For example, you can connect two 200Ah lithium batteries in parallel. Invicta also allows up to 4 batteries in parallel.

How many batteries can be put in parallel?

Like individual cells, you can combine batteries together in parallel to achieve higher energy/power (amp-hours, amps). Up to two batteries can be put in parallel. To combine batteries in parallel, connect positive to positive and negative to negative as shown in Figure 4 right.

Can you mix different capacity lithium batteries?

Yes, you can mix different capacity lithium batteries, whether a normal 12V 100Ah battery or a Lithium server rack battery. You can combine different capacity batteries in parallel. You cannot combine different capacity batteries in series. There are a few points you need to consider when wiring in parallel. Let's explore these three points.

How many lithium battery packs can be connected in parallel



How to Connect Lithium Batteries in Series and Parallel?

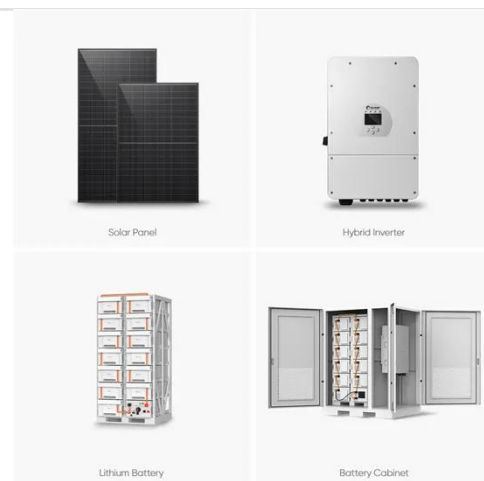
Lithium batteries power a wide range of devices, from smartphones to electric vehicles. Knowing how to connect these batteries in series, parallel, ...

[Get Price](#)

How Many LiFePO4 Batteries Can You Put in Parallel

LiFePO4 batteries, also known as lithium iron phosphate batteries, have gained significant popularity due to their inherent safety, long lifespan, and high ...

[Get Price](#)



Ultimate Guide of LiFePO4 Lithium Batteries in Series & Parallel

Unlock the ultimate guide to using LiFePO4 lithium batteries in series and parallel. Learn configurations, benefits, and tips for optimal performance!

[Get Price](#)

Wiring Batteries in Series vs. Parallel

The main difference between wiring batteries in series vs. parallel is the impact on the battery system's output voltage and capacity.

[Get Price](#)



1075KWHH ESS



How to Calculate the Number of Lithium Batteries in ...

Lithium Battery PACK Lithium battery PACK refers to the processing, assembly and packaging of lithium battery packs. The process of assembling lithium ...

[Get Price](#)

Understanding the Performance of Lithium Batteries in ...

Benefits of Lithium Batteries in Parallel Connection 1. Increased Capacity and Extended Runtime One of the primary advantages of parallel ...

[Get Price](#)



How To Wire Lithium Batteries In Parallel Increase ...

Wiring batteries in parallel is an extremely easy way to double, triple, or otherwise increase the capacity of a lithium battery. When wiring ...

[Get Price](#)


Connecting Lithium Batteries in Parallel and Series

Lithium battery pack technique refers to the processing, assembly and packaging of lithium battery pack. The process of assembling lithium cells together is called PACK, which can be a ...

[Get Price](#)


Connecting Lithium Batteries in Parallel: What You ...

Connecting your lithium batteries in parallel requires some preparation to ensure you don't do any expensive damage. Before you ...

[Get Price](#)

How to Balance Lithium Batteries with Parallel BMS?

By connecting two or more lithium batteries with the same voltage in parallel, the resulting battery pack retains the same nominal voltage but

boasts a higher Ah capacity. For ...

[Get Price](#)



Warranty
10 years

LiFePO₄

Intelligent BMS

Wide Temp:
-20°C to 55°C



Can You Mix Different Capacity Lithium Batteries?

A comprehensive guide to mixing different capacity lithium batteries. Dive into the crucial aspects of voltage, BMS, fuses, and more.

[Get Price](#)

BMS with multiple battery modules

My idea is to use 3000mah 3.7V 18650 cells, 30 cells in parallel in each pack X 7 packs for my 24V 4000/8000W Giandel Inverter. I will likely add more 30X7 packs in the ...

[Get Price](#)



Can You Safely Connect Two Lithium Batteries in Parallel?

Yes, you can connect two lithium batteries in parallel to increase capacity while maintaining voltage. Ensure both batteries have identical voltage,



capacity, and state of charge to prevent ...

[Get Price](#)

Lithium Series, Parallel and Series and Parallel

Connecting multiple lithium batteries into a string of batteries allows us to build a battery bank with the potential to operate at an increased voltage, or with increased capacity and runtime, or both.

[Get Price](#)



2MW / 5MWh
Customizable

batteries

Let's assume I am going to build a Li-ion battery pack with 12 18650s, where I connect four cells together in parallel and then the three sets of four in series. My understanding is that a BMS ...

[Get Price](#)

How to Balance Lithium Batteries in Parallel

If you are building a battery bank with multiple batteries in parallel getting and keeping them in balance is crucial to the overall health of the bank.

[Get Price](#)

Connecting Lithium Batteries in Parallel

Understanding Parallel Connection of Lithium Batteries What is Parallel Connection? Parallel connection involves connecting multiple lithium batteries ...

[Get Price](#)

Connecting Lithium Batteries in Parallel: What You Need to Know

Connecting your lithium batteries in parallel requires some preparation to ensure you don't do any expensive damage. Before you connect your batteries always consult the ...

[Get Price](#)

How many lithium batteries can I put in parallel?

How many lithium batteries can I put in parallel? You can connect multiple lithium batteries in parallel, and there is no strict limit on the number of batteries

you can use. ...

[Get Price](#)



How To Wire Lithium Batteries In Parallel Increase Amperage

Wiring batteries in parallel is an extremely easy way to double, triple, or otherwise increase the capacity of a lithium battery. When wiring lithium batteries in parallel, the capacity ...

[Get Price](#)



Everything About Lithium Battery Series & Parallel

Learn how to safely connect lithium batteries in series and parallel. Avoid risks, extend battery life and build reliable power systems with ...

[Get Price](#)

Batteries in Series and Parallel: Which is Better?

Explore the pros and cons of connecting batteries in series vs. connecting batteries in parallel. Learn which configuration best suits your power

needs for optimal battery performance.

[Get Price](#)



Cells Per Battery Calculator

The Cells Per Battery Calculator is a tool used to calculate the number of cells needed to create a battery pack with a specific voltage and ...

[Get Price](#)

How to Calculate the Number of Lithium Batteries in Series or Parallel

When to Connect Lithium Batteries in Series or Parallel? We all know that the series voltage of lithium batteries increases and the parallel capacity increases. So how to calculate how many ...

[Get Price](#)



How to Balance Lithium Batteries with Parallel BMS?

By connecting two or more lithium batteries with the same voltage in

parallel, the resulting battery pack retains the same nominal voltage but ...

[Get Price](#)



Lithium Battery Series & Parallel Operation , Fact Sheets

Up to two batteries can be put in parallel. To combine batteries in parallel, connect positive to positive and negative to negative as shown in Figure 4 right. It is important to use the same ...

[Get Price](#)



Can You Mix Different Capacity Lithium Batteries?

If you have 3 batteries or less, you can connect them to the shunt without needing an additional busbar. This is because you can only have a ...

[Get Price](#)

Contact Us

For catalog requests, pricing, or partnerships, please visit:
<https://www.barkingbubbles.co.za>