

## SolarInvert Energy Solutions

# How many strings are in a 48v 8ah lithium battery pack



## Overview

---

A typical 48V lithium battery contains 13 cells connected in series. Each cell provides around 3.7V, and the total voltage is achieved by multiplying this value by the cell count. This basic series configuration is standard for lithium-ion designs, ensuring stable voltage for various applications. How many cells are in a 48V lithium battery?

Therefore, for most cases involving a standard setup with no special requirements or constraints, you would find either thirteen or fourteen cells in a typical 48V lithium battery configuration.

How many cells does a 48v battery need?

Generally speaking, more cells are needed for higher capacity batteries as each cell contributes to overall capacity. For example, if each individual cell has a capacity of 2 ampere-hours (Ah), then a 48V battery with a total capacity requirement of 50 Ah would require approximately 25 cells (50 Ah / 2 Ah per cell).

How many lithium batteries can be connected in series?

Lithium battery pack 48V20AH generally single lithium battery is 3.5V, so 48V lithium battery pack needs  $48/3.5=13.7$ , just take 14 in series. If the manufacturer has provided a set of 12V lithium batteries, then 4 can be connected in series. As long as the output voltage is 48V, the current is 2A or 4A.

How many strings should a lithium battery have?

Therefore, the lithium battery must also be about 58v, so it must be 14 strings to 58.8v, 14 times 4.2, and the iron-lithium full charge is about 3.4v, it must be four strings of 12v, 48v must be 16 strings, and so on, 60v There must be 20 strings in parallel with the same model and the same capacity.

What is a 48 volt battery?

In simple terms, it refers to a rechargeable battery that operates at a voltage of 48 volts. These batteries are typically comprised of multiple individual cells connected in series. Each cell has an average nominal voltage of around 3.7 volts.

How many cells in a battery pack?

Step 3: Calculate the total number of cells: Total Cells = Number of Series Cells \* Number of Parallel Cells Total Cells =  $7 * 6 = 42$  cells So, you would need 42 cells in total to create a battery pack with 24V and 20Ah using cells with 3.7V and 3.5Ah. 1. Why do I need to connect cells in series for voltage?

## How many strings are in a 48v 8ah lithium battery pack

---



### Here is how to arrange the cells to make a battery pack

A 4S pack of LFP is the most common replacement for a 12V Lead-Acid battery pack ( $4P \times 3.2V = 12.8V$  nominal). That being said, NCA/NCM in the 18650-format cells have a much better ...

[Get Price](#)

### White Paper

Given a number of cells in a battery pack (such as 100 cells), they can be arranged as sets of cells directly in parallel, which are then connected in series (such as a 2P50S battery), or as ...

[Get Price](#)



### Battery Series and Parallel Connection Calculator

Battery Series and Parallel Connection Calculator Battery Voltage (V): Battery Capacity (Ah): Number of Batteries: Calculate Linking multiple batteries either in series or ...

[Get Price](#)

## How to Choose the Right Ah for 48V

## Li-ion Battery Pack?

A high-capacity pack might have several strings of 13 cells connected in parallel to boost ampere-hours without changing the overall 48V output. In short: More parallel groups = ...

[Get Price](#)



## Amazon.ca: 48v Battery Pack

Electric Bike Battery 48V 52V 13Ah 17.5Ah 20Ah Electric Bike Lithium Ion Battery Pack with Charger for 500W 750W 1000W 1500W Snow Fat Tire Bike Motor...

[Get Price](#)

## Lithium Battery Packs by the Numbers

Examples 8ah, 10ah, 13ah... This is the amount of stored energy in the battery pack. A 10ah battery can put out 10 amps (A) for 1 hour or 1a for 10 hours. Provided you have a good quality ...

[Get Price](#)



## 48V 20Ah Lithium Ion Battery

Lithium 48V Battery Pack- Lithium Iron Phosphate (LiFePO4) 20Ah High lifespan: two thousand cycles and more (see chart) Deep ...

[Get Price](#)



## 48V Lithium Batteries: Ultimate Guide

Discover the ultimate guide to 48V lithium batteries, their benefits, applications, selection tips, and future trends in battery technology.

[Get Price](#)



### How Many Cells Are in a 48V Battery? Configurations, Capacity, ...

A 48V battery typically has 16 cells. These cells are arranged in a layout of two series, with 8 cells in each series. This configuration provides a total voltage of 48 volts. This ...

[Get Price](#)

## Cells Per Battery Calculator

When designing a battery pack, cells can be connected in two ways: in series to increase voltage, or in parallel to increase capacity. Series ...

[Get Price](#)



### Understanding the Number of LiPo Cells Required for a 48V Battery

Each 18650 cell has a nominal voltage of 3.7V, so to assemble a 48V battery, you need 13 cells in series.

## DETAILS AND PACKAGING

[Get Price](#)


1 USER MANUAL PDF 2 RJ45 Cable For RS485/CAN 3 Battery in Parallel Cables  
4 RJ45 TO USB Monitor Cable 5 M8 Terminal\*4

## Calculate the number of series and parallel connections for lithium

In a lithium battery pack, multiple lithium batteries are connected in series to obtain the required operating voltage. If higher capacity and greater current are required, then ...


[Get Price](#)


## How Many Lithium-Ion Cells Are Needed for a 48V Battery?

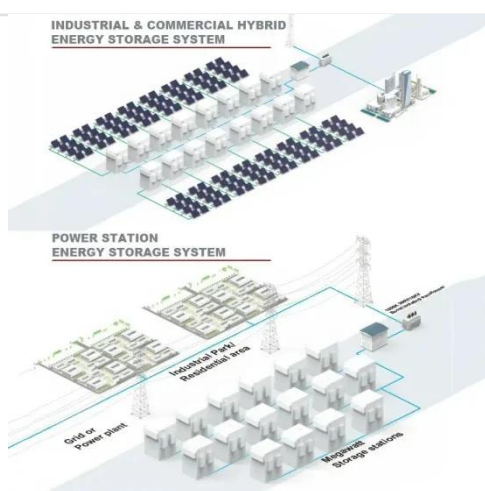
A standard 48V lithium-ion battery uses 13 cells in series. Each cell's nominal voltage is about 3.7V, so the total equals slightly above 48V, matching the requirements for ...

[Get Price](#)

## 48v Lithium Battery Pack

Explore a wide range of our 48V Lithium Battery Pack selection. Find top brands, exclusive offers, and unbeatable prices on eBay. Shop now for fast shipping and easy returns!



[Get Price](#)


### 48V lithium battery pack the difference between ternary lithium 13

Mar 24, 2021 48V lithium battery pack the difference between ternary lithium 13 string and 14 string For 48V battery packs, ternary lithium batteries generally use 13 strings or 14 strings, ...

[Get Price](#)

### Battery pack calculator : Capacity, C-rating, ampere, charge and

Battery calculator : calculation of battery pack capacity, c-rate, run-time, charge and discharge current Onlin free battery calculator for any kind of battery : lithium, Alkaline, LiPo, Li-ION, ...


[Get Price](#)

### 48V lithium battery pack the difference between ternary lithium 13

For 48V battery packs, ternary lithium batteries generally use 13 strings or 14



strings, and lithium iron phosphate batteries generally use 15 strings or 16 strings.

[Get Price](#)

---

### **How many strings are 48V20AH lithium battery packs? How to ...**

In the lithium battery pack, multiple lithium batteries are connected in series to obtain the required operating voltage. If what is needed is higher capacity and higher current, ...



[Get Price](#)



### **DIY 48V Ebike Battery: A Comprehensive Guide to Building Your ...**

Building Your DIY 48V Ebike Battery: Wiring and Connections Proper wiring and connections are essential for the safe and efficient operation of your DIY 48V ebike battery ...

[Get Price](#)

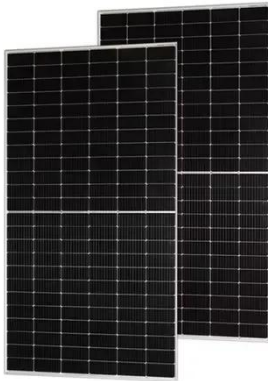
---

### **How many strings are 48V20AH lithium battery ...**

In the lithium battery pack, multiple lithium batteries are connected in series to obtain the required operating voltage.

If what is needed is higher ...

[Get Price](#)



### **I've noticed something about Greenworks. : r/Greenworks**

An 8Ah Greenworks 60v pack stores the same amount of energy as a 12Ah Ryobi pack. The 8Ah packs are physically longer than the smaller ones, but aside from lid clearance on mowers ...

[Get Price](#)

### **Cells Per Battery Calculator**

When designing a battery pack, cells can be connected in two ways: in series to increase voltage, or in parallel to increase capacity. Series connections add the voltages of ...

[Get Price](#)



### **How Many Cells in a 48V Lithium Battery?**

Battery Pack Design: The design may include multiple parallel strings of cells to achieve desired capacity while maintaining the same voltage. 48V



lithium batteries are widely ...

[Get Price](#)

## Battery Pack Calculator , Good Calculators

Use it to know the voltage, capacity, energy, and maximum discharge current of your battery packs, whether series- or parallel-connected. Using the battery pack calculator: Just complete ...



[Get Price](#)



## How many strings are suitable for a 48v lithium iron phosphate battery pack

How many cells are in a set of lithium iron phosphate batteries? The whole set of batteries is 14 strings multiplied by 10 cells = 140 cells. Summary: Series and parallel have their own ...

[Get Price](#)

## Amazon : 48 Volt Lithium Battery

Amazon : 48 volt lithium battery  
48V Lithium Battery Golf Cart, 48V 100AH  
Golf Cart Batteries with 58.4V 18A  
Charger and LCD Touch Monitor, Built-in

Smart 200A BMS and Bluetooth,Peak ...

[Get Price](#)



---

## Contact Us

For catalog requests, pricing, or partnerships, please visit:  
<https://www.barkingbubbles.co.za>