

## SolarInvert Energy Solutions

**How many times does the base station power off at a time**



## Overview

---

How many times a day should a base station be powered up?

If it depends on the usage, what is the estimated threshold (e.g. if the Base Stations are powered up 10 times a day it is better to keep them running instead). Please let me know if I can post your reply on Reddit to help other users as well. Thanks a lot! Steam Support response: Thanks for writing in with your questions.

Is it better to keep base stations running over stand-by/Sleep?

Is there actual data from the engineers whether it is better to keep the Base Stations running over stand-by/sleep?

If it depends on the usage, what is the estimated threshold (e.g. if the Base Stations are powered up 10 times a day it is better to keep them running instead).

How long should a base station last?

Base Stations should have a very long life span, even if the power management modes we offer are not used, however. Using the power management features will increase the life span further by leaving the laser and/or rotor disabled (depending upon the mode) when inactive. Feel free to share this if you like.

Should I Turn Off my base stations?

If you activate your base stations once a day or less, I would turn them off. If you often jump in and out of VR sessions, I'd keep them running. It's similar to HDD motors, as in they are happy to run continuously. But constant on/off can become a problem. Of course. Things don't wear down when they're off.

Why do base stations turn off every night?

This is due to the ramp up and down of the motors being turned off and on

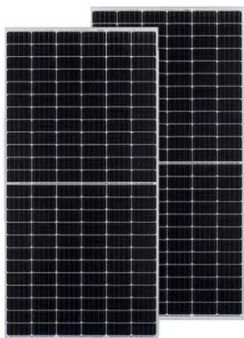
putting wear on the device. BUT. for ever 1 person whos base stations have been on for 2 years straight and been perfectly fine, there is also 1 person who has them hooked up to a smart switch and turns them physically off every night.

Do I need to unplug the base stations?

You don't need to unplug them, just use the steamvr base station settings to let steamvr turn off the base stations. It will also turn them on when launching steamvr. So I watched a YouTube video of a guy who's owned 3 Valve Indexes, 4 Base Stations, and 6 controllers.

## How many times does the base station power off at a time

---



### Technical Specifications for Ring Alarm Devices

Z-Wave range Ring uses Z-Wave technology to securely send signals between devices around your home and the Base Station. The range for Z-Wave communication is up to 250 feet ...

[Get Price](#)

### Portable Power Station How Long Does It Last?

3 days ago · Scenarios: How Long OUPES Stations Last in Real Life To understand how long a portable power station lasts, it's helpful to see examples of real-life usage scenarios. Here's ...



[Get Price](#)



### ?Base Station , SimpliSafe Support Home

How To Change The Base Station's Siren Volume The Base Station's siren has four volume settings: Off, Low, Medium, and High, and by default it is set to High.

[Get Price](#)

### Do base stations switch off automatically?

Seems like a simple question. If I switch off my computer and the vive headset but forget to switch off the base stations - what happens? Do the ...

[Get Price](#)



---

### **Power Consumption: 5G Basestations Are Hungry, Hungry Hippos**

5G basestations are pushing up power requirements by three times, as MIMO and more digital circuitry require more power.

[Get Price](#)

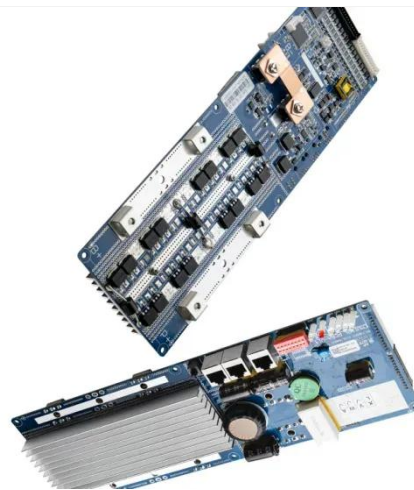


---

### **Base Stations Both not entering sleep mode :: Valve Index Base Station**

You either have to keep the Index connected or buy some Remote power sockets to turn off the Base Stations manually via remote. Steam highly recommends not doing this for ...

[Get Price](#)



---

### **Should I leave my Base Station on or turn them off?**

You don't need to unplug them, just use the steamvr base station settings to let steamvr turn off the base stations. It will

also turn them on when launching ...

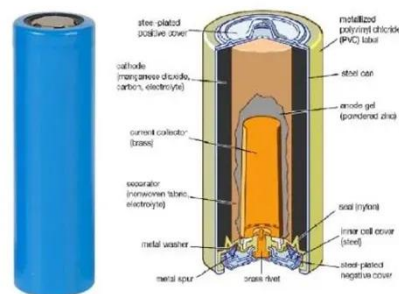
[Get Price](#)



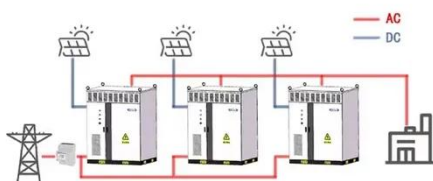
## How the Base battery works: A complete guide to grid ...

This guide covers everything you need to know about how your Base battery operates, protects your home, and supports the power grid. You'll also find ...

[Get Price](#)



### WORKING PRINCIPLE



## r/steelseries on Reddit: Is base station supposed to always be on

It doesn't turn off even though my PC is shut down and PS5 is in rest mode. Thought maybe it was because the PS5 was in rest mode instead of being off, but when I unplug the port ...

[Get Price](#)

## Generating electricity - WJEC Power stations

Nuclear power stations and coal-fired power stations usually produce the minimum level of electricity required by the National Grid over a period of 24

hours. This is called base load ...

[Get Price](#)



### **Base stations life span: Keep them running vs. sleep/stand-by**

Is there actual data from the engineers whether it is better to keep the Base Stations running over stand-by/sleep? If it depends on the usage, what is the estimated threshold (e.g. if the Base ...

[Get Price](#)

### **How long does your Base battery last during an outage?**

The estimated duration is based on your real time energy usage. You will also be able to see how much backup time your battery would provide if you reduced electricity usage.

[Get Price](#)



### **base station in 5g**

The base station in a 5G network is designed to provide high data rates, low latency, massive device connectivity, and improved energy ...

[Get Price](#)





## What is a Base Station?

The electromagnetic waves emitted by base stations and mobile phones are like air, filling us all around. Everyone knows mobile phones, ...

[Get Price](#)



## How Does the SteamVR Base Station 2.0 Work: A ...

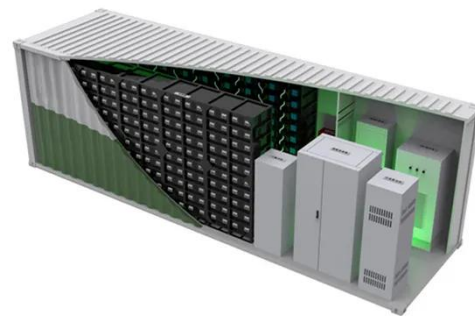
Understanding The Basic Components Of The SteamVR Base Station 2.0 The SteamVR Base Station 2.0 is a crucial component of the virtual reality (VR) system, providing ...

[Get Price](#)

## Astro A50 Base Station

Power cycle the Base Station - Disconnecting power for 30 seconds and then reconnecting often resolves temporary connection glitches. Update firmware - ...

[Get Price](#)



## About SteamVR Base Station 2.0

About SteamVR Base Station 2.0\* iFixit is an official partner of HTC and an authorized authentic parts seller. HTC makes no claims regarding any statements on external websites. Any



self ...

[Get Price](#)

## How the Base battery works: A complete guide to grid ...

This guide covers everything you need to know about how your Base battery operates, protects your home, and supports the power grid. You'll also find answers to common battery myths ...

[Get Price](#)



## 5G Base Station Deployments; Open-RAN ...

The total number of 5G base stations must be dozens of times more than that of 4G to achieve high-speed coverage. 02 Why does 5G need ...

[Get Price](#)



## Base stations life span: Keep them running vs. sleep/stand-by

Is there actual data from the engineers whether it is better to keep the Base Stations running over stand-by/sleep? If it depends on the usage, what is the

estimated ...

[Get Price](#)



### **Should I leave my Base Station on or turn them off? More in first**

You don't need to unplug them, just use the steamvr base station settings to let steamvr turn off the base stations. It will also turn them on when launching steamvr.

[Get Price](#)

### **Should I Keep My Base Stations Plugged In: Unveiling the Pros ...**

This article aims to explore the pros and cons of keeping base stations constantly powered, shedding light on the potential advantages and disadvantages of such a practice, ...

[Get Price](#)



### **Powering Your Base Efficiently in Dune Awakening: A Guide**

Powering your base in Dune Awakening is critical in order to keep it protected from players and the elements. Read on to find out which methods are most

efficient.

[Get Price](#)



## Base Stations Both not entering sleep mode :: Valve Index Base ...

You either have to keep the Index connected or buy some Remote power sockets to turn off the Base Stations manually via remote. Steam highly recommends not doing this for ...

[Get Price](#)



## Base station power off : r/ValveIndex

I checked with a watt checker and found that the HMD and BS each consumed about 3 watts of power during standby, so I switched off the outlet after standby. After waking the PC from ...

[Get Price](#)

## Do base stations switch off automatically?

Each rotor in a basestation rotates over 200,000 times per hour so it's definitely recommended to either use bluetooth power management or ...

[Get Price](#)


TILE ROOF SOLAR MOUNTING SYATEM



STANDING SEAM ROOF SYATEM



ADJUSTABLE TILT FLAT ROOF SYATEM



TRIANGLE FLAT ROOF SYATEM

### What does the error "Power Outage" mean? , SimpliSafe Support ...

In the event that you lose power, your Base Station has four (4) NiMH (nickel-metal hydride) rechargeable batteries that can keep your system powered for up to 24 hours. During this ...

[Get Price](#)

### Do base stations switch off automatically?

Each rotor in a basestation rotates over 200,000 times per hour so it's definitely recommended to either use bluetooth power management or unplug the devices when not in ...

[Get Price](#)


## Contact Us

For catalog requests, pricing, or partnerships, please visit:  
<https://www.barkingbubbles.co.za>