

SolarInvert Energy Solutions

How many watts can a 12A lithium battery power inverter



Overview

So I have made it easy for you, use the calculator below to calculate the battery size for 200 watt, 300 watt, 500 watt, 1000 watt, 2000 watt, 3000 watt, 5000-watt inverter.

How much power does a 12V inverter use?

For example: If you're running a 1500W inverter on your 12v battery with 1000 watts of total AC load. So your inverter will be consuming 83 amps (amps = watts/battery volts) from the battery for which you'll need a very thick cable. using a thin cable in this scenario can damage the inverter or you'll not be able to run your load.

How many watts in a 12 volt battery?

So if you have a 12v 100Ah lithium battery you can use all 1200 watts of power but if you have a lead-acid type then make it half (600 watts) Related Post: Amps To Watts Calculator: How Many Watts In A 12-volt Battery?

How long will an inverter last on a battery?

To calculate how long will an inverter last on a battery using this formula.

What is the recommended battery size for an inverter?

Interpreting Results: Once you input the required data, the calculator will generate the recommended battery size in ampere-hours (Ah). For instance, if your power consumption is 500 watts, the usage time is 4 hours, and the inverter efficiency is 90%, the calculator might suggest a battery size of approximately 222 Ah.

What is a lithium battery for inverter?

Lithium offers unmatched performance, a longer lifespan, and better efficiency than traditional batteries. Whether you're setting up a home backup system, solar power solution, or mobile energy unit, this guide will walk you through everything you need to know about lithium batteries for inverters.

Part 1.

Why should you use the calculate battery size for inverter calculator?

Using the Calculate Battery Size for Inverter Calculator can significantly streamline your power management process. This tool is particularly beneficial in scenarios where precise power estimation is critical, such as designing renewable energy systems, ensuring backup power in off-grid locations, or optimizing battery usage for cost efficiency.

How much power does a 2000 watt inverter take?

If you max out the inverter at 2000 watts, you are pulling 2000 watts /12 volts = 166.6 DC amps per hour. If you use a 200-amp 12-volt battery, you would divide the 200-amp battery / 166.6 amps = 1.2 hours of run time. This is if you plan on fully depleting the battery, which we DON'T recommend. We recommend 50% depth of discharge.

How many watts can a 12A lithium battery power inverter



Inverter Usage Calculator

To calculate the usage time of an inverter, multiply the battery capacity by 12 (to convert Ah to Wh assuming a 12V battery), then multiply by the inverter efficiency, and finally ...

[Get Price](#)

Calculate Battery Size for Inverter Calculator

Estimate the battery capacity required for your inverter based on power load, runtime, and efficiency. Using the Calculate Battery Size for Inverter Calculator can ...

[Get Price](#)



How Long Will A 12v Battery Last With An Inverter? Calculator

How many hours can a 12 volt battery run an inverter? As a simple rule, to calculate how long a 12v deep-cycle battery will last with an inverter multiply battery amp-hours (Ah) by ...

[Get Price](#)

How to Calculate Battery Size for Inverters of Any Size



Learn how many batteries for a 3000-watt inverter or a 1kVA inverter and more, right here at The Inverter Store. In order to size a battery bank, we take the hours needed to continuously run ...

[Get Price](#)



How Many Batteries For A 1000 Watt Inverter?

Discover the factors to consider when determining how many batteries you need for a 1,000W inverter, including battery capacity, voltage, ...

[Get Price](#)

How Long Will a 12V Battery Last with a 1500 Watt Inverter?

A 1500 watt inverter is going to last about 75 to 80 minutes on a 12V 150ah battery with a full load. How long the inverter lasts depends on how much load it carries, the battery capacity and the ...

[Get Price](#)

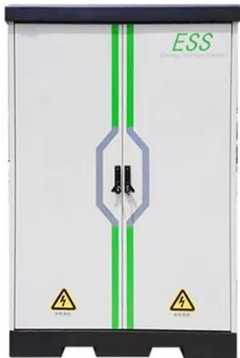


How Many Amps Does a 2000W Inverter Draw?

How Many Batteries Does a 2000W Inverter Need? To run a 2000W at maximum power, it requires 2 x 100ah deep cycle lithium batteries. We

recommend the ...

[Get Price](#)



Calculate Battery Size For Any Size Inverter (Using Our Calculator)

So I have made it easy for you, use the calculator below to calculate the battery size for 200 watt, 300 watt, 500 watt, 1000 watt, 2000 watt, 3000 watt, 5000-watt inverter

[Get Price](#)



Inverter Usage Calculator

To calculate the usage time of an inverter, multiply the battery capacity by 12 (to convert Ah to Wh assuming a 12V battery), then multiply by ...

[Get Price](#)

How Many 12V Batteries Do I Need for a 5000 Watt Inverter?

To power a 5000-watt inverter, you typically need four to six 12V batteries rated at 100Ah each, depending on the load and duration of use. This

configuration ensures that the ...

[Get Price](#)



Lithium Batteries: What Size Inverter Can I Use?

This type of lithium setup allows for much larger inverter installations, typically 2000w-5000+watts (subject to overall battery capacity installed of course.) ...

[Get Price](#)

What Size Battery Do I Need to Run a 2000W Inverter?

To run a 2000W inverter, you need to consider the appropriate battery size to ensure optimal performance and efficiency. Generally, for a 2000W inverter, a battery capacity of at least ...

[Get Price](#)



Understanding Battery Capacity and Inverter Compatibility

Inverter Efficiency: Lithium batteries generally work well with modern inverters, but checking the inverter's efficiency rating is advisable. Efficiency

SUPPORT REAL-TIME ONLINE
MONITORING OF SYSTEM STATUS



impacts the actual power ...

[Get Price](#)

Lithium Battery for Inverter: Pros, Specs, and Tips

Whether you're setting up a home backup system, solar power solution, or mobile energy unit, this guide will walk you through everything you need to know about lithium ...

[Get Price](#)



1500-watt power inverter: Batteries Required with Runtime

How many batteries are needed for a 1500-watt power inverter, and how many appliances can it run efficiently without requiring much tension? In this guide, We will show ...

[Get Price](#)

What Will An Inverter Run & For How Long? (With Calculator)

So I'm gonna explain to you guys in simple words about what you can run on your any size inverter and what are the key point to keep in mind. And also how

long your inverter ...

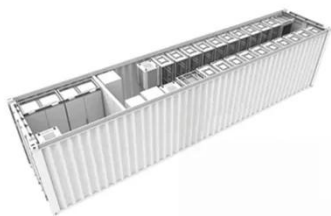
[Get Price](#)



 **TAX FREE**

1-3MWh

BESS



How Many Batteries for a 3000 watt Inverter?

Lead-acid batteries have a C-rate of 0.2C, while lithium (LiFePO4) batteries have a higher C-rate of 1C. To manage current and cable size, adjust ...

[Get Price](#)

Lithium Battery for Inverter: Pros, Specs, and Tips

Whether you're setting up a home backup system, solar power solution, or mobile energy unit, this guide will walk you through everything you ...

[Get Price](#)



Sizing the Right Inverter for 100ah Battery

Yes, you can use a 2000 watt inverter with a 100ah battery. But if you use 2000 watts from your 12v 100ah battery, it will use up the battery ...


[Get Price](#)

Lithium Batteries: What Size Inverter Can I Use?

This type of lithium setup allows for much larger inverter installations, typically 2000w-5000+ watts (subject to overall battery capacity installed of course.) Now let's take the 12v ePOWER B ...


[Get Price](#)


How Many Batteries Do I Need For a 1000 Watt Inverter?

A 1000 watt inverter requires sufficient battery power to run. Discover how many batteries you will really need to use.

[Get Price](#)

Understanding Battery Capacity and Inverter Compatibility

Inverter Efficiency: Lithium batteries generally work well with modern inverters, but checking the inverter's

efficiency rating is advisable. Efficiency impacts the actual power ...

[Get Price](#)



Calculator

Battery Capacity (Ah Ratings) =
Required Backup Time (Hours)*Total
Load (Watts) / Input Voltage (12 Volts)
For example, lets calculate the Battery
Capacity with above Load ...

[Get Price](#)

Batteries for a 3000 Watt Inverter: A Complete Guide

An inverter is simply a device used to convert the DC battery power into AC electricity for your electronics. But don't worry, we can easily work out how long your 3000 watt inverter will run. ...

[Get Price](#)



How Long Can a Lithium Ion Battery Power an Inverter?

When we talk about lithium ion batteries used in those inverter setups, the DoD makes a real difference in two main ways: first, how much actual power is

available when ...

[Get Price](#)



Why Is It Important to Match Inverter Size to a 200Ah Lithium Battery

Wholesale lithium golf cart batteries with 10-year life? Check here. To determine the correct inverter size for a 200Ah lithium battery, you first need to calculate your total power ...

[Get Price](#)



How Many Batteries Do I Need For a 1000 Watt Inverter

It depends on several factors to determine how many batteries are needed to power a 1000 watt inverter, such as: battery capacity, battery ...

[Get Price](#)



Contact Us

For catalog requests, pricing, or partnerships, please visit:
<https://www.barkingbubbles.co.za>