

SolarInvert Energy Solutions

How many watts does a 40A solar panel require



Overview

How many watts can a 40 amp solar controller handle?

Generally, a 40-amp solar controller can handle up to around 480 watts of solar panels. This is because the current and voltage of the solar panels must be balanced to ensure that the system operates efficiently and safely. If the solar panels are rated at a higher voltage, a 40-amp solar controller can handle more watts.

How many watts of solar panels do I Need?

You need around 800-1000 watts of solar panels to charge most of the 48V lead-acid batteries from 50% depth of discharge in 6 peak sun hours with an MPPT charge controller. You need around 1600-2000 watts of solar panels to charge most of the 48V lithium batteries from 100% depth of discharge in 6 peak sun hours with an MPPT charge controller.

How many watts a solar panel to charge a battery?

You need around 360 watts of solar panels to charge a 12V 100ah Lithium (LiFePO4) battery from 100% depth of discharge in 4 peak sun hours with an MPPT charge controller. What Size Solar Panel To Charge 50Ah Battery?

.

How many watts can a 40A charge controller handle?

Therefore, a 40A charge controller can handle a maximum of 480 watts of solar panels at 12 volts. However, if the battery bank is a different voltage, the maximum wattage the charge controller can handle would be different. You would need to use the appropriate voltage in the calculation.

How many solar panels do I need to charge a 50Ah battery?

You need around 180 watts of solar panels to charge a 12V 50ah Lithium (LiFePO4) battery from 100% depth of discharge in 4 peak sun hours with an

MPPT charge controller. Related Post: [How Long Will A 50Ah Battery Last?](#)

.

How many watts a solar panel to charge 130ah battery?

You need around 380 watts of solar panels to charge a 12V 130ah Lithium (LiFePO4) battery from 100% depth in 5 peak sun hours with an MPPT charge controller. [What Size Solar Panel To Charge 140Ah Battery?](#)

How many watts does a 40A solar panel require



Solar Panel Wattage Explained: How Many Watts Do You Need?

Confused about solar panel wattage? Learn how many watts you need, how solar output works, and how to calculate the right solar setup for your home, RV, or cabin.

[Get Price](#)

How To Size A Solar Inverter in 3 Easy Steps

After solar panels, the inverter is the most critical component of a solar system. But how big should your inverter be? In this guide, we share 3 easy steps on ...



[Get Price](#)



how many panels to a 40 amp mppt controller

245W times four is about 980 watts. 980W divided by 12 is 81A. That is more than 40A. So two panels max. Most PWM CCs do not allow you ...

[Get Price](#)

MPPT wattage limits: Do I need a 40A or 60A charge controller

3 panels in series for 90volts Make sure you are using Voc to calculate the maximum voltage the controller will see, not Vmp. Also keep in mind that the voltage goes up in colder weather. In ...

[Get Price](#)



How to charge solar 40a , NenPower

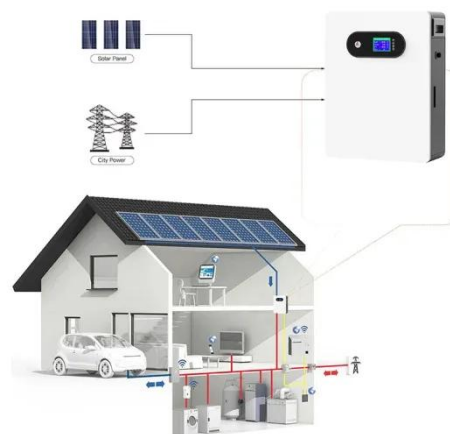
For instance, if one anticipates a daily generation of 1800 watt-hours from the solar array, one would need to consider how many amp-hours ...

[Get Price](#)

Solar Panel Wattage per Charge Controller

I've read the specs on a lot of charge controllers and they seem strict with how many watts of solar panels can be connected to them. I have a 40 amp Renogy running a 12V ...

[Get Price](#)



How Many Watts a 40 Amp Solar Controller Can Handle

Discover the capacity of a 40 Amp solar controller, including how many watts it can effectively manage for your solar setup.

[Get Price](#)


Solar Panel Wattage Calculator

How Many Watts is a 400W Solar Panel?
A 400-watt solar panel is rated to produce 400 watts of power under ideal standard test conditions. In practical scenarios, the actual output may vary ...

[Get Price](#)


Solar panel Watts to Amps?

40 Amps x 13 Volts = 520 Watts. This suggests that a 40 Amp MPPT charge controller can handle 520 Watts of solar panels. 500 Watts / 100 Watts per panel = 5 (100 ...

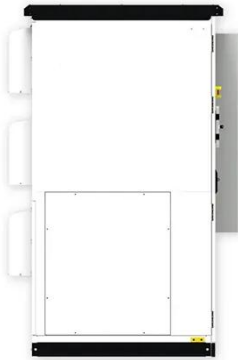
[Get Price](#)

Maximum watt Input on controller , DIY Solar Power Forum

How many watts in my panel solar array in parallel should I put in to this controller to make it work the best with my 12v set up. IE how many panels at

how many watts.

[Get Price](#)



Solar Panel Size Calculator

You need around 550 watts of solar panels to charge a 12V 150ah Lithium (LiFePO4) battery from 100% depth of discharge in 4 peak sun hours ...

[Get Price](#)

How many watts of solar panels are needed for a 40a ...

In summary, determining the wattage of solar panels needed for a 40A battery involves intricate calculations and thoughtful consideration of ...

[Get Price](#)



What Happens if Your Solar Charge Controller is Too Small?

The Topsolar Solar Panel Kit for example, includes a 100 watt solar panel and a 20A 12V/2V charge controller. No need to figure out what controller size to use

since it is already included. ...

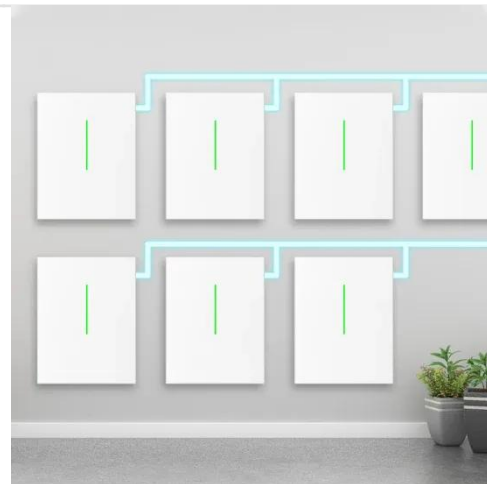
[Get Price](#)



Solar Panel Sizes and Wattage Explained

Additionally, you can compare pricing, brands and options by viewing solar kit sizes. Remember that you decide how many solar panels to ...

[Get Price](#)



Standard 20ft containers



Standard 40ft containers

Solar Panel Wattage Calculator

This solar panel wattage calculator allows you to calculate the recommended solar panel wattage according to the energy consumption of your household appliances. If you want ...

[Get Price](#)

How many watts of solar panels are needed for a 40a battery

In summary, determining the wattage of solar panels needed for a 40A battery involves intricate calculations and thoughtful consideration of various

factors, ensuring ...

[Get Price](#)



how many panels to a 40 amp mppt controller

245W times four is about 980 watts. 980W divided by 12 is 81A. That is more than 40A. So two panels max. Most PWM CCs do not allow you to have too high an input power ...

[Get Price](#)

What Size Breaker For Solar Panels? [Updated: September 2025]

When it comes to solar panels, you want to make sure you have the right size breaker. A 30-amp fuse is necessary for each panel when the panels are connected in ...

[Get Price](#)



Solar Panel Wattage Calculator

How Many Watts Does a 100 Watt Solar Panel Produce in a Day? The daily energy production of a 100-watt solar panel is influenced by the amount of ...

114KWh ESS

[Get Price](#)



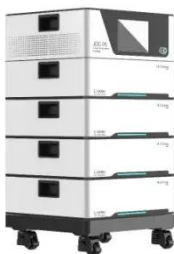
ISO 9001 ISO 14001 PICC RoHS CE MSDS UN38.3 UK CA TEC

How to Calculate Solar Panel, Inverter, Battery ...

Solar Panel, Inverter & Battery Calculator
This calculator determines the required solar panel wattage, inverter size, and battery ...



[Get Price](#)



How many watts does a 40a solar panel have? , NenPower

When analyzing how many watts a 40a solar panel can effectively generate, one must consider the voltage it operates at. Most solar panels with a high amp rating, such as 40 ...

[Get Price](#)

Solar Panel Size Calculator

You need around 550 watts of solar panels to charge a 12V 150ah Lithium (LiFePO4) battery from 100% depth of discharge in 4 peak sun hours with an MPPT charge ...

[Get Price](#)



Confused about how much solar I can use

I bought a Renogy Rover Elite, 20 amp, MPPT solar charge controller. The manual shows: Max solar input voltage is 100VDC. Max solar input power is 12v @



260w - 24v @ ...

[Get Price](#)

Solar Panel Wattage Explained: How Many Watts Do ...

Confused about solar panel wattage? Learn how many watts you need, how solar output works, and how to calculate the right solar setup for ...

[Get Price](#)



Solar Panel Calculator: How Many Do You Need?

Any solar powered system starts with one essential step: calculating how many solar panels you need. If you get the wattage or number ...

[Get Price](#)

Solar Panel Wattage Calculator

This solar panel wattage calculator allows you to calculate the recommended solar panel wattage according to the energy consumption of ...

[Get Price](#)

Need help with Epever solar controller

I bought a epevers solar controller its a tracer 4210AN MPPT 40amp I am confused about if it will handle my new Rv solar panel array i'm planning on using. I bought ...

[Get Price](#)

Do I need a 30A or 40A SCC? Calculators disagree .

Add up the total watts of solar panels and divide by either 14.4 for 12-volt systems 28.8 for 24 volts or 58.8 for 48-volt battery banks. This will give you maximum output amps ...

[Get Price](#)

How Many Watts Can A 40 Amp Solar Controller Handle?

Add up the total watts of solar panels and divide by either 14.4 for 12-volt systems 28.8 for 24 volts or 58.8 for 48-volt battery banks. This will give you

maximum output amps ...

[Get Price](#)



How Many Watts Can A 40 Amp Solar Controller Handle?

Generally, a 40-amp solar controller can handle up to around 480 watts of solar panels. This is because the current and voltage of the solar panels must be balanced to ensure that the ...

[Get Price](#)



Solar Panel Wattage Calculator

How Many Watts is a 400W Solar Panel? A 400-watt solar panel is rated to produce 400 watts of power under ideal standard test conditions. In practical ...

[Get Price](#)



Contact Us

For catalog requests, pricing, or partnerships, please visit:
<https://www.barkingbubbles.co.za>