

SolarInvert Energy Solutions

How many watts does a super small inverter have



Overview

Before we go any further, we highly recommend that you choose a pure sine wave inverter. This type of inverter delivers high-quality electricity, similar to your utility company. This way, none of your appliances run the risk of being damaged. Now, when it comes to sizing your inverter, you always need to check.

We have summarized the appliances that inverters from 300W to 3000W can run depending on their rated maximum power. Note to our readers: Use the above formula to determine.

In general, a 3000W to 5000W inverter works well for most homes, but the exact size depends on factors like household appliances, total power consumption, and battery setup. In this guide, we'll explain how to calculate the right inverter size for home backup power and even for solar power systems. What are the different solar inverter sizes?

Solar generators range in size from small generators for short camping trips to large off-grid power systems for a boat or house. Consequently, inverter sizes vary greatly. During our research, we discovered that most inverters range in size from 300 watts up to over 3000 watts. In this article, we guide you through the different inverter sizes.

How to size an inverter?

If you want to know how to size an inverter, the answer is simple. All you have to do is find out how much power your devices need. Then, do some simple math to determine how much more power you need to compensate for inverter losses and headroom.

How many watts is a power inverter?

Since Power inverters provide two types of ratings (both in watts), it could be confusing at times. Basically, what you are looking for is 300 watts of continuous power.

How many watts a solar inverter do I Need?

A 200 watt portable unit such as the NDDI Direct Power Inverter will be sufficient for that. if you are going to run an air conditioner or a refrigerator in your RV, a more powerful inverter and battery are required. Ready to size your solar system the smart way?

.

What can a 1000 watt power inverter power?

You can use a 1000-watt power inverter to power small appliances like a microwave to some power tools that will not require more than this amount when used at the same time. They are generally used in Recreational Vehicles (RVs), campers, trucks, boats, and as a part of a small solar setup.

How to size a 1500 watt power inverter?

A rule-of-thumb for sizing your 1500-watt power inverter is to combine the wattage of all the devices you are planning to use at the same time (don't forget basic necessities, like lights) and give yourself 20% headroom.

How many watts does a super small inverter have



Generator Wattage Chart & Sizing Guide [2023 ...

Are you searching for the wattage needs of your electrical appliances to help you determine the power requirements of your generator? ...

[Get Price](#)

What Size Inverter do I Need? [with Examples]

With a 600-watt inverter, you will be able to enjoy a cup of coffee with toast in the morning while camping! 600-watts may not sound like much, but it easily powers small to medium size ...



**2MW / 5MWh
Customizable**

[Get Price](#)



Generator Size Calculator: Know Your Ideal Generator Size

Small inverter generators (1,000-2,000 watts): Extremely portable and quiet, perfect for camping or powering small RV appliances. Larger models (3,000-4,000 watts): Can ...

[Get Price](#)

What Size Inverter You Need (Calculations + Battery)

Inverters are made with different power capacities, depending on the size of the system you want to run. For this discussion, we are looking at a ...

[Get Price](#)



How Many Watts Does a Mini Split Use?

110/120 volt mini splits are small - up to 12,000 BTU. However, any size mini split can use 208/230 volts. Got amps? You can also determine the watts needed to power your ...

[Get Price](#)

Inverter Specifications and Data Sheet

The article provides an overview of inverter functions, key specifications, and common features found in inverter systems, along with an example of power ...

[Get Price](#)



How Many Watt Inverter Do I Need? , Click to Learn More

Introduction Selecting the accurate solar inverter size is extremely important if you want your electrical appliances should function properly without over-

loading the machine. ...

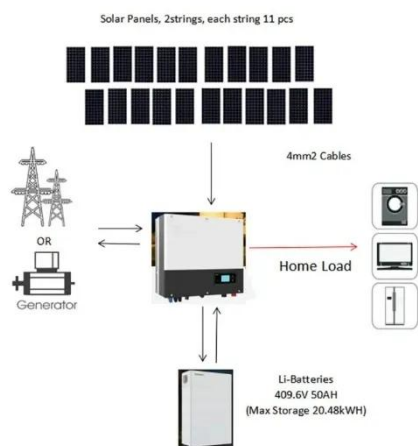
[Get Price](#)



How Many Watts Does an Inverter Refrigerator Use: A Closer ...

An inverter refrigerator is a popular appliance that helps us keep our food fresh and cool. However, one question that often arises is, "How many watts does an inverter ...

[Get Price](#)



The Only Inverter Size Chart You'll Ever Need

During our research, we discovered that most inverters range in size from 300 watts up to over 3000 watts. In this article, we guide you through the different inverter sizes.

[Get Price](#)

Solar Inverter Size Chart

A 3000 watt inverter provides 3000 watts of continuous nonstop power. As long as your devices don't exceed 300 watts, the inverter will have no problem running them at the same time.

[Get Price](#)

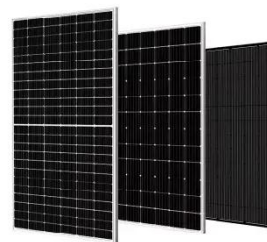
What Size Inverter To Run A Circular Saw

How Many Watt Inverter Do I Need to Run a Circular Saw? If you are planning on running a circular saw off of an inverter, you will need to make sure that the inverter is rated for at least ...

[Get Price](#)

What Size Power Inverter Is Needed for a House [Full Guide]

In general, a 3000W to 5000W inverter works well for most homes, but the exact size depends on factors like household appliances, total power consumption, and battery ...

[Get Price](#)

What Size Inverter You Need (Calculations + Battery)

Inverters are made with different power capacities, depending on the size of the system you want to run. For this discussion, we are looking at a domestic



inverter that you can ...

[Get Price](#)

What Size Inverter Do I Need?

Finding the proper inverter size for your needs is as simple as adding together the necessary wattages of the items that you're looking to power.

[Get Price](#)



What Size Power Inverter Is Needed for a House [Full ...

In general, a 3000W to 5000W inverter works well for most homes, but the exact size depends on factors like household appliances, total power ...

[Get Price](#)

How To Size An Inverter for Solar and Off Grid

So if you have a load that draws 500 watts, without considering inverter losses or overhead, you would need an inverter that can continuously ...

[Get Price](#)

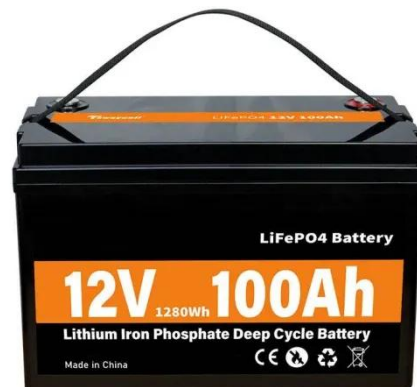
What Will An Inverter Run & For How Long? (With ...

I saw on many forums that most people are confused about what they can run on their 1000,1500,2000,3000, & 5000-watt inverter and how long ...

[Get Price](#)

How To Size An Inverter for Solar and Off Grid

So if you have a load that draws 500 watts, without considering inverter losses or overhead, you would need an inverter that can continuously supply 500 watts. A smaller ...

[Get Price](#)

What Size Inverter do I Need? [with Examples]

With a 600-watt inverter, you will be able to enjoy a cup of coffee with toast in the morning while camping! 600-watts may not sound like much, but it easily ...

[Get Price](#)

Sizing Your Charge Controller & Inverter

For example, if you're considering a small backup system for grid outages, and want to power a 400 W refrigerator, a 500 W deep freezer, a 500 W hot plate,

...

[Get Price](#)

How To Size A Solar Inverter in 3 Easy Steps

Most homes have an average daily consumption of between 9 to 20 kW. Depending on where they fall in that band and the size of their solar array, they will likely use a 3, 5, or 10kW ...

[Get Price](#)

How To Size A Solar Inverter in 3 Easy Steps

Most homes have an average daily consumption of between 9 to 20 kW. Depending on where they fall in that band and the size of their solar array, ...

[Get Price](#)

Inverter Size Calculator

Learn how to calculate the required size of an inverter with our in-depth guide. We provide a handy formula, examples, and answers to common questions to help you make the right ...

[Get Price](#)

Inverter Size Chat: What Size Inverter Do I Need?

To find out your size, you just need to add together the total wattage of the appliances you wish to run. For example, TV (60W), coffee maker (700W), ...

[Get Price](#)

How Much Power an Inverter Draws with No Load

It will be either no load current draw (amps) or no load power (watts), they mean the same thing. To find out how much power an inverter draws without



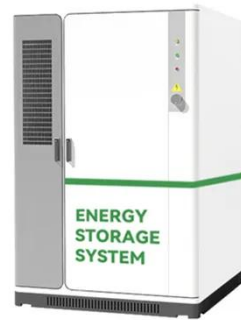
any load, multiply the battery voltage by ...

[Get Price](#)

How to size an inverter that can run your air conditioner?

For example, the equivalent of 3000VA is 2400 Watts. In any case, the Continuous Power rating of the inverter you choose should be higher than ...

[Get Price](#)



Inverter Size Chat: What Size Inverter Do I Need?

To find out your size, you just need to add together the total wattage of the appliances you wish to run. For example, TV (60W), coffee maker (700W), lamp (60W), phone (5W). So add together ...

[Get Price](#)

What Size Generator Do I Need? (With Easy To Use ...

What size generator do you need to power your home? Find out with our easy to use generator wattage calculator.

[Get Price](#)

How Many Inverters Do I Need? (What You Need)

Power inverters are essential in a PV system for converting DC-generated power to AC usable power. Since they can be expensive, read on ...

[Get Price](#)

Contact Us

For catalog requests, pricing, or partnerships, please visit:
<https://www.barkingbubbles.co.za>