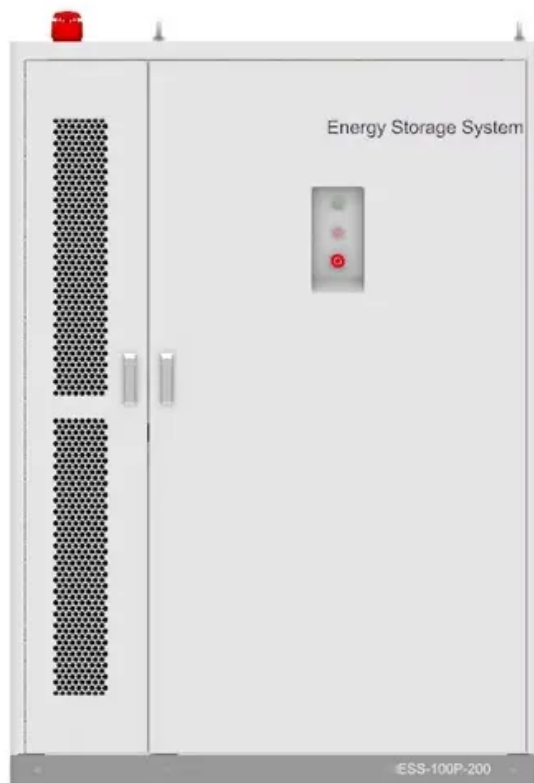


SolarInvert Energy Solutions

How many watts does an outdoor power supply have per kilowatt-hour



Overview

It's one kilowatt of power (1000 watts) used for one hour. It's abbreviated as kWh. It's not the number of kilowatts you're using in an hour, even though that seems to make sense. Think of it as the amount of energy you would use by keeping a 1,000 watt appliance running for one hour. How many kilowatts are in a kWh?

A kilowatt (kW) is 1,000 watts and is a measure of how much power something needs to run. In metric, 1,000 = kilo, so 1,000 watts equals a kilowatt. A kilowatt hour (kWh) is a measure of the amount of energy something uses over time. A kilowatt (kW) is the amount of power something needs just to turn it on.

How much does electricity cost per kWh?

Try our electricity cost calculator to estimate the cost of power usage on your monthly bill. Common watts to kilowatt-hour conversions for a 1-hour time period, along with the estimated cost of electricity, assuming a price of \$0.12 per kWh. To convert energy to watts, use our kWh to watts conversion calculator.

How much does 40 watts / 1000 kWh cost?

$40 \text{ watts} / 1,000 \times 12 \text{ hours} \times \$0.15/\text{kWh} = \$0.072$ This electricity cost calculator works out how much electricity a particular electrical appliance will use and how much it will cost. This calculator is a great way of cutting back on your energy use and saving on your electricity bills.

What is a kilowatt hour?

A kilowatt hour (kWh) is the amount of power that device will use over the course of an hour. Here's an example: If you have a 1,000 watt drill, it takes 1,000 watts (or one kW) to make it work. If you run that drill for one hour, you'll have used up one kilowatt of energy for that hour, or one kWh. What Can 1 Kilowatt-Hour Power?

.

How do you calculate energy in kilowatt hours?

The energy E in kilowatt-hours is equal to the power P consumed in watts times the time T in hours, divided by 1,000. For example: let's find the kWh of 1,500 watts for 2.5 hours. Thus, the energy in kilowatt hours for a 1,500 power consumption over 2.5 hours is equal to 3.75 kilowatt-hours.

What is the difference between Watts and kilowatts?

Watts (W) is a unit of power used to quantify the rate of energy transfer. It is defined as 1 joule per second. A kilowatt is a multiple of a watt. One kilowatt (kW) is equal to 1,000 watts. Both watts and kilowatts are SI units of power and are the most common units of power used. Kilowatt-hours (kWh) are a unit of energy.

How many watts does an outdoor power supply have per kilowatt-h



Electricity Calculator

One kilowatt (kW) is equal to 1,000 watts. Both watts and kilowatts are SI units of power and are the most common units of power used. Kilowatt-hours (kWh) are a unit of energy. One kilowatt ...

[Get Price](#)

How Many Watts Does A Fan Use? [Per Hour And ...

Most of us use it for hours on end during the summer days. You may be wondering, how much wattage does a fan use per hour or per day? ...

[Get Price](#)



How much power does my PC use?

High power usage drives up heat, impacts the efficiency of your cooling solution and your components, and puts more stress on your power ...

[Get Price](#)

Electricity Cost Calculator , Good Calculators

This electricity cost calculator works out how much electricity a particular electrical appliance will use and how much it will cost. This calculator is a great way of cutting back on your energy ...

[Get Price](#)



Floodlight Energy Calculator (Cost and kWh Usage)

This means that if you leave your floodlights on for 10 hours a day, the energy consumption would be 10,000 watts or 10 kWh (kilowatt-hours) per day. If you use your floodlights every day, you ...

[Get Price](#)

What is a Kilowatt-hour (kWh) and What Can It Power?

One kilowatt (kW) is equal to 1,000 watts. Both watts and kilowatts are SI units of power and are the most common units of power used. Kilowatt-hours (kWh) are a unit of energy. One kilowatt ...

[Get Price](#)



Electricity Cost Calculator: Hourly to Yearly Estimates

Calculate electricity usage and cost in watt-hours, kilowatt-hours, or megawatt-



hours using device wattage and your electricity rate per kWh.

[Get Price](#)

What is a Kilowatt-hour (kWh) and What Can It Power?

It's one kilowatt of power (1000 watts) used for one hour. It's abbreviated as kWh. It's not the number of kilowatts you're using in an hour, even though that seems to make sense. Think of it ...



[Get Price](#)



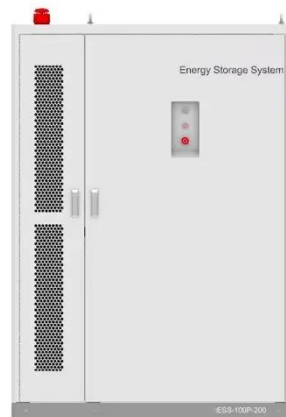
Power Consumption Calculator: How To Calculate ...

On a specification sheet, you will find power or wattage (expressed in Watts). The power consumption calculator above calculates how many kWh a certain ...

[Get Price](#)

Electricity Cost Calculator

Let's say you want to calculate the cost of running a 1500-watt space heater for 6 hours daily. Electricity cost calculator would help you determine both daily and monthly costs based on ...

[Get Price](#)

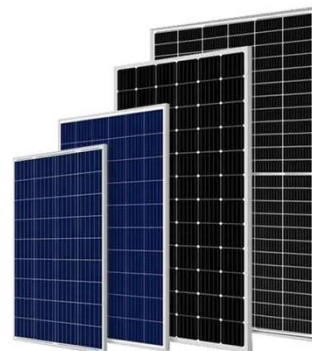
LED Light Bulb Energy Calculator: Watts and kWh

Hours used per day Enter how many hours per day you estimate you run your LED Light Bulb. If it is less than one hour use a decimal. For example, 30 minutes would be .5 and 15 minutes ...

[Get Price](#)

kW vs. kWh: How much energy is my lighting using?

There's one common thread that runs through each of these questions: the difference between watts (W), kilowatts (kW), and kilowatt ...

[Get Price](#)

kW vs kWh: What is the difference between Power and Energy?

1 kiloWatt (kW) = 1000 Watts (W) 1 kiloWatt-hours (kWh) = 1000 Watt-hours (Wh) But this still doesn't explain the difference, does it? Let me explain. What

is the difference ...

[Get Price](#)



Energy consumption calculator , kWh calculator

The energy E in kilowatt-hours (kWh) per day is equal to the power P in watts (W) times number of usage hours per day t divided by 1000 watts per kilowatt:

$$E(\text{kWh/day}) = P(\text{W}) \times t(\text{h/day}) / 1000$$

[Get Price](#)



How Many Kwh Does a Generator Produce: Uncover ...

Discover the truth about how many kWh a generator can produce based on its capacity and usage. Learn more in our detailed guide.

[Get Price](#)



What is a Kilowatt-hour (kWh) and What Can It Power?

A kilowatt hour (kWh) is the amount of power that device will use over the course of an hour. Here's an example: If you have a 1,000 watt drill, it takes

1,000 watts (or one kW) to make it work.

[Get Price](#)



How Many Watts Does a Refrigerator Use?

How Many Watts Does a Refrigerator Use? The average refrigerator freezer uses 1,429 watts / day. Or, about 60 watts per hour to run. ...

[Get Price](#)

How Many Watts Does A Microwave Use [With Data ...

How Many Watts Does A Microwave Use? Microwaves are available in different sizes and power ratings. Small and compact microwaves ...

[Get Price](#)



How Much Electricity Does A TV Use? (2025)

Electricity is priced per kilowatt-hour (kWh). 1 kWh of electricity will power a 1000-watt appliance for one hour. As we learned earlier, TVs use between 27 and



134 watts of ...

[Get Price](#)

Energy Cost Calculator

Running a refrigerator that consumes 150 watts continuously for 12 hours a day for 30 days will cost you approximately \$6.48 per month. If you don't want to perform the manual energy ...

[Get Price](#)



Power Consumption Calculator: How To Calculate Electricity Use?

On a specification sheet, you will find power or wattage (expressed in Watts). The power consumption calculator above calculates how many kWh a certain device draws.

[Get Price](#)

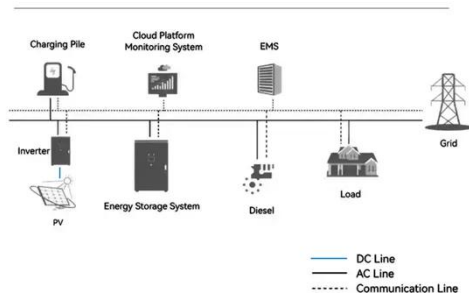
Solar Panel Output Calculator

How much power does a 10kW solar system produce per hour? A 10kW solar system would produce about 40kWh of DC power per day in 5 ...

[Get Price](#)



System Topology



kW vs. kWh: How much energy is my lighting using? [Calculator]

There's one common thread that runs through each of these questions: the difference between watts (W), kilowatts (kW), and kilowatt-hours (kWh). Calculating watts to ...

[Get Price](#)

How Many Watts Does An Xbox One Use? (2025)

How Much Electricity Does An Xbox One Use? The power needed for an Xbox One to run depends on the console model and what you're using ...

[Get Price](#)



Watts to Kilowatt-Hours (kWh) Conversion Calculator

For example: let's find the kWh of 1,500 watts for 2.5 hours. Thus, the energy in kilowatt hours for a 1,500 power consumption over 2.5 hours is equal to 3.75 kilowatt-hours. You can also use ...

[Get Price](#)

Electricity Cost Calculator

Let's say you want to calculate the cost of running a 1500-watt space heater for 6 hours daily. Electricity cost calculator would help you determine both daily and ...

[Get Price](#)

kW vs kWh: What is the difference between Power ...

1 kiloWatt (kW) = 1000 Watts (W) 1
kiloWatt-hours (kWh) = 1000 Watt-hours
(Wh) But this still doesn't explain the
difference, does it? Let me ...

[Get Price](#)

Contact Us

For catalog requests, pricing, or partnerships, please visit:
<https://www.barkingbubbles.co.za>