

SolarInvert Energy Solutions

How many watts is the smallest portable power supply



Overview

Small portable power stations typically range between 150Wh to 300Wh and are ideal for lightweight applications. These units are designed to charge small devices like smartphones, tablets, and cameras. They are also useful for running a laptop for a few hours or providing power to low-wattage items. How much power does a small power station need?

A small power station, around 150Wh, will do just fine for powering just a few devices, like phones or tablets. But if you are trying to keep your mini-fridge, lights, or machine running, you'll need something more substantial, like a 500Wh or 1000Wh model. If it will be a few hours, you may get by on something with a small capacity.

What wattage does a portable power station need?

For example, if you plan to power a device that requires 1,000 watts, you'll need a portable power station with an output wattage of at least 1,000 watts. Remember: some devices may have a higher startup or surge wattage, which is the extra wattage required when the device is first turned on. AC Output: This is the standard household outlet type.

What is a portable power station size calculator?

This Portable Power Station Size Calculator is a simple yet powerful tool that helps you determine the ideal power station capacity for your needs. By inputting your devices' total power consumption, desired runtime, and power station efficiency, you'll get an accurate estimate of the required capacity in Watt-Hours (Wh).

What are the different types of portable power stations?

Regardless of the energy source, portable power stations come in various sizes. These sizes range from small models to support small electrical devices to heavy-duty models to keep your devices running for several hours. **HOW DOES A PORTABLE POWER STATION WORK?**

A portable power station stores electricity within a battery.

How to choose a portable power station?

The next step is to consider the capacity of the portable power station. The capacity of the power station will determine how long it can run your devices. Capacity is measured in watt-hours (Wh) and indicates how much electricity the portable power station can store.

What size power station do I Need?

Example 2: “You need a power station with at least 1466.67 Wh capacity. Determine the appropriate size of a power station to run lights, fans, and small appliances overnight during camping trips. Ensure you have a power station capable of running essential devices, like CPAP machines or communication devices, during extended outages.

How many watts is the smallest portable power supply



What Size Portable Power Station Do I Need? An Ultimate Guide

HOW MUCH POWER YOUR DEVICES CONSUME? First of all, think about how much power your devices consume. A small power station, around 150Wh, will do just fine for ...

[Get Price](#)

What Size of a Portable Power Station Do I Need for Camping?

This means you'll need a portable power station to keep everything charged. But with portable power stations ranging from under 100 watt-hours to over 2000 watt-hours, how ...



[Get Price](#)



What size portable power station do I need?

All devices with different power ranges can add up to make a 2000 watt to drain sufficient power from the portable power station. Watt-hours and ampere-hours are significant ...

[Get Price](#)

What Appliances Can a Portable Power Station Run?

Some efficient portable AC units like the EcoFlow Wave blast 40000BTUs but only require 1200W. If you want to run an RV air conditioning system, you may ...

[Get Price](#)



What size portable power station do I need?

All devices with different power ranges can add up to make a 2000 watt to drain sufficient power from the portable power station. Watt-hours ...

[Get Price](#)

What Size Portable Power Station Do I Need?

To know a power station's capacity, check the specifications listed in watt-hours (Wh). On most models its written somewhere on the unit itself or even in the name of the ...

[Get Price](#)



Portable Power Station Size Calculator

The Portable Power Station Size Calculator is a powerful and user-friendly tool designed to help users determine the ideal size of a portable power station

Applications



they need.

[Get Price](#)

How many watts do you need in a portable power station?

What is a Portable Power Station? A portable power station is a rechargeable battery-powered generator that can provide AC and DC power to a range of devices and appliances. Portable ...

[Get Price](#)



What Size Portable Power Station Do I Need: Expert ...

A 500-watt power station can run small appliances like a mini-fridge, LED lights, laptops, and smartphones. It can also power small fans, ...

[Get Price](#)

Jackery Explorer 100 Plus Portable Power Station

The Explorer 100 Plus is a portable power station with a 99 Wh capacity. It can charge up to 3 devices simultaneously with 100W Dual PD

Outputs and a USB ...

[Get Price](#)



BLUETTI EB3A Portable Power Station , 600W 268Wh

BLUETTI EB3A, 40 minutes to reach 80% charged! Just a ultra-portable power station that crazy campers will love.

[Get Price](#)

How to Select the Right Size Portable Power Station For Your ...

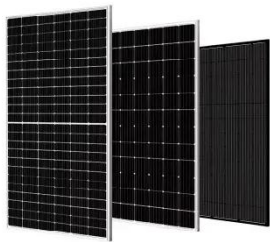
For example, if you plan to power a device that requires 1,000 watts, you'll need a portable power station with an output wattage of at least 1,000 watts. Remember: some devices may have a ...

[Get Price](#)



What Size Generator Do I Need to Run My Camper? - VTOMAN

Choosing the right generator size for your camper is crucial. Understand your power needs and calculate total demand for a reliable setup.

[Get Price](#)

Portable Power Station Size Calculator

The Portable Power Station Size Calculator is a powerful and user-friendly tool designed to help users determine the ideal size of a portable ...

[Get Price](#)

Powkey Portable Power Station 100W, 97Wh Small ...

Powkey small portable power station is mainly designed for outdoor camping, travel and home emergency battery backup, supplying long ...

[Get Price](#)

What Size Portable Power Station Do I Need: Expert Tips Revealed

A 500-watt power station can run small appliances like a mini-fridge, LED lights, laptops, and smartphones. It can also power small fans, CPAP machines, and

charge tablets.

[Get Price](#)



How Big Of A Portable Power Station Do I Need?

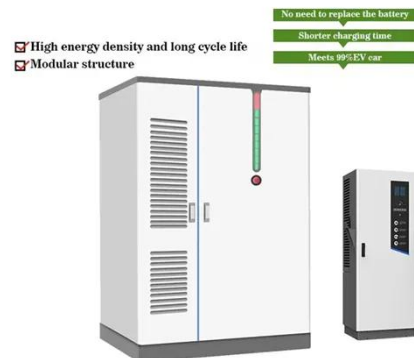
Small portable power stations typically range between 150Wh to 300Wh and are ideal for lightweight applications. These units are designed to charge small devices like ...

[Get Price](#)

Jackery Explorer 2000 v2 Portable Power Station, ...

Smallest & Lightest 2kWh Power: Weighing just 39.5 lbs, the Jackery Explorer 2000 v2 weighs less than other bulky units, making it easy to carry along on ...

[Get Price](#)



How to Choose a Portable Power Station

Portable power stations with a capacity of 999 watts or less are suitable for lightweight outdoor activities and power supply for small appliances. For



example, mobile ...

[Get Price](#)

How to Select the Right Size Portable Power Station For Your ...

For example, if you plan to power a device that requires 1,000 watts, you'll need a portable power station with an output wattage of at least 1,000 watts. Remember: some ...

[Get Price](#)



Jackery Explorer 1000 Portable Power Station, ...

Ideal for outdoor off-grid activities and home backup power to power refrigerator, TV, mini cooler, electric grill, fan, and more for your outdoor and ...

[Get Price](#)

What Size Portable Power Station Do I Need?

To know a power station's capacity, check the specifications listed in watt-hours (Wh). On most models its written somewhere on the unit itself or ...

[Get Price](#)

How Big Of A Portable Power Station Do I Need?

For example, if you plan to run a laptop that uses around 60 watts, a smartphone charger that uses 10 watts, and a small fan that uses 30 watts, you'll need a total of 100 watts ...

[Get Price](#)

What Size Portable Power Station Do I Need? An ...

HOW MUCH POWER YOUR DEVICES CONSUME? First of all, think about how much power your devices consume. A small power station, ...

[Get Price](#)

The 7 Best Portable Power Stations of 2025

Small power stations with around 300 watt hours of capacity and a max output of 300 watts, such as the Anker Solix C300 DC portable power station,



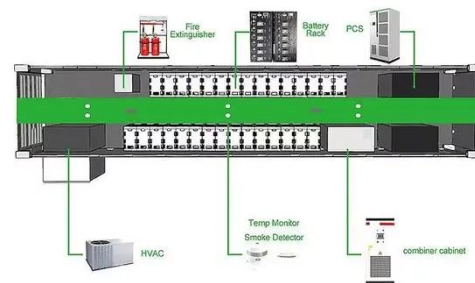
typically weigh under 10 ...

[Get Price](#)

How to Size a Portable Power Station

A portable power station's capacity, which is measured in watt hours (Wh), determines how long a portable power station can provide power ...

[Get Price](#)



Jackery Explorer 300 Portable Power Station

The Jackery Explorer 300 is the ideal portable power station for short camping trips, off-grid living, and for powering small appliances when power outages.

[Get Price](#)

Contact Us

For catalog requests, pricing, or partnerships, please visit:
<https://www.barkingbubbles.co.za>