

SolarInvert Energy Solutions

How much electricity does a communication base station consume in a year



Overview

How much energy will telecommunications consume by 2025?

When base stations, data centers and devices are added together, telecommunications will consume more than 20% of the world's electricity by 2025, says Huawei analyst Dr. Anders Andrae. Currently, it is about 11% (8). Numerous reports (9) describe the exponentially increasing energy consumption of 5G and Internet of Things applications.

Are 5G base stations causing more energy consumption?

However, Li says 5G base stations are carrying five times the traffic as when equipped with only 4G, pushing up power consumption. The carrier is seeking subsidies from the Chinese government to help with the increased energy usage.

How much power does a 5G base station use?

"A 5G base station is generally expected to consume roughly three times as much power as a 4G base station. And more 5G base stations are needed to cover the same area," -IEEE Spectrum, 5G's Waveform Is a Battery Vampire.

How much energy does a wireless network consume?

This study found that wireless networking infrastructure worldwide accounts for significantly more power consumption than data centers. "Our energy calculations show that by 2015, wireless cloud will consume up to 43 TWh, compared to only 9.2 TWh in 2012, an increase of 460%.

Why does a ran consume more power than a 4G network?

Despite improvements in energy efficiency, the RAN continues to consume more power than any other part of the network. This is due largely to new technology like mmWave transceivers and MIMO antennas, all of which require more power. Power Consumption of 4G and 5G Networks How can 5G reduce power consumption Vs. 4G.

How much energy does a mobile network use?

In 2022, the Finnish Transport and Communications Agency Traficom published a pilot study on the energy consumption of communications networks in the country finding most energy is consumed by mobile networks (60%) compared to fixed networks (20%) and other network parts (20%).

How much electricity does a communication base station consume i



A technical look at 5G energy consumption and performance

We found that, in 2015, ICT networks consumed 1.15% of the total electricity grid supply globally and contributed to 0.53% of the global carbon emissions related to energy.

[Get Price](#)

How Much Electricity Does an EV Charger Use?

Unlock the secrets of electric vehicle charging: How much electricity does an EV charger truly consume? Explore insights for sustainable ...

[Get Price](#)

LiFePO ₄
Wide temp: -20°C to 55°C
Easy to expand
Floor mount&wall mount
Intelligent BMS
Cycle Life:≥6000
Warranty :10 years



How Much Electricity Does an Electric Car Use?

How Much Electricity Does an Electric Car Use to Charge? Have you ever asked, " How much electricity to charge an electric car?" or "How ...

[Get Price](#)



Energy Consumption of 5G, Wireless Systems and the Digital ...

The Small Cell Forum predicts the installed base of small cells to reach 70.2 million in 2025 and the total installed base of 5G or multimode small cells in 2025 to be 13.1 million. "A 5G base ...

[Get Price](#)



✓ IP65/IP55 OUTDOOR CABINET

✓ ALUMINUM

✓ OUTDOOR ENERGY STORAGE CABINET

✓ OUTDOOR MODULE CABINET

Energy-Efficient Base Stations , part of Green Communications

The impact of the Base Stations comes from the combination of the power consumption of the equipment itself (up to 1500 Watts for a nowadays macro base station) multiplied by the ...

[Get Price](#)

Massachusetts State Energy Profile

Massachusetts Quick Facts The liquefied natural gas (LNG) terminal in Everett, Massachusetts, received 87% of the nation's total LNG imports in 2023, primarily from Trinidad ...

[Get Price](#)



Why does 5g base station consume so much power ...

In addition to other small modules that use electricity, the power consumption of a single 5G base station is generally around 3700 watts, ...

[Get Price](#)


What is a base station and how are 4G/5G base ...

A base station is referred to a stationary trans-receiver used in telecommunications that serves as the primary hub for connectivity of wireless ...


[Get Price](#)


Key Factors Affecting Power Consumption in Telecom ...

Discover the key factors influencing power consumption in telecom base stations. Optimize energy efficiency and reduce operational costs with ...

[Get Price](#)

Energy consumption optimization of 5G base stations considering

The communication traffic of BSs changes over time, and it assumed that the load time interval and the time-of-use electricity price are fixed, therefore,

the minimization of the ...

[Get Price](#)



LPW48V100H
48.0V or 51.2V



5G base stations use a lot more energy than 4G base stations: MTN

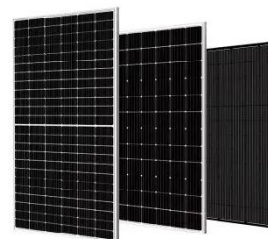
A typical 5G base station consumes up to twice or more the power of a 4G base station, writes MTN Consulting Chief Analyst Matt Walker in a new report entitled " Operators ...

[Get Price](#)

Energy Consumption of 5G, Wireless Systems and the Digital ...

When base stations, data centers and devices are added together, telecommunications will consume more than 20% of the world's electricity by ...

[Get Price](#)



PS4 Power Consumption Guide (2025)

And how much power does it use compared to other devices around your home as well? Let's take a look at the PS4 power consumption, including tips



on how to keep your ...

[Get Price](#)

How Solar Energy Systems are Revolutionizing Communication Base

Energy consumption is a big issue in the operation of communication base stations, especially in remote areas that are difficult to connect with the traditional power grid, ...



[Get Price](#)



Assured Energy for U.S. Military Bases

The Challenge of Energy Security The U.S. Department of Defense's (DoD's) fixed installations are the backbone of American military readiness. Although U.S. military bases have long ...

[Get Price](#)

Why does 5g base station consume so much power and how to ...

In addition to other small modules that use electricity, the power consumption of a single 5G base station is generally

around 3700 watts, which is about three times that of 4G ...

[Get Price](#)



How much energy will 5G consume?

The challenge with 5G energy consumption is a function of the design: larger antennas, larger bandwidths, and higher base station density ...

[Get Price](#)

How Much Power Does 5G Base Station Consume?

Have you ever wondered how much energy our hyper-connected world is consuming? 5G base stations, the backbone of next-gen connectivity, now draw 3-4 times more power than their 4G ...

[Get Price](#)



How much power does 5G consume?

When base stations, data centers and devices are added together, telecommunications will consume more



than 20% of the world's electricity by 2025, says Huawei analyst Dr. Anders ...

[Get Price](#)

5G base stations use a lot more energy than 4G base ...

A typical 5G base station consumes up to twice or more the power of a 4G base station, writes MTN Consulting Chief Analyst Matt Walker in a ...

[Get Price](#)

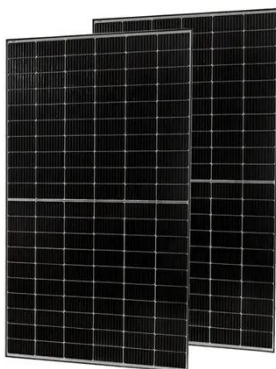
12V 10AH



Basestation

A base station (BS) is defined as a fixed communication facility that manages radio resources for one or more base transceiver stations (BTSs), facilitating radio channel setup, frequency ...

[Get Price](#)



A sense of units and scale for electrical energy ...

Discussions about energy and electricity can be confusing. Often, the root of this confusion lies in the choice of units and scale. Firstly, units are ...

[Get Price](#)


Key Factors Affecting Power Consumption in Telecom Base Stations

Discover the key factors influencing power consumption in telecom base stations. Optimize energy efficiency and reduce operational costs with our expert insights.

[Get Price](#)

Electricity usage of a Cordless Phone

A cordless phone will typically use between 2 and 3 watts of power per an hour both during active usage and when recharging. A cordless phone is typically left plugged in 24 hours a day, not ...

[Get Price](#)


Frequently Asked Questions (FAQs)

How much electricity does a power plant generate? The amount of electricity that a power plant generates depends on its electricity generation capacity and on



the amount of time the ...

[Get Price](#)

Cordless Phone Base Station Power Consumption & Electricity ...

Cordless Phone Base Station Power Consumption, Wattage, and Cost Calculator Use our Cordless Phone Base Station calculator to determine the power consumption, wattage, and ...

[Get Price](#)



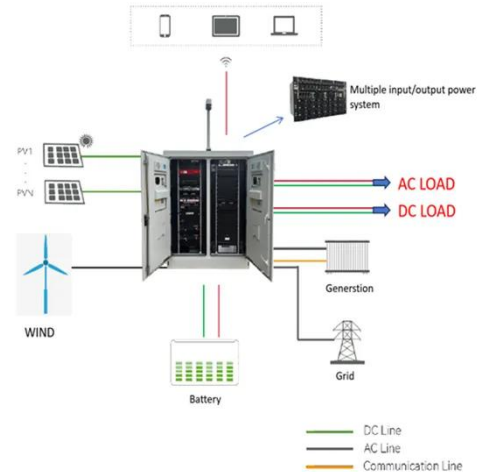
Power Consumption of 4G and 5G Networks

With many of the core network services moving to the cloud in 5G, we see a reduction in the energy consumption of core network elements from 4G to 5G and an increase ...

[Get Price](#)

Power Consumption of 4G and 5G Networks

With many of the core network services moving to the cloud in 5G, we see a reduction in the energy consumption of core network elements from ...

[Get Price](#)

How much energy does a cell tower consume?

And it is about 2% of India's annual energy consumption. In India, for a typical telecom tower infrastructure, the energy costs contribute to 40-50% of the total operating costs.

[Get Price](#)

Contact Us

For catalog requests, pricing, or partnerships, please visit:
<https://www.barkingbubbles.co.za>