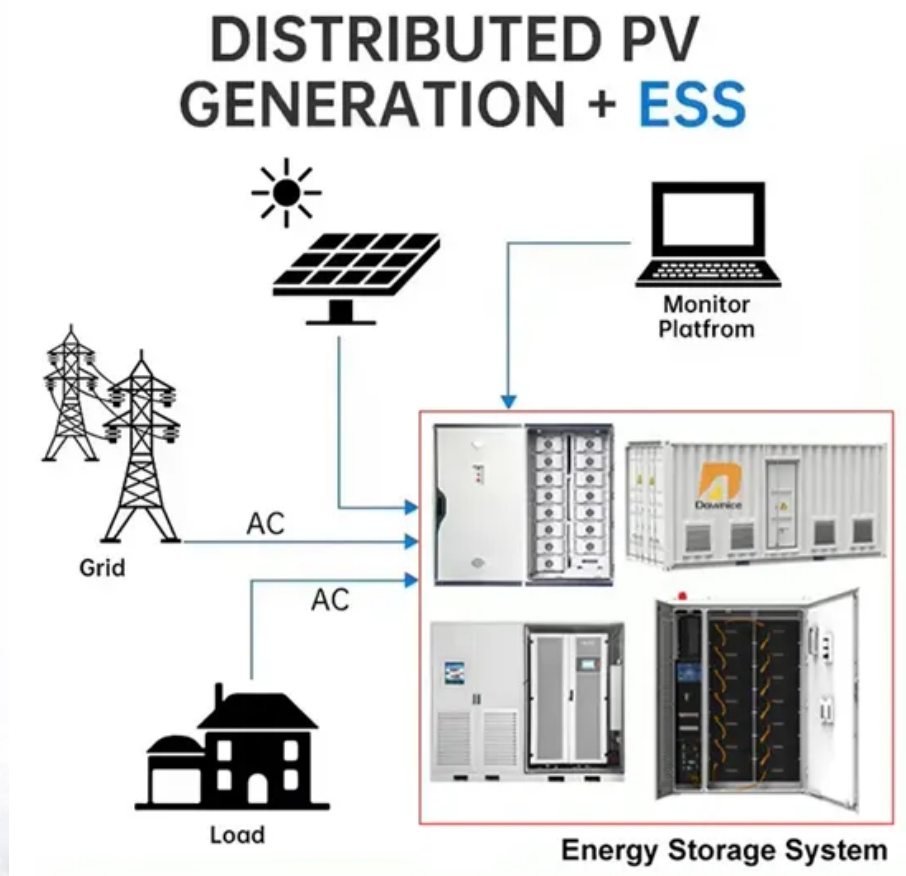


SolarInvert Energy Solutions

How much power does a communication base station generate



Overview

How do base stations affect mobile cellular network power consumption?

Base stations represent the main contributor to the energy consumption of a mobile cellular network. Since traffic load in mobile networks significantly varies during a working or weekend day, it is important to quantify the influence of these variations on the base station power consumption.

Does base station power consumption affect traffic load?

Since traffic load in mobile networks significantly varies during a base station power consumption. Therefore, this paper investigates changes in the their respective traffic load. The real data in terms of the power consumption and traffic base station site. Measurements show the existence of a direct relationship between base.

How much power does a cellular base station use?

This problem exists particularly among the mobile telephony towers in rural areas, that lack quality grid power supply. A cellular base station can use anywhere from 1 to 5 kW power per hour depending upon the number of transceivers attached to the base station, the age of cell towers, and energy needed for air conditioning.

What is the impact of base stations?

The impact of the Base Stations comes from the combination of the power consumption of the equipment itself (up to 1500 Watts for a nowadays macro base station) multiplied by the number of deployed sites in a commercial network (e.g. more than 12000 in UK for a single operator).

What are the main energy consumers of a base station?

Of the other base station elements, significant energy consumers are: air conditioning (17.5%), digital signal processing (10%) and AC/DC conversion elements (7.5%) . terms of three levels: component, link and network.

efficiency of the power amplifier. Efficiency can be improved using a specially designed power.

What are the components of a base station?

Power Supply: The power source provides the electrical energy to base station elements. It often features auxiliary power supply mechanisms that guarantee operation in case of lost or interrupted electricity, during blackouts. **Baseband Processor:** The baseband processor is responsible for the processing of the digital signals.

How much power does a communication base station generate



Basestation

A base station (BS) is defined as a fixed communication facility that manages radio resources for one or more base transceiver stations (BTSs), facilitating radio channel setup, frequency ...

[Get Price](#)

5g base station architecture

5G (fifth generation) base station architecture is designed to provide high-speed, low-latency, and massive connectivity to a wide range of devices. The architecture is more ...

[Get Price](#)



Size, weight, power, and heat affect 5G base station ...

Engineers designing 5G base stations must contend with energy use, weight, size, and heat, which impact design decisions.

[Get Price](#)

Measurements and Modelling of Base Station Power ...

Base stations represent the main contributor to the energy consumption of a mobile cellular network. Since traffic load in mobile networks significantly varies during a working or weekend ...

[Get Price](#)



(PDF) Measurements and Modelling of Base Station Power ...

Base stations represent the main contributor to the energy consumption of a mobile cellular network. Since traffic load in mobile networks significantly varies during a working or ...

[Get Price](#)

COMMUNICATION BASE STATION

The power station was developed by Amea Power, an independent power producer (IPP), based in the United Arab Emirates. The solar farm, which is the largest grid-ready in Togo, is also ...

[Get Price](#)



Power Base Station

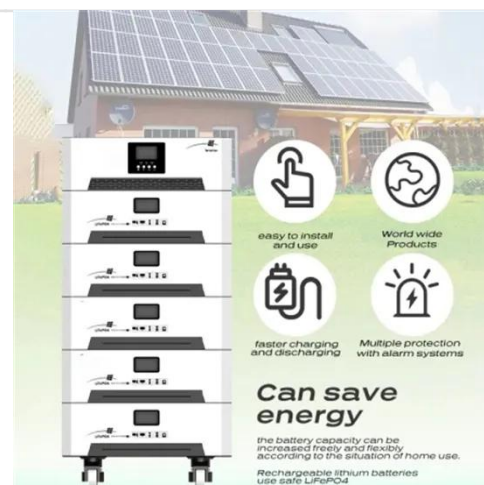
Maximum base station power is limited to 24 dBm output power for Local Area base stations and to 20 dBm for Home base stations, counting the power over all antennas (up to four).

[Get Price](#)


Power Consumption Modeling of Base Station as per Traffic ...

Base Station is the main contributor of energy consumption in cellular mobile communication. The traffic of base station varies over time and space. Therefore, it is important to quantify the

...

[Get Price](#)


Solar communication base station photovoltaic power ...

solar powered BS typically consists of PV panels, batteries, an integrated power unit, and the load. This section describes these components. Photovoltaic panels are arrays of solar PV cells to ...

[Get Price](#)

Key Factors Affecting Power Consumption in Telecom ...

Discover the key factors influencing power consumption in telecom base stations. Optimize energy efficiency and

reduce operational costs with ...

[Get Price](#)



LPW48V100H
48.0V or 51.2V



How Solar Energy Systems are Revolutionizing Communication Base Stations?

Why Solar Energy for Communication Base Stations? Being a clean and renewable energy source, solar energy emits much less greenhouse gas compared to the ...

[Get Price](#)

Key Factors Affecting Power Consumption in Telecom Base Stations

Discover the key factors influencing power consumption in telecom base stations. Optimize energy efficiency and reduce operational costs with our expert insights.

[Get Price](#)



A sense of units and scale for electrical energy ...

Discussions about energy and electricity can be confusing. Often, the root of this



confusion lies in the choice of units and scale. Firstly, units are ...

[Get Price](#)

How Much Power Does 5G Base Station Consume? , Huijue ...

Have you ever wondered how much energy our hyper-connected world is consuming? 5G base stations, the backbone of next-gen connectivity, now draw 3-4 times more power than their 4G ...



[Get Price](#)



Base Stations

Base stations form a key part of modern wireless communication networks because they offer some crucial advantages, such as wide coverage, continuous communications and ...

[Get Price](#)

(PDF) Measurements and Modelling of Base Station ...

Base stations represent the main contributor to the energy consumption of a mobile cellular network. Since traffic

load in mobile networks ...

[Get Price](#)



Peaking power plant

Peaking power plant Kearny Generating Station, a former coal-fired base load power plant, now a gas-fired peaker, on the Hackensack River in New Jersey Peaking power plants, also known ...

[Get Price](#)

Generation

At the heart of an electricity utility such as Eskom, is the responsibility for supplying the electricity on which modern society depends. Our coal fired power stations forms the backbone of our ...

[Get Price](#)



Mobile phone base stations: radio waves and health

Summary Base stations transmit and receive radio waves to connect the users of mobile phones and other devices to mobile communications networks. The

strength of the ...

[Get Price](#)



What is Telecommunication Base Station , China Hop

The existence of a base station is as important as water and electricity, as the electromagnetic waves it emits wrap around us like air. Quickly and smoothly ...

[Get Price](#)



Types and Applications of Mobile Communication ...

Mobile communication base station is a form of radio station, which refers to a radio transceiver station that transmits information between mobile ...

[Get Price](#)

Power Consumption Modeling of 5G Multi-Carrier Base ...

However, there is still a need to understand the power consumption behavior of state-of-the-art base station architectures, such as multi-carrier

active antenna units (AAUs), as well as the ...

[Get Price](#)



What is the Power Consumption of a 5G Base Station?

These 5G base stations consume about three times the power of the 4G stations. The main reason for this spike in power consumption is the addition of massive MIMO and ...

[Get Price](#)

Energy-Efficient Base Stations , part of Green Communications

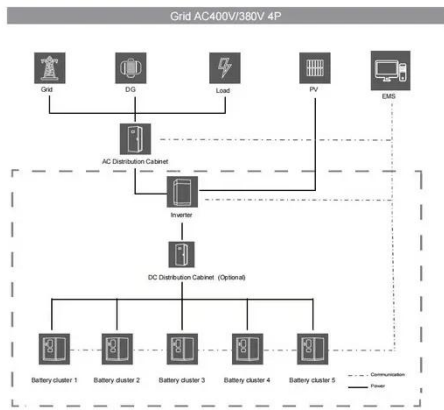
The impact of the Base Stations comes from the combination of the power consumption of the equipment itself (up to 1500 Watts for a nowadays macro base station) multiplied by the ...

[Get Price](#)



Measurements and Modelling of Base Station Power Consumption under Real

Base stations represent the main contributor to the energy consumption of a mobile cellular network. Since traffic



load in mobile networks significantly varies during a working or weekend ...

[Get Price](#)

Communication Base Station Power Consumption & Electricity ...

Calculate the energy consumption and running costs of your Communication Base Station efficiently with our tool. Discover how your 50-watt Communication Base Station impacts your ...



[Get Price](#)

Contact Us

For catalog requests, pricing, or partnerships, please visit:
<https://www.barkingbubbles.co.za>