

SolarInvert Energy Solutions

How to replace the battery of a communication base station



Overview

Remove the back cover using a fingernail or similar tool. Align the gold contacts and insert the battery. Using the tab, lift the battery out by pulling straight up. Replace the battery cover. Here's how to insert / remove the battery for your Home Phone Base. How do you replace a battery in a base station?

To replace batteries in a SimpliSafe base station, rotate the base counterclockwise (CCW) to remove it, then remove the batteries and replace them while ensuring the (-) and (+) orientation. When disposing of NiMH batteries, they should be recycled.

How to remove a battery from a SimpliSafe base station?

To remove the battery from your SimpliSafe base station, first locate the battery compartment on the bottom of the base station.

How many batteries does the base station take?

The Base Station takes four (4) 1.2V, 1300mAh nickel-metal hydride (NiMH) rechargeable batteries. Regular alkaline batteries should never be inserted into the Base Station, as they may damage the device. Once you have acquired the necessary NiMH rechargeable batteries, you can follow the steps below to replace them:.

What makes a telecom battery pack compatible with a base station?

Compatibility and Installation Voltage Compatibility: 48V is the standard voltage for telecom base stations, so the battery pack's output voltage must align with base station equipment requirements. Modular Design: A modular structure simplifies installation, maintenance, and scalability.

How do you remove a NiMH battery from a base station?

Remove the power plug from the bottom of the base station to expose one screw. Remove the screw, rotate the base counterclockwise, and it will pull

off. Remove the NiMH batteries and replace them while ensuring the correct (-) and (+) orientation. When disposing of NiMH batteries, they should be recycled.

Where is the battery compartment on a SimpliSafe base station?

The battery compartment on a SimpliSafe base station can usually be found on the bottom. This is where the magic happens when it comes to removing the battery.

How to replace the battery of a communication base station



Telecom Base Station Backup Power Solution: Design Guide for ...

Discover the 48V 100Ah LiFePO4 battery pack for telecom base stations: safe, long-lasting, and eco-friendly. Optimize reliability with our design guide.

[Get Price](#)

Comprehensive Guide to Telecom Batteries

This comprehensive guide will delve into the types of telecom batteries, their applications, maintenance tips, and the latest advancements in battery technology.

[Get Price](#)



How to Replace Your ADT TS Base Station Back Up Battery

If you have an ADT Total Security - TSSC - TS Base Station and the back up battery is low, you will want to replace it. You can purchase one here at this link and then watch this video to see how

[Get Price](#)



Ring Alarm (2nd Gen)

How To Replace Your Ring Alarm Base Station Replace your Ring Alarm Base Station with a new device sent to you by Ring Customer Support.

[Get Price](#)



Dispatching strategy of base station backup power supply ...

capacity energy storage is proposed. The scheduling strategy reserve battery is considered when the communication traffic changes, and base station backup battery model participating in ...

[Get Price](#)

How to Remove Battery from SimpliSafe Base Station

Learn the step-by-step process to safely remove the battery from your SimpliSafe Base Station. Ensure your security system stays functional and efficient.

[Get Price](#)



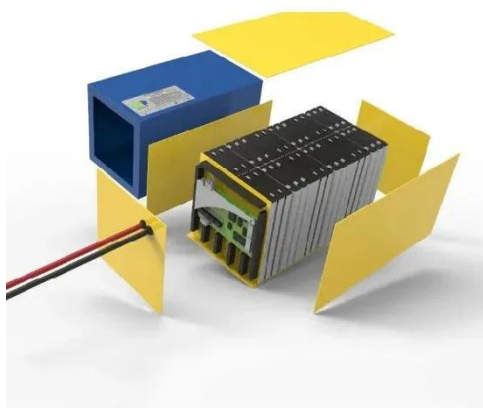
Home Phone Base

Here's how to insert / remove the battery for your Home Phone Base. Ensure the device is powered off. Remove the back cover using a fingernail or similar tool. Align the gold contacts ...

[Get Price](#)

How To Replace Base Station Batteries , SimpliSafe Support Home

You will likely never need to replace your Base Station's batteries as they are rechargeable and meant to last. The Base Station takes four (4) 1.2V, 1300mAh nickel-metal hydride (NiMH) ...

[Get Price](#)

How to Remove Battery from Simplisafe Base Station

In conclusion, removing the battery from your SimpliSafe base station is a simple process that should take no more than 10 minutes to complete. With these easy steps, you ...

[Get Price](#)

ZTE WIRELESS HOME PHONE BASE USER GUIDE

We know you're excited to use your new ZTE Wireless Home Phone Base, and this user guide will help you get familiar with it, so you can start using it as soon as

possible. Each section ...

[Get Price](#)



UPS Batteries in Telecom Base Stations - leagend

When designing a UPS battery system for a telecom base station, engineers must address several critical factors to ensure reliability, efficiency, and longevity.

[Get Price](#)

How to Change Battery of a Portable Power Station?

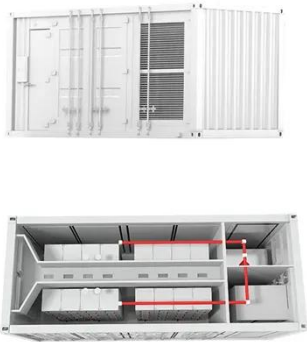
The process involves a few simple steps, such as turning off the power station, locating the battery compartment, removing screws and ...

[Get Price](#)



13 Ring Base Station Problems Troubleshooting (Solved)

Understanding the Ring Base Station can be a bit challenging, and encountering issues can be a common occurrence. However, there's ...

[Get Price](#)

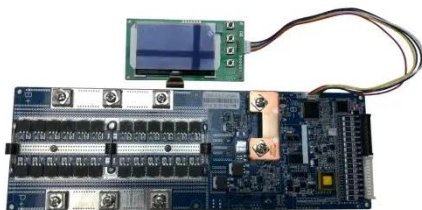
Comprehensive Guide to Telecom Batteries

These batteries support base stations and ensure that communication remains uninterrupted during electrical failures.
2.3 Emergency Power Systems Telecom batteries are ...

[Get Price](#)

How to Remove Battery from SimpliSafe Base Station

Learn the step-by-step process to safely remove the battery from your SimpliSafe Base Station. Ensure your security system stays functional ...

[Get Price](#)

Communication Base Station Backup Power LiFePO4 ...

Why LiFePO4 battery as a backup power supply for the communications industry?
1.The new requirements in the field of ...

[Get Price](#)





UPS Batteries in Telecom Base Stations - leagend

When designing a UPS battery system for a telecom base station, engineers must address several critical factors to ensure reliability, efficiency, ...

[Get Price](#)

Upgrading or Replacing Your Ring Alarm Base Station

This replacement process will remove your old Base Station from your Ring account after it successfully saves all of your devices and settings. This will remove all of your information and ...

[Get Price](#)



Selection and maintenance of batteries for communication base stations

This article focuses on the engineering application of the battery in the power supply system of the communication base station, and focuses on the selection, installation and maintenance of the ...

[Get Price](#)



Setting Up Your Ring Alarm Base Station

How does battery backup work? When your Ring Alarm loses power, the

internal rechargeable battery will keep your Ring Alarm Base Station online for up to 24 hours. You may have some ...

[Get Price](#)



How to Remove Battery from Simplisafe Base Station

By following these steps, you can easily maintain and replace the battery in your SimpliSafe base station, ensuring uninterrupted security for your home or ...

[Get Price](#)

Selection and maintenance of batteries for communication base ...

This article focuses on the engineering application of the battery in the power supply system of the communication base station, and focuses on the selection, installation and maintenance of the ...

[Get Price](#)



Telecom Base Station Backup Power Solution: Design ...

Discover the 48V 100Ah LiFePO4 battery pack for telecom base stations: safe, long-lasting, and eco-friendly. Optimize

reliability with our ...

[Get Price](#)



How to Remove SimpliSafe Base Station Battery? (Step-by-Step ...

By following these steps, you can easily maintain and replace the battery in your SimpliSafe base station, ensuring uninterrupted security for your home or business.

[Get Price](#)



How To Replace Base Station Batteries , SimpliSafe ...

You will likely never need to replace your Base Station's batteries as they are rechargeable and meant to last. The Base Station takes four (4) 1.2V, ...

[Get Price](#)



?Changing batteries in base station , SimpliSafe Support Home

But if you ever need to replace your Base Station's batteries, you can find a step-by-step guide here. IMPORTANT: Please make sure that you use NiMH

(nickel-metal hydride) ...

[Get Price](#)



Use of Batteries in the Telecommunications Industry

The Alliance for Telecommunications Industry Solutions is an organization that develops standards and solutions for the ICT (Information and Communications Technology) industry.

[Get Price](#)

Communication Base Station Power Backup Units

The Silent Guardians of Connectivity
When typhoons knock out power grids or extreme temperatures strain energy systems, communication base station power backup units become ...

[Get Price](#)

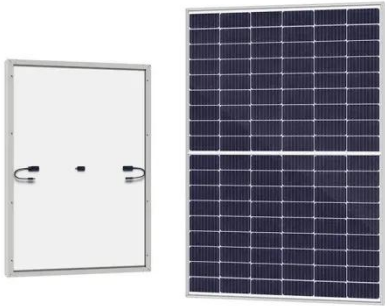


SimpliSafe battery life and replacement tips , Digital Trends

With the exception of the base station and keyfob, the user does all battery replacements. Those two accessories require you to contact support to change

their power.

[Get Price](#)



Contact Us

For catalog requests, pricing, or partnerships, please visit:
<https://www.barkingbubbles.co.za>