

## SolarInvert Energy Solutions

# How to view the output current of the battery cabinet



## Overview

---

Can a battery cabinet be connected to a DC Circuit?

The battery cabinet frame is not referenced to the DC circuit. Each battery cabinet has its own overcurrent protection device. Internal battery strings are to be connected by an authorized Eaton Customer Service Engineer. 1.7 For More Information for UPS cabinet conduit and terminal specifications and locations.

How do you test a battery?

Read the voltage level of the battery with a digital multimeter or hydrometer-style battery tester. Measure the current flow with the multimeter. Disconnect the multimeter and turn off the electrical system of the device. Reconnect the negative terminal of the battery.

Where is the battery cabinet located?

The battery cabinet may be located to either the right or left of the UPS cabinet. The recommended location is to the right of the UPS cabinet. This procedure assumes the battery cabinet is located to the right of the UPS cabinet. 21.

Where do I install a line-up and match Battery Cabinet?

Line-up-and-match battery cabinets are installed adjacent to the UPS. The recommended installation location is on the right side of the UPS cabinet as viewed from the front of the cabinet. See Figure 3 for line-up-and-match configuration views. Figure 3. Eaton 93PM 100 kW UPS and Two 93PM Integrated Battery Cabinets.

How to check battery amps using a multimeter?

To check the amps of your battery using a multimeter, you need to execute an amp measurement test. This test involves connecting the multimeter in series with the power source and measuring the current flow. Here are the steps to

follow: Step 1: Turn off the electrical system of your vehicle or device to avoid any damage to the circuit.

Where is the UPS battery cabinet located?

The recommended location is to the right of the UPS cabinet. This procedure assumes the battery cabinet is located to the right of the UPS cabinet. 21. If line-up-and-match installation, remove the rectangular knockout on the bottom front side of the UPS and the IBC (see Figure 15).

## How to view the output current of the battery cabinet

---

### Eaton-Battery-Handbook-BAT11LTA.PDF



Full-float operation - Operation of a DC system with the battery, battery charger and load connected in parallel, with the battery charger supplying the normal DC load plus any self ...

[Get Price](#)

### Uninterruptible Power Supply (UPS) Backup Battery ...

Battery Cabinets Arimon designs and manufactures custom uninterruptible power supply (UPS) backup battery cabinets, battery racks and accessories for the ...

[Get Price](#)



### How to measure output current of battery , Information by ...

Breaker/fuse is sized to load and so is cable (overcurrent protects cable). Size the source to equal or exceed the combined loads. See it all works together. The feeder between ...

[Get Price](#)



### Eaton 93PM UPS 100-500 kVA Users and installation guide

The battery converter derives its input from the regulated DC output of the rectifier and provides regulated charge current to the battery. The battery is always connected to the UPS and ready ...

[Get Price](#)



### ESS-GRID Cabinet Brochure EN-241028

The ESS-GRID Cabinet series are outdoor battery cabinets for small-scale commercial and industrial energy storage, with four different capacity options based on different cell ...

[Get Price](#)

### Liebert® EXS External Battery Cabinet Installer/User Guide

For battery cabinets that are connecting to a Vertiv™ Liebert® EXS UPS, see Figure 2.1 on page 8, cables will run from the positive, negative and neutral busbars of the adjacent battery ...

[Get Price](#)



### Microsoft Word

DataSafe® HX Front Terminal Battery Cabinets are shipped partially assembled, internally pre-wired and come standard with a circuit breaker for over current protection. Each cabinet is



...

[Get Price](#)

## Battery & Power Supply Testing!

The current you see displayed is the nominal charging current being output to the battery (it should appear as a "negative" number if you've connected everything properly).

[Get Price](#)



## Acrel Hall Current Sensor in Battery Cabinet Monitoring

When the battery is charged and discharged, there are strict requirements on the charge and discharge current. This paper introduces the ...

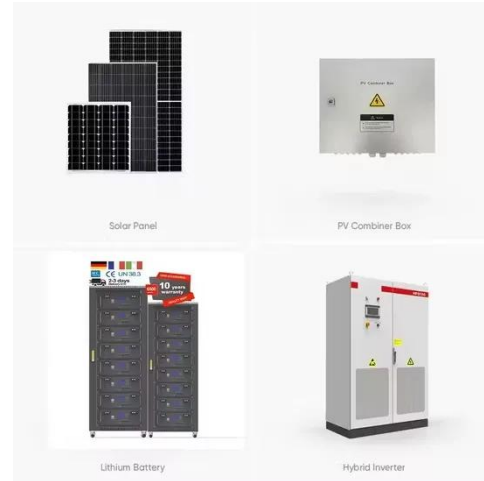
[Get Price](#)

## UBC87 Battery Cabinet Installation, Operation,

Install the main POS and NEG cables from the output circuit breaker to the correct battery posts on the designated battery units shown in the provided

battery system schematic.

[Get Price](#)



## UNDERSTANDING BATTERY INPUT OUTPUT A ...

Battery charging cabinets are a type of safety cabinet that's designed especially for lithium-ion batteries. Over the recent years, as the prevalence of lithium-ion batteries has grown in ...

[Get Price](#)

## Guidelines for Current Transformer (CT) installation

Use cases for CT installation The CT measurements provide valuable system information to the installers and homeowners about PV production, home consumption, and IQ Battery ...

[Get Price](#)



## Battery Cabinets & Enclosures

Exponential Power's Battery Cabinets & Enclosures provide durable, secure solutions for telecommunications and industrial applications. Designed to protect battery systems, these ...



[Get Price](#)

---

### Battery & Power Supply Testing!

The current you see displayed is the nominal charging current being output to the battery (it should appear as a "negative" number if you've connected ...

[Get Price](#)

### How to test the internal current of the battery cabinet

The Hioki BT3562 battery tester is designed to measure internal resistance using an AC current at a measurement frequency of 1 kHz, letting you accurately capture the internal resistance of

[Get Price](#)

---

### Battery Cabinets for Uninterrupted Power Supply (UPS)

Battery Cabinets Through cutting-edge research and innovation, advanced engineered power products for backup



battery cabinets have become ...

[Get Price](#)



### Battery Cabinet

For a UPS system that does not ground the DC/Battery Circuit, isolation should be maintained between the chassis and any point in the battery circuit, to reduce the risk of electric shock ...

[Get Price](#)

### How to Check Battery Amps with a Multimeter

Learn how to check battery amps with a multimeter. A step-by-step guide to ensure accurate readings and battery health.

[Get Price](#)



### ATC Cabinets , Paradigm Traffic Systems

Cabinets One of the most critical components of a signalized intersection is the traffic control cabinet. The Econolite controller cabinet houses the

signal ...

[Get Price](#)



## Battery Cabinet Cost Structure and Optimiza-tion

Chapter 2 describes how UPS devices and battery cabinets work and what their applications can be. Chapter 3 deals with the DFMA method which was used when analyzing the current ...

[Get Price](#)



## Eaton 93PM Integrated Battery Cabinet-Large and Large ...

The battery cabinet contains its own energy source. The internal wiring and output terminals may carry live voltage even when the UPS is not connected to an AC source.

[Get Price](#)

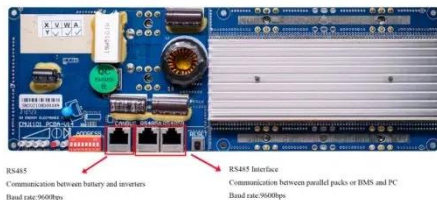


## Eaton Samsung Gen 3 Battery Cabinet Installation and ...

Control wiring can be routed through the sides of the battery cabinets in side by side configurations or through the top of the battery cabinets using conduit in

standalone ...

[Get Price](#)



## Acrel Hall Current Sensor in Battery Cabinet Monitoring

When the battery is charged and discharged, there are strict requirements on the charge and discharge current. This paper introduces the realization of the battery charge and ...

[Get Price](#)

## BC55 Battery Cabinet Installation, Operation, & Maintenance ...

The option provides functional access to the equipment circuit breaker via a handle located on the exterior of a cabinet door that is physically connected to the circuit breaker in the cabinet's ...

[Get Price](#)

**LPSB48V400H**  
**48V or 51.2V**



## How To Measure Current Of Battery Using Multimeter? A Simple ...

Measuring the current of a battery using a multimeter is a fundamental skill for anyone working with electronics. This process involves carefully connecting the

multimeter in ...

[Get Price](#)



---

### **Samsung Gen 2 lithium battery cabinet site plan**

SOURCE 1 (REQUIRED) SHALL BE PROVIDED FROM THE UPS OUTPUT DISTRIBUTION; SOURCE 2 (OPTIONAL) SHALL BE PROVIDED FROM THE UPS BYPASS INPUT. FOR ...

[Get Price](#)



---

## **Contact Us**

For catalog requests, pricing, or partnerships, please visit:  
<https://www.barkingbubbles.co.za>