

## SolarInvert Energy Solutions

# Huawei 5G base station equipment power consumption



## Overview

---

In the 5G era, the maximum energy consumption of a 64T64R active antenna unit (AAU) will be an estimated 1 to 1.4 kW to 2 kW for a baseband unit (BBU). Base stations with multiple frequencies will be a t.

How much power does a 5G station use?

The power consumption of a single 5G station is 2.5 to 3.5 times higher than that of a single 4G station. The main factor behind this increase in 5G power consumption is the high power usage of the active antenna unit (AAU). Under a full workload, a single station uses nearly 3700W.

How many kilowatts does a 5G site need?

Energy-efficient networks along with. to Huawei data on RRU/BBU needs per site, the typical 5G site has power needs of over 11.5 kilowatts, up nearly 70% from a base station deploying a mix of 2G, 3G and 4G radios.

Why does 5G use more power than 4G?

The data here all comes from operators on the front lines, and we can draw the following valuable conclusions: The power consumption of a single 5G station is 2.5 to 3.5 times higher than that of a single 4G station. The main factor behind this increase in 5G power consumption is the high power usage of the active antenna unit (AAU).

Is 5G base station power consumption accurate?

esan@huawei.comAbstract—The energy consumption of the fifth generation (5G) of mobile networks is one of the major concerns of the telecom industry. However, there is not currently an accurate and tractable approach to evaluate 5G base stations (BSs) power consumption. In this article, we pr.

What is a 5G base station?

A 5G base station is mainly composed of the baseband unit (BBU) and the AAU — in 4G terms, the AAU is the remote radio unit (RRU) plus antenna. The role of the BBU is to handle baseband digital signal processing, while the AAU

converts the baseband digital signal into an analog signal, and then modulates it into a high-frequency radio signal.

How much power will 5G use in 2023?

Multiple bands in one site will be the typical configuration in the 5G era. The proportion of sites with more than five bands will increase from 3% in 2016 to 45% in 2023. As a result, the maximum power consumption of a site will be higher than 10 kW, in a site where there is more than 10 bands, the power consumption will exceed 20 kW.

## Huawei 5G base station equipment power consumption

---



### Technical Requirements and Market Prospects of 5G Base Station ...

With the rapid development of 5G communication technology, global telecom operators are actively advancing 5G network construction. As a core component supporting ...

[Get Price](#)

### Huawei Releases 5G Series Products to Expand Multi ...

At the 2021 Mobile World Congress (MWC 2021) in Barcelona, Huawei launched a series of 5G products and solutions oriented to "1+N" 5G ...

[Get Price](#)



### How energy-efficient are Huawei's 5G base stations compared to ...

Power Consumption: Huawei's 5G base stations have significantly lower power consumption compared to their 4G counterparts. This is achieved through advanced power management ...

[Get Price](#)

### 5g-huawei-equipment-features

Introduction to Huawei 5G Equipment  
Huawei is one of the global leaders in telecommunications infrastructure and has played a pivotal role in the development and deployment of 5G ...

[Get Price](#)

## Applications



**INTEGRATED DESIGN**  
EASY TO TRANSPORT AND INSTALL,  
FLEXIBLE DEPLOYMENT



## HUAWEI DBS5900 RRU5901 (1800) Distributed Base ...

DBS5900 adopts a modular structure, and the baseband control unit BBU and the radio frequency module RRU are deployed separately. It has the ...

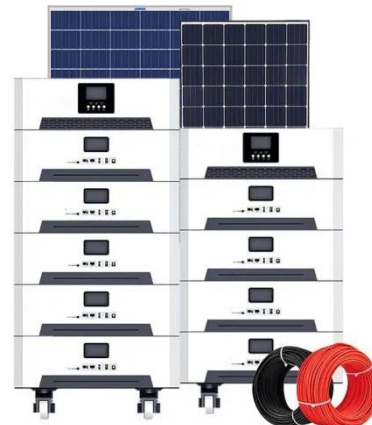
[Get Price](#)

## What is the Power Consumption of a 5G Base Station?

Why is 5G Power Consumption Higher?

1. Increased Data Processing and Complexity These 5G base stations consume about three times the power of the 4G stations. ...

[Get Price](#)



## Site power equipment 2-4G and 5G

Figure 2 illustrate the trend of energy consumptions. 5G macro base stations may require several new, power-hungry components, including microwave or ...

[Get Price](#)



✓ 50KW/100KWH

✓ HIGHER POWER OUTPUT  
IN OFF-GRID MODE

✓ CONVENIENT OPERATION  
& MAINTENANCE

✓ PRE-WIRED

## GREEN 5G: BUILDING A SUSTAINABLE WORLD

For example, Vodafone has used AI to optimise network coverage in response to hotspots and improve handovers between cells, thereby reducing network energy consumption by around ...

[Get Price](#)



Modular design,  
unlimited combinations in parallel  
**BUILT-IN DUAL FIRE PROTECTION MODULE**



## 5G Transmit Power and Antenna radiation

To keep the power density per MHz similar to LTE systems, the 100MHz 3.5GHz spectrum will require 5x 80 W, which is not easy to be achieved. 5G trials ...

[Get Price](#)

## Front Line Data Study about 5G Power Consumption

The two figures above show the actual power consumption test results of 5G base stations from different manufacturers, ZTE and HUAWEI, in Guangzhou and Shenzhen, by an anonymous ...

[Get Price](#)



## Huawei will launch lowest power consumption 5G base station, ...

Today, Huawei will have a new "0 Bit 0 Watt" 5G network base station next month, which could standby at the





lowest power consumption of 5W equal to a light bulb.

[Get Price](#)

## Powering 5G

This figure is for one amplifier, and in a typical 5G base station site, according to Huawei, the total power consumption can be over 11.5kW ...

[Get Price](#)



## What is the Power Consumption of a 5G Base Station?

These 5G base stations consume about three times the power of the 4G stations. The main reason for this spike in power consumption is the addition of massive MIMO and ...

[Get Price](#)

## Five Breakthroughs from Huawei's Ultra-Lean Site ...

Huawei's Super Blade Site solution utilizes modular outdoor BBUs, blade power supplies, and blade batteries to achieve full-outdoor macro deployment



...

[Get Price](#)



### Power consumption based on 5G communication

At present, 5G mobile traffic base stations in energy consumption accounted for 60% ~ 80%, compared with 4G energy consumption increased three times. In the future, high-density ...

[Get Price](#)



### 5G Power: Creating a green grid that slashes costs, emissions

In the 5G era, the maximum energy consumption of a 64T64R active antenna unit (AAU) will be an estimated 1 to 1.4 kW to 2 kW for a baseband unit (BBU). Base stations with multiple ...

[Get Price](#)



### 5G Base Station Growth: How Many Are Active? , PatentPC

When it comes to 5G base station equipment, five companies dominate the market: Huawei, Ericsson, Nokia, ZTE, and Samsung. These firms provide the



Standard 20ft containers



Standard 40ft containers

hardware and software needed ...

[Get Price](#)

## Site power equipment 2-4G and 5G

Figure 2 illustrate the trend of energy consumptions. 5G macro base stations may require several new, power-hungry components, including microwave or millimeter-wave transceivers, field



[Get Price](#)



## Why does 5g base station consume so much power and how to ...

Huawei and ZTE's 5G base stations have a 100% load power consumption of 3852.5W and 3674.85W, respectively, while ZTE's 4G base station has a power consumption ...

[Get Price](#)

## 5G base stations use a lot more energy than 4G base ...

However, Li says 5G base stations are carrying five times the traffic as when equipped with only 4G, pushing up power consumption. The carrier is ...

[Get Price](#)


### Huawei will launch lowest power consumption 5G ...

Today, Huawei will have a new "0 Bit 0 Watt" 5G network base station next month, which could standby at the lowest power consumption of ...

[Get Price](#)

### Machine Learning and Analytical Power Consumption ...

roduce a new power consumption model for 5G active antenna units (AAUs), the highest power consuming component of a BS1 and in turn of a mobile network. I. particular, we present an ...

[Get Price](#)

**1mwh** (500kw/1mw)

AIR COOLING  
ENERGY STORAGE CONTAINER



### 5G Power Whitepaper

As the power consumption of 5G sites expected to be doubled, the heat consumption of sites is also expected to go up in parallel. The heat dissipation capability of some sites cannot meet ...

[Get Price](#)

---

### **Huawei UMPTE3 Universal Main Processing for 5G ...**

High quality Huawei UMPTE3 Universal Main Processing for 5G Base Station BBU5900 from China, China's leading UMPTE3 Universal Main Processing ...

[Get Price](#)

### **Powering 5G**

This figure is for one amplifier, and in a typical 5G base station site, according to Huawei, the total power consumption can be over 11.5kW including legacy 2/3/4G radios and ...

[Get Price](#)

---

### **Site power equipment 2-4G and 5G**

Download scientific diagram , Site power equipment 2-4G and 5G from publication: 5G Energy Efficiency Overview , It is a critical requirement for the future of 5G communication

networks to ...

[Get Price](#)



### **DBS5900 Distributed Base Stations -- Huawei Enterprise**

The DBS5900 adopts a modular structure, with the baseband unit BBU and remote radio unit RRU deployed separately. The DBS5900 has the characteristics of small size, low power ...

[Get Price](#)

### **Why does 5g base station consume so much power ...**

Huawei and ZTE's 5G base stations have a 100% load power consumption of 3852.5W and 3674.85W, respectively, while ZTE's 4G base ...



[Get Price](#)

## **Contact Us**

For catalog requests, pricing, or partnerships, please visit:  
<https://www.barkingbubbles.co.za>