

SolarInvert Energy Solutions

Is the communication base station EMS a device



Overview

What is a base station?

A base station is a radio operated from a fixed site such as a dispatch center, hospital, or some other location. It usually runs off community electrical power and transmits at much higher power than smaller, portable radios. Alternative power in the form of generators or a set of batteries are usually available.

How does EMS radio communication work?

It may also convert the signal to a telephone signal and send the communications through public or dedicated telephone lines. EMS radio communication takes place in the VHF low band, VHF high band, and UHF band. VHF low band is the radio frequencies from 32-50 megahertz (MHz).

How does EMS rebroadcast a radio signal?

Some rebroadcast by converting signals to radio and others do so by converting to microwaves. It may also convert the signal to a telephone signal and send the communications through public or dedicated telephone lines. EMS radio communication takes place in the VHF low band, VHF high band, and UHF band.

What frequency does EMS radio communication take place in?

EMS radio communication takes place in the VHF low band, VHF high band, and UHF band. VHF low band is the radio frequencies from 32-50 megahertz (MHz). They are able to follow the shape of the earth allowing communication over long distances. These frequencies are more susceptible to interference from, weather, buildings, and electrical equipment.

Why is communication important in EMS?

Communication in EMS is essential. Patients must be able to access the system, the system must be able to dispatch units, EMTs must have a means of communicating with medical direction and receiving facility, and EMTs must

be able to communicate vital information to other personnel.

What is a regional EMS system?

regional EMS system—An emergency medical service area (trade, catchment, market, patient flow, geographic or governmental) that provides essentially all of the definitive emergency medical care for all emergencies and for the most critically ill and injured patients within the area. relay—Transmission forwarded through an intermediate station.

Is the communication base station EMS a device

CE UN38.3 MSDS



Microsoft Word

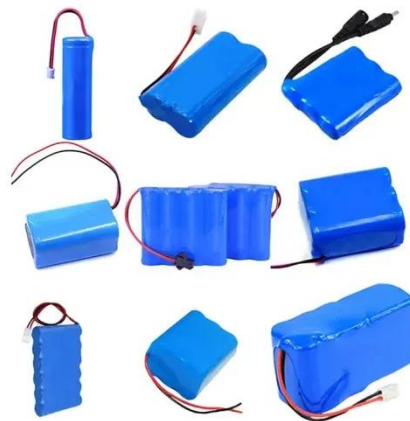
Sometimes, the base station is operated in the duplex mode, however, in EMS the portable or mobile radio is often operated in the duplex mode, and the base station at the ...

[Get Price](#)

Effective Communication and Documentation in EMS

In EMS, this may be an electrocardiogram (ECG), vital signs, or other patient-related data. To maintain order on the airwaves, the Federal ...

[Get Price](#)



Ambulance Radios: Types And Uses , ShunAuto

In the context of emergency medical services (EMS), base stations play a crucial role in facilitating communication between different parties. They enable EMTs to ...

[Get Price](#)

Communications-EMT -- Hopper Institute®

A base station is a radio operated from a fixed site such as a dispatch center, hospital, or some other location. It usually runs off community electrical power and transmits at much higher ...

[Get Price](#)



Effective Communication in EMS Systems: A Comprehensive Guide

Communication in EMS is the transmission of information between healthcare professionals, patients, and emergency dispatch centers. This seamless exchange is vital for delivering ...

[Get Price](#)

Effective Communication in EMS Systems: A Comprehensive Guide

Definitions Base Station: A fixed radio unit with a transmitter and receiver.
Cellular Telephone: A portable radio device that communicates through a network of repeater stations called ...

[Get Price](#)



Chapter 5 Objectives Flashcards , Quizlet

Base station - A dispatch and coordination center. Land mobile radio systems - Land mobile radio systems



allow communication between base, vehicles, and medical facilities. Mobile radios - ...

[Get Price](#)

Chapter 5 test Flashcards , Quizlet

Study with Quizlet and memorize flashcards containing terms like A base station is affixed to an EMS vehicle., Wireless Communications include radios and cell phones, the Department of ...

[Get Price](#)



Communications and Dispatching , Cooney's EMS Medicine

Describe common terms used in radio communication to communicate the status of a unit. Describe an emergency department base station and list types of individuals who may be ...

[Get Price](#)

EMT Ch 13 Communications Flashcards , Quizlet

Study with Quizlet and memorize flashcards containing terms like Communications Systems, Base stations, Mobile radios and more.

[Get Price](#)


Free Flashcards and Study Games about EMT Chapter 5

Study free flashcards about EMT Chapter 5 created by mlauihoff to improve your grades. Matching game, word search puzzle, and other study games also available.

[Get Price](#)

Chapter 2: Preparatory Part 2 - Emergency Medical Responder

Base Station: A stationary radio located in a strategic position, such as a hospital, dispatch center, or a high vantage point, enabling wide-area communication coverage.

[Get Price](#)


Chapter 15 Practice Quizzes Flashcards , Quizlet

Study with Quizlet and memorize flashcards containing terms like Which of the following terms BEST describes a device that picks up signals from lower-

power radio units ...

[Get Price](#)



Ambulance Radios: Types And Uses , ShunAuto

In the context of emergency medical services (EMS), base stations play a crucial role in facilitating communication between different parties. They ...

[Get Price](#)



Chapter 15 Study Plan Flashcards

B. Federal Communications Commission. The Federal Communications Commission (FCC) has jurisdiction over all radio operations in the United States, including those used by EMS ...

[Get Price](#)

Effective Communication and Documentation in EMS , Course Hero

In EMS, this may be an electrocardiogram (ECG), vital signs, or other patient-related data. To maintain

order on the airwaves, the Federal Communications Commission ...

[Get Price](#)



Chapter 5 Study Plan Flashcards , Quizlet

Your EMS agency wants to increase the power output of the base station in order to cover a larger area without needing a repeater. Which federal agency is responsible for establishing ...

[Get Price](#)

EMT-B Chapter 4

scanner VHF and UHF channels designated exclusively for EMS use MED channels Vehicle-mounted device that operates at a lower frequency than a base station mobile radio A process ...

[Get Price](#)



Emergency Care: Chapter 17: Communication+Documentation ...

Home Flashcards Medical Emergency Care: Chapter 17: Communication+DocumentationShared Flashcard Set

[Get Price](#)

EMR Chapter 4 Flashcards , Quizlet

Study with Quizlet and memorize flashcards containing terms like The purpose of a communications system is to:, Which of the following statements regarding a base station is ...

[Get Price](#)

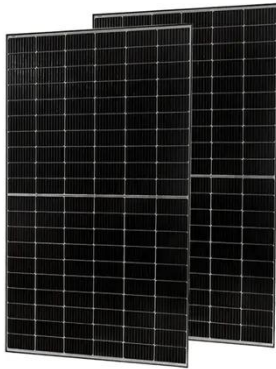
What is the difference between Base Station and ...

Base Station and Repeater are two important components in wireless communication systems. They play different roles in communication networks ...

[Get Price](#)

EMT Hybrid

Which of the following BEST describes a base station? A two-way radio at a fixed site tA device used to receive and then amplify transmissions that must be carried over long distances A two ...

[Get Price](#)

L74

Repeater stations eliminate communication problems, such as the inability to hear, which can occur between a base station and another mobile unit communicating with the same base.

[Get Price](#)

EMS System Communications - georgiaemsacademy

The mobile radio is a vehicle mounted device that is designed to transmit with lower power (typically 20 to 50 watts) than the base station radio (due to the 12 volt radio system in ...

[Get Price](#)

Contact Us

For catalog requests, pricing, or partnerships, please visit:
<https://www.barkingbubbles.co.za>