

SolarInvert Energy Solutions

Network Green Base Station and Communication Green Base Station



Overview

What is a green base station?

This proliferation of BSs has resulted in consequential increase in energy consumption and Green House Gases (GHGs) emission. Several techniques have been deployed to reduce the energy consumption of the base station in what is called a green base station.

Are green cellular base stations sustainable?

This study presents an overview of sustainable and green cellular base stations (BSs), which account for most of the energy consumed in cellular networks. We review the architecture of the BS and the power consumption model, and then summarize the trends in green cellular network research over the past decade.

Can a green base station reduce energy consumption?

Several techniques have been deployed to reduce the energy consumption of the base station in what is called a green base station. This paper presents an insight into these approaches and highlights key challenges and potential research directions.

Why is a base station important?

Environmental protection is a global concern, and for telecom operators and equipment vendors worldwide, developing green, energy-saving technologies for wireless communications is a priority. A base station is an important element of a wireless communications network and often the main focus of power saving in the whole network.

Where are 5G communication base stations located?

Furthermore, 5G communication base stations with energy storage are located at nodes 6, 8, 15, and 31, each group containing 100 base stations, labeled as groups 1, 2, 3, and 4. The fundamental parameters of the base

stations are listed in Table 1.

What should a base station do in a wireless communications network?

In a wireless communications network, the base station should maintain high-quality coverage. It should also have the potential for upgrade or evolution. As network traffic increases, power consumption increases proportionally to the number of base stations. However, reducing the number of base stations may degrade network quality.

Network Green Base Station and Communication Green Base Station



Green and Sustainable Cellular Base Stations: An Overview and ...

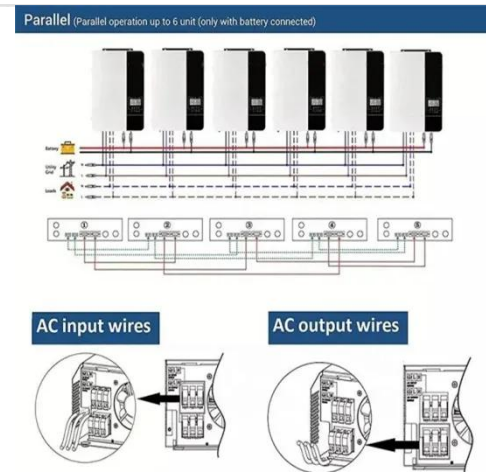
Energy efficiency and renewable energy are the main pillars of sustainability and environmental compatibility. This study presents an overview of sustainable and green cellular ...

[Get Price](#)

Breaking Down Base Stations - A Guide to Cellular Sites

Every day, billions of people use their phones and devices to connect to each other around the globe. This is made possible by cellular networks operating through hundreds ...

[Get Price](#)



Green Base Station Solutions and Technology

Saving power in base stations is therefore the primary focus in green wireless network development. This paper discusses green base stations in terms of system ...

[Get Price](#)

An Insight into Deployments of Green Base Stations (GBSs) for ...

Several techniques have been deployed to reduce the energy consumption of the base station in what is called a green base station. This paper presents an insight into these ...

[Get Price](#)



Multi-objective cooperative optimization of communication base station

This paper develops a method to consider the multi-objective cooperative optimization operation of 5G communication base stations and Active Distribution Network ...

[Get Price](#)

Green Communications

The main goal of designing green base stations is to save energy and reduce power consumption while guaranteeing user service and coverage and ensuring the base ...

[Get Price](#)



Revolutionising Connectivity with Reliable Base Station Energy ...

Discover how base station energy storage empowers reliable telecom connectivity, reduces OPEX, and



supports hybrid energy.

[Get Price](#)

A Game Theoretic Analysis for Power Management and Cost ...

Within the cellular network, the base transceiver station (BTS) constitutes more than 56% of the overall cellular network energy consumption.

[Get Price](#)



1mwh (500kw/1mw)
AIR COOLING
ENERGY STORAGE CONTAINER



Base Station Definition

A base station also provides a bridged connection to another network, like an Ethernet -wired LAN or the Internet. Some base stations ...

[Get Price](#)

What is a base station?

In telecommunications, a base station is a fixed transceiver that is the main communication point for one or more wireless mobile client devices.

[Get Price](#)





9

Cellular wireless access networks have been identified as the main consumer of energy in the wireless industry, while statistics show that radio base stations (RBS) in such a network ...

[Get Price](#)

Base Station's Role in Wireless Communication Networks

A base station is fundamental in wireless communication, because it facilitates the connection between your device and the wider network. Without base stations, mobile data and voice ...

[Get Price](#)



Dynamic Base Station or Relay Station deployment and small cell ...

Dynamic Base Station or Relay Station deployment and small cell On/Off strategy for green ultra dense networks

[Get Price](#)



Power Base Station

Base station power refers to the output power level of base stations, which is defined by specific maximum limits (24 dBm for Local Area base stations and 20 dBm for Home base stations) ...

[Get Price](#)

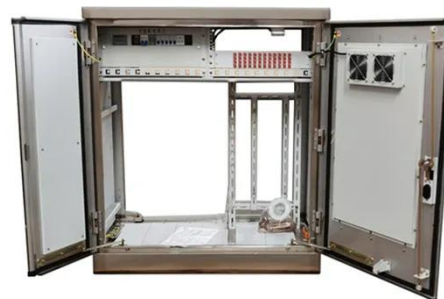
Teltronic Introduces New Green Communications Base Station

Spain's Teltronic has introduced its new GBS (Green Base Station) during the Critical Communications World event. This next-generation TETRA base station integrates ...

[Get Price](#)

Low-Carbon Sustainable Development of 5G Base Stations in China

Goncalves et al. (2020) explored carbon neutrality evaluation of 5G base stations from the perspective of network structure and carbon sequestration. Despite the growing ...

[Get Price](#)

Energy performance of off-grid green cellular base stations

However, the design of a green mobile network requires the dimensioning of the energy harvesting and storage systems

through the estimation of the network's energy ...

[Get Price](#)



Toward Green Network: an Expanding of Base Station Energy ...

Toward Green Network: an Expanding of Base Station Energy-Saving Algorithm in City-Scale Deployment Published in: IEEE Internet of Things Journal (Volume: PP, Issue: 99)

[Get Price](#)



Base Stations and Cell Towers: The Pillars of Mobile ...

Base stations and cell towers are critical components of cellular communication systems, serving as the infrastructure that supports seamless ...

[Get Price](#)

Teltronic Introduces New Green Communications ...

Spain's Teltronic has introduced its new GBS (Green Base Station) during the Critical Communications World event. This next-generation TETRA ...

[Get Price](#)


9

Various approaches have been proposed to reduce the energy consumption of an RBS, for instance, passive cooling techniques, energy-efficient backhaul solutions, and distributed base ...

[Get Price](#)

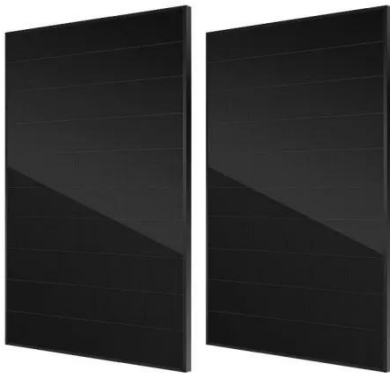
Research on future 6G green wireless networks

In mobile communication networks, base stations are the largest consumers of energy. According to GSMA's 2021 study of 31 networks, base station energy consumption ...

[Get Price](#)


What is a base station and how are 4G/5G base ...

Base station is a stationary trans-receiver that serves as the primary hub for connectivity of wireless device communication.

[Get Price](#)

Energy-Efficient Base Stations , part of Green Communications

This chapter aims a providing a survey on the Base Stations functions and architectures, their energy consumption at component level, their possible improvements and the major problems ...

[Get Price](#)

Green Base Station Solutions and Technology

Saving power in base stations is therefore the primary focus in green wireless network development. This paper discusses green base ...

[Get Price](#)

Multi-objective cooperative optimization of communication base

...

This paper develops a method to consider the multi-objective cooperative

optimization operation of 5G
communication base stations and Active
Distribution Network ...

[Get Price](#)

LiFePO₄ Battery,safety

Wide temperature: -20~55°C

Modular design, easy to expand

The heating function is optional

Intelligent BMS

Cycle Life: > 4000

Warranty:10 years



Contact Us

For catalog requests, pricing, or partnerships, please visit:
<https://www.barkingbubbles.co.za>