

SolarInvert Energy Solutions

Photovoltaic modules bicrystalline bifacial double- glass



**European
Warehouse**



7-15 days
Delivery

ONE-STOP SOLUTION

65kWh 30kW

130kWh 30kW

130kWh 60kW



Overview

What is a bi-facial solar module?

Bi-Facial Modules: Bi-facial modules, on the other hand, constitute a variant of solar panels capable of harnessing sunlight from both the front and rear surfaces of the module, thereby doubling the energy generation potential vis-à-vis traditional mono-facial modules.

What is a bifacial PV module?

Unlike traditional PV modules, bifacial modules can generate power from both the front and the back, resulting in higher power output within the same space. This has made them a popular choice for many types of installations.

How are bifacial solar cells encapsulated?

Bifacial solar cells can be encapsulated in modules with either a glass/glass or a glass/ transparent backsheet structure.

Why do bifacial modules have glass panels?

Manufacturers tend to prefer glass panels on both the front and rear sides of a bifacial module because these designs tend to better transmit light and are more resistant to inclement weather, moisture permeation, corrosion, and more excellent mechanical load ability.

Are bifacial solar panels a good choice?

To stay aligned with the PV trend and get the most out of your solar panels, bifacial PV modules are an excellent choice. While they require a slightly higher investment, they offer a much higher output in comparison to their monofacial counterparts, thus compensating for the additional cost over the long term.

What is a bifacial G-B module?

Bifacial G-B modules use a 3.2 mm-thick tempered glass on the front, delivering superior impact strength and durability in comparison to the 2 mm-2.1 mm thick heat-treated glass typically used in G-G modules. The glass used in PV modules generally has a UV transmittance of 40%-50%.

Photovoltaic modules bicrystalline bifacial double-glass



Sunpal Bifacial Double Glass 680W 690W 700W Solar Module ...

Go greener with Sunpal's 210mm 132 half cells bifacial 675W 680W 690W 700W double glass solar modules. High power outputs are perfect for diverse commercial applications.

[Get Price](#)

For N-type Bifacial Technology, Dual Glass Structure is Preferred

Interest in N-type bifacial modules has rapidly increased due to their ability to generate more power than conventional P-type bifacial thanks to their higher bifacial factor, ...

[Get Price](#)



Bifacial photovoltaic panels: the new mainstream?

In the SUPER PV project, silicon PV panel manufactures (Apollon Solar & Solitek) are deeply involved in the development and ...

[Get Price](#)

What are bifacial solar modules and how do they work?

Bifacial solar modules offer many advantages over traditional solar panels. Power can be produced from both sides of a bifacial module, ...

[Get Price](#)



How bifacial PV modules work: Factors that affect rear ...

To learn more about key factors to consider when planning solar power stations with bifacial modules, and the benefits these modules can ...

[Get Price](#)

Development and challenges of bifacial photovoltaic technology ...

Bifacial photovoltaic (bPV) modules can both obtain the front and rear light to get higher power output, which has attracted extensive attention and is expected to substitute for ...

[Get Price](#)



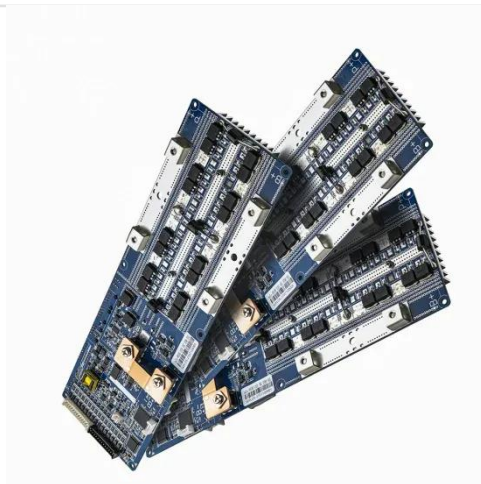
Monocrystalline PERC Bifacial Dual Glass Solar PV ...

EVO 6 Series Mono PERC 120 Half Cells 590W 595W 600W 605W 610W Bifacial Dual Glass Solar Module Based on 210mm silicon wafer and 120 half-cut ...

[Get Price](#)


Bifacial Solar Cells and Modules - PV-Manufacturing

Therefore, manufacturers have begun to provide a tougher module with longer warranties (30 years) and higher power output due to the combination of sturdier glass-glass structure, ...


[Get Price](#)


The Difference Between Bifacial Module and Double Glass Bifacial Module

Bifacial solar modules and double glass bifacial solar modules are both types of solar panels designed to capture sunlight from both sides (front and back) to generate electricity.

[Get Price](#)

The Difference Between Bifacial Module and Double ...

Bifacial solar modules and double glass bifacial solar modules are both types of solar panels designed to capture sunlight

from both sides (front ...

[Get Price](#)



7 Advantages of Bifacial Glass-Backsheet Modules over Glass-Glass Modules

Unlike traditional PV modules, bifacial modules can generate power from both the front and the back, resulting in higher power output within the same space. This has made ...

[Get Price](#)

Bifacial Solar Cells and Modules - PV-Manufacturing

Therefore, manufacturers have begun to provide a tougher module with longer warranties (30 years) and higher power output due to the combination of ...

[Get Price](#)

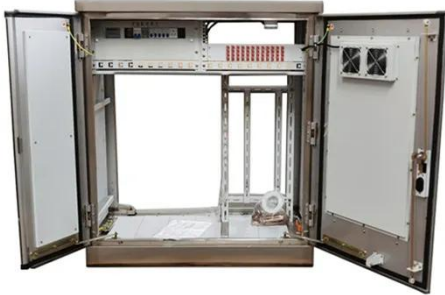


EVO 6N Bifacial HJT Half Cell Double-glass Solar ...

EVO 6N Bifacial HJT Half Cell Double-glass Solar Module 645W 640W 635W 630W 625W The 645W HJT module

combines cutting-edge technology, ...

[Get Price](#)



Bifacial Solar Modules , Maysun Solar

Bifacial photovoltaic modules are available in two types: single-glass bifacial modules and double-glass bifacial modules. Single-glass bifacial modules are ...

[Get Price](#)



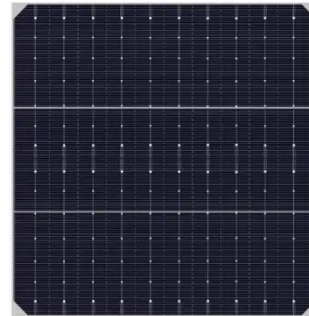
Key Differences Between Half-Cut Modules & Bi ...

Among these innovations stand half-cut modules and bi-facial modules, both garnering acclaim in recent years for their capacity to augment ...

[Get Price](#)

Double the strengths, double the benefits

Explore IBC SOLAR's double glass module offerings At IBC SOLAR, we are committed to providing cutting-edge photovoltaic solutions ...

[Get Price](#)


Lithium battery parameters

Product capacity: 100Ah

Product size: 135*197*35mm

Product weight: 1.82kg 197mm / 7.7in

Product voltage: 3.2V

internal resistance: within 0.5



Bifacial Solar Modules , Maysun Solar

Traditional monofacial panels use an opaque backsheet, whereas bifacial solar panels incorporate a reflective backsheet or a double-glass layer, enclosing ...

[Get Price](#)

N Type HJT Bifacial Dual Glass 615W 620Wp ...

EVO 6 Pro 120 Half Cells 615W 620W 625W 630Wp 635 Watt Bifacial Dual Glass Solar Panel This 120 half cell HJT bifacial double glass solar panel provides a ...


[Get Price](#)

JinkoSolar: Transparent backsheet vs dual glass

Bifacial with transparent backsheet and bifacial with dual glass have their own advantages and disadvantages. The radar chart can help customers evaluate

the two products ...

[Get Price](#)



How bifacial PV modules work: Factors that affect rear side power.

To learn more about key factors to consider when planning solar power stations with bifacial modules, and the benefits these modules can bring to any solar project, download ...

[Get Price](#)



7 Advantages of Bifacial Glass-Backsheet Modules ...

Unlike traditional PV modules, bifacial modules can generate power from both the front and the back, resulting in higher power output within ...

[Get Price](#)

Choose Right: Bifacial vs Glass-Glass Solar Panels Decision Guide

1 day ago · Understanding Bifacial Technology: Double-Sided Power Generation How Bifacial Panels Actually Work Bifacial panels capture sunlight

from both front and back surfaces. ...

[Get Price](#)



Key Differences Between Half-Cut Modules & Bi-Facial Modules

Among these innovations stand half-cut modules and bi-facial modules, both garnering acclaim in recent years for their capacity to augment solar energy generation.

[Get Price](#)

Bifacial Solar Modules , Maysun Solar

Traditional monofacial panels use an opaque backsheet, whereas bifacial solar panels incorporate a reflective backsheet or a double-glass layer, enclosing the solar cells between these two ...

[Get Price](#)



Comparison of Glass/Glass and Glass/Backsheet PV Modules Using Bifacial

Bifacial solar cells can be encapsulated in modules with either a glass/glass or a



glass/backsheets structure. A glass/backsheets structure provides additional module current ...

[Get Price](#)

Bifacial Solar Panels: What are They and How Do ...

Solar PV panels are made up of one of two different types of crystalline cells; monocrystalline or polycrystalline cells. The majority of ...

[Get Price](#)



Bifacial photovoltaic panels: the new mainstream?

In the SUPER PV project, silicon PV panel manufacturers (Apollon Solar & Solitek) are deeply involved in the development and commercialization of high-quality bifacial PV ...

[Get Price](#)

Bifacial Solar Panels: A to Z Guide

The light absorbed in the back is the light that is reflected from the ground where the solar panels are installed. Bifacial solar panels, often called double-sided solar panels, are ...

[Get Price](#)


Monofacial vs. Bifacial Solar Panels: What's Best for ...

Compare monofacial vs bifacial solar panels to understand their design, energy output, efficiency, and more before choosing the right solar ...

[Get Price](#)

Bifacial solar panels: Benefits & Installation Scenarios ...

What is a bifacial solar panel? A bifacial solar panel is a type of solar module that is designed to capture sunlight on both the front and rear sides. Unlike ...

[Get Price](#)

☒ IP65/IP55 OUTDOOR CABINET

☒ OUTDOOR MODULE CABINET

☒ OUTDOOR 5G BASE STATION CABINET

☒ WATERPROOF

Contact Us

For catalog requests, pricing, or partnerships, please visit:
<https://www.barkingbubbles.co.za>