

SolarInvert Energy Solutions

Photovoltaic panel power attenuation rate in winter



Overview

Solar panels can be effective in winter, capturing approximately 70-80% of their rated output even in snowy conditions due to their design and the reflective properties of snow. How to optimize solar panel efficiency in winter?

By using a battery storage system, you can maximize the utilization of solar energy throughout the day, even in winter conditions. In order to optimize solar panel efficiency in winter, it's important to monitor your energy consumption. By understanding your energy usage patterns, you can adjust your solar panel system accordingly.

Can solar panels produce energy in winter?

During winter, solar energy output can be affected by factors such as shorter daylight hours and decreased sunlight intensity. In addition, inclement weather conditions like snow or cloudy skies can further reduce the efficiency of solar panels. Can solar panels still generate energy in winter?

Yes, solar panels can still produce energy in winter.

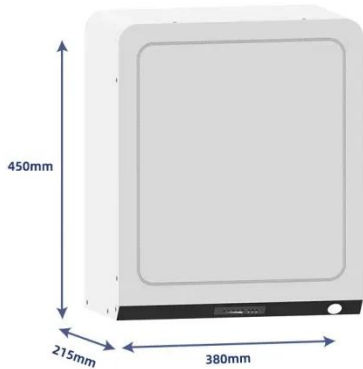
What factors affect solar output in winter?

One of the primary factors affecting solar output in winter is the shorter duration of daylight. With fewer daylight hours available, solar panels have less time to absorb sunlight and convert it into electricity. This reduced exposure to sunlight can result in lower energy production.

Why should I Tilt my solar panels in the winter?

During the winter months, the sun is typically lower in the sky, so tilting the panels at a steeper angle can help maximize sunlight exposure. By optimizing the tilt angle, you can enhance the efficiency of your panels and increase energy production.

Photovoltaic panel power attenuation rate in winter



Are Solar Panels Effective in Winter? A Comparison of ...

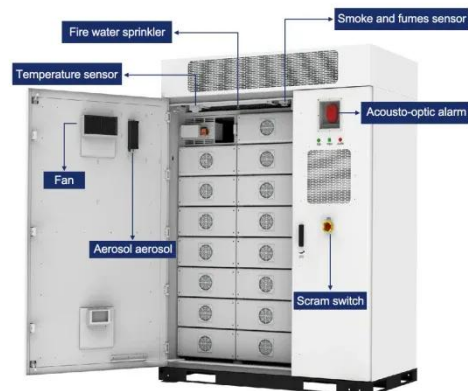
Solar panels can be effective in winter, capturing approximately 70-80% of their rated output even in snowy conditions due to their design and the reflective properties of snow.

[Get Price](#)

Performance of Solar Panels in Winter Months: Facts and ...

Solar panels can generate electricity even in snowy and cloudy weather because they require photons from sunlight, not temperature, to produce electricity. Although the ...

[Get Price](#)



National standard for photovoltaic panel attenuation rate

As the photovoltaic (PV) industry continues to evolve, advancements in National standard for photovoltaic panel attenuation rate have become critical to optimizing the ...

[Get Price](#)



Factors affecting photovoltaic power generation in winter

As a result, the seasonal output curve of photovoltaic (PV) power plants typically reaches its lowest point during winter. While reduced power generation in winter is normal, addressing ...

[Get Price](#)



Solar output in the winter: what to expect, and how to optimize it

Explore how solar energy is affected in winter and learn tips to maximize your panels' efficiency during the colder months.

[Get Price](#)

How Much Energy Does a Solar Panel Produce in Winter?

That implies Solar Panel Power produced in Winter during the day but not at night (but this isn't a problem if you have a battery, so keep reading). Stronger sunlight means more electricity ...

[Get Price](#)



How much solar power can generate in winter , NenPower

Solar energy production in winter is influenced by several factors, including the amount of sunlight received, geographical location, panel angle, and

weather conditions.

[Get Price](#)



Do Solar Panels Work in Winter?: Unveiling the Truth

Solar panels rely on sunlight, not heat, to generate power. Even with shorter daylight hours and snowy conditions, they continue to function. ...

[Get Price](#)



Solar output in the winter: what to expect, and how to ...

Explore how solar energy is affected in winter and learn tips to maximize your panels' efficiency during the colder months.

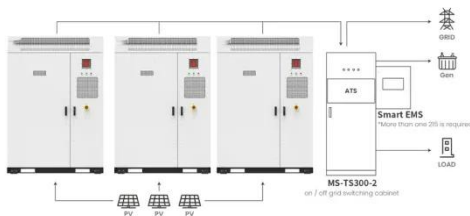
[Get Price](#)

Why Your Panels Are Still Efficient During Solar Winter

Winter is a great time for this process, because when the electrons on the solar panels are cold, they are resting with less energy. Then, when the sunlight hits

them, this high ...

[Get Price](#)



Application scenarios of energy storage battery products

Is the attenuation rate of photovoltaic panels high

Does rain affect PV power attenuation? ower attenuation rate reaches 13.9% after two weeks. Even though a small amount of rainfall has a certain cleaning effect on the PV modules, which ...

[Get Price](#)

8 Solar Panel Performance During Winter Months That Maximize Power

Winter brings significantly shorter days with the sun lower in the sky affecting solar energy production. Your panels receive 4-5 fewer hours of direct sunlight compared to ...

[Get Price](#)



Jingao Photovoltaic Panel Attenuation Rate: What Solar Investors ...

The Silent Profit Killer: Photovoltaic Panel



Degradation Did you know that the average solar panel loses 19% productivity over 25 years? Jingao's photovoltaic technology challenges this

...

[Get Price](#)

National standard for photovoltaic panel attenuation rate

Output power attenuation rate prediction for photovoltaic panels considering dust deposition in hazy weather Abstract: Photovoltaic (PV) power prediction is a key technology to improve the



[Get Price](#)



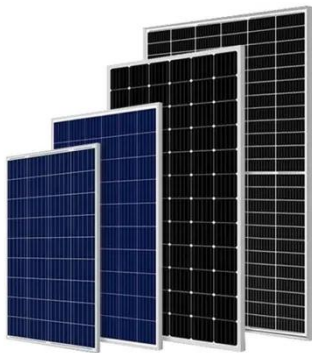
8 Solar Panel Performance During Winter Months ...

Winter brings significantly shorter days with the sun lower in the sky affecting solar energy production. Your panels receive 4-5 fewer hours of ...

[Get Price](#)

Why Your Panels Are Still Efficient During Solar Winter

Winter is a great time for this process, because when the electrons on the solar panels are cold, they are resting with less energy. Then, ...

[Get Price](#)

How much solar power can generate in winter

Solar energy production in winter is influenced by several factors, including the amount of sunlight received, geographical location, panel angle, ...

[Get Price](#)

Solar panel attenuation rate

Solar panel attenuation rate What is solar panel performance degradation? Degradation is the term used to describe the gradual decrease in solar panel output over time. At all ...

[Get Price](#)

Understanding Solar Photovoltaic System Performance

This report presents a performance analysis of 75 solar photovoltaic (PV) systems installed at federal sites, conducted by the Federal Energy

Management Program (FEMP) with support ...

[Get Price](#)



Photovoltaic panel component attenuation formula

What is the power output of a photovoltaic solar cell? You have learnt previously that the power output of a photovoltaic solar cell is given in watts and is equal to the product of voltage times ...

[Get Price](#)



How to Calculate Solar Panel KWp (KWh Vs. KWp)

How to Calculate Solar Panel KWp: The technical specifications label on the back of your solar pane will tell you its KWp.

[Get Price](#)



Do Solar Panels Work in Winter?: Unveiling the Truth

Yes, solar panels work in winter. They generate electricity even on cloudy days. Cool temperatures can improve

efficiency. As winter approaches, many wonder about solar ...

[Get Price](#)



Solar Angle Calculations: Maximize Your Panel ...

Maximize panel efficiency with our guide on solar angle of incidence calculator. Learn optimal angles, seasonal adjustments, and useful ...

[Get Price](#)

Analyze the attenuation rate of solar PV modules

Analyze the attenuation rate of solar PV modules The attenuation of solar PV modules mainly has initial photo-attenuation and aging attenuation. In addition, there are PID potentials that can ...

[Get Price](#)

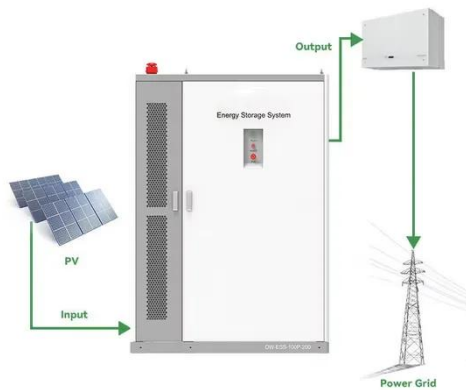


How much electricity do solar panels produce?

How much electricity do solar panels produce? Solar panels generate electricity during the day. They generate

more electricity when the sun shines directly on ...

[Get Price](#)



Output power attenuation rate prediction for photovoltaic panels

Photovoltaic (PV) power prediction is a key technology to improve the control and scheduling performance of PV power plant and ensure safe and stable grid operation with high ...

[Get Price](#)



Power attenuation rate of photovoltaic panels in winter

While winter presents its unique challenges to solar panel efficiency, there are several practical strategies you can With a solar panel system in place, homeowners can offset a significant ...

[Get Price](#)

Standard value of attenuation rate of photovoltaic panels

Output power attenuation rate prediction for photovoltaic panels considering dust deposition in hazy weather Abstract: Photovoltaic (PV) power prediction is a

key technology to ...

[Get Price](#)



Contact Us

For catalog requests, pricing, or partnerships, please visit:
<https://www.barkingbubbles.co.za>