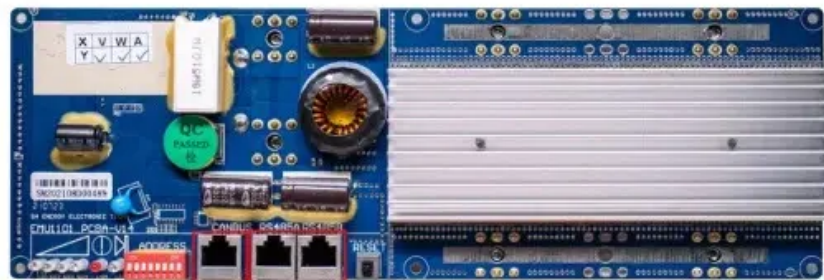


SolarInvert Energy Solutions

Solar panel pressure standards



RS485
Communication between battery and inverters
Baud rate:9600bps

RS485 Interface
Communication between parallel packs or BMS and PC
Baud rate:9600bps



Overview

Solar panels typically endure loads up to 2400 Pa or more, 2. Factors such as wind, snow, and installation angle influence this capacity, 3. Manufacturers conduct rigorous testing to certify their products, 4. Understanding the parameters affecting their durability ensures safe implementation.

Solar panel pressure standards



Photovoltaic panel pressure test standard

A full and comprehensive overview about solar panel certifications, testing procedures and certification developments are covered by our popular Solar Panel Certification Guide which is

[Get Price](#)

Catching Up With Solar PV Structural Requirements

IMPORTANT: A proposal under development for ASCE 7-22 will specifically disallow this force to be transmitted through PV panels, unless specifically tested or justified for that condition

[Get Price](#)



DETAILS AND PACKAGING



1 USER MANUAL PDF 2 RJ45 Cable For RS485/CAN 3 Battery in Parallel Cables
4 RJ45 TO USB Monitor Cable 5 M8 Terminal*4

Solar Panel Safety Standards That Protect Your ...

Solar panel standards form the backbone of photovoltaic system safety, reliability, and performance across the global renewable energy ...

[Get Price](#)

Understanding Windspeed pressure

on Solar Modules ...

Windspeed to Pressure Conversion chart
- June 2024 Modules level- wind load
Referring to the data sheets of most
solar modules, it's ...

[Get Price](#)



Local and overall wind pressure and force coefficients for solar panels

The effect of building height on the solar collector total load is minimal, whereas corner panels are subjected to higher net loads for critical azimuths. Simplified net pressure ...

[Get Price](#)

Understanding Windspeed pressure on Solar Modules, Solar ...

Explore the role of NSCP in solar energy systems. Use the windspeed table to determine pascals pressure on solar structures and modules.

[Get Price](#)



Standard, Specification & Benchmark Cost , MINISTRY OF NEW ...

Specification Guidelines on "Design Specifications, Performance Guidelines, and Testing Procedure for Solar Cold



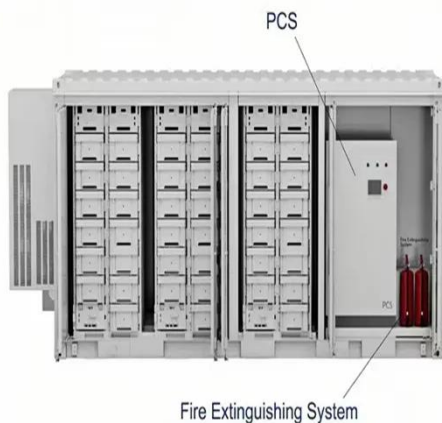
Storage with Thermal Energy Storage Backup" (2 MB, PDF) ...

[Get Price](#)

(PDF) A Study on Wind Load Calculations for Solar Photovoltaic

A series of wind tunnel experiments have been performed to evaluate wind loads on solar panels on flat roofs, mainly focusing on module forces calculated from area-averaged ...

[Get Price](#)



Updates on ASCE 7 Standard for Solar PV Systems

IMPORTANT: A proposal under development for ASCE 7-22 will specifically disallow this force to be transmitted through PV panels, unless specifically tested or justified for that condition

[Get Price](#)

45

This document provides a standard operating procedure for safely wet cleaning solar modules with water. It outlines responsibilities, required tools

and ...

[Get Price](#)



**European
Warehouse**



7-15 days
Delivery

ONE-STOP SOLUTION

65kWh 30kW

130kWh 30kW

130kWh 60kW

Water rules for cleaning solar panels!

The water pressure being referred to here, is the force with which the water will exit the pipe being used to clean the panels. It is also an ...

[Get Price](#)

Microsoft Word

Solar Rating & Certification Corporation Standard 300 Minimum Standards for Solar Water Heating Systems (SRCC OG-300) All equipment shall be new, undamaged, fully ...

[Get Price](#)



Solar Panel Wind Load Calculation ASCE-7-16 , SkyCiv

A fully worked example of Ground-mounted Solar Panel Wind Load and Snow Pressure Calculation using ASCE 7-16.

[Get Price](#)



Standard Solar Panel Sizes And Wattages (100W ...

Rather, we get the typical sizes of solar panels by the number of cells (which is quite useless). There are 3 standardized sizes of solar panels, namely: 60-cell ...

[Get Price](#)



How to Find Wind Pressure on Solar Panels

In this article we will investigate the procedure for calculating the design wind pressure on rooftop solar panels per ASCE 7-16 design code. I feel like the best way to ...

[Get Price](#)

ASCE 7-22 Method for Calculating Uplift on PV Modules

ASCE 7-22 Method for Calculating p_{lift} on PV Modules
 Notation L_p = Panel chord length. p = uplift wind pressure
 p_a = Solar panel pressure equalization

factor, defined in Fig. 29.4-8. $\eta_E = \dots$

[Get Price](#)



Max water pressure allowable on solar panels

The discussion centers on determining the maximum allowable water pressure from a pressure washer on solar panels, acknowledging that pressure washing is generally not ...

[Get Price](#)

Wind Calculations and Solar Panels

While solar panels primarily depend on sunlight, wind conditions play a critical role in their installation and performance. Wind calculations are essential for assessing the ...

[Get Price](#)



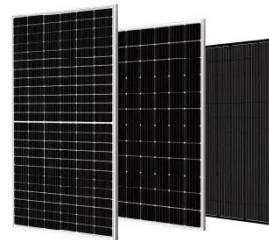
Understanding Solar Panel Wind Load Calculation

Solar panels are now common on rooftops worldwide, providing clean and sustainable energy by harnessing the sun's power. However, it's essential to ...

[Get Price](#)


How much pressure do flat solar panels bear?

Solar panel design incorporates various engineering principles to ensure robustness. The materials used in flat solar panels, usually tempered ...


[Get Price](#)


How much pa can a solar panel bear? , NenPower

The maximum weight that solar panels can support typically refers to the pressure exerted by snow or wind loads, which is measured in pascals (Pa). Most solar panels have ...

[Get Price](#)

How to Find Wind Pressure on Solar Panels

In this article we will investigate the procedure for calculating the design wind pressure on rooftop solar panels per ASCE 7-16 design code. I ...

[Get Price](#)

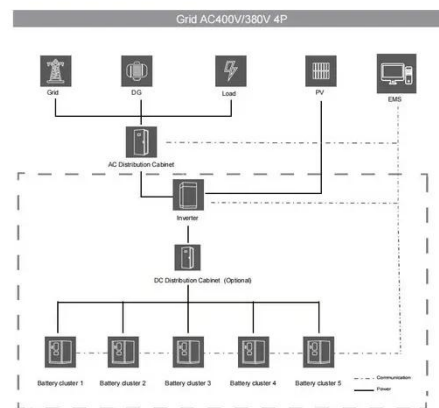

Microsoft Word

The PV power plants consist on systems of several solar panels. Wind load pressure coefficient evaluation, by design code, for a single solar panel considered as a canopy roof, neglect the ...

[Get Price](#)

Findings on design wind loads for solar panels

Design all clamps, rails and brackets for the net pressures you have calculated. If the panels are roof-mounted, check the roof structure for ...

[Get Price](#)


Updates on ASCE 7 Standard for Solar PV Systems

Find out how the ASCE 7 standard affects wind load, seismic load, and tornado load considerations for solar photovoltaic (PV) systems.


[Get Price](#)

Understanding Windspeed pressure on Solar Modules ...

Explore the role of NSCP in solar energy systems. Use the windspeed table to determine pascals pressure on solar structures and modules.

[Get Price](#)


Understanding PV System Standards, Ratings, and Test Conditions

PV modules adhere to specific standards to ensure safety and reliability. These standards include compliance with industry regulations such as UL 1703 and IEC 61215. ...

[Get Price](#)

Contact Us

For catalog requests, pricing, or partnerships, please visit:
<https://www.barkingbubbles.co.za>