

SolarInvert Energy Solutions

The distance between the battery cabinet and the wall in the computer room



Overview

Working space shall be measured from the edge of the battery cabinet, racks, or trays. For battery racks, there shall be a minimum clearance of 25 mm (1 in.) between a cell container and any wall or structure on the side not requiring access for maintenance. How much space do you need for a battery system?

Spaces about battery systems shall comply with 110.26. Working space shall be measured from the edge of the battery cabinet, racks, or trays. For battery racks, there shall be a minimum clearance of 25 mm (1 in.) between a cell container and any wall or structure on the side not requiring access for maintenance.

What is the minimum clearance for a battery rack?

For battery racks, there shall be a minimum clearance of 25 mm (1 in.) between a cell container and any wall or structure on the side not requiring access for maintenance. Battery stands shall be permitted to contact adjacent walls or structures, provided that the battery shelf has a free air space for not less than 90 percent of its length.

Can a battery be installed in a computer room?

Sometimes they are installed in the same room as the UPS (i.e., electrical equipment room). Local or regional codes may dictate whether batteries are permitted in an electrical room. Smaller UPS systems (e.g, up to 250 kVA) are commonly installed directly in the computer room along with their respective battery cabinets.

Where should a battery be stored?

The best options are outside of habitable rooms if there is a suitably non-combustible material (see below) between the battery and the habitable room. Other options include, a garage, laundry, or storage room if the appropriate clearances between windows, doors, and appliances are maintained.

How many cells can a battery cabinet hold?

One cabinet should be able to hold at least one complete string of cells. Best practice is that strings should not be split between two cabinets in order to ensure reliability of the entire string. Figure 1 - Battery cabinet with top terminal cells.

Can a battery be installed on a wall?

Materials deemed suitably non-combustible based on AS 1530.1: When installing the battery on a wall shared with a habitable room that is made of combustible material (e.g. wood), a non-combustible barrier must be placed between the battery and the wall.

The distance between the battery cabinet and the wall in the compo



Work Space about battery racks , Information by Electrical

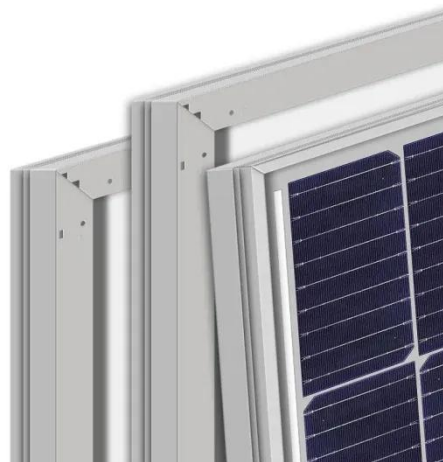
Working space about the battery systems shall comply with 110.26. Working clearance shall be measured from the edge of the battery rack. Working space is only required ...

[Get Price](#)

Safety Clearance Recommendations for Electrical Panel

One Entrance at each end of the equipment. Get access to premium HV/MV/LV technical articles, electrical engineering guides, research ...

[Get Price](#)



1926.441

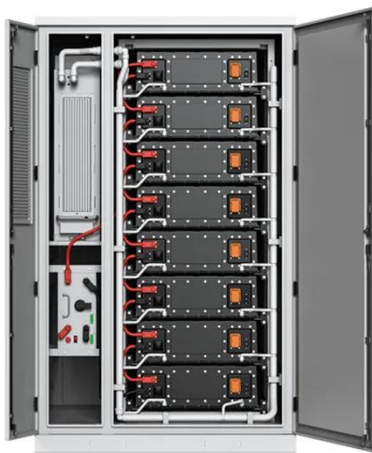
Batteries of the unsealed type shall be located in enclosures with outside vents or in well ventilated rooms and shall be arranged so as to prevent the escape of fumes, gases, or ...

[Get Price](#)

The Optimal Distance Between Wall And Base Kitchen Cabinet: ...

This comprehensive guide provides all the information you need to know about the ideal distance between a wall and a base kitchen cabinet. Discover the optimal measurements and factors to ...

[Get Price](#)



Requirements for the Design of ICT rooms

When fitting out ICT rooms it is important to be actively involved in the design of the rooms in terms of width/depth/height, raised floors, location of equipment racks and room cooling units ...

[Get Price](#)

480.9 Battery Locations.

Working space shall be measured from the edge of the battery cabinet, racks, or trays. For battery racks, there shall be a minimum clearance of 25 mm (1 in.) between a cell container and any ...

[Get Price](#)



Ideal Kitchen Layout: Island-To-Cabinets Spacing , ShunShelter

The standard distance between kitchen islands and surrounding cabinets or walls is between 36 and 48 inches. This



distance provides ample room for movement and ...

[Get Price](#)

Battery Cabinets vs. Battery Racks

Because air exchanges in most computer rooms far exceed the ventilation of a normal work environment, placement of battery cabinets in a ...

[Get Price](#)



How Much Space Should You Leave Between Your Desk And Wall?

The distance between your desk and wall can affect your productivity, workflow, and even your posture. In this article, we'll guide you through the process of determining the ideal ...

[Get Price](#)

The Optimal Distance Between Kitchen Cabinets And Walls: How ...

When planning your kitchen layout, it's important to consider the distance between your kitchen cabinets and walls. This article discusses the optimal

distance and how close they should be ...

[Get Price](#)



Battery Cabinets vs. Battery Racks

Because air exchanges in most computer rooms far exceed the ventilation of a normal work environment, placement of battery cabinets in a computer room is rarely a problem.

[Get Price](#)

How to Calculate Heat Loads and Server Room ...

An article on how to calculate the heat loads and cooling requirements for datacenters, computer, server rooms and IT closet air ...

[Get Price](#)



Do Lithium Ion Batteries Require A Battery Room? Storage ...

Lithium-ion batteries need a battery room if their capacity exceeds 20 kWh, according to fire codes. NFPA 855 outlines ventilation and safety

requirements.

[Get Price](#)



Safe Clearances for Electrical Equipment: Working ...

The aisle (s) between pieces of such equipment, with live parts on both sides of the aisle, must be at least 4 feet wide. If the voltage exceeds ...

[Get Price](#)



Safe Clearances for Electrical Equipment: Working Space and ...

The aisle (s) between pieces of such equipment, with live parts on both sides of the aisle, must be at least 4 feet wide. If the voltage exceeds 600, clearance must be increased even further.

[Get Price](#)

Space Planning: Kitchen Cabinet Spacing For A ...

Space between upper and lower cabinets: 18 inches is recommended
When it comes to the space between upper and lower kitchen ...

[Get Price](#)

Safety Requirements for Batteries and Battery Rooms

Safety Safety Requirements for Batteries and Battery Rooms Do you know how to prevent hazards, such as getting burned by acid, when in a battery room?

[Get Price](#)

Practical considerations when designing a battery ...

Where possible, it is usual to place a standard wall cabinet outside the battery room next to the door, so in the case of an emergency, the voltage ...

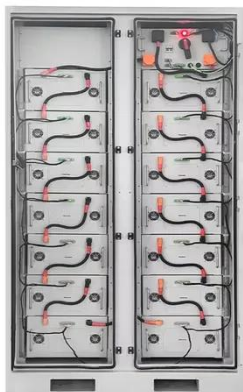
[Get Price](#)

Habitable Rooms and Restricted Locations for Battery ...

When installing the battery on a wall shared with a habitable room that is made of combustible material (e.g. wood), a non-combustible barrier ...

[Get Price](#)

To Strive forward No Energy Waste



- ✓ All in one
- ✓ 100~215kWh High-capacity
- ✓ Intelligent Integration

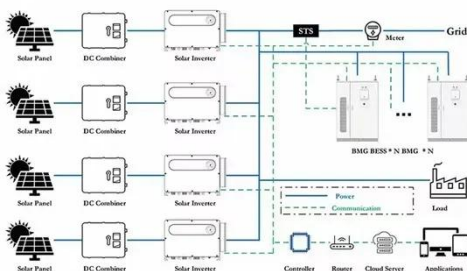
Server Rack Spacing: Best Practices , Sysracks

Another factor influencing the distance between cabinets is the ease of maintenance. System administrators should have enough space to move freely and maintain ...

[Get Price](#)

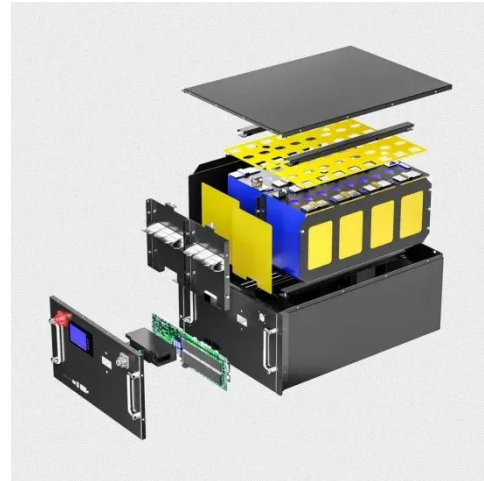

What Is The Optimum Distance For ...

Learn about the ideal distance between kitchen cabinets and windows to ensure proper functionality and aesthetics in your ...

[Get Price](#)


How to Determine the Perfect Desk Clearance ...

Additionally, consider the width of the chair and the space it occupies when determining the distance between the desk and other furniture ...

[Get Price](#)

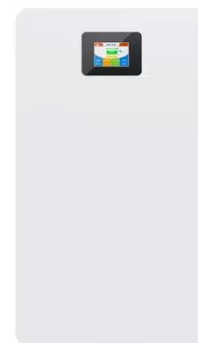
Habitable Rooms and Restricted Locations for Battery Installation

When installing the battery on a wall shared with a habitable room that is made of combustible material (e.g. wood), a non-combustible barrier must be placed between the ...

[Get Price](#)

EG4 BESS Spacing

The following document clarifies BESS (Battery Energy Storage System) spacing requirements for the EG4 WallMount batteries / rack mount six slot battery cabinet installations.

[Get Price](#)

Spaces About Battery Systems , UpCodes

For battery racks, a minimum clearance of 25 mm (1 inch) is required between cell containers and adjacent walls on non-access sides. Battery stands may touch

walls, but the shelf must ...

[Get Price](#)



Safety Clearance Recommendations for Electrical Panel

One Entrance at each end of the equipment. Get access to premium HV/MV/LV technical articles, electrical engineering guides, research studies and much more! It helps you ...

[Get Price](#)



Contact Us

For catalog requests, pricing, or partnerships, please visit:
<https://www.barkingbubbles.co.za>