

SolarInvert Energy Solutions

The inverter voltage is low after discharge



Overview

If the battery voltage is too low, the inverter may not turn on. Use a multimeter to measure the voltage. If it's below the required level, recharge the battery or replace it if it's defective. Inspect the Connections: Loose or corroded connections can prevent the inverter from turning on. Why is my inverter low voltage?

Another possible cause could be an inadequate power source or improper electrical connections. Faulty wiring can also result in voltage fluctuations. If you are experiencing inverter low voltage problems, it's essential to diagnose the issue accurately. Start by checking the battery health.

What is inverter low voltage?

Now that we know what inverter low voltage is, let's explore some common causes behind it. One prevalent cause could be a faulty battery. An old or damaged battery may not be able to provide sufficient power, leading to low voltage from the inverter. Another possible cause could be an inadequate power source or improper electrical connections.

How do I know if my inverter is low voltage?

If you are experiencing inverter low voltage problems, it's essential to diagnose the issue accurately. Start by checking the battery health. Measure its voltage output using a multimeter to ensure it is within the recommended range. If the reading is below the recommended level, it's time to replace the battery.

Why is my inverter displaying a low or no battery warning?

An inverter displaying a low or no battery warning usually means that the energy storage system is unable to provide enough energy to the load. The problem may be related to the condition of the battery itself, a faulty charging system, or abnormal environmental conditions. Aging or declining battery capacity.

Why is my inverter battery not working?

Batteries are dead or undercharged. The connection between the inverter and the battery is critical. Corroded terminals or loose connections can affect its power supply. If the connections look normal, the battery voltage may be too low.

Does a hybrid inverter/charger have low voltage protection?

Both our standard inverter and hybrid inverter/chargers have low voltage protections. In a hybrid inverter, you may get warning about "battery low voltage" or "battery over-discharge", and in a standard system your charge controller and inverter may show a fault or shut off due to low battery voltage.

The inverter voltage is low after discharge

CHARGE/DISCHARGE SETTINGS



One of the problems with Solis 'LV' inverters is that they take low voltage batteries ('LV') which requires a very high current to meet the power demands of larger inverters for ...

[Get Price](#)

DC Link Capacitor Active Discharge by IGBT Weak Short Circuit

DC link active discharge is mandatory in new energy vehicles. This paper first analyzes the necessity of active discharge in automotive inverters and then introduces the ...



[Get Price](#)



Chapter 2 Homework 2 Flashcards , Quizlet

Chapter 2 Homework 2 Which of these is true about inverter service safety? a. The inverter can be serviced without isolating the high voltage. b. The inverter capacitors do not discharge. c. ...

[Get Price](#)

Will My Inverter Restart After a Low Battery Shutdown?

Whether your inverter automatically restarts after shutting down due to low battery voltage and subsequently recharges the battery with solar power depends on ...

[Get Price](#)



Recovering after battery discharge , DIY Solar Power Forum

When the battery voltage falls low, the diode between the switching power supply and the battery conducts, preventing the battery voltage from falling any further.

[Get Price](#)

How to Keep Inverter from Draining Battery

Learn how to optimize inverter settings to prevent battery drain. Adjust voltage settings and use power saving modes for better performance.

[Get Price](#)



7 Reasons Your Inverter Shuts Down (Avoid These Issues!)

4. Loose Cables Loose cables and connections between your inverter and battery can cause it to shut down. This is because voltage can drop when you

have loose wires as the electricity can ...

[Get Price](#)

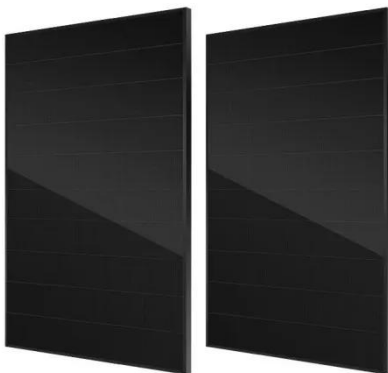
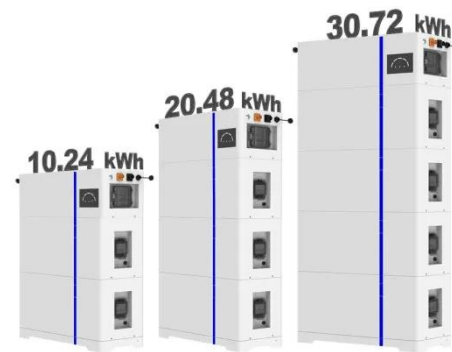


Will My Inverter Restart After a Low Battery Shutdown?

Whether your inverter automatically restarts after shutting down due to low battery voltage and subsequently recharges the battery with solar power depends on the specific features and ...

[Get Price](#)

ESS



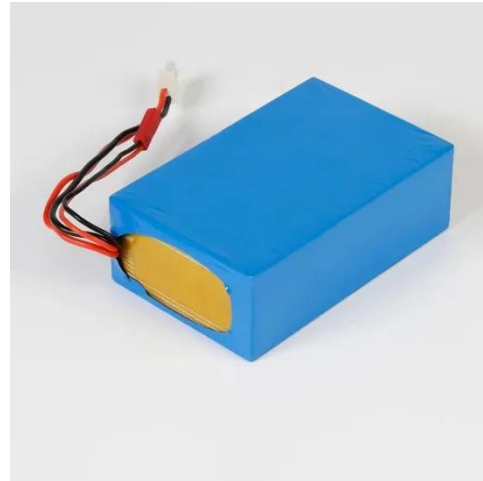
5 Reasons Your Inverter Keeps Shutting Off

This can occur if the voltage level is too high and the inverter cable is not thick enough to handle the incoming power. Other possible reasons are incorrect parameters, lack of power and ...

[Get Price](#)

How to Know If Inverter Battery Fully Charged?

For example, when an inverter battery is charging, the voltage range is 14.4-14.6 volts. When charging is almost complete, the voltage drops ...

[Get Price](#)

Why Does Power Inverter Output Power Not Reach Rated Power

Wondering why your inverter isn't delivering full power? Learn the top reasons why power inverters fall short of rated output and how to fix them. Expert tips included!

[Get Price](#)

Why is my inverter shutting off due to "battery low voltage"?

In a hybrid inverter, you may get warning about "battery low voltage" or "battery over-discharge", and in a standard system your charge controller and inverter may show a ...

[Get Price](#)

6. Troubleshooting Guide

If the battery voltage is getting low and a large load is applied to the AC output the inverter is unable to maintain the proper output voltage. Re-charge the battery ...

[Get Price](#)

Reconnect Voltage

Victron BatteryProtect devices are not designed or rated to connect/disconnect inverters. The large surge currents typical with inverters may damage your BatteryProtect. ...

[Get Price](#)

Power Inverter Problems: 5 Most Frequent Issues and ...

Over 60% of inverter failures stem from preventable problems such as loose connections, overloaded circuits, or poor maintenance. This ...

[Get Price](#)

Do Inverters Turn Off When Voltage is too low?

Group, If my batteries drop too low and the grid is off will an inverter turn off (stop outputting AC current)? I want to verify it will shut off and not provide

dangerously low voltage ...

[Get Price](#)



How to Fix Inverter Battery

Signs include the inverter failing to provide backup power, low voltage readings, or the battery losing charge quickly after charging. In some cases, you may notice physical ...

[Get Price](#)

Gel battery voltage plummets out of nowhere

On a 2kw Axpert I have two gel batteries in series, 120a each. With a puny load of 100w after an hour or so the voltage plummets out of nowhere from 24.6v to 22.4v and the low ...

[Get Price](#)



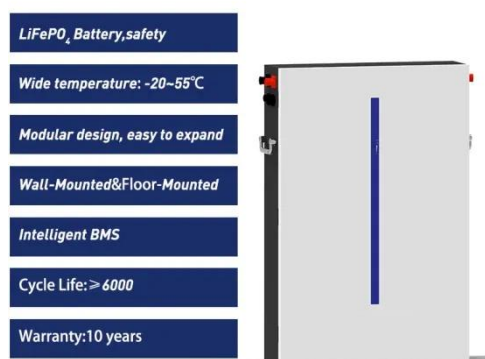
9 Common UPS Faults and Troubleshooting Tips for ...

Discover 9 common UPS faults, including battery and inverter issues. Learn expert troubleshooting steps to resolve power problems and keep your UPS ...


[Get Price](#)

Inverter Restart after Low battery shutdown

Inverter Restart after Low battery shutdown Hi, i had a Multiplus 48/5000 with very recent firmware shut down i.e. stop inverting (according to inverter panel on low battery volts. ...


[Get Price](#)


How to reset srne inverter:Step by step guide

If the battery voltage is too low, it may need to be recharged or replaced. If the battery voltage is normal but the inverter has no output, the ...

[Get Price](#)

Do Inverters Turn Off When Voltage is too low?

Most inverters have a low voltage cut off, i.e., if batteries drop below X, inverter shuts down. Most inverters will not operate if they can't provide rated

current, voltage and ...

[Get Price](#)



auto restart after "battery voltage is too low" warning

If my battery runs out and results in a fault "battery voltage is too low", my expectation would be that after the sun comes and starts charging again via solar, the inverter ...

[Get Price](#)

Troubleshooting Inverter Problems: A Step-by-Step Guide

Check the Battery: Ensure that the battery is fully charged. If the battery voltage is too low, the inverter may not turn on. Use a multimeter to measure the voltage. If it's below the ...

[Get Price](#)



Voltage Troubles? A Guide to Diagnosing Inverter Low Voltage ...

Many people face issues with inverter low voltage at some point in their lives. In this blog post, we will guide you on how to diagnose and potentially fix these

problems.

[Get Price](#)



Power Inverter Problems: 5 Most Frequent Issues and How to Solve

Over 60% of inverter failures stem from preventable problems such as loose connections, overloaded circuits, or poor maintenance. This guide takes an in-depth look at ...

[Get Price](#)



Contact Us

For catalog requests, pricing, or partnerships, please visit:
<https://www.barkingbubbles.co.za>