

SolarInvert Energy Solutions

Turn off the power of the base station



Overview

Do I need to unplug the base stations?

You don't need to unplug them, just use the steamvr base station settings to let steamvr turn off the base stations. It will also turn them on when launching steamvr. So I watched a YouTube video of a guy who's owned 3 Valve Indexes, 4 Base Stations, and 6 controllers.

How do I turn off a base station when SteamVR is closing?

You can enable the setting in steamvr where the base stations are turning off when steamvr is closing and turning on when steamvr is starting. There is no need for smart switches, when the base stations have the functionality. Btw on Android you also can use the App "Light House PM" to turn on and off your base stations.

Why do base stations turn off every night?

This is due to the ramp up and down of the motors being turned off and on putting wear on the device. BUT. for ever 1 person whos base stations have been on for 2 years straight and been perfectly fine, there is also 1 person who has them hooked up to a smart switch and turns them physically off every night.

Turn off the power of the base station



Turn off Valve Index Base Stations

My issue is I have 3 base stations and a large 2-room setup for my PC vs living room, so I can't see all three base stations at the same time. When I turn it off, if it can't see ...

[Get Price](#)

?Base Station and System Settings , SimpliSafe ...

You can access System Settings via your Keypad's menu, SimpliSafe® Mobile App, or SimpliSafe® Online Account. These settings control your system's ...

[Get Price](#)



HTC Vive, How to turn off? :: Help and Tips

I have a power outlet with remote controll to the base's, so I can turn on and off the power that way. But can the Base's take any damages, when the power is turn on or off that way?

[Get Price](#)

?How to shut off Base station? , Ring Community

You can also unplug the Base Station and it will default into Backup Battery mode. Once the battery dies (about 24 hours), the Base Station will not function until it has been ...

[Get Price](#)

Commercial and Industrial ESS

Air Cooling / Liquid Cooling

- Budget Friendly Solution
- Renewable Energy Integration
- Modular Design for Flexible Expansion



How to Power Off Basestations remotely [SOLVED]

To spare you the scroll marathon in this thread, here the list of the currently known solutions to power off your basestations remotely:

[Get Price](#)

Do base stations switch off automatically?

Seems like a simple question. If I switch off my computer and the vive headset but forget to switch off the base stations - what happens? Do the ...

[Get Price](#)



My A50 + Base Station is not charging or will not turn off.

If using a PC or computer, make sure the Base Station is in PC Mode. Power button should be illuminating White. Check to make the switch on the side of the Base

Utility-Scale ESS solutions



Station is switched to "PC".

[Get Price](#)

Base stations not auto turning off

I have the setting for the base stations to turn off automatically after one minute but they arnt turning off. Anyone got a fix?

[Get Price](#)



**200kWh
Battery Cluster**

How to turn off the security system base station , Ring Community

It seems weird that there is no way to turn off the base station. The 24 hour power back up is a useful feature, but that you should have added a power button too which helps to ...

[Get Price](#)

How to reset the SimpliSafe Base Station

You might need to reset your SimpliSafe Base Station if you're running into connection errors. Thankfully, the process is easy. Here's what ...

[Get Price](#)

Should I leave my Base Station on or turn them off?

You don't need to unplug them, just use the steamvr base station settings to let steamvr turn off the base stations. It will also turn them on when launching ...

[Get Price](#)

How to Power Off Basestations remotely [SOLVED]

EDIT (18/04/2020) To spare you the scroll marathon in this thread, here the list of the currently known solutions to power off your basestations remotely: LH v1: GitHub - ...

[Get Price](#)

Should I turn off the base stations when not in use?

It's a machine with moving parts, so yes, you definitely want to power them down when not in use. As for how, you are correct that you just have to unplug

them.

[Get Price](#)



Leaving index plugged in? :: SteamVR General Discussions

I understand the fact that you plug the power cord of the base stations on the power bar but how does the headset turns off ? Headset require 1 power input like the base stations.

[Get Price](#)

1mwh (500kw/1mw)

AIR COOLING
ENERGY STORAGE CONTAINER



Quick PSA for people who want to remotely turn off their base station

You need to set the sleep mode option in base station settings in steam vr, the default one is that they are always active, hence why the light is green when you quit steamvr.

[Get Price](#)

Turn off base station? :: HTC Vive General Discussions

Just got vr about 5 hours ago. Is there a power button on the base station to turn it off? I've got it in my room and I can't sleep with the lights. Thanks

[Get Price](#)

Base Station Light Won't Turn Off , SimpliSafe Support Home

The Base Station will display different LED light colors to give you important information about your system at a glance. If you do not want your Base Station's light on, you can turn it off ...

[Get Price](#)

?Base station light not turning off despite app set to off

The Wall Power Light is a light on the back of the Base Station that remains lit while the Base Station is receiving power from the power adapter. You can check this on the ...

[Get Price](#)

Yealink W76P Cordless Dect Base + Handset

AC Power (Optional) Connect the DC plug on the power adapter to the DC5V port on the base station and connect the other end of the power adapter into an

electrical outlet. Connect the ...

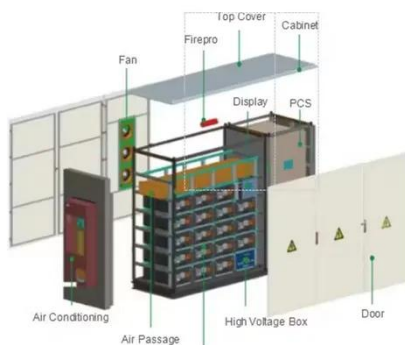
[Get Price](#)



Astro A50 Won't Turn Off [5 Simple Ways to Fix]

Here is how you can fix it. Resync it by placing it on the powered base station and waiting for 3 to 5 seconds or until the bolt and battery level stop blinking. And after that try to turn it off by ...

[Get Price](#)



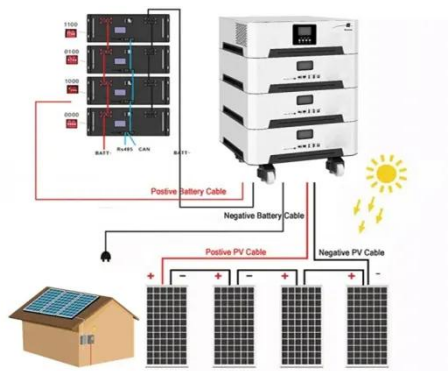
Should I leave my Base Station on or turn them off? More in first

You don't need to unplug them, just use the steamvr base station settings to let steamvr turn off the base stations. It will also turn them on when launching steamvr.

[Get Price](#)

How To Turn Off HTC Vive Stations

Learn how to easily disable HTC Vive base stations and conserve power when not in use. Follow these simple steps to turn off your stations and extend their lifespan.

[Get Price](#)


should i use any power management settings for base station ...

SteamVR's Base Station Power Management feature is turned OFF by default. Turning this feature ON ensures that your Base Stations power off when not in use to reduce power usage ...

[Get Price](#)

should i use any power management settings for base station ...

SteamVR's Base Station Power Management feature is turned OFF by default. Turning this feature ON ensures that your Base Stations power off when not in use to reduce ...

[Get Price](#)


is it ok to turn off extreme base station...

One school holds that powering an electronic device on and off constantly places far more stress on the device than simply leaving it on all the time.



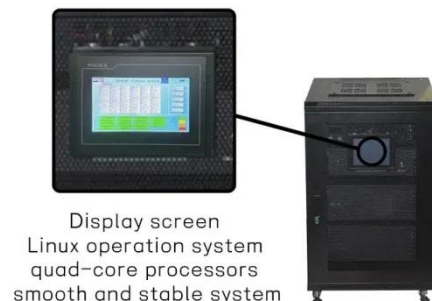
These folks believe that an ...

[Get Price](#)

Is it bad to power off the base stations? : r/ValveIndex

Is it bad to power off the base stations? So I've been scratching my head about why my base stations are always on when I look at them. A little bit about my setup first, my rig is in the ...

[Get Price](#)



Contact Us

For catalog requests, pricing, or partnerships, please visit:
<https://www.barkingbubbles.co.za>