

## SolarInvert Energy Solutions

# Wattage of solar cells per square meter



## Overview

---

What is solar panel watts per square meter (W/M)?

Solar panel watts per square meter (W/m) measures the power output of a solar panel based on its size. Compare solar panels to see which generates most electricity per square meter. A higher W/m value means a solar panel produces more power from a given area. This can help you determine how many solar panels you need for your energy needs.

How do you calculate solar panel output in watts per square meter?

The formula to calculate the solar panel output and how much energy solar panels produce (in watts) using watts per square meter is as follows: Solar Panel Output (W) = Watts per Square Meter (W/m<sup>2</sup>) × Area of Solar Panel (m<sup>2</sup>).

How many watts per square meter is 20 solar panels?

For instance, if the combined size of the 20 panels is 30 square meters, the watts per square meter would be 200 (6,000 watts / 30 square meters). By calculating the watts per meter square, individuals can assess the efficiency of their domestic solar panel systems and compare it with the performance of other systems.

How many Watts Does a solar panel produce per square foot?

Dividing the specified wattage by the square footage of the solar panel will give us just this result: The average solar panel output per area is 17.25 watts per square foot. Let's say that you have 500 square feet of roof available for solar panel installation.

What is watts per square meter?

Watts per square meter is a measurement that quantifies the power output of solar panels relative to their surface area. It indicates how much electricity a solar panel produces per space unit, allowing for comparisons between

different panel types and sizes.

How much energy does a square meter of solar panels generate?

On a clear day with high solar irradiance, a square meter of efficient solar panels can generate around 150-250 watt-hours (Wh) of energy in an hour. It translates to approximately 1.5-2.5 kWh per day. Remember that this is a rough estimate and can vary based on factors such as panel efficiency, geographic location, and weather conditions.

## Wattage of solar cells per square meter

---



### REED R8180 Solar Power Meter

Model: R8180, UPC: 800837006431 This portable solar power meter is used to measure the amount of solar irradiance in watts per square meter ( $W/m^2$ ) or ...

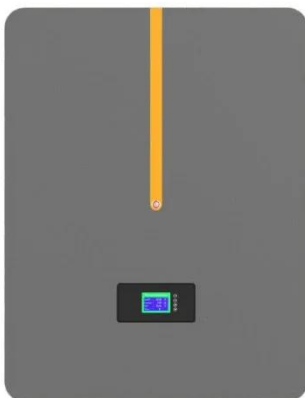
[Get Price](#)

---

### How many watts per square meter are solar cells , NenPower

The solar cell power output typically ranges from 100 to 300 watts per square meter, although it can vary significantly based on several factors including type of solar cell, ...

[Get Price](#)



### Solar Panel Sizes And Wattage , Sizing, Dimensions & Weight

The size or dimensions of the solar panels, measured in height by width, will determine the number of solar panels that will fit on your roof and the wattage of solar panels ...

[Get Price](#)

---

### Solar Energy Per Square Meter: How Much Power ...

Solar energy per square meter refers to the amount of solar radiation impacting a specific area, measured in kilowatts per square meter ...

[Get Price](#)



### Solar Panel Output per Square Meter: Efficiency ...

Solar panels have become a cornerstone of renewable energy, but many wonder: How much power can a single square meter of solar panels actually produce?

...

[Get Price](#)

### Solar Panel Watts Per Square Meter Explained

Learn how to measure solar panel efficiency using solar panel watts per square meter with this comprehensive guide.

[Get Price](#)



### How to Understand Solar Panel Watts Per Square Meter

To determine the watts per square meter, divide the total watts generated by the total surface area covered by the solar panels. For instance, if the

combined size of the 20 ...

[Get Price](#)



## Solar Panel Power Per Square Meter: How to Calculate Efficiency

The efficiency of a solar panel is typically measured under standard test conditions (STC), which include a sunlight intensity of 1000 watts per square meter ( $\text{W/m}^2$ ), a cell ...

[Get Price](#)



## Solar Panel Wattage Calculation: How To Calculate In 2025?

These standardized conditions include 1,000 watts per square meter of solar irradiance, 25°C cell temperature, and air mass of 1.5. The basic solar panel wattage formula is: Wattage = Voltage ...

[Get Price](#)



## Solar Panel Ratings Explained - Wattage, Current, ...

An "Air Mass" of 1.5 A "Solar Irradiance" of 1000 Watts per square meter ( $\text{W/m}^2$ ) And a "Solar Cell Temperature" of 25°C.

Manufacturers ...

[Get Price](#)



### How Much Energy Can Solar Panels Generate?

The estimated output from solar energy systems under peak sunlight reaches between 150 to 220 watts per square meter. Factors Affecting Solar Panel ...

[Get Price](#)

### Solar Panel Power Per Square Meter: How to ...

The efficiency of a solar panel is typically measured under standard test conditions (STC), which include a sunlight intensity of 1000 watts per ...

[Get Price](#)

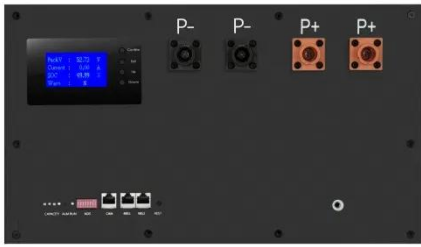


### How many watts does a square meter of solar panel have?

Both roof orientation and shading must also be factors in evaluating whether sufficient productive area exists for solar panel installation. \*\*The exploration of

how many ...

[Get Price](#)



## How many watts of solar energy can be radiated per ...

The ability to harness solar energy effectively relies on a profound understanding of irradiance and its influencing factors. Although estimates

...

[Get Price](#)



## Watts Per Square Meter Solar Panel - The Go-to Guide

In this comprehensive guide, we'll delve into the intricacies of watts per square meter for solar panels, exploring what they are, how they ...

[Get Price](#)



## US Solar Insolation Maps

Since the typical modern solar panel is about 19% - 21% efficient, you will get about 1200 watts per square meter of panel. So, if the map says that you live

...



[Get Price](#)

### How many square meters of space is required per kw ...

The area required for each kilowatt (kW) solar panel system is approximately 5 to 10 square meters, depending on the panel efficiency and ...

[Get Price](#)

### Solar Power per Square Meter Calculator

A solar power per square meter calculator takes details regarding these factors and then gives the accurate output generated by the solar panel per square meter.

[Get Price](#)

### How many watts of solar photovoltaic power ...

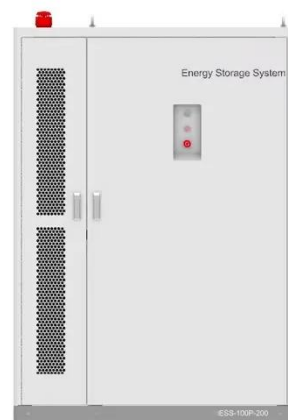
The examination of solar photovoltaic power generation underscores its profound significance in contemporary energy discourse. The ...

[Get Price](#)

---

## Solar Power per Square Meter Calculator

To determine the watts per square meter, divide the total watts generated by the total surface area covered by the solar panels. For instance, ...

[Get Price](#)

---

## Watts Per Square Meter Solar Panel - The Go-to Guide

In this comprehensive guide, we'll delve into the intricacies of watts per square meter for solar panels, exploring what they are, how they work, and why they matter in solar ...

[Get Price](#)

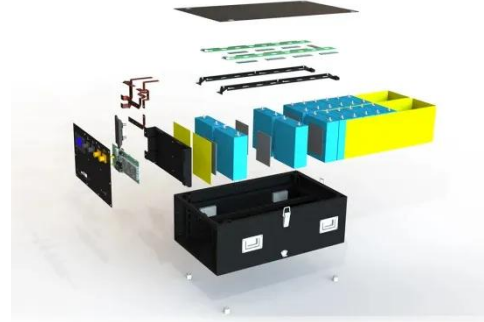
---

## Solar Panel Efficiency: Watts Per Square Meter Explained

Currently, the average efficiency of commercially available solar panels ranges between 15% and 20%. This translates to about 150 to 200 watts per

square meter of solar panel. The Frontier of ...

[Get Price](#)



### Standard Solar Panel Sizes And Wattages (100W-500W ...

Here are a few examples of the dimensions of the most popular solar panel wattages: A typical 100-watt solar panel is 41.8 inches long and 20.9 inches wide. It takes up 6.07 sq ft of area. If ...

[Get Price](#)

### Solar Electricity in Space

The bigger the area of a solar cell, the more electricity they can generate from sunlight. Because the mass of a solar panel increases as its area gets bigger, engineers try to keep the mass of ...

[Get Price](#)



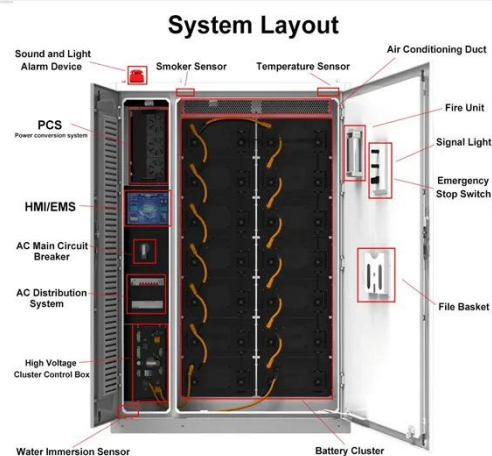
### Solar Panel Output Calculator , Get Maximum Power Output

Use Solar Panel Output Calculator to find out the total output, production, or power generation from your solar panels per day, month, or in year.

[Get Price](#)


## When the Sun Is Shining, How Much Solar Energy ...

The energy conversion rates of solar panels are fundamental in determining the amount of watts per square meter that can be harnessed from ...

[Get Price](#)


## Solar Panel Output per Square Meter: Efficiency Factors & Future ...

Solar panels have become a cornerstone of renewable energy, but many wonder: How much power can a single square meter of solar panels actually produce? Let's break down the ...

[Get Price](#)

## Standard Solar Panel Sizes And Wattages (100W ...

Here are a few examples of the dimensions of the most popular solar panel wattages: A typical 100-watt solar

panel is 41.8 inches long and 20.9 inches

...

[Get Price](#)



---

## Contact Us

For catalog requests, pricing, or partnerships, please visit:  
<https://www.barkingbubbles.co.za>