

SolarInvert Energy Solutions

What Battery Size Should I Use with Two 200W Photovoltaic Panels



Overview

You might be wondering, which type of battery you should go for. Here are some key points that will help to make the decision easy for you.

What size battery you need, will depend on the total power production of your solar panels. And the power output of the solar panels will depend on how many.

You need batteries to store the DC power output from solar panels or later use or in case of an emergency. But, for a 200w solar panel system, I would recommend.

Actually, “a 500Wh [12 Volts, 40Ah] is considered the best match for a 200W solar panel.” It is highly recommended to use lithium batteries for solar panels because of their extended life span, excellent power output, robustness, and reliable performance. What is the best battery for a 200W solar panel?

The best battery for a 200W solar panel would be a 100ah lithium-iron battery. Lithium-ion batteries would be superior in terms of lifespan and performance. When looking at a battery for a 200W solar panel, a few elements need to be understood, and those would be: What level of power generation can a 200W solar panel achieve in a day.

Can a 200W solar panel charge a battery?

There would be roughly six hours of average sunshine to supply your solar panel in a day. Hence, a 200W solar panel may generate about sixty to seventy-two amp-hours a day. Assuming that we use a 12-volt 225Ah battery, a single 200W solar panel is not sufficient to fully charge this battery in a day, particularly when you opt for two batteries.

Can a 200W solar panel use a lithium ion battery?

You can use a single 100ah lithium-ion battery or two 100ah lead-acid batteries wired in parallel with a 200W solar panel. The best battery for a 200W solar panel would be a 100ah lithium-iron battery. Lithium-ion batteries would be superior in terms of lifespan and performance.

What size battery do I need for a solar panel?

What size battery you need, will depend on the total power production of your solar panels. And the power output of the solar panels will depend on how many peak sun hours your location receives. Which I'll explain in a moment. Generally, for a 200 watt solar panel, you need 12v 100Ah lithium or 12v 200Ah lead-acid battery.

What is a solar panel and Battery sizing calculator?

A Solar Panel and Battery Sizing Calculator is an invaluable tool designed to help you determine the optimal size of solar panels and batteries required to meet your energy needs. By inputting specific details about your energy consumption, this calculator provides tailored insights into the solar setup that will best suit your requirements.

Can a solar panel 200 watt 12 volt battery be used?

When using a solar panel 200 watt 12 volt, the perfect match of battery you can use is a 12-volt 40Ah 500-watt-hours battery. That said, when it comes to the number of battery storage for your requirements, you need to determine your power consumption, which is gauged in kWh. Let's talk more about this topic below! 1.

What Battery Size Should I Use with Two 200W Photovoltaic Panels



Solar Battery Calculator: How to Size Your Solar Panels, ...

Consider sunlight availability, panel efficiency, and size to determine the correct number of solar panels. Calculate your daily energy consumption by adding the wattage of all ...

[Get Price](#)

What Size Battery Do You Need for Solar Panels: A Complete ...

Choosing the right battery size involves estimating your daily energy usage and factoring in potential energy production from solar panels. This calculation ensures your ...

[Get Price](#)

50KW modular power converter



Flexible Configuration

- Modular Design, Expanding as Required
- Small & Light, Wall Mounted
- Installed in Parallel for Expansion



Powerful Function

- Support PV+ESS
- Grid Support, Equipped with SVG Technology
- On-Grid and Off-Grid Operation



Reliable Protection

- Outdoor IP65 Design
- Sufficient Protection Functions Equipped



Harnessing the Sun: Unlock the Power of a 200 Watt Solar Panel

The category of 200 watts solar panels is indeed the mid-range option for solar charging. These should be able to produce enough electrical energy for most of the common ...

[Get Price](#)

Standard Solar Panel Sizes And Wattages (100W ...

72-cell solar panel size. The dimensions of 72-cell solar panels are as follows: 77 inches long, and 39 inches wide. That's a 77×39 solar panel; basically, a ...

[Get Price](#)



How many batteries can be charged by a 200w solar panel

To ascertain how many batteries can be charged, one must consider the batteries' capacities, typically measured in amp-hours (Ah). A 12V battery system is commonly used in ...

[Get Price](#)

what size fuse between 200w solarflex panel and MMPPT 75/15 ...

what size fuse between 200w solarflex panel and MMPPT 75/15 smartsolar charge controller I have an Ampere Time 12v 200Ah battery Renogy 2000w inverter all for my tow trailer One of ...

[Get Price](#)



100w vs 200w Solar Panel: Differences And More

The experts at BougeRV will walk you through how the differences between the most common 100W and 200W solar panels and explain what they can run ...

[Get Price](#)

What Size Inverter For a 100W Solar Panel?

A 12V 100W solar panel needs a 12V 200W inverter to run AC powered appliances, and at least a 100ah battery to store energy. A 12V 5A PWM or MPPT charge controller is required to keep ...

[Get Price](#)

Solar Panel and Battery Sizing Calculator

A Solar Panel and Battery Sizing Calculator is an invaluable tool designed to help you determine the optimal size of solar panels and batteries ...

[Get Price](#)

How Many Batteries Do I Need for a 200 Watt Solar Panel?

Actually, "a 500Wh [12 Volts, 40Ah] is considered the best match for a 200W solar panel." It is highly recommended to use lithium batteries for solar panels

because of their ...

[Get Price](#)



ESS



Solar Battery Size Calculator: What size battery do I ...

What size solar panel array do you need for your home? And if you're considering battery storage, what solar battery size would be most ...

[Get Price](#)

How Many Batteries Do I Need for a 200 Watt Solar Panel?

Assuming that we use a 12-volt 225Ah battery, a single 200W solar panel is not sufficient to fully charge this battery in a day, particularly when you opt for two batteries. Keep ...

[Get Price](#)



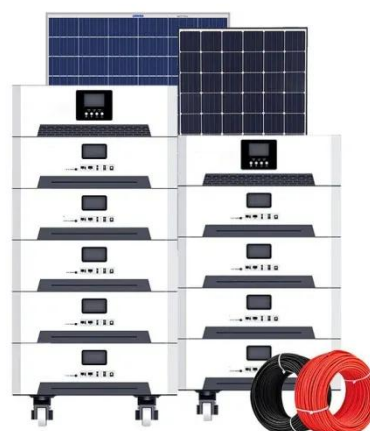
100W Vs 200W Solar Panel (Efficiency Report)

The bulk of solar panels on the market are either 100 watts or 200 watts, and while the more significant wattage is usually preferable, as we'll ...


[Get Price](#)

What Size Inverter to Run a 200W Solar Panel?

An inverter can run a 200w solar panel if it is the right size. Use the proper method to size an inverter for solar panels and avoid issues.

[Get Price](#)


Can I Use Two Solar Charge Controllers?

Is it a good idea to use two charge controllers? In certain situations yes, but the solar panel and battery sizes have to be right.

[Get Price](#)

Solar Battery Size Guide: kWh, Inverter & Runtime

2 days ago · FAQ How Do I Match My Battery Size To My Inverter? Is A 5kW Or 10kW Solar Battery Better? Is A 200W Solar Panel Enough For A 100Ah Battery?

Learn More About ...

[Get Price](#)



Battery For 200W Solar Panel (What You Need)

We know that a 12V 100ah battery would be optimal for the 200W solar panel, but depending on what you are prepared to spend will dictate the type of battery you buy. The ...

[Get Price](#)

Solar Battery Size Calculator: What size battery do I need?

What size solar panel array do you need for your home? And if you're considering battery storage, what solar battery size would be most appropriate? This article includes tables ...



[Get Price](#)

How Many Batteries Do I Need for a 200 Watt Solar ...

Assuming that we use a 12-volt 225Ah battery, a single 200W solar panel is not sufficient to fully charge this battery in a day, particularly when you ...

[Get Price](#)


Solar Panel and Battery Sizing Calculator

A Solar Panel and Battery Sizing Calculator is an invaluable tool designed to help you determine the optimal size of solar panels and batteries required to meet your energy needs.


[Get Price](#)

18650 3.7V
RECHARGEABLE BATTERY
2000mAh



How many batteries can be charged by a 200w solar ...

To ascertain how many batteries can be charged, one must consider the batteries' capacities, typically measured in amp-hours (Ah). A ...

[Get Price](#)

What Size Battery for 200W Solar Panel? (Explained!)

What size battery for 200w solar panel? In this post i shared 3 simple steps to calculate the accurate battery for your 200 watt solar panel.

[Get Price](#)


What Size MPPT Controller Do I Need? ? Clever ...

If you have a solar power system, you know that choosing the right components is essential to maximizing its efficiency and longevity. One of the ...

[Get Price](#)

How Many Batteries Do I Need for a 200 Watt Solar ...

Actually, "a 500Wh [12 Volts, 40Ah] is considered the best match for a 200W solar panel." It is highly recommended to use lithium batteries for ...

[Get Price](#)


Which is better single 200w panel or 2x 100w panels?

I am planning on going with 4 100W panels instead of 2 200W panels on my travel trailer, because I think they handle shade better than 2 ...

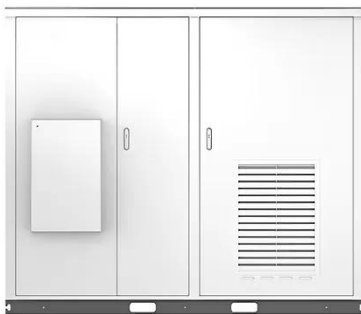
[Get Price](#)

Solar Panel Wire Size (Cable Gauge + Calculations ...

The sizing of the cables for solar systems is critical to the performance and safety of the system. Most household fires result from ...

[Get Price](#)

Solar



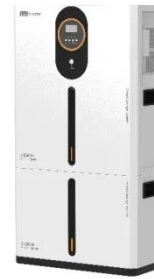
Solar Panel Output Calculator

How to use the Solar panel Output calculator? Total solar panel size: Enter the total size of your solar panel system (eg. 4 200w solar panels $4 \times 200 = 800$ w solar system) Peak ...

[Get Price](#)

Solar Panel Fuse Options: Protecting Your System ...

Discover how to choose the right fuse for your solar system to ensure circuit safety and efficiency. Learn tips for choosing different types of ...

[Get Price](#)

Contact Us

For catalog requests, pricing, or partnerships, please visit:
<https://www.barkingbubbles.co.za>