

SolarInvert Energy Solutions

What are the dimensions of the double-glass modules



Overview

What is a dual-glass module?

Dual-glass type modules (also called double glass or glass-glass) are made up of two glass surfaces, on the front and on the rear with a thickness of 2.0 mm each. Some manufacturers, in order to reduce the weight of the modules, have opted for a thickness of 1.6 mm. DualSun has chosen to stay with a thickness of 2.0 mm for reasons explained below.

What is a double glass module?

The double glass module design offers not only much higher reliability and longer durability but also significant Balance of System cost savings by eliminating the aluminum frame of conventional modules and frame-grounding requirements. The application of double-glass modules covers multiple markets including utility, residential and commercial.

What is the thickness of a glass module?

The thickness of the front glass generally used for this type of structure is 3.2 mm. Dual-glass type modules (also called double glass or glass-glass) are made up of two glass surfaces, on the front and on the rear with a thickness of 2.0 mm each.

Are double glass modules better than traditional modules?

Compared to traditional modules with backsheet, modules with double glass are stronger and more durable, presenting less degradation due to thermal cycling stress. Results from the thermal cycling test up to 400 cycles show about 35% to 43% less degradation with double-glass modules than with traditional modules with backsheet (Fig. 3).

Why are double glass modules symmetrical?

Mechanical constraints on cells: the fact that the structure of the double glass modules is symmetrical implies that the cells are located on a so-called

neutral line, the upper part of the module being in compression during a downward mechanical load and the lower glass surface being in tension.

How much does a glass module weigh?

The weight of glass-glass modules are still an issue, with current designs using 2 mm thick glass on each side for framed modules, the weight is about 22 kg, while 2.5 mm on each side will increase the module's weight to 23 kg. Compared to traditional glass-foil modules, which are about 18 kg, this is a 20% increase in weight.

What are the dimensions of the double-glass modules



Double the strengths, double the benefits

In contrast, double glass modules replace the polymer layer with another glass sheet, creating a robust sandwich structure. At IBC SOLAR, we use 2,0 mm x 2,0 mm glass ...

[Get Price](#)

Transparent backplane and double-glass solar panels: ...

Since glass accounts for a high proportion of the weight of solar panels, as the size of the module increases, the weight difference between double-sided transparent ...

[Get Price](#)



ECO LINE HJT GLASS-GLASS BIFACIAL

The highly efficient heterojunction technology, in combination with the glass-glass architecture, facilitate a new generation of high class solar modules. Due to a ...

[Get Price](#)



Q CELLS Data sheet Q.PEAK DUO XL-G10.d-BFG 475-490 ...

BIFACIAL DOUBLE GLASS MODULE WITH
EXCELLENT RELIABILITY AND
ADDITIONAL YIELD BIFACIAL ENERGY
YIELD GAIN OF UP TO 20 % Bifacial
Q. ANTUM solar cells with ...

[Get Price](#)



Glass-Glass PV Modules

Although there is no standard on glass thickness, in general it is a more complex and expensive process to produce very thin, tempered glass. However, 2.5 ...

[Get Price](#)

Aiko 460Wp Bifacial Glass-Glass N-Type PV panel

The double glass design (2.0 + 2.0 mm of coated semi-tempered glass) ensures superior mechanical resistance and greater protection against adverse environmental conditions. The ...

[Get Price](#)



What are the advantages of dual-glass Dualsun modules?

Dual-glass type modules (also called double glass or glass-glass) are made up of two glass surfaces, on the front and on the rear with a thickness of 2.0 mm



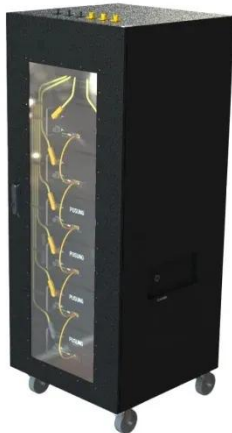
each.

[Get Price](#)

Emerging Double Glass PV Modules Trends and Opportunities

The global double glass PV module market is experiencing robust growth, driven by increasing demand for high-efficiency and durable solar energy solutions. The market's ...

[Get Price](#)



JA Solar JAM72D42-630/LB N-Type Bifacial Double ...

The JA SOLAR JAM72D42-630/LB module is engineered to deliver exceptional performance in diverse environmental conditions. Its bifacial technology allows ...

[Get Price](#)

Specification

Never use a module with broken glass or top substrate. Broken modules should not be repaired and contact with any module surface can lead to electrical shock. Do not disassemble the ...

[Get Price](#)

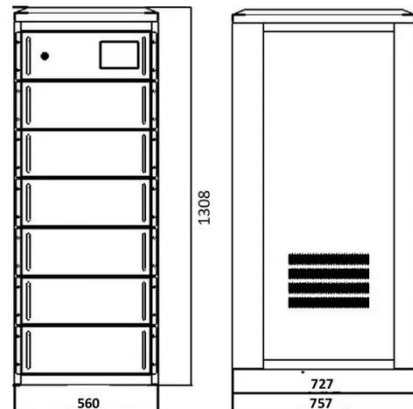

Double the strengths, double the benefits

In contrast, double glass modules replace the polymer layer with another glass sheet, creating a robust sandwich structure. At IBC SOLAR, we ...

[Get Price](#)


Bifacial Solar Modules , Maysun Solar

Traditional monofacial panels use an opaque backsheet, whereas bifacial solar panels incorporate a reflective backsheet or a double-glass layer, enclosing the solar cells between these two ...

[Get Price](#)


Bifacial Solar Modules , Maysun Solar

Traditional monofacial panels use an opaque backsheet, whereas bifacial solar panels incorporate a reflective

backsheet or a double-glass layer, enclosing ...

[Get Price](#)



INSTRUCTIONS FOR PREPARATION OF PAPERS

By choosing heat strengthened glass panels on both sides, we have been able to use a thickness of 2.5mm and to demonstrate an excellent module resistance to all standard mechanical tests ...

[Get Price](#)



210 Double Glass Module Series

210 Double Glass Module Series Dual-glass module is based on 210mm silicon wafer, high power, high efficiency, high compatibility, high quality and low ...

[Get Price](#)

What is the Double Glass Photovoltaic Solar Panel?

Glass-glass module structures (Dual Glass or Double Glass) is a technology that uses a glass layer on the back of the

modules instead of the traditional polymer backsheet. Originally ...

[Get Price](#)



**??????30mmJAM72D00 355-375 BP
??????**

Introduction These double-glass modules assembled with bifacial PERCIUM cells have capability of converting lights incident on their rear side into electricity on top of is being generated by the ...

[Get Price](#)

What are Double Glass Solar Panels?

The modules are available in two versions with power outputs of 525 W and 580 W. The dimensions of the small module are 2,142 mm x 1,160 x 29.6 mm and its weight is 30 kg.

[Get Price](#)



Glass-Glass PV Modules

Although there is no standard on glass thickness, in general it is a more complex and expensive process to produce very thin, tempered glass. However, 2.5 mm glass thickness does

allow for ...

[Get Price](#)



Goodwe Introduces Double-Glass Topcon Bifacial Solar Modules

The modules are available in two versions with power outputs of 525 W and 580 W. The dimensions of the small module are 2,142 mm x 1,160 x 29.6 mm and its weight is 30 kg.

[Get Price](#)



??? 158.9 JAM72D09 370-390 BP

Introduction JA bifacial modules are assembled by high-performance PERCIUM encapsulated by glass-glass panels, are capable of converting energy from lights on front and diffuse light, as ...

[Get Price](#)

What are Double Glass Solar Panels?

Double-glass solar modules are made up of two layers of tempered glass that cover both sides of the solar panel. As snow accumulates on a typical solar

panel or people ...

[Get Price](#)



Double-glass PV modules with silicone encapsulation

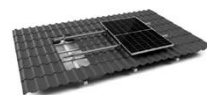
Even more than for conventional modules, the bill of materials is critical for double-glass modules. In particular, the choice of encapsulant has a large impact on the module

[Get Price](#)

D-Matrix Bifacial Double Glass Module

Double glass solar panels have longer average lives and are essentially PID-immune. D-Matrix Bifacial module is one of the examples from Das Solar.

[Get Price](#)



TILE ROOF SOLAR MOUNTING SYATEM



STANDING SEAM ROOF SYATEM



ADJUSTABLE TILT FLAT ROOF SYATEM



TRIANGLE FLAT ROOF SYATEM

Double Glass PV Modules Market Size, Development, SWOT

Double Glass PV Modules Market Insights
Double Glass PV Modules Market size is estimated to be USD 10.5 Billion in 2024 and is expected to reach USD 20.8

Billion by 2033 at a CAGR of ...

[Get Price](#)



Contact Us

For catalog requests, pricing, or partnerships, please visit:
<https://www.barkingbubbles.co.za>