

SolarInvert Energy Solutions

What are the emergency communication equipment base stations



Overview

The base station equipment such as radio transceivers, digital telephone channel banks, and switches of each subsystem are located in a Seismic Category Criteria I structure in separate rooms to avoid losing multiple communication capabilities during an accident or fire. What are emergency communications systems?

tuations, accidents, and natural disasters. 24.3 General. 24.3.1* **Intelligible Voice Messages.** Emergency communications systems shall be capable of the reproduction of prerecorded, synthesized, or live (e.g., microphone, telephone handset, and radio) messages.

What is an emergency communications station (EmComm)?

Putting together a field, or emergency communications, station (EmComm) is similar to setting up a home station. Both types of stations share many common elements: radios that cover all amateur bands, antenna systems appropriate for those bands with some type of supporting structure, and a source of electricity for power.

What is a required emergency communications system?

phone 24.3.3* **Required Emergency Communications Systems.** An emergency communications system shall be installed in occupancies where required by the authority having jurisdiction or by other applicable governing laws, codes, or standards. 24.3.4*.

What is an em comm station?

The author's station in a typical Em-Comm configuration. A computer and sound interface are needed when using digital modes. Amateur radio operators usually refer to their communications equipment as their "station," whether it is a base station at home, mobile station in a vehicle or portable station when on foot.

What is a base station Radio?

A base (or fixed) station radio also contains a transmitter and a receiver. The radio is powered by an external electrical system (typically 110 V ac) and is connected to an antenna located tens to hundreds of feet away, typically on top of a building or on a tower.

What equipment do I need for a field or EMCOM station?

Peripheral equipment, such as antenna tuners (sometimes required to “match” the output of the radio to the impedance of the antenna system), may be necessary in a field or EmComm station but should be kept to a minimum, both in size and number, while still maintaining the station’s capabilities.

What are the emergency communication equipment base stations



Emergency communications systems and NFPA 72-2010

Within NFPA 72, criteria for emergency communications systems design and installation are broken down to address three specific areas: Systems in buildings Wide-area ...

[Get Price](#)

Chapter 5 Communication Questions Flashcards , Quizlet

Which of the following is a "ground rule" for radio operations? a. Use the radio just as if you were talking on a telephone. b. Keep transmissions brief, organized, and to the point. c. Never listen ...

[Get Price](#)



Public Safety Primer

For many years, public safety agencies utilized bands of frequencies, in the VHF and UHF parts of the spectrum. These frequencies are allocated by the Federal Communications Commission ...

[Get Price](#)

911 Dispatch Consoles

Our 911 dispatch consoles meet the demands of emergency communication centers and provide operators with the tools they need for success. Review ...

[Get Price](#)



GMDSS Maritime Communication Types Reference Manual

Global Maritime Distress and Safety System (GMDSS) revolutionized maritime communications by integrating satellite and terrestrial technologies into a comprehensive safety network. This ...

[Get Price](#)

Dispatch 101: The ins and outs of communication ...

Dispatch centers: The first of the first responders A back-to-basics review of communication center types and facility equipment, plus must-have ...

[Get Price](#)



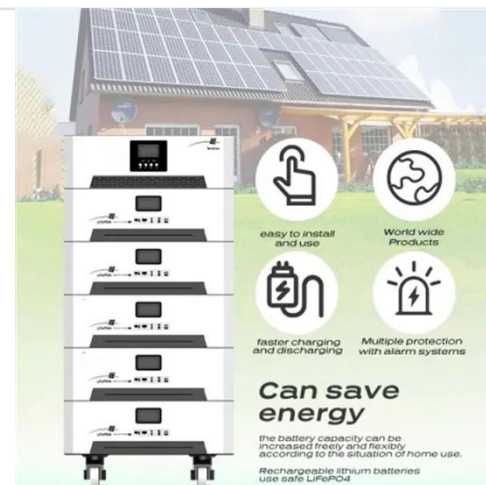
Military Communication

The standalone 4G LTE Manpack Base Station provides a quick and smart network for voice, data, video, and Position Location for Information Services ...

[Get Price](#)


Guide for the Selection of Communication Equipment for ...

The RF communication equipment considered in this guide includes portable radios, mobile radios, base/fixed station radios, repeaters, and base station/repeaters.

[Get Price](#)


Land Mobile Radio (LMR) 101

WHAT ARE LMR SYSTEMS? LMR systems are terrestrially-based, wireless communications systems commonly used by federal, state, local, tribal, and territorial emergency responders, ...

[Get Price](#)

Base Stations

The present-day tele-space is incomplete without the base stations as these constitute an important part of the modern-day scheme of wireless communications. They are ...

[Get Price](#)

Comms on the Go: Emergency Field Communications

24.4.2.1 Automatic Response. The in-building fire emergency voice/alarm communications system shall be used to provide an automatic response to the receipt of a signal indicative of a fire ...

[Get Price](#)

Broadcasters and Wireless Providers

The National Public Warning System (NPWS), also known as Primary Entry Point (PEP) stations, are radio broadcast stations that work with FEMA to provide emergency alert ...

[Get Price](#)

2018 Emergency Communications System Planning Guide ...

OEC supports and promotes communications used by emergency responders and government officials to keep America safe, secure, and resilient.

The office leads the Nation's operable and ...

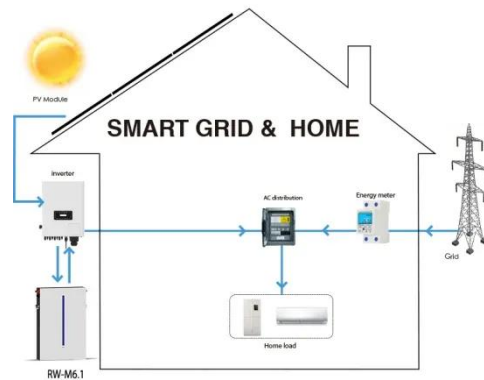
[Get Price](#)



NFPA 72 Chapter 24 Emergency Communications Systems ...

24.4.2.1 Automatic Response. The in-building fire emergency voice/alarm communications system shall be used to provide an automatic response to the receipt of a signal indicative of a fire ...

[Get Price](#)



Base Emergency Communications System

Next Generation 9-1-1 (NG-911) includes Call Handling System (CHS), infrastructure, Geospatial Information System (GIS), and Location Information ...

[Get Price](#)

Base Emergency Communications System

Next Generation 9-1-1 (NG-911) includes Call Handling System (CHS), infrastructure, Geospatial Information System (GIS), and Location Information

Services (LIS). NG-911 CHS enables ...

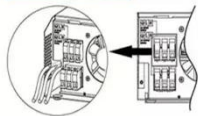
[Get Price](#)



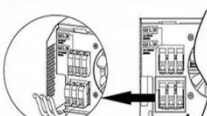
Parallel (Parallel operation up to 6 unit (only with battery connected))



AC input wires



AC output wires



Station Communications Rooms Are Nerve Centers of Firehouses

Several manufacturers have developed specialized communications equipment for fire departments and have designed in multiple options that can make getting a rig off the floor ...

[Get Price](#)

Comms on the Go: Emergency Field Communications

Amateur radio operators usually refer to their communications equipment as their "station," whether it is a base station at home, mobile station in a vehicle or portable station ...

[Get Price](#)



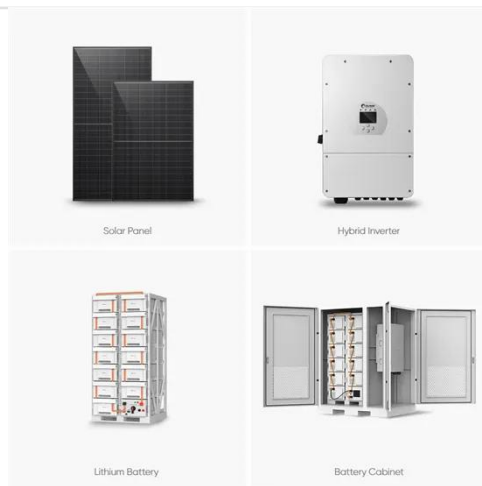
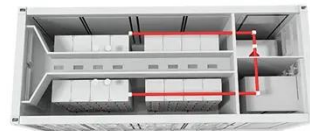
Base Stations and Cell Towers: The Pillars of Mobile ...

Base stations and cell towers are critical components of cellular communication systems, serving as the infrastructure that supports seamless ...

[Get Price](#)


Station Communications Rooms Are Nerve Centers of ...

Several manufacturers have developed specialized communications equipment for fire departments and have designed in multiple ...

[Get Price](#)


9.5.2 Communication System

The base station equipment such as radio transceivers, digital telephone channel banks, and switches of each subsystem are located in a Seismic Category Criteria I structure in separate ...

[Get Price](#)

Fire Service Communications: Chapter 4 Presentation

Learn about fire service communications, including radio systems, emergency call processing, and the role of telecommunicators.

[Get Price](#)

Communications

When commercial communications systems are unavailable or overloaded, the Civil Air Patrol radio nets are ready to keep command and control (C2) channels open, keeping CAP's aircraft ...

[Get Price](#)

A GUIDE TO RADIO COMMUNICATIONS STANDARDS ...

Developing and implementing common technical characteristics and guidelines for radio communication systems for early warning and disaster relief, would promote a common ...

[Get Price](#)

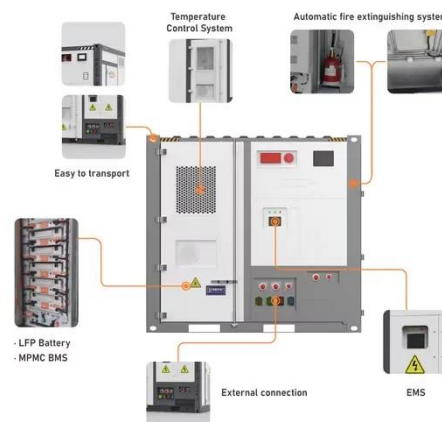
Pedestal PRO Emergency Call Station Platform for ...

Lindon, UT , February 7, 2023: Pedestal PRO, the world's leading manufacturer of access control pedestals, has introduced a turnkey ...

[Get Price](#)


NFPA 72®

The emergency users of the remote call stations would ordinarily not receive instructions on this equipment. If there are people in a building who could ...

[Get Price](#)


Broadcasters and Wireless Providers

11 rows· The National Public Warning System (NPWS), also known as Primary Entry Point (PEP) stations, are radio broadcast stations that ...

[Get Price](#)

Public Safety Primer

For many years, public safety agencies utilized bands of frequencies, in the VHF and UHF parts of the spectrum. These frequencies are allocated by the ...

[Get Price](#)



Base Stations



The present-day tele-space is incomplete without the base stations as these constitute an important part of the modern-day scheme of wireless ...

[Get Price](#)

Contact Us

For catalog requests, pricing, or partnerships, please visit:
<https://www.barkingbubbles.co.za>