

SolarInvert Energy Solutions

What batteries are used for sine wave inverters



Overview

What type of battery works best for inverters?

Deep-cycle batteries work best for your sine wave inverters. Here's why: They can get discharged and recharged multiple times and produce steady power over an extended period. Deep-cycle batteries have low internal resistance. Which battery is best for a sine wave inverter?

Deep-cycle batteries work best for your sine wave inverters. Here's why: They can get discharged and recharged multiple times and produce steady power over an extended period. Deep-cycle batteries have low internal resistance. So, they don't get hot when you charge them up with solar power, unlike other lead-acid batteries.

Can a lithium battery be used with a sine wave inverter?

Some examples include pure sine wave and modified sine wave inverters. These inverters may work better with lithium-ion batteries. Understanding your inverter type is crucial to avoid potential issues down the line. The first step in installing a lithium battery for inverter with an existing inverter is to assess your current setup.

Will a 1000W pure sine wave inverter work with a LiFeP04 battery?

I'm a total newbie at this, but I'm trying to decide on a 1000W pure sine wave inverter to pair with my LiFeP04 battery for my basic solar system for a van. I found a 1000W pure sine wave inverter that has good reviews and looks awesome, but the manufacturer said "this device would not work with Lithium Iron Phosphate batteries (LiFeP04).".

What is a pure sine wave inverter?

A pure sine wave inverter is a type of power inverter that converts DC (direct current) power from batteries or other DC sources into AC power that can be used to power a wide range of electronic devices and appliances, including sensitive equipment such as laptops, refrigerators, air conditioners, and more.

How does a sine wave inverter work?

When using true sine wave inverters, you're powering the sine wave inverter by connecting it to a battery or battery pack. Once the pure sine inverter is turned on, it starts to invert the DC energy to AC regardless if a load is applied or not (I'll talk about this parasitic draw later).

Can a sine wave inverter damage a battery?

Certain rechargers for small nickel-cadmium batteries can be damaged if plugged into a modified sine wave inverter. In particular, two types of appliances are susceptible to damage: Small, battery-operated appliances such as flashlights, cordless razors and toothbrushes that can be plugged directly into an AC receptacle to recharge.

What batteries are used for sine wave inverters



Pure Sine Wave Inverter Selection: Reliable Power When You ...

What Is a Pure Sine Wave Inverter? A pure sine wave inverter is a device that converts direct current (DC) electricity from batteries or solar panels into alternating current (AC) electricity ...

[Get Price](#)

Inverters and charging your eMTB

I use a 400w inverter in my own T5 to charge ebike batteries (both "square wave/modified sine" and "pure sine" inverters work without issue). The inverter you link is a bit ...



[Get Price](#)



Calculate Battery Size For Any Size Inverter (Using Our Calculator)

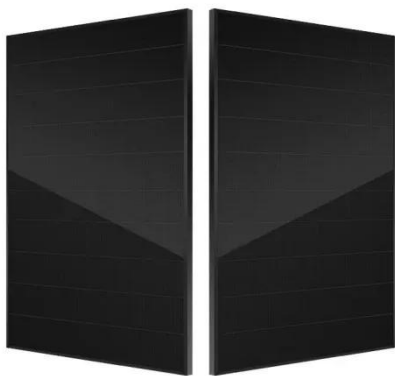
So I have made it easy for you, use the calculator below to calculate the battery size for 200 watt, 300 watt, 500 watt, 1000 watt, 2000 watt, 3000 watt, 5000-watt inverter

[Get Price](#)

How Inverters Work with Batteries: A Beginner's ...

First, identify the battery type. Lead-acid and lithium-ion batteries are common choices. Each type has advantages in terms of cost, lifespan, ...

[Get Price](#)



What is the best battery for sine wave Inverters?

It's not enough to select the right sine wave inverters for your power needs during a power outage. It would be best if you also used the right batteries to store the power you need ...

[Get Price](#)

Do LiFeP04 batteries need a specific kind of inverter?

Do LiFeP04 batteries need a specific kind of inverter? I'm a total newbie at this, but I'm trying to decide on a 1000W pure sine wave inverter to pair with my LiFeP04 battery for my ...

[Get Price](#)



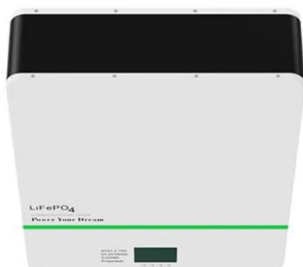
Pure Sine Wave Inverter Selection: Reliable Power ...

What Is a Pure Sine Wave Inverter? A pure sine wave inverter is a device that converts direct current (DC) electricity from batteries or solar panels into ...

[Get Price](#)


Pure Sine Wave Inverter: All You Need to Know

It is typically generated by sources such as batteries, solar panels, or DC power supplies. In DC power, the electric charge flows in a single direction, maintaining a constant ...

[Get Price](#)


? What is a Pure Sine Wave Inverter and Why Does ...

If you're researching inverters for home backup or solar systems, you've probably come across the term "pure sine wave inverter." But what ...

[Get Price](#)

Inverters are they fine to use for charging

YES, if you use a modified sine wave inverter with certain chargers, you will either damage the charger, the battery, or both. It only happens to chargers that

say "Warning!"

[Get Price](#)



Best Inverters for Lithium Ion Battery [2023]

Pure sine wave inverters often cost more than other inverter types, but they provide the maximum level of compatibility and are an excellent ...

[Get Price](#)

Pure Sine Wave Inverter: All You Need to Know

It is typically generated by sources such as batteries, solar panels, or DC power supplies. In DC power, the electric charge flows in a single ...

[Get Price](#)



Best inverter companies in India 2025: Top 10 picks ...

The Luminous Inverter & Battery Combo with Trolley provides reliable power backup for homes, offices, and shops. The Pure Sine Wave inverter with a ...

[Get Price](#)

Renogy Inverter P2 2000W Pure Sine Wave Inverter ...

About this item ?POWERFUL DC-AC?This 2000 watt inverter is perfect for solar systems. The power inverter 12V to 110V provides 2000 watt ...

[Get Price](#)

What Type of Battery Should I Use for My Inverter?

What type of battery works best for inverters? Deep-cycle batteries work best for your sine wave inverters. Here's why: They can get discharged and recharged multiple times ...

[Get Price](#)

Calculate Battery Size For Any Size Inverter (Using Our Calculator)

Do LiFeP04 batteries need a specific kind of inverter? I'm a total newbie at this, but I'm trying to decide on a 1000W pure sine wave inverter to pair with my

LiFeP04 battery for my ...

[Get Price](#)



Choosing the Right Inverter for Battery Backup Systems

When choosing the right inverter for your battery backup system, it's essential we comprehend our power needs. Inverters convert DC power from your batteries ...

[Get Price](#)

LiTime Pure Sine Wave Inverters - LiTime-US

Pure sine wave inverters produce a smooth, wave-like power output, ideal for sensitive electronics and appliances. You can use them for elevisions, ...

[Get Price](#)



Best Power Inverters for Sump Pumps 2024: Battery ...

Don't want to do any plumbing but need extra security against basement flooding? Use these power inverters with chargers for seamless ...


[Get Price](#)

Compatibility of Lithium-Ion Batteries with Existing Inverters

One of the most significant benefits of using a lithium-ion battery for an inverter is the substantial boost in efficiency and performance. Lithium-ion batteries offer a more consistent discharge ...


[Get Price](#)


Understanding the Compatibility of LiFePO4 Batteries ...

LiFePO4 batteries have gained popularity in various applications due to their high energy density, long lifespan, and low maintenance requirements. However, ...

[Get Price](#)

What Size Inverter Can I Run Off a 100Ah Battery? A ...

Inverters provide different types of output waveforms: pure sine wave, modified sine wave, and square wave.

Pure Sine Wave Inverters: Deliver clean, consistent power ideal ...

[Get Price](#)



Top 4 Best Marine Inverters of 2025 o The Adventure Junkies

BEST BUDGET PURE SINE WAVE INVERTER Pure sine wave inverters are more expensive than modified sine wave inverters, but this popular unit brings pure sine wave ...

[Get Price](#)

How Inverters Work with Batteries: A Beginner's Complete Guide ...

First, identify the battery type. Lead-acid and lithium-ion batteries are common choices. Each type has advantages in terms of cost, lifespan, and efficiency. Next, install the ...



[Get Price](#)

How to Determine Battery Sizes when using Pure Sine Wave Inverters

We often get calls asking, "What size battery do I need to power my Pure Sine Wave Inverter?" And, I admit that is a



fair question to the beginner, so we're here to educate ...

[Get Price](#)

Battery Compatibility Guide for Pure Sine Wave Inverters

The right battery ensures stable performance, longer runtime, and system longevity. Let's break down which battery types work best with pure sine wave inverters.

[Get Price](#)

12.8V 100Ah



Frequently Asked Questions About Power Inverters , DonRowe

The inverter draws its power from a 12 Volt battery (preferably deep-cycle), or several batteries wired in parallel. The battery will need to be recharged as the power is drawn out of it by the ...

[Get Price](#)

Compatibility of Lithium-Ion Batteries with Existing ...

One of the most significant benefits of using a lithium-ion battery for an inverter is the substantial boost in efficiency and performance. Lithium-ion

batteries offer ...

[Get Price](#)



How to Determine Battery Sizes when using Pure Sine Wave ...

We often get calls asking, "What size battery do I need to power my Pure Sine Wave Inverter?" And, I admit that is a fair question to the beginner, so we're here to educate ...

[Get Price](#)

Contact Us

For catalog requests, pricing, or partnerships, please visit:
<https://www.barkingbubbles.co.za>