

## SolarInvert Energy Solutions

# What does 540w single crystal photovoltaic panel mean



## Overview

---

To give you an idea, a standard 540 watt solar panel is approximately 88 x 46 inches and tips the scales at around 72 pounds. Most modules with this output rating are monocrystalline and typically have at least 72 cells (144 half-cut cells). How many cells are in a 540 watt solar panel?

To give you an idea, a standard 540 watt solar panel is approximately 88 x 46 inches and tips the scales at around 72 pounds. Most modules with this output rating are monocrystalline and typically have at least 72 cells (144 half-cut cells). Efficiencies vary widely from brand to brand, but most monocrystalline options fall into 18-22% range.

What is a 540w half cut solar panel?

A 540W Half-Cut Solar Panel refers to a photovoltaic panel that has a power output of 540 watts and employs a "half-cut" cell design. In a half-cut design, the solar cells on the panel are divided into two halves, which are then wired in series.

Which 540 watt solar panel is best?

The 540 watt solar panel is one of the best-rated solar panels, with high-quality 'A' grade solar cells and ultra-clear tempered glasses that are not easily broken. It can work effectively even in low light and cloudy conditions. Our 540-watt 24V solar PV module includes an IP 65 back side junction box.

What is the warranty on 540 W solar panels?

Installing 540 W solar panels is simple enough, despite their larger size compared to standard panels. They typically come with a 25-year warranty, though some higher-end brands offer 30-year protection. Use our solar calculator to determine the optimal size for your installation.

What is the wattage rating of a solar panel?

The Wattage rating of a solar panel is the most fundamental rating,

representing the maximum power output of the solar panel under ideal conditions. You'll often see it referred to as "Rated Power", "Maximum Power", or "Pmax", and it's measured in watts or kilowatts peak (kWp).

Is a monocrystalline solar panel a photovoltaic module?

Yes, a monocrystalline solar panel is a photovoltaic module. Photovoltaic (PV) modules are made from semiconducting materials that convert sunlight into electrical energy. Monocrystalline solar panels are a type of photovoltaic module that use a single crystal high purity silicon cell to harness solar power.

## What does 540w single crystal photovoltaic panel mean

---



### Ja High-Power Single Crystal Solar Charging Panel 540W 555W ...

Ja High-Power Single Crystal Solar Charging Panel 540W 555W Solar Photovoltaic Panel, Find Details and Price about Solar Panel Solar Panels Cells from Ja High-Power Single Crystal ...

[Get Price](#)

### How do solar photovoltaic panels work?

SEE INFOGRAPHIC: How do solar photovoltaic panels work? Types of photovoltaic solar panels and their characteristics There are three main types ...



[Get Price](#)



### Monocrystalline solar panels - Uses, Benefits and ...

These panels are made of a single silicon crystal, allowing them to turn sunshine into energy at a greater rate than other kinds of solar panels. ...

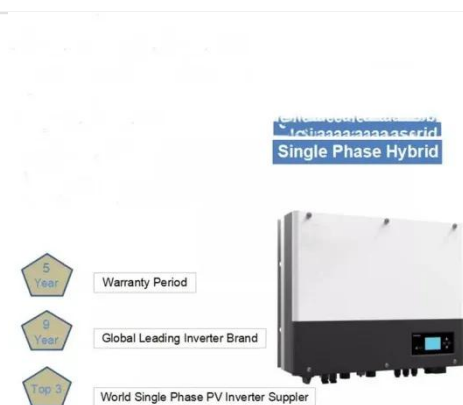
[Get Price](#)

### Solar Panel Single Crystal Photovoltaic Panel 540W 550W

## Solar Panel

Solar Panel Single Crystal Photovoltaic Panel 540W 550W Solar Panel, Find Details and Price about Solar Panel Solar Cell from Solar Panel Single Crystal Photovoltaic Panel 540W 550W ...

[Get Price](#)



### What is the maximum wattage of a single crystal solar ...

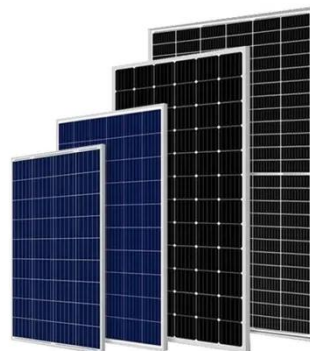
The maximum wattage of a single crystal solar panel primarily depends on advancements in technology and materials. Currently, most ...

[Get Price](#)

## Monocrystalline solar panels - Uses, Benefits and Drawbacks

These panels are made of a single silicon crystal, allowing them to turn sunshine into energy at a greater rate than other kinds of solar panels. This means you can produce ...

[Get Price](#)



### What Is a Monocrystalline Solar Panel? Definition, ...

Monocrystalline solar panels deliver exceptional performance of up to 25% thanks to their construction from a single silicon crystal. The use of ...


[Get Price](#)

## What are photovoltaic cells?

There are lots of parts to a solar panel, but only one of them actually does the job of creating energy you can use in your home--the photovoltaic cells. These cells are the ...

[Get Price](#)


## Trina 450W545W Spark 540W Single Crystal Solar Panel ...

trina 20solar 20panel 20550 20watts.  
solar panel 600watts mono. 450 watts  
solar panel. solar panel 600 watts.  
trinasolar panel

[Get Price](#)

## Single Crystal Photovoltaic Panel High Efficiency 182mm Half Cell 540W

Single Crystal Photovoltaic Panel High  
Efficiency 182mm Half Cell 540W 550W  
555W Solar Panel, Find Details and Price

about Solar Panel Solar Cell from Single Crystal Photovoltaic ...

[Get Price](#)



### **What Is A Solar Panel? How does a solar panel work?**

A solar panel, also known as a PV panel or module, is a device that collects sunlight and converts it into electric current.

[Get Price](#)

### **What Is a Monocrystalline Solar Panel? Definition, Performance**

Monocrystalline solar panels deliver exceptional performance of up to 25% thanks to their construction from a single silicon crystal. The use of pure silicon creates a uniform ...

[Get Price](#)



### **What is the maximum wattage of a single crystal solar photovoltaic panel?**

The maximum wattage of a single crystal solar panel primarily depends on advancements in technology and

materials. Currently, most commercially available ...

[Get Price](#)



## Solar Panel Ratings Explained - Wattage, Current, Voltage, and

The Wattage rating of a solar panel is the most fundamental rating, representing the maximum power output of the solar panel under ideal conditions. You'll often see it ...

[Get Price](#)



## Trina Solar 540W single crystal solar panels fishing ...

Tools & Home Improvement Electrical Electrical Circuitry & Parts Trina Solar 540W single crystal solar panels fishing boat household 24V photovoltaic ...

[Get Price](#)

## 540W Solar Panel Mono PERC Half Cell China Manufacturer

We invite you to contact us for the most current and accurate 540wp solar panel price. Where Can These Perc Mono 540wp Solar Panels Be Suitable for?



They are Perc Half cell Mono-540wp ...

[Get Price](#)



### **Solar Panel Sizes and Wattage Explained**

Ultimately, for calculating the right solar panel dimension and wattage you must consider the average daily energy consumption and ...

[Get Price](#)

### **Solar Panel Sizes and Wattage Explained**

Ultimately, for calculating the right solar panel dimension and wattage you must consider the average daily energy consumption and sunlight exposure. Moreover, it's crucial to ...

[Get Price](#)



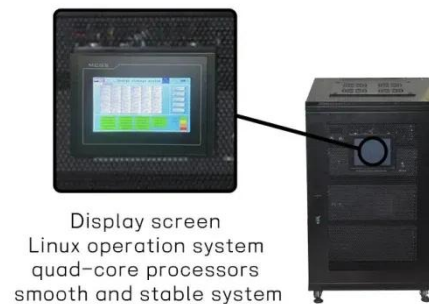
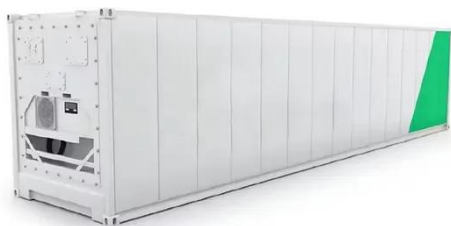
### **Jinko High Quality Single Crystal Photovoltaic Power ...**

Jinko High Quality Single Crystal Photovoltaic Power Generation Solar Panel 540W, Find Details and Price about Jinko Solar Panels Solar System from ...

[Get Price](#)


## Are 540w/640w solar panels worth getting right now? : ...

Discussion of solar photovoltaic systems, modules, the solar energy business, solar power production, utility-scale, commercial rooftop, residential, off-grid ...


[Get Price](#)


## Trina Solar 540W single crystal solar panels fishing ...

Trina 425W single crystal 1762\*1134\*30MM Trina solar energy 540W MPPT special. Trina 540W single crystal (shop explosion) 2278?1??2?

[Get Price](#)

## Monocrystalline Solar Panels: How They Work, Pros ...

Monocrystalline solar panels utilize monocrystalline silicon cells to transform sunlight into usable electrical energy. These cells are made from ...

[Get Price](#)


## Understanding Monocrystalline Solar Panels

Monocrystalline solar panels are a type of solar panel that has gained popularity in recent years due to their high efficiency and durability. They are made from a single crystal of ...

[Get Price](#)

## Bluebird 540 Watt Half Cut Solar Panels

A 540W Half-Cut Solar Panel refers to a photovoltaic panel that has a power output of 540 watts and employs a "half-cut" cell design. In a half-cut design, the solar cells on the panel are ...

[Get Price](#)


## 540 Watt Solar Panels

To give you an idea, a standard 540 watt solar panel is approximately 88 x 46 inches and tips the scales at around 72 pounds. Most modules with this output rating are ...

[Get Price](#)

---

## Contact Us

For catalog requests, pricing, or partnerships, please visit:  
<https://www.barkingbubbles.co.za>